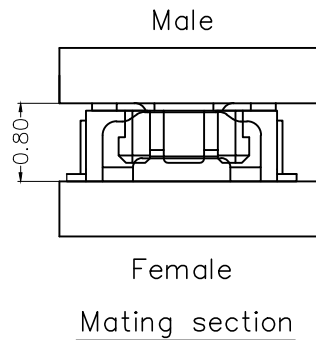
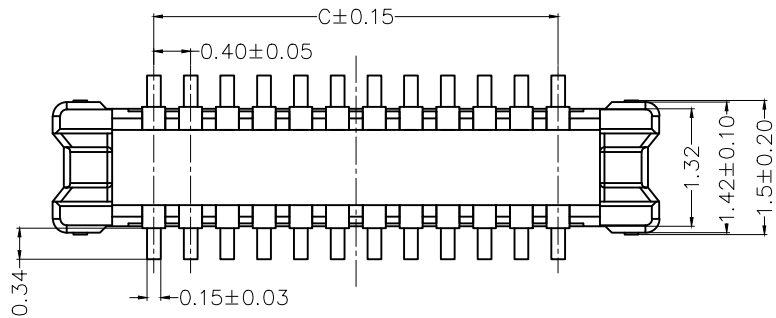
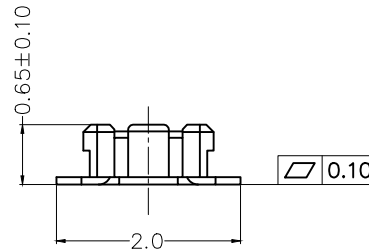
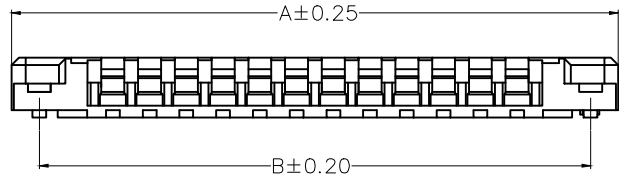


REV	LOCATIONS	DESCRIPTION	DATE	REVISER	APPD
1	▲	Change packaging quantity	17/Mar/25	NICK	LEO



SPECIFICATIONS

Electrical
 Current Rating: 0.3A AC(rms)/DC
 Voltage Rating: 30V AC(rms)/DC
 Contact Resistance: 100 mΩ Max
 Insulation Resistance: 50 MΩ Min
 Withstanding Voltage: 100V AC r.m.s
 Operating Temperature: -35°C~+85°C
 Material and plating
 Housing: LCP (UL 94V-0) Black
 Contacts: Copper Alloy/Gold plated on contact area and tails area

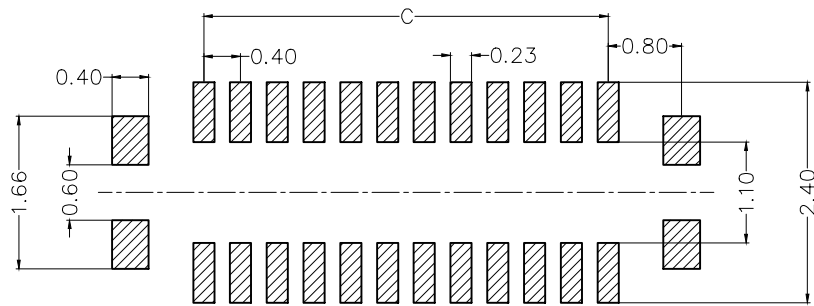


Circuits (n)	Part No.	Dimensions		
		A	B	C
10	FBB04008-M10S1XX3BKM	3.80	3.20	1.60
12	FBB04008-M12S1XX3BKM	4.20	3.60	2.00
14	FBB04008-M14S1XX3BKM	4.60	4.00	2.40
16	FBB04008-M16S1XX3BKM	5.00	4.40	2.80
20	FBB04008-M20S1XX3BKM	5.80	5.20	3.60
24	FBB04008-M24S1XX3BKM	6.60	6.00	4.40
30	FBB04008-M30S1XX3BKM	7.80	7.20	5.60
34	FBB04008-M34S1XX3BKM	8.60	8.00	6.40
40	FBB04008-M40S1XX3BKM	9.80	9.20	7.60
44	FBB04008-M44S1XX3BKM	10.60	10.00	8.40
50	FBB04008-M50S1XX3BKM	11.80	11.20	9.60

Ordering Information

FBB 040 08 — M XX S 1 XX 3 BK M
 1 2 3 4 5 6 7 8 9 10 11

1 Category FBB-Board to Board	2 Series Number 040-Pitch0.40mm	3 Distinction No. 08	4 Type M-Male	5 Circuits XX	6 Entry Angle S-180° Vertical
7 Plating 1-Gold plated	8 Thickness of Plating 01-0.025µm Custom plate available	9 Material-Resin 3-LCP	10 Color-Resin BK-Black	11 Packaging M-Reel	

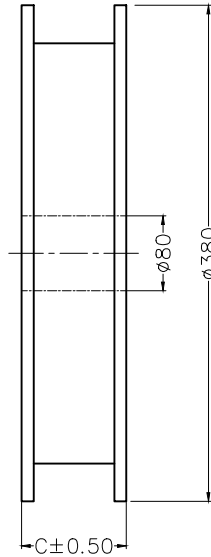
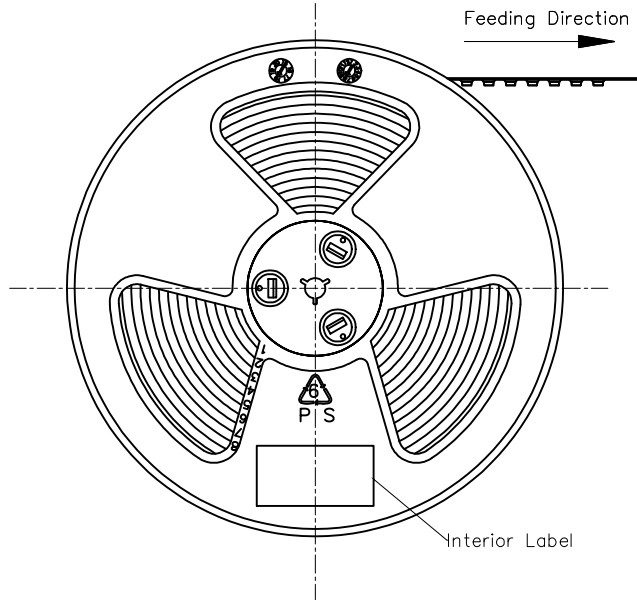


Recommended P.C.Board Layout

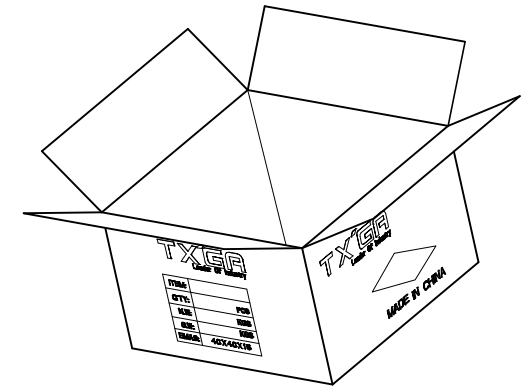
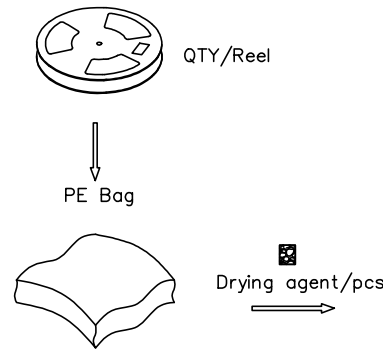
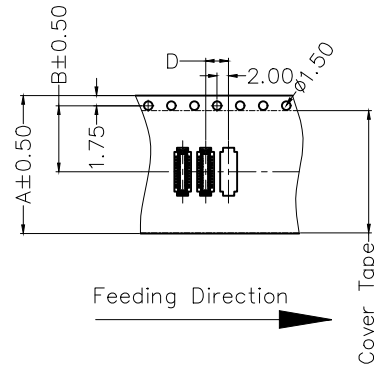
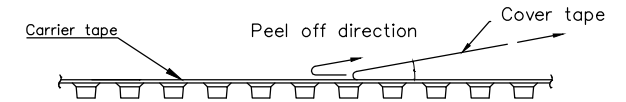
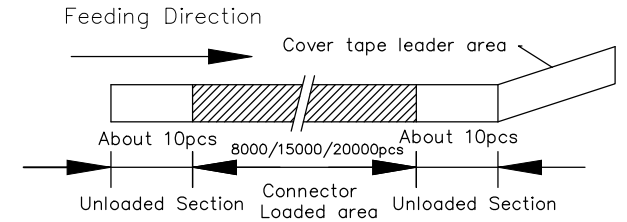
<p>THIRD ANGLE PROJECTION</p>	GENERAL TOLERANCES (UNLESS SPECIFIED)		APPROVE BY LEO	DATE 30/JAN/23	PART NO. FBB04008-MXXS1XX3BKM	ITEM NO. FBB04008-M	<p>Building Technology Cornerstone</p>
	DESIGN UNITS METRIC(mm)	X. ±0.30	X.* ±5°	CHECKED BY GISELLE	DATE 30/JAN/23	TITLE Board to Board Pitch 0.40mm 180° Vertical (SMT)	
SCALE 5:1	SIZE A4	X.XX ±0.15	X.XX* ±1°	DRAWN BY YYQ	DATE 30/JAN/23	THIS DRAWING CONTAINS INFORMATION THAT IS PROPRIETARY TO TXGA INDUSTRIAL ELECTRONICS(S.Z)CO.,LTD AND SHOULD NOT BE USED WITHOUT WRITTEN PERMISSION	
		X.XXX ±0.10	X.XXX* ±0.5°			REV 1	SHEET NO. 1/2

1 2 3 4 5 6 7 8

REV	LOCATIONS	DESCRIPTION	DATE	REVISER	APPD



- Note:
- 1.10 sprocket hole cumulative tolerance ± 0.2
 2. Carrier camber is within 1.0mm in 250mm
 3. Material: Clear conductive polystyrene Alloy 100% recyclable
 4. All dimensions meet EIA-481-3 requirements
 5. Peel off force of cover tape & carrier tape: 20g~130g (0.2N~1.3N)
 6. Component load per 15" reel: 8000/15000/20000pcs



Circuits (n)	Dimensions				QTY/REEL
	A	B	C	D	
10,12,14,16,24,30	16	7.50	17.40	4.0	20000
20	16	7.50	17.40	8.0	8000
34,50	24	11.50	25.40	4.0	20000
40	24	11.50	25.40	4.0	15000

<p>THIRD ANGLE PROJECTION</p>	GENERAL TOLERANCES (UNLESS SPECIFIED)		APPROVE BY	DATE	PART NO.	ITEM NO.	<p>Building Technology Cornerstone</p>	
	X. ± 0.30	X.* $\pm 5^{\circ}$	LEO	30/JAN/23	FBB04008-MXXS1XX3BKM	FBB04008-M		
	DESIGN UNITS METRIC(mm)	X.X ± 0.20	X.X* $\pm 2^{\circ}$	CHECKED BY	DATE	TITLE		REV 1 SHEET NO. 2/2
	SCALE 5:1 SIZE A4	X.XX ± 0.15	X.XX* $\pm 1^{\circ}$	GISELLE	30/JAN/23	Board to Board Pitch 0.40mm 180° Vertical (SMT)		
	X.XXX ± 0.10	X.XXX* $\pm 0.5^{\circ}$	DRAWN BY	DATE	THIS DRAWING CONTAINS INFORMATION THAT IS PROPRIETARY TO TXGA INDUSTRIAL ELECTRONICS(S,Z)CO.,LTD AND SHOULD NOT BE USED WITHOUT WRITTEN PERMISSION			
			YYQ	30/JAN/23				

1 2 3 4 5 6 7 8