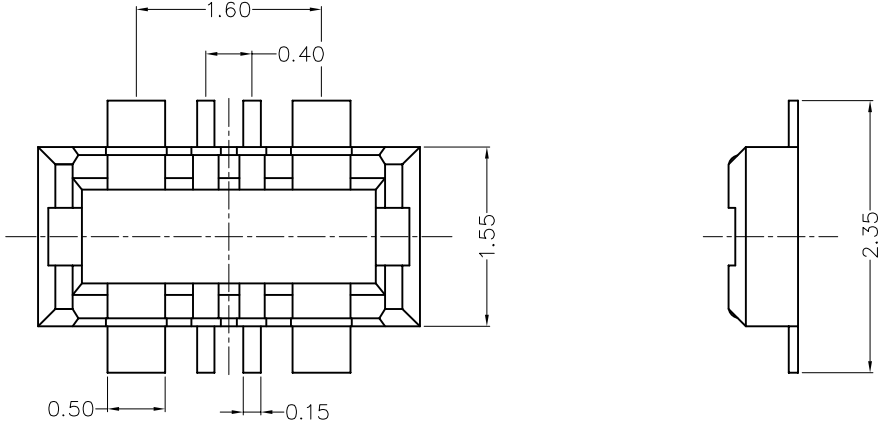


1 2 3 4 5 6 7 8

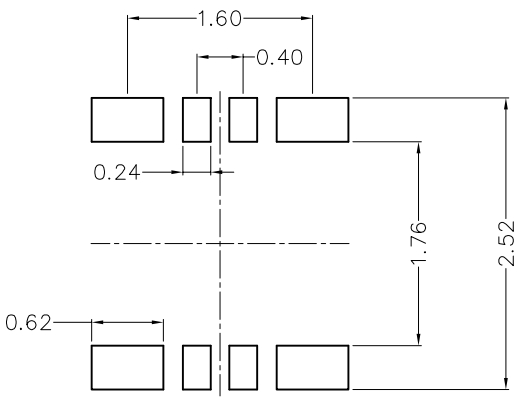
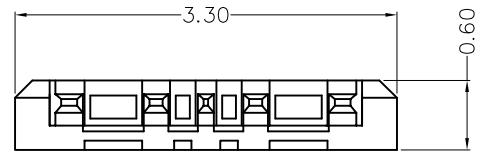
REV	LOCATIONS	DESCRIPTION	DATE	REVISER	APPD



SPECIFICATIONS

Electrical
 Current Rating: 0.3A AC(rms)/DC (Signal contact)
 3A AC(rms)/DC (Power contact)
 Voltage Rating: 30V AC(rms)/DC
 Contact Resistance: 50 mΩ Max.
 Insulation Resistance: 500 MΩ Min.
 Withstanding Voltage: 100V AC r.m.s
 Temperature Range—Operating: -25°C~+85°C

Material
 Housing: Thermoplastic (UL 94V-0), Black
 Contact: Copper alloy/ gold plated,1.25μm Min.Nickel plated over all



Recommended P.C.Board Layout
 General tolerances: ±0.05

Ordering Information

FBB 040 11 — M 08 S 1 XX 3 BK M
 1 2 3 4 5 6 7 8 9 10 11

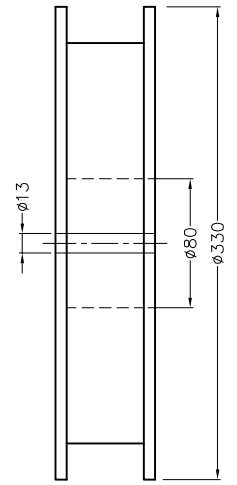
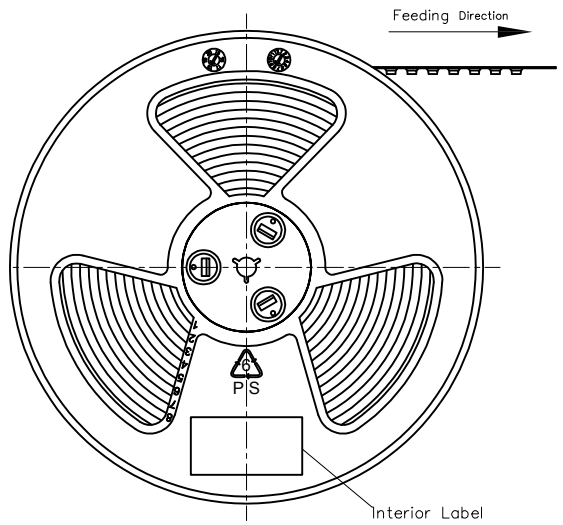
1 Category FBB—Board to Board	2 Series Number 040—Pitch 0.4mm	3 Distinction No. 11	4 Type M—Male	5 Circuits 08	6 Entry Angle S—180° Vertical	7 Plating 1—Gold plated
8 Thickness of Plating 01—0.025μm Custom plate available	9 Material—Resin 3—LCP	10 Color—Resin BK—Black	11 Packaging M—Reel			

<p>THIRD ANGLE PROJECTION</p>	GENERAL TOLERANCES (UNLESS SPECIFIED)		APPROVE BY LEO	DATE 25/AUG/23	PART NO. FBB04011—M08S1XX3BKM	ITEM NO. FBB04011	<p>Building Technology Cornerstone</p>
	X. ±0.30	X.* ±5°	CHECKED BY GISELLE	DATE 25/AUG/23	TITLE Board to Board Pitch 0.4mm 180° Vertical (SMT)		
DESIGN UNITS METRIC (mm)	X.X ±0.20	X.X* ±2°	DRAWN BY MATT	DATE 25/AUG/23	THIS DRAWING CONTAINS INFORMATION THAT IS PROPRIETARY TO TXGA INDUSTRIAL ELECTRONICS(S.Z)CO.,LTD AND SHOULD NOT BE USED WITHOUT WRITTEN PERMISSION		
SCALE 5:1	SIZE A4	X.XX ±0.15	X.XX* ±1°				
		X.XXX ±0.10	X.XXX* ±0.5°				

1 2 3 4 5 6 7 8

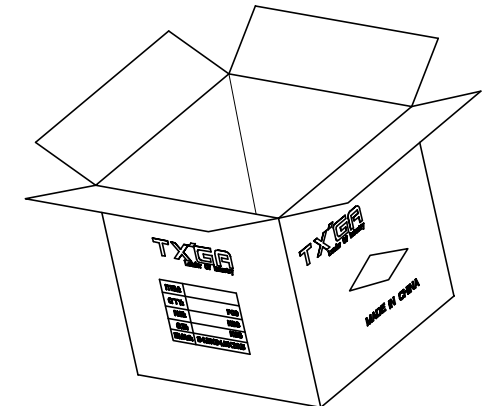
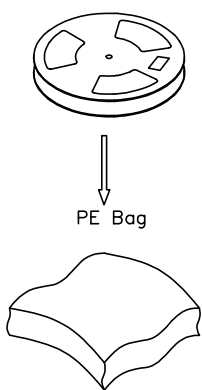
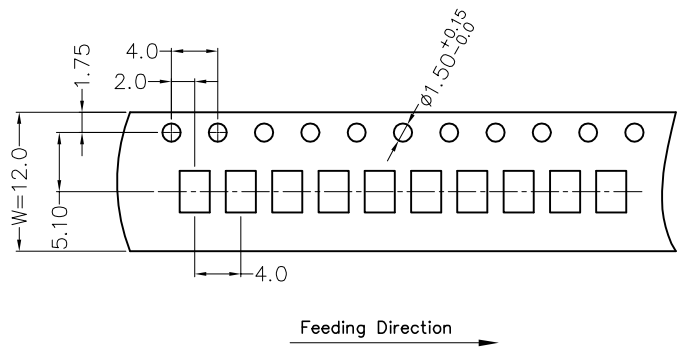
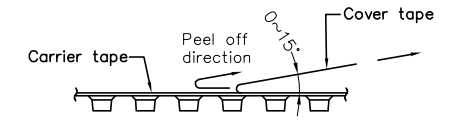
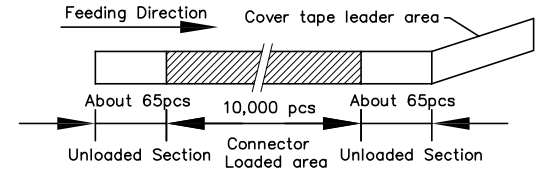
REV	LOCATIONS	DESCRIPTION	DATE	REVISER	APPD

A
B
C
D
E
F



Note:

1. 10 sprocket hole cumulative tolerance ± 0.2
2. Carrier camber is within 1mm in 100mm
3. Material: Black Conductive polystyrene Alloy 100% recyclable
4. All dimensions meet EIA-481-3 requirements
5. Component load per 13" reel: 10,000 pcs



<p>THIRD ANGLE PROJECTION</p>	GENERAL TOLERANCES (UNLESS SPECIFIED)		APPROVE BY	DATE	PART NO.	ITEM NO.	<p>Building Technology Cornerstone</p>
	X. ± 0.30	X.* $\pm 5^\circ$	LEO	25/AUG/23	FBB04011-M08S1XX3BKM	FBB04011	
	X.X ± 0.20	X.X* $\pm 2^\circ$	CHECKED BY	DATE	TITLE		
	X.XX ± 0.15	X.XX* $\pm 1^\circ$	GISELLE	25/AUG/23	Board to Board Pitch 0.4mm 180° Vertical (SMT)		
SCALE	SIZE	X.XXX ± 0.10	X.XXX* $\pm 0.5^\circ$	DRAWN BY	DATE	THIS DRAWING CONTAINS INFORMATION THAT IS PROPRIETARY TO TXGA INDUSTRIAL ELECTRONICS(S.Z)CO.,LTD AND SHOULD NOT BE USED WITHOUT WRITTEN PERMISSION	
5:1	A4			MATT	25/AUG/23	REV 0	SHEET NO. 2/2