

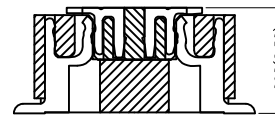
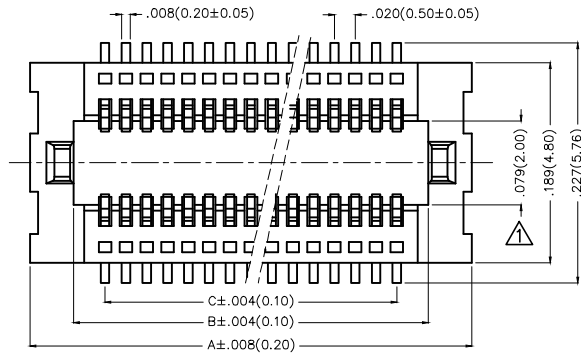
REV	LOCATIONS	DESCRIPTION	DATE	REVISER	APPD
1	△	Size changes	20/MAY/21	KATE	CHERRY

Electrical

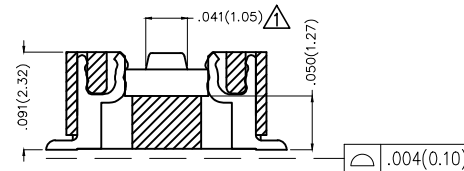
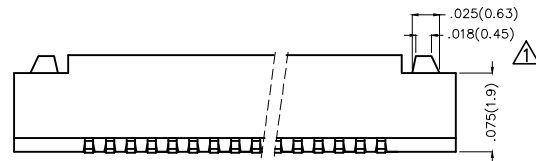
Current Rating: 0.5A AC(rms)/DC
Voltage Rating: 50V AC(rms)/DC
Contact Resistance: 40 m Ω Max
Insulation Resistance: 500 M Ω MIN
Withstanding Voltage: 250V AC r.m.s
Temperature Range—Operating: -25°C~+85°C

Material and Plating

Housing: LCP(UL 94V-0)
Contact Pin: Phosphor Bronze
Plating: Gold Plated



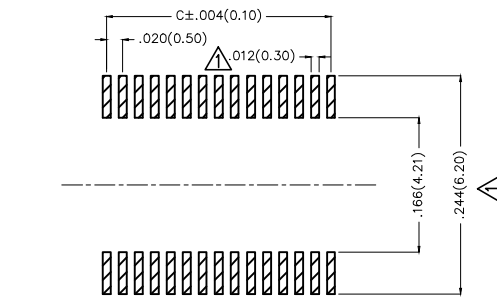
Mating Section




Ordering Information

FBB 050 01 — F XX S 1 XX 3 W5 M
1 2 3 4 5 6 7 8 9 10 11

1	Category FBB—Board To Board	2	Series Number 050—Pitch 0.5mm	3	Distinction No. 01	4	Type F—Female	5	Circuits XX	6	Entry Angle S—180° Vertical
7	Plating 1—Gold Plated	8	Thickness of Plating 00—Gold Flash 01—1 μ"	9	Material—Resin 3—LCP	10	Color—Resin W5—White	11	Packaging M—Reel		



Recommended P.C.Board Layout

THIRD ANGLE PROJECTION	GENERAL TOLERANCES (UNLESS SPECIFIED)		APPROVE BY FRANK	DATE 26/SEPT/13	PART NO. FBB05001—FXXS1XX3W5M	TEM NO. FBB05001—F	 Leader Of Industry	
	DESIGN UNITS Inch (metric)	X.±.012(0.30) X.X±.008(0.20) X.XX±.006(0.15) X.XXX±.004(0.10)	X'±5' 'X'±2' .XX'±1" .XXX'±0.5"	CHECKED BY CHERRY	DATE 26/SEPT/13	TITLE Board to Board Pitch 0.5mm 180° Vertical (SMT)		REV 1
SCALE 5:1	SIZE A4		DRAWN BY JACOB	DATE 26/SEPT/13	THIS DRAWING CONTAINS INFORMATION THAT IS PROPRIETARY TO TXGA INDUSTRIAL ELECTRONICS(S.Z)CO.,LTD AND SHOULD NOT BE USED WITHOUT WRITTEN PERMISSION			

REV	LOCATIONS	DESCRIPTION	DATE	REVISER	APPD

A

B

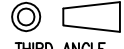

C

D

E

F

Circuits (n)	Part No.	Dimensions(in/mm)		
		A	B	C
10	FBB05001-F10S1XX3W5M	.220(5.60)	.138(3.50)	.079(2.00)
12	FBB05001-F12S1XX3W5M	.240(6.10)	.157(4.00)	.098(2.50)
14	FBB05001-F14S1XX3W5M	.260(6.60)	.177(4.50)	.118(3.00)
16	FBB05001-F16S1XX3W5M	.280(7.10)	.197(5.00)	.138(3.50)
20	FBB05001-F20S1XX3W5M	.319(8.10)	.236(6.00)	.177(4.50)
22	FBB05001-F22S1XX3W5M	.339(8.60)	.256(6.50)	.197(5.00)
24	FBB05001-F24S1XX3W5M	.358(9.10)	.276(7.00)	.217(5.50)
30	FBB05001-F30S1XX3W5M	.417(10.60)	.335(8.50)	.276(7.00)
34	FBB05001-F34S1XX3W5M	.457(11.60)	.374(9.50)	.315(8.00)
40	FBB05001-F40S1XX3W5M	.516(13.10)	.433(11.00)	.374(9.50)
50	FBB05001-F50S1XX3W5M	.614(15.60)	.531(13.50)	.472(12.00)
60	FBB05001-F60S1XX3W5M	.713(18.10)	.630(16.00)	.571(14.50)
70	FBB05001-F70S1XX3W5M	.811(20.60)	.728(18.50)	.669(17.00)
80	FBB05001-F80S1XX3W5M	.909(23.10)	.827(21.00)	.768(19.50)

 THIRD ANGLE PROJECTION	GENERAL TOLERANCES (UNLESS SPECIFIED)		APPROVE BY FRANK	DATE 26/SEPT/13	PART NO. FBB05001-FXXS1XX3W5M	TEM NO. FBB05001-F	 Leader Of Industry			
	DESIGN UNITS Inch (metric)	X.±.012(0.30) X.X±.008(0.20)	X.±5' .X'±2'	CHECKED BY CHERRY	DATE 26/SEPT/13	TITLE Board to Board Pitch 0.5mm 180° Vertical (SMT)		REV 1	SHEET NO. 2/2	
	SCALE 5:1	SIZE A4	X.XX±.006(0.15) X.XXX±.004(0.10)	DRAWN BY JACOB	DATE 26/SEPT/13	THIS DRAWING CONTAINS INFORMATION THAT IS PROPRIETARY TO TXGA INDUSTRIAL ELECTRONICS(S.Z)CO.,LTD AND SHOULD NOT BE USED WITHOUT WRITTEN PERMISSION				
			.XX'±1' .XXX'±0.5'							