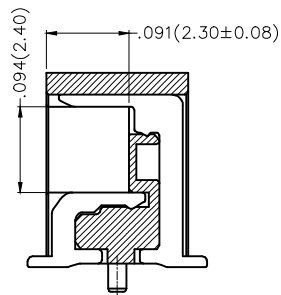
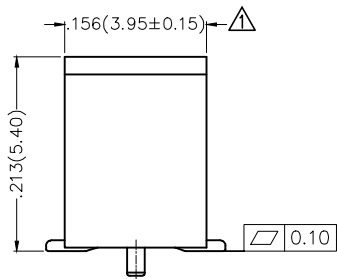
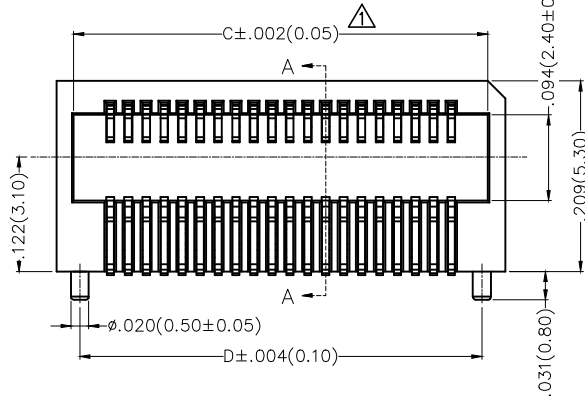
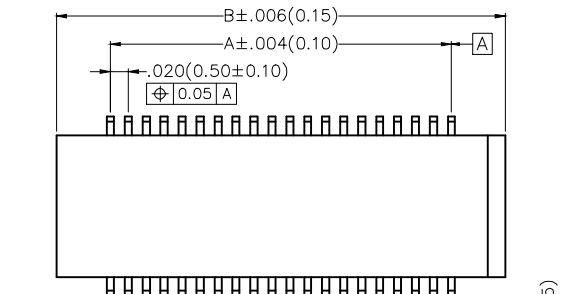


REV	LOCATIONS	DESCRIPTION	DATE	REVISER	APPD
1		Tolerances and Dimensions Change	30/AUG/22	MATT	CHERRY
2		Material change	09/MAR/26	NICK	LEO

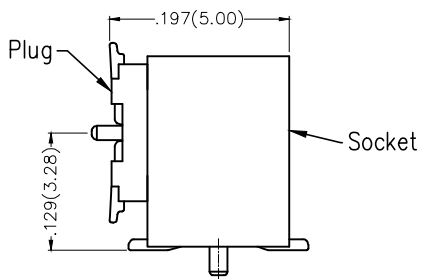
SPECIFICATIONS

Electrical
 Current Rating: 0.5A AC(rms)/DC
 Voltage Rating: 60V AC(rms)/DC
 Contact Resistance: 60 mΩ Max.
 Insulation Resistance: 800 MΩ Min.
 Withstanding Voltage: 500V AC r.m.s
 Temperature Range-Operating: -25°C~+85°C

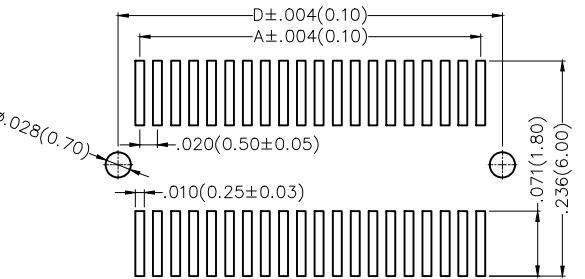
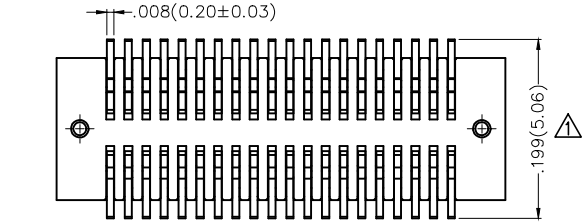
Material and Plating
 Housing: LCP (UL 94V-0)
 Contacts: Phosphor Bronze/ Gold Plated



Section A-A



Mating Section



Recommended P.C.Board Layout
 General Tolerances: ±0.05mm

Ordering Information

FBB 050 06 — F XX B 1 00 5 W5 M
 1 2 3 4 5 6 7 8 9 10 11

1 Category FBB-Board to Board	2 Series Number 050-Pitch0.50mm	3 Distinction No. 06	4 Type F-Female	5 Circuits XX	6 Entry Angle B-90° Angle
7 Plating 1-Gold Plated	8 Thickness of Plating 00-Gold Flash	9 Material-Resin 5-LCP	10 Color-Resin W5-Natural	11 Packaging M-Reel	

THIRD ANGLE PROJECTION	GENERAL TOLERANCES (UNLESS SPECIFIED)		APPROVE BY	DATE	PART NO.	ITEM NO.	 Leader Of Industry
	DESIGN UNITS Inch (metric)	X.±.012(0.30)	X.±5°	FRANK	22/FEB/17	FBB05006-FXXB1005W5M	
SCALE 5:1	X.X±.008(0.20)	.X±2°	CHECKED BY	DATE	TITLE	REV 2	SHEET NO. 1/2
SIZE A4	X.XX±.006(0.15)	.XX±1°	CHERRY	22/FEB/17	Board to Board Pitch 0.5mm 90° Angle (SMT)		
	X.XXX±.004(0.10)	.XXX±0.5°	DRAWN BY	DATE	THIS DRAWING CONTAINS INFORMATION THAT IS PROPRIETARY TO TXGA INDUSTRIAL ELECTRONICS(S,Z)CO.,LTD AND SHOULD NOT BE USED WITHOUT WRITTEN PERMISSION		
			KATE	22/FEB/17			

1 2 3 4 5 6 7 8

REV	LOCATIONS	DESCRIPTION	DATE	REVISER	APPD

A

A

B

B

C

C

D

D



E

E

F

F

Circuits (n)	Part No.	Dimensions(in/mm)			
		A	B	C	D
10	FBB05006-F10B1005W5M	.079(2.00)	.197(5.00)	.159(4.03)	.146(3.70)
12	FBB05006-F12B1005W5M	.098(2.50)	.217(5.50)	.178(4.53)	.165(4.20)
14	FBB05006-F14B1005W5M	.118(3.00)	.236(6.00)	.198(5.03)	.185(4.70)
16	FBB05006-F16B1005W5M	.138(3.50)	.256(6.50)	.218(5.53)	.205(5.20)
20	FBB05006-F20B1005W5M	.177(4.50)	.295(7.50)	.257(6.53)	.244(6.20)
22	FBB05006-F22B1005W5M	.197(5.00)	.315(8.00)	.277(7.03)	.264(6.70)
24	FBB05006-F24B1005W5M	.217(5.50)	.335(8.50)	.296(7.53)	.283(7.20)
26	FBB05006-F26B1005W5M	.236(6.00)	.354(9.00)	.316(8.03)	.303(7.70)
28	FBB05006-F28B1005W5M	.256(6.50)	.374(9.50)	.336(8.53)	.323(8.20)
30	FBB05006-F30B1005W5M	.276(7.00)	.394(10.00)	.356(9.03)	.343(8.70)
32	FBB05006-F32B1005W5M	.295(7.50)	.413(10.50)	.375(9.53)	.362(9.20)
34	FBB05006-F34B1005W5M	.315(8.00)	.433(11.00)	.395(10.03)	.382(9.70)
36	FBB05006-F36B1005W5M	.335(8.50)	.453(11.50)	.415(10.53)	.402(10.20)
40	FBB05006-F40B1005W5M	.374(9.50)	.492(12.50)	.454(11.53)	.441(11.20)
50	FBB05006-F50B1005W5M	.472(12.00)	.591(15.00)	.552(14.03)	.539(13.70)
60	FBB05006-F60B1005W5M	.571(14.50)	.689(17.50)	.651(16.53)	.638(16.20)
80	FBB05006-F80B1005W5M	.768(19.50)	.886(22.50)	.848(21.53)	.835(21.20)

 THIRD ANGLE PROJECTION	GENERAL TOLERANCES (UNLESS SPECIFIED)		APPROVE BY FRANK	DATE 22/FEB/17	PART NO. FBB05006-FXXB1005W5M	ITEM NO. FBB05006	 Leader Of Industry	
	DESIGN UNITS Inch (metric)	X.±.012(0.30) X.X±.008(0.20) X.XX±.006(0.15) X.XXX±.004(0.10)	X.±5° X.±2° .XX±1° .XXX±0.5°	CHECKED BY CHERRY	DATE 22/FEB/17	TITLE Board to Board Pitch 0.5mm 90° Angle (SMT)		
SCALE 5:1	SIZE A4	DRAWN BY KATE		DATE 22/FEB/17	THIS DRAWING CONTAINS INFORMATION THAT IS PROPRIETARY TO TXGA INDUSTRIAL ELECTRONICS(S.Z)CO.,LTD AND SHOULD NOT BE USED WITHOUT WRITTEN PERMISSION		REV 2	SHEET NO. 2/2

1 2 3 4 5 6 7 8