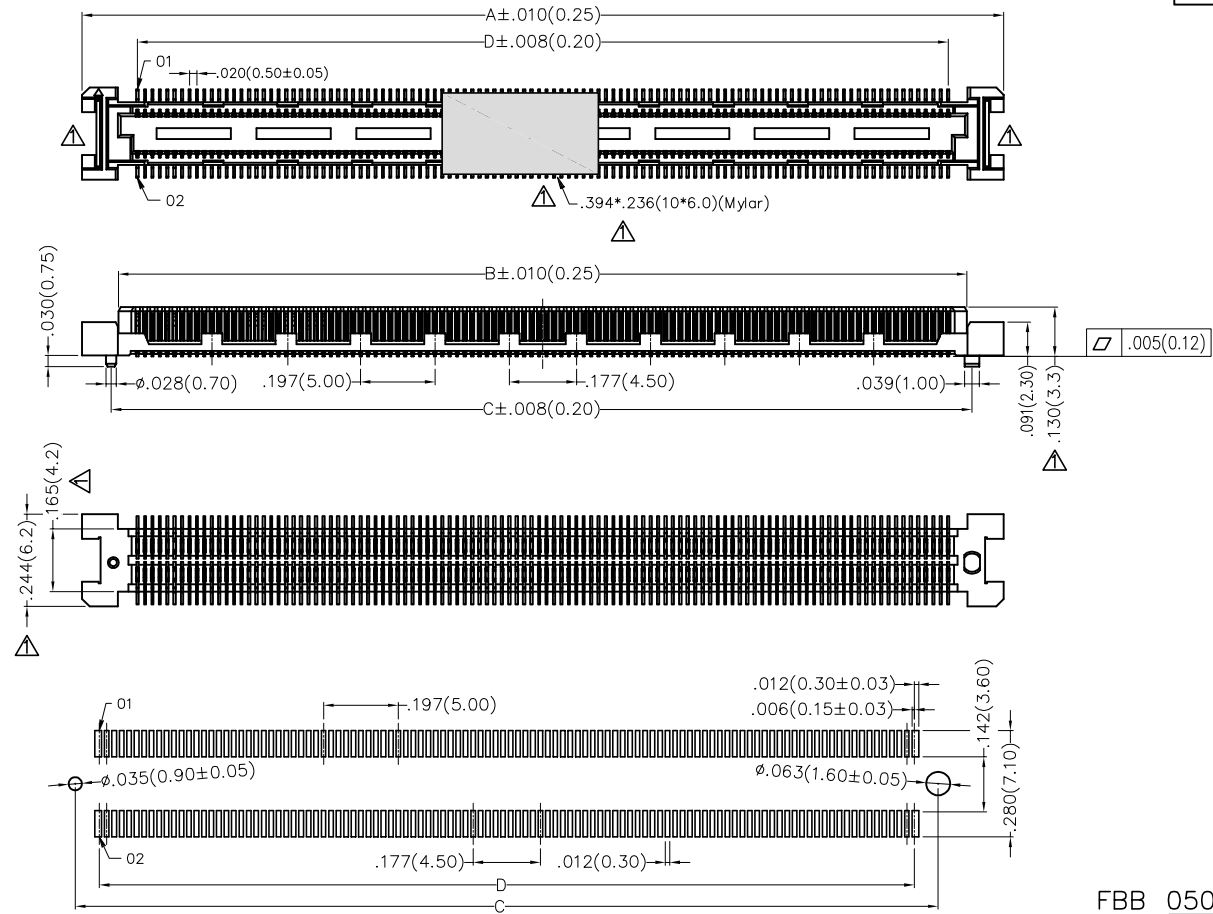


REV	LOCATIONS	DESCRIPTION	DATE	REVISER	APPD
1	△	1. Add dimensions 2. Structure change	03/JUN/20	KATE	CHERRY



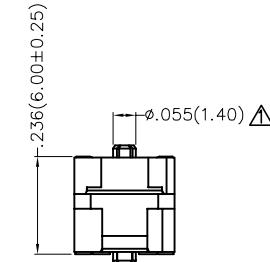
SPECIFICATIONS

Electrical

Current Rating: 0.5A AC(rms)/DC
Voltage Rating: 50V AC(rms)/DC
Contact Resistance: 55 mΩ Max.
Insulation Resistance: 100 MΩ Min.
Withstanding Voltage: 200V AC r.m.s
Temperature Range—Operating: -40°C~+85°C

Material and Plating

Housing: LCP (UL 94V-0) Black
Contacts: Phosphor Bronze/ Selective gold in contact area, tin on tail



ASSEMBLY

Recommended P.C.Board Layout
General Tolerances: ±.002(0.05)

Ordering Information

FBB 050 09 — M XXX S 3 XX 3 K6 M
1 2 3 4 5 6 7 8 9 10 11

1 Category FBB—Board to Board	2 Series Number 050—Pitch0.50mm	3 Distinction No. 09	4 Type M—Male	5 Circuits XXX	6 Entry Angle S—180° Vertical
7 Plating 3—Selective gold in contact area, tin on tail	8 Thickness of Plating 01—1μ" 03—3μ" Custom plate available	9 Material—Resin 3—LCP	10 Color—Resin K6—Black	11 Packaging M—Reel	

 THIRD ANGLE PROJECTION	GENERAL TOLERANCES (UNLESS SPECIFIED)		APPROVE BY FRANK	DATE 16/AUG/19	PART NO. FBB05009—MXXXS3XX3K6M	ITEM NO. FBB05009	 Leader Of Industry
	X.±.012(0.30)	X.±5°	CHECKED BY CHERRY	DATE 16/AUG/19	TITLE Board to Board Pitch 0.5mm 180° Vertical (SMT)		
DESIGN UNITS Inch (metric)	X.X±.008(0.20)	.X'±2°	DRAWN BY Aubrey	DATE 16/AUG/19	THIS DRAWING CONTAINS INFORMATION THAT IS PROPRIETARY TO TXGA INDUSTRIAL ELECTRONICS(S.Z)CO.,LTD AND SHOULD NOT BE USED WITHOUT WRITTEN PERMISSION		
SCALE 5:1	SIZE A4	X.XX±.006(0.15)					
		X.XXX±.004(0.10)					

1 2 3 4 5 6 7 8

REV	LOCATIONS	DESCRIPTION	DATE	REVISER	APPD

A

B



C

D

E

F

Circuits (n)	Part No.	Dimensions(in/mm)			
		A	B	C	D
80	FBB05009-M80S3XX3K6M	1.061(26.95)	.868(22.05)	.894(22.70)	.768(19.50)
100	FBB05009-M100S3XX3K6M	1.258(31.95)	1.065(27.05)	1.091(27.70)	.965(24.50)
120	FBB05009-M120S3XX3K6M	1.455(36.95)	1.262(32.05)	1.287(32.70)	1.161(29.50)
140	FBB05009-M140S3XX3K6M	1.652(41.95)	1.459(37.05)	1.484(37.70)	1.358(34.50)
144	FBB05009-M144S3XX3K6M	1.691(42.95)	1.498(38.05)	1.524(38.70)	1.398(35.50)
168	FBB05009-M168S3XX3K6M	1.927(48.95)	1.734(44.05)	1.760(44.70)	1.634(41.50)
220	FBB05009-M220S3XX3K6M	2.439(61.95)	2.246(57.05)	2.272(57.70)	2.146(54.50)

 THIRD ANGLE PROJECTION	GENERAL TOLERANCES (UNLESS SPECIFIED)		APPROVE BY FRANK	DATE 16/AUG/19	PART NO. FBB05009-MXXXS3XX3K6M	ITEM NO. FBB05009	 Leader Of Industry	
	DESIGN UNITS Inch (metric)	X.±.012(0.30) X.X±.008(0.20) X.XX±.006(0.15) X.XXX±.004(0.10)	X.±5° .X'±2° .XX'±1° .XXX'±0.5°	CHECKED BY CHERRY	DATE 16/AUG/19	TITLE Board to Board Pitch 0.5mm 180° Vertical (SMT)		
SCALE 5:1	SIZE A4	DRAWN BY Aubrey		DATE 16/AUG/19	THIS DRAWING CONTAINS INFORMATION THAT IS PROPRIETARY TO TXGA INDUSTRIAL ELECTRONICS(S.Z)CO.,LTD AND SHOULD NOT BE USED WITHOUT WRITTEN PERMISSION		REV 1	SHEET NO. 2/2

1 2 3 4 5 6 7 8