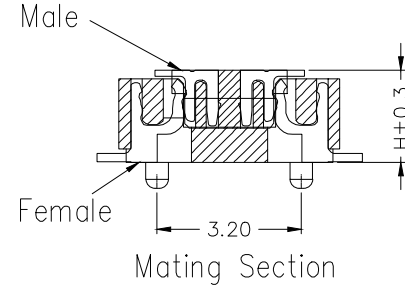
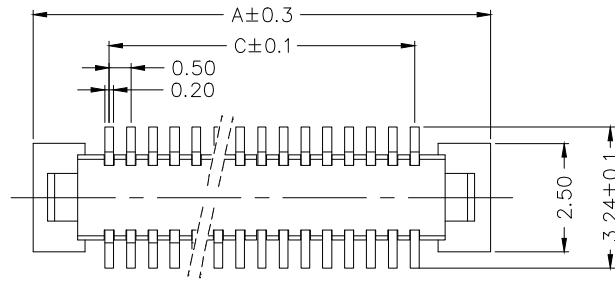


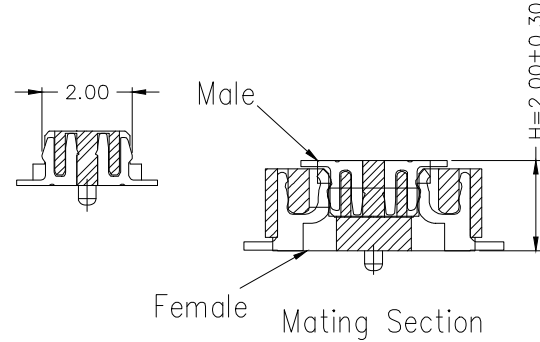
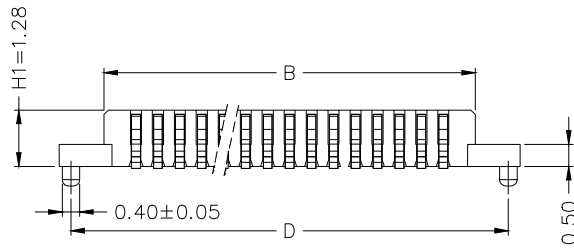
REV	LOCATIONS	DESCRIPTION	DATE	REVISER	APPD



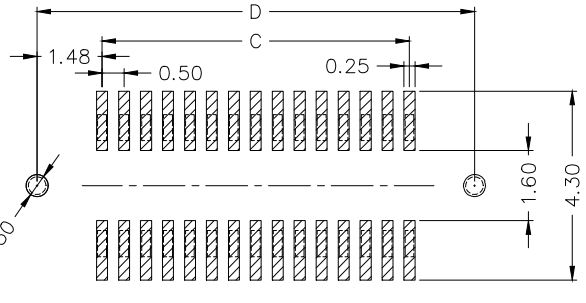
**SPECIFICATIONS**

**Electrical**  
 Current Rating: 0.5A AC(rms)/DC  
 Voltage Rating: 50V AC(rms)/DC  
 Contact Resistance: 40 mΩ Max  
 Insulation Resistance: 500 MΩ Min  
 Withstanding Voltage: 200V AC r.m.s  
 Operating Temperature: -25°C~+85°C

**Material and plating**  
 Housing: LCP (UL 94V-0)  
 Contacts: Copper Alloy/Gold plated



Circuits (n)	Part NO.	Dimensions			
		A	B	C	D
40	FBB05015-M40S1XX3NAMHXX	13.00	10.90	9.50	12.46
50	FBB05015-M50S1XX3NAMHXX	15.50	13.40	12.00	14.96
60	FBB05015-M60S1XX3NAMHXX	18.00	15.90	14.50	17.46
80	FBB05015-M80S1XX3NAMHXX	23.00	20.90	19.50	22.46



**Recommended P.C.Board Layout**  
 General tolerances: ±0.05

Height H	Dimensions(mm)			Female series
	Male H1	Female H2	Female H3	
1.50	1.28	1.35	0.27	FBB05015-F
2.50	1.28	2.35	1.27	
2.00	1.28	1.85	-	FBB05016-F

**Ordering Information**

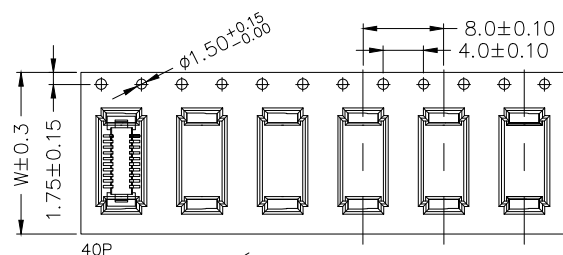
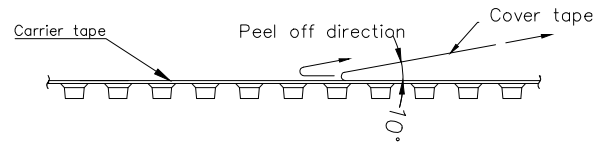
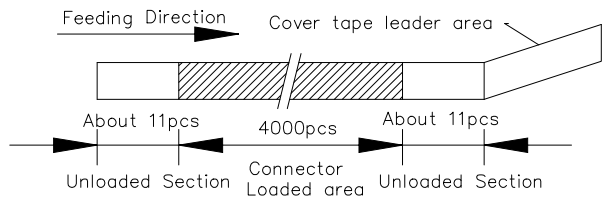
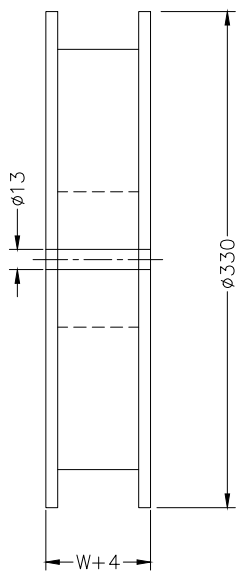
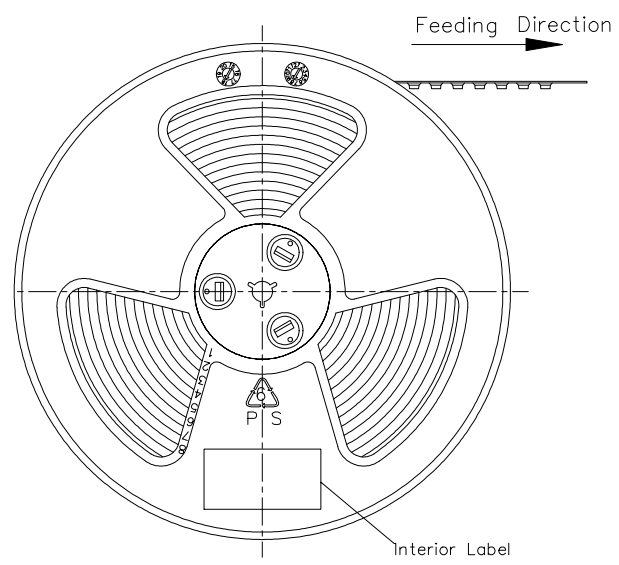
FBB 050 15 - M XX S 1 XX 3 NA M HXX  
 1 2 3 4 5 6 7 8 9 10 11 12

1   Category FBB-Board To Board	2   Series Number 050-Pitch0.80mm	3   Distinction No. 15	4   Type M-Male	5   Circuits XX	6   Entry Angle S-180°Vertical
7   Plating 1-Gold plated	8   thickness of Gold Plating 01-1u"	9   Material-Resin 3-LCP	10   Color-Resin NA-Natural	11   Packaging M-Reel	12   Male height H12-H1=1.28mm

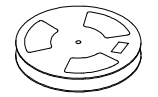
<p>THIRD ANGLE PROJECTION</p>	<b>GENERAL TOLERANCES (UNLESS SPECIFIED)</b> X. ±0.30 X.* ±5° X.X ±0.20 X.X* ±2° X.XX ±0.15 X.XX* ±1° X.XXX ±0.10 X.XXX* ±0.5°		APPROVE BY LEO	DATE 19/Sept/23	PART NO. FBB05015-MXXS1XX3NAMHXX	ITEM NO. FBB05015	<p><b>TXGA</b>                  Building Technology Cornerstone</p>	
	DESIGN UNITS METRIC(mm)	SCALE 5:1	SIZE A4	CHECKED BY GISELLE	DATE 19/Sept/23	TITLE Board to Board Pitch 0.5mm 180°Vertical (SMT)		REV 0 SHEET NO. 1/2
	DRAWN BY Hejianpeng	DATE 19/Sept/23	THIS DRAWING CONTAINS INFORMATION THAT IS PROPRIETARY TO TXGA INDUSTRIAL ELECTRONICS(S.Z)CO.,LTD AND SHOULD NOT BE USED WITHOUT WRITTEN PERMISSION					

REV	LOCATIONS	DESCRIPTION	DATE	REVISER	APPD

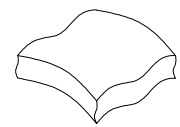
Note:  
 1.10 sprocket hole cumulative tolerance±0.2  
 2.Carrier camber is within 1.0mm in 250mm  
 3.Material: White conductive polystyrene Alloy 100% recyclable  
 4.All dimensions meet EIA-481-3 requirements  
 5.Peel off force of cover tape & carrier tape: 20g~130g (0.2N~1.3N)  
 6.Component load per 13" reel: See table



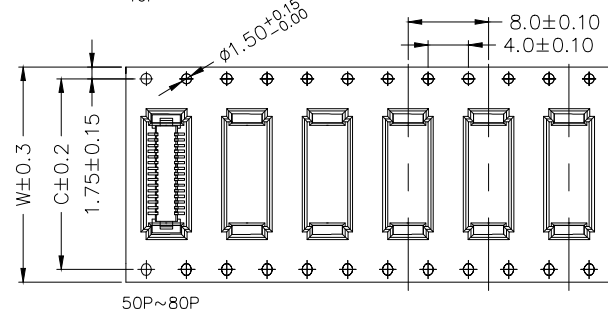
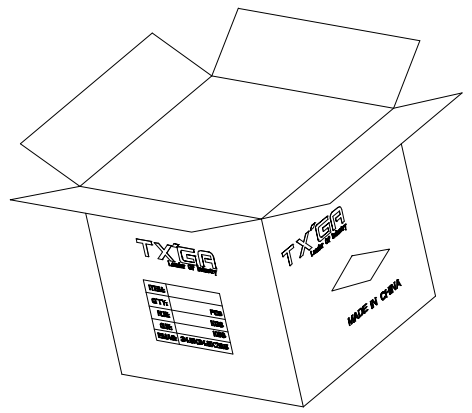
Circuits (n)	Dimensions	
	W	C
40	24	
50~60	32	28.4
80	44	40.4



PE Bag



Drying agent/pcs



Feeding Direction

<p>THIRD ANGLE PROJECTION</p>	GENERAL TOLERANCES (UNLESS SPECIFIED)		APPROVE BY LEO	DATE 19/Sept/23	PART NO. FBB05015-MXXS1XX3NAMHXX	ITEM NO. FBB05015	<p>Building Technology Cornerstone</p>	
	X. ±0.30	X.* ±5*	CHECKED BY GISELLE	DATE 19/Sept/23	TITLE Board to Board Pitch 0.5mm 180°Vertical (SMT)			REV 0 SHEET NO. 2/2
	DESIGN UNITS METRIC(mm)	X.X ±0.20	X.X* ±2*	DRAWN BY Hejianpeng	DATE 19/Sept/23	THIS DRAWING CONTAINS INFORMATION THAT IS PROPRIETARY TO TXGA INDUSTRIAL ELECTRONICS(S,Z)CO.,LTD AND SHOULD NOT BE USED WITHOUT WRITTEN PERMISSION		
	SCALE 1:1	SIZE A4	X.XX ±0.15	X.XX* ±1*	X.XXX ±0.10	X.XXX* ±0.5*		