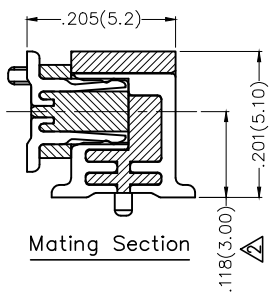
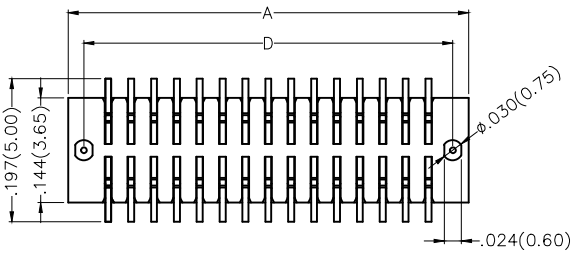
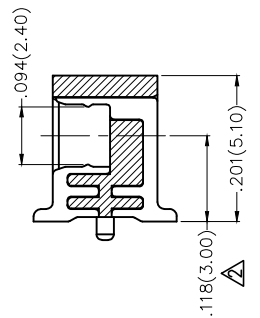
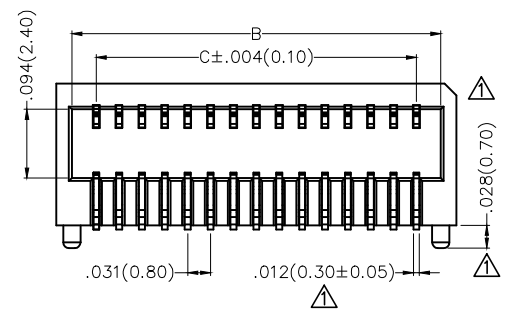


REV	LOCATIONS	DESCRIPTION	DATE	REVISER	APPD
1	△	Structure Change	26/MAY/20	KATE	CHERRY
2	△	Add dimension	09/JUN/21	KATE	CHERRY

SPECIFICATIONS

Electrical
 Current Rating: 0.5A AC(rms)/DC
 Voltage Rating: 50V AC(rms)/DC
 Contact Resistance: 90 mΩ Max.
 Insulation Resistance: 500 MΩ Min.
 Withstanding Voltage: 150V AC r.m.s
 Temperature Range—Operating: -30°C~+80°C

Material and Plating
 Housing: PA9T (UL 94V-0)
 Contacts: Phosphor Bronze/ Gold Plated

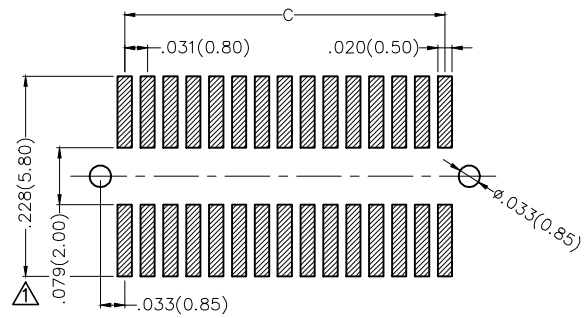


Circuits (n)	Part No.	Dimensions(in./mm)			
		A	B	C	D
10	FBB08002-F10B1XX5W5M	.236(6.00)	.193(4.90)	.126(3.20)	.193(4.90)
14	FBB08002-F14B1XX5W5M	.299(7.60)	.256(6.50)	.189(4.80)	.256(6.50)
22	FBB08002-F22B1XX5W5M	.425(10.80)	.382(9.70)	.315(8.00)	.382(9.70)
24	FBB08002-F24B1XX5W5M	.457(11.60)	.413(10.50)	.346(8.80)	.413(10.50)
28	FBB08002-F28B1XX5W5M	.520(13.20)	.476(12.10)	.409(10.40)	.476(12.10)
30	FBB08002-F30B1XX5W5M	.551(14.00)	.508(12.90)	.441(11.20)	.508(12.90)
40	FBB08002-F40B1XX5W5M	.709(18.00)	.665(16.90)	.598(15.20)	.665(16.90)

Ordering Information

FBB 080 02 — F XX B 1 XX 5 W5 M
 1 2 3 4 5 6 7 8 9 10 11

1 Category FBB—Board to Board	2 Series Number 080—Pitch0.80mm	3 Distinction No. 02	4 Type F—Female	5 Circuits XX	6 Entry Angle B—90° Angle
7 Plating 1—Gold Plated	8 Thickness of Plating 00—Gold Flash 02—2μ" Custom plate available	9 Material—Resin 5—PA9T	10 Color—Resin W5—Natural	11 Packaging M—Reel	



Recommended P.C.Board Layout
 General Tolerances: ±0.05mm

THIRD ANGLE PROJECTION	GENERAL TOLERANCES (UNLESS SPECIFIED)		APPROVE BY	DATE	PART NO.	ITEM NO.	TXGA Leader Of Industry
		X.±.012(0.30)	X.±5°	FRANK	22/FEB/17	FBB08002-FXXB1XX5W5M	
DESIGN UNITS Inch (metric)	X.X±.008(0.20)	.X°±2°	CHECKED BY	DATE	TITLE Board to Board Pitch 0.8mm 90° Angle (SMT)		REV 2 SHEET NO. 1/1
SCALE 5:1	X.XX±.006(0.15)	.XX°±1°	DRAWN BY	DATE	THIS DRAWING CONTAINS INFORMATION THAT IS PROPRIETARY TO TXGA INDUSTRIAL ELECTRONICS(S.Z)CO.,LTD AND SHOULD NOT BE USED WITHOUT WRITTEN PERMISSION		
	X.XXX±.004(0.10)	.XXX°±0.5°	KATE	22/FEB/17			