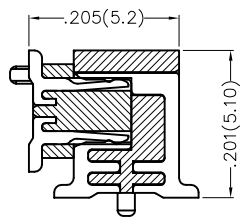
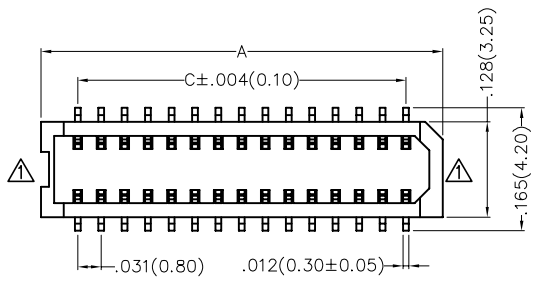


REV	LOCATIONS	DESCRIPTION	DATE	REVISER	APPD
1	△	Structure Change	26/MAY/20	KATE	CHERRY

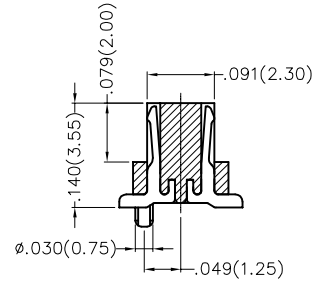
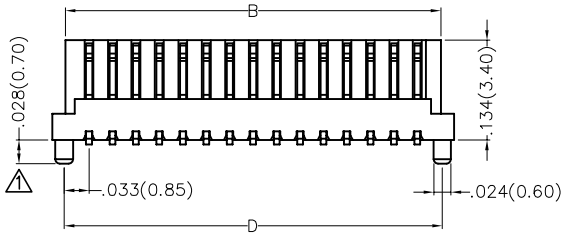
SPECIFICATIONS

Electrical
 Current Rating: 0.5A AC(rms)/DC
 Voltage Rating: 50V AC(rms)/DC
 Contact Resistance: 90 mΩ Max.
 Insulation Resistance: 500 MΩ Min.
 Withstanding Voltage: 150V AC r.m.s
 Temperature Range—Operating: -30°C~+80°C

Material and Plating
 Housing: PA9T (UL 94V-0)
 Contacts: Phosphor Bronze/ Gold Plated



Mating Section

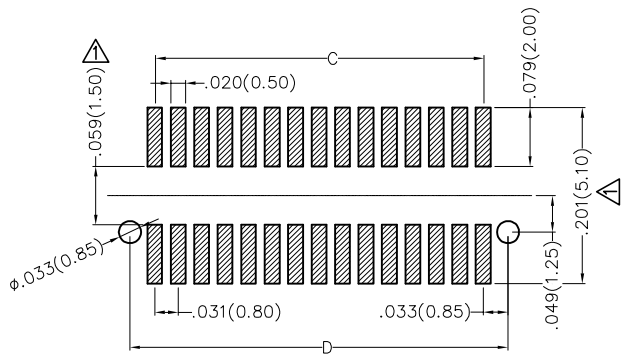


Circuits (n)	Part No.	Dimensions(in/mm)			
		A	B	C	D
10	FBB08002-M10S1XX5W5M	.224(5.70)	.189(4.80)	.126(3.20)	.193(4.90)
14	FBB08002-M14S1XX5W5M	.287(7.30)	.252(6.40)	.189(4.80)	.256(6.50)
22	FBB08002-M22S1XX5W5M	.413(10.50)	.378(9.60)	.315(8.00)	.382(9.70)
24	FBB08002-M24S1XX5W5M	.445(11.30)	.409(10.40)	.346(8.80)	.413(10.50)
28	FBB08002-M28S1XX5W5M	.508(12.90)	.472(12.00)	.409(10.40)	.476(12.10)
30	FBB08002-M30S1XX5W5M	.539(13.70)	.504(12.80)	.441(11.20)	.508(12.90)
40	FBB08002-M40S1XX5W5M	.697(17.70)	.661(16.80)	.598(15.20)	.665(16.90)


Ordering Information

FBB 080 02 — M XX S 1 XX 5 W5 M
 1 2 3 4 5 6 7 8 9 10 11

1 Category FBB—Board to Board	2 Series Number 080—Pitch0.80mm	3 Distinction No. 02	4 Type M—Male	5 Circuits XX	6 Entry Angle S—180° Vertical
7 Plating 1—Gold Plated	8 Thickness of Plating 00—Gold Flash 02—2μ Custom plate available	9 Material—Resin 5—PA9T	10 Color—Resin W5—Natural	11 Packaging M—Reel	



Recommended P.C.Board Layout
 General Tolerances: ±0.05mm

THIRD ANGLE PROJECTION	GENERAL TOLERANCES (UNLESS SPECIFIED)		APPROVE BY FRANK	DATE 22/FEB/17	PART NO. FBB08002-MXXS1XX5W5M	ITEM NO. FBB08002	 Leader Of Industry
	DESIGN UNITS Inch (metric)	X.±.012(0.30) X.±5° X.X±.008(0.20) .X'±2°	CHECKED BY CHERRY	DATE 22/FEB/17	TITLE Board to Board Pitch 0.8mm 180° Vertical (SMT)	REV 1	
SCALE 5:1	SIZE A4	X.XX±.006(0.15) .XX'±1° X.XXX±.004(0.10) .XXX'±0.5°	DRAWN BY KATE	DATE 22/FEB/17	THIS DRAWING CONTAINS INFORMATION THAT IS PROPRIETARY TO TXGA INDUSTRIAL ELECTRONICS(S.Z)CO.,LTD AND SHOULD NOT BE USED WITHOUT WRITTEN PERMISSION		