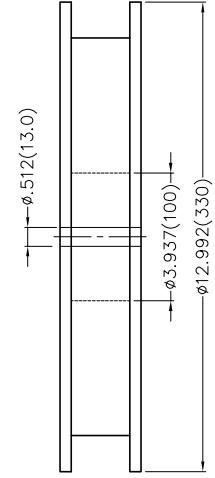
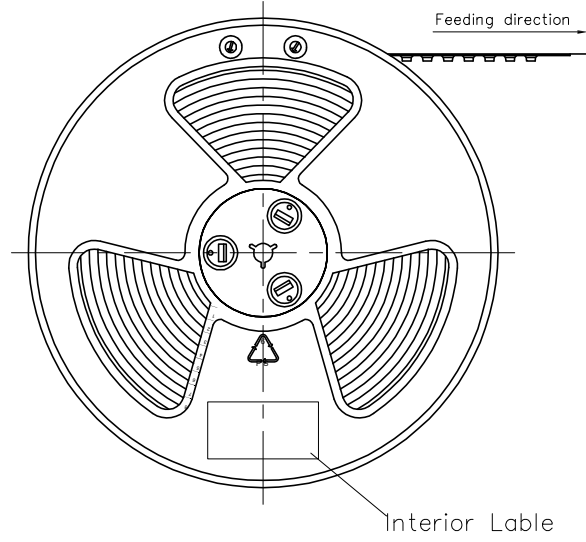


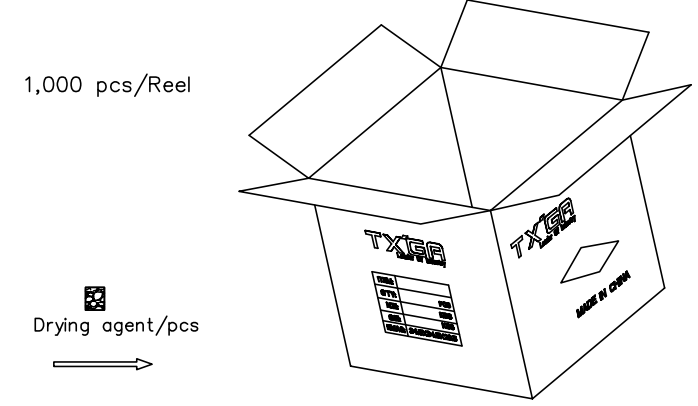
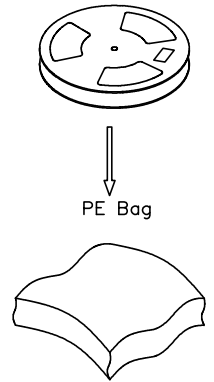
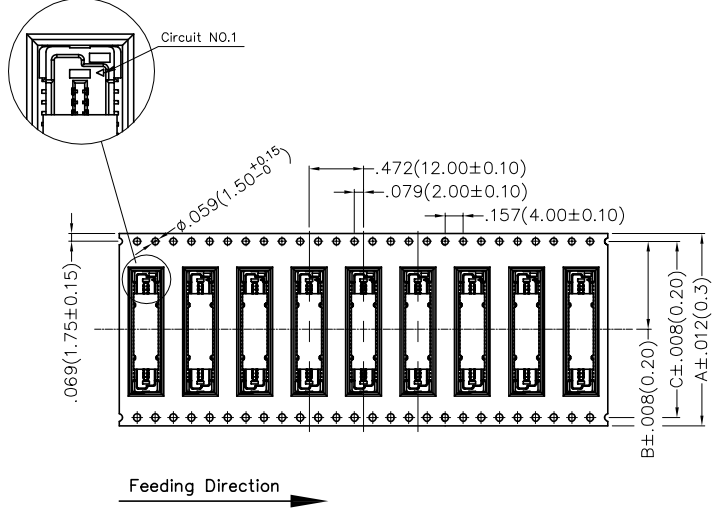
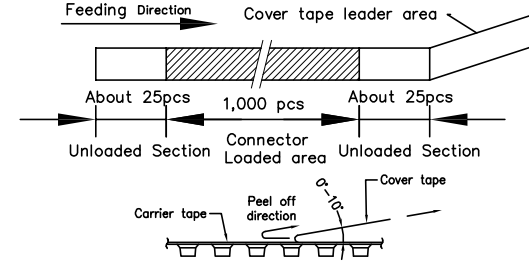
| REV | LOCATIONS | DESCRIPTION | DATE | REVISER | APPD |
|-----|-----------|-------------|------|---------|------|
| | | | | | |

Note:

- 10 sprocket hole cumulative tolerance ± 0.2
- Carrier camber is within 1.0mm in 100mm
- Material: Black Conductive polystyrene Alloy 100% recyclable
- All dimensions meet EIA-481-D requirements
- Component load per 13" reel: 1,000 pcs



| Circuits (n) | Dimensions(in/mm) | | |
|--------------|-------------------|--------------|--------------|
| | A | B | C |
| 40~60 | 1.732(44.0) | .797(20.25) | 1.594(40.50) |
| 80 | 2.205(56.0) | 1.033(26.25) | 2.067(52.50) |
| 100~140 | 2.835(72.0) | 1.348(34.25) | 2.697(68.50) |



| | | | | | | | |
|-------------------------------|---------------------------------------|------------------|------------|-----------|---|--|---------------------------|
| <p>THIRD ANGLE PROJECTION</p> | GENERAL TOLERANCES (UNLESS SPECIFIED) | | APPROVE BY | DATE | PART NO. | ITEM NO. | <p>Leader Of Industry</p> |
| | X.±.012(0.30) | X.±5' | FRANK | 14/AUG/19 | FBB08006-MXXS1XX3W5M | FBB08006 | |
| | X.X±.008(0.20) | .X'±2' | CHECKED BY | DATE | TITLE | | |
| | X.XX±.006(0.15) | .XX'±1' | CHERRY | 14/AUG/19 | Board to Board Pitch 0.8mm 180° Vertical (SMT) | REV 3 | |
| SCALE | SIZE | X.XXX±.004(0.10) | .XX'±0.5' | DRAWN BY | DATE | THIS DRAWING CONTAINS INFORMATION THAT IS PROPRIETARY TO TXGA INDUSTRIAL ELECTRONICS(S.Z)CO.,LTD AND SHOULD NOT BE USED WITHOUT WRITTEN PERMISSION | |
| 5:1 | A4 | | | ZOEY | 14/AUG/19 | | |