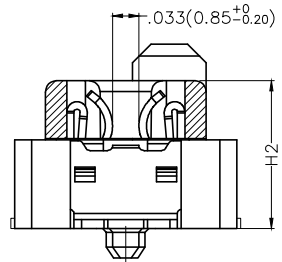
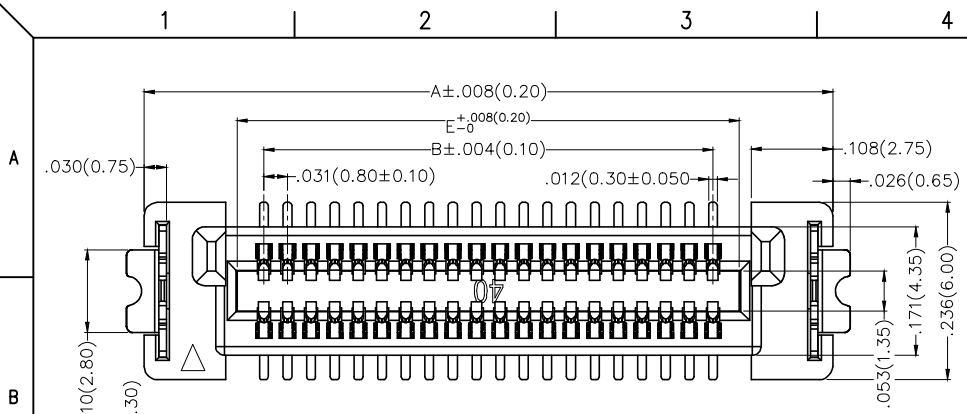


REV	LOCATIONS	DESCRIPTION	DATE	REVISER	APPD
1	△	1.Number upgrade/2.Add height series/3.Add packaging drawings	21/MAY/25	NICK	LEO

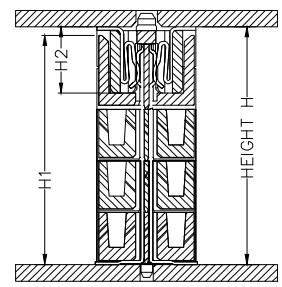
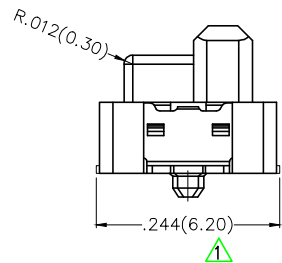
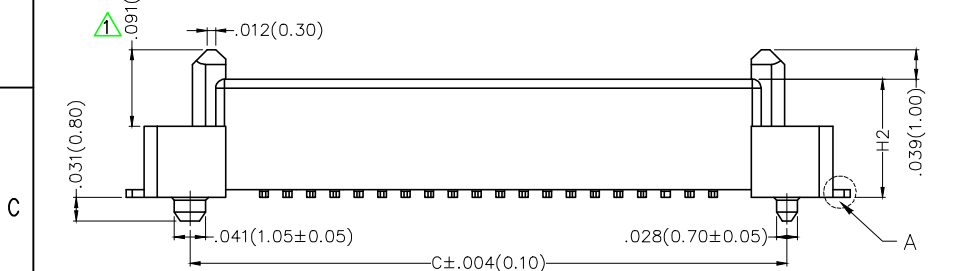


Scale 1.25:1

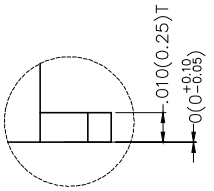
SPECIFICATIONS

Electrical
 Current Rating: 0.5A AC(rms)/DC
 Voltage Rating: 50V AC(rms)/DC
 Contact Resistance: 50 mΩ Max.
 Insulation Resistance: 100 MΩ Min.
 Withstanding Voltage: 200V AC r.m.s
 Temperature Range—Operating: -35°C~+85°C

Material and Plating
 Housing: LCP (UL 94V-0)
 Contacts: Phosphor Bronze/ Selective gold in contact area, tin on tail



Dimensions(in/mm)		
Height H	Male H1	Female H2
.197(5.0)	.177(4.50)	.157(4.00)
.315(8.0)	.295(7.50)	.157(4.00)
.394(10.0)	.177(4.50)	.354(9.00)
.511(13.0)	.295(7.50)	.354(9.00)
.591(15.0)	.374(9.50)	.354(9.00)

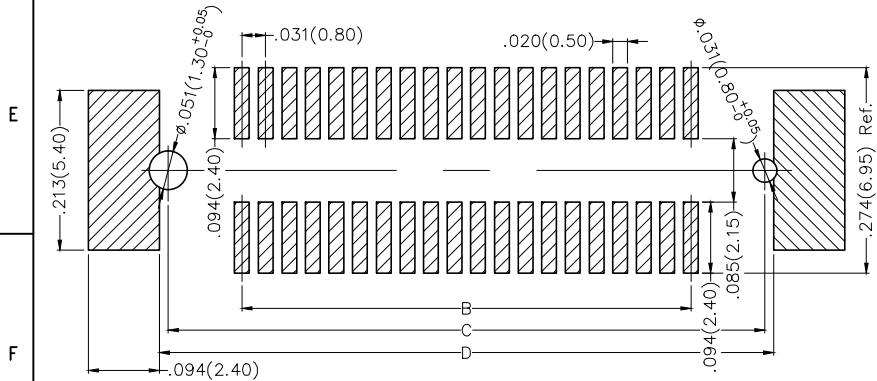


Detail 'A'
Scale 8:1

Ordering Information

FBB 080 08 — F XX S 3 XX 3 K6 M XXX
 1 2 3 4 5 6 7 8 9 10 11 12

1 Category FBB—Board to Board	2 Series Number 080—Pitch0.80mm	3 Distinction No. 08	4 Type F—Female	5 Circuits XX	6 Entry Angle S—180° Vertical
7 Plating 3—Selective gold in contact area, tin on tail	8 Thickness of Plating 00—Gold flash 03—3μ" Custom plate available	9 Material—Resin 3—LCP	10 Color—Resin K6—Black	11 Packaging M—Reel	12 Female height H40—H2=4mm H90—H2=9mm



Recommended P.C.Board Layout
General Tolerances: ±0.05mm

THIRD ANGLE PROJECTION		GENERAL TOLERANCES (UNLESS SPECIFIED)		APPROVE BY	DATE	PART NO.	ITEM NO.	TXGA Leader Of Industry
		X.±.012(0.30)	X.±5°	FRANK	21/AUG/19	FBB08008—FXXS3XX3K6MHXX	FBB08008	
DESIGN UNITS Inch (metric)		X.X±.008(0.20)	X.±2°	CHECKED BY	DATE	TITLE Board to Board Pitch 0.8mm 180° Vertical (SMT)		
SCALE 5:1	SIZE A4	X.XX±.006(0.15)	.XX±1°	CHERRY	21/AUG/19	REV 1 SHEET NO. 1/3		
		X.XXX±.004(0.10)	.XXX±0.5°	DRAWN BY	DATE	THIS DRAWING CONTAINS INFORMATION THAT IS PROPRIETARY TO TXGA INDUSTRIAL ELECTRONICS(S,Z)CO.,LTD AND SHOULD NOT BE USED WITHOUT WRITTEN PERMISSION		
				KATE	21/AUG/19			

1 2 3 4 5 6 7 8

REV	LOCATIONS	DESCRIPTION	DATE	REVISER	APPD

A

B



C

D

E

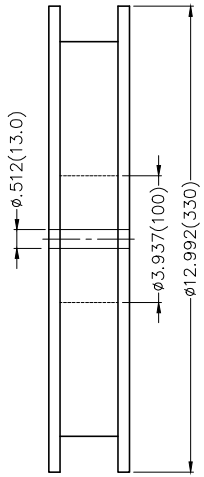
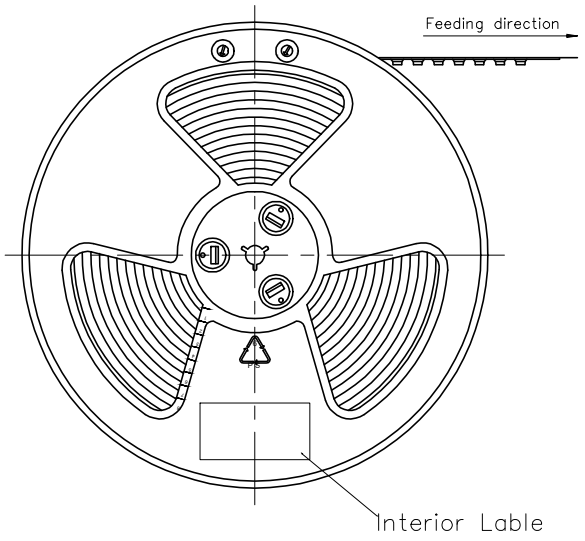
F

Circuits (n)	Part No.	Dimensions(in/mm)				
		A	B	C	D	E
20	FBB08008-F20S3XX3K6MHXX	.602(15.30)	.283(7.20)	.480(12.20)	.503(12.80)	.350(8.90)
30	FBB08008-F30S3XX3K6MHXX	.760(19.30)	.441(11.20)	.638(16.20)	.661(16.80)	.508(12.90)
40	FBB08008-F40S3XX3K6MHXX	.917(23.30)	.598(15.20)	.795(20.20)	.819(20.80)	.665(16.90)
50	FBB08008-F50S3XX3K6MHXX	1.075(27.30)	.756(19.20)	.953(24.20)	.976(24.80)	.823(20.90)
60	FBB08008-F60S3XX3K6MHXX	1.232(31.30)	.913(23.20)	1.110(28.20)	1.134(28.80)	.980(24.90)
70	FBB08008-F70S3XX3K6MHXX	1.390(35.30)	1.071(27.20)	1.268(32.20)	1.291(32.80)	1.138(28.90)
80	FBB08008-F80S3XX3K6MHXX	1.547(39.30)	1.228(31.20)	1.425(36.20)	1.449(36.80)	1.295(32.90)
100	FBB08008-F100S3XX3K6MHXX	1.862(47.30)	1.543(39.20)	1.740(44.20)	1.764(44.80)	1.610(40.90)

 THIRD ANGLE PROJECTION	GENERAL TOLERANCES (UNLESS SPECIFIED)		APPROVE BY FRANK	DATE 21/AUG/19	PART NO. FBB08008-FXXS3XX3K6MHXX	ITEM NO. FBB08008	 Leader Of Industry	
	DESIGN UNITS Inch (metric)	$X \pm .012(0.30)$ $X.X \pm .008(0.20)$ $X.XX \pm .006(0.15)$ $X.XXX \pm .004(0.10)$	$X \pm 5^\circ$ $.X \pm 2^\circ$ $.XX \pm 1^\circ$ $.XXX \pm 0.5^\circ$	CHECKED BY CHERRY	DATE 21/AUG/19	TITLE Board to Board Pitch 0.8mm 180° Vertical (SMT)		
SCALE 5:1	SIZE A4	DRAWN BY KATE		DATE 21/AUG/19	THIS DRAWING CONTAINS INFORMATION THAT IS PROPRIETARY TO TXGA INDUSTRIAL ELECTRONICS(S.Z)CO.,LTD AND SHOULD NOT BE USED WITHOUT WRITTEN PERMISSION		REV 1	SHEET NO. 2/3

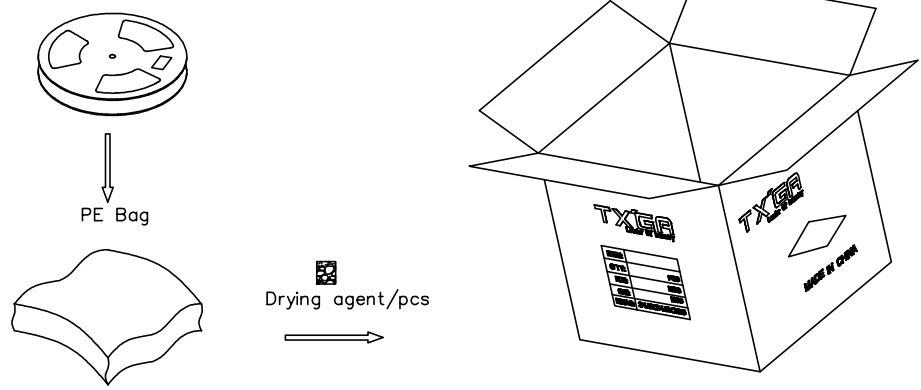
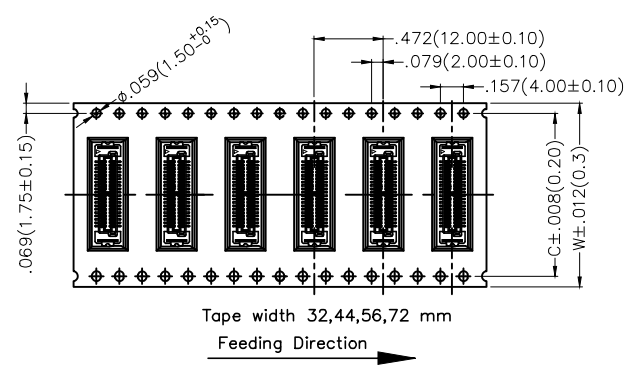
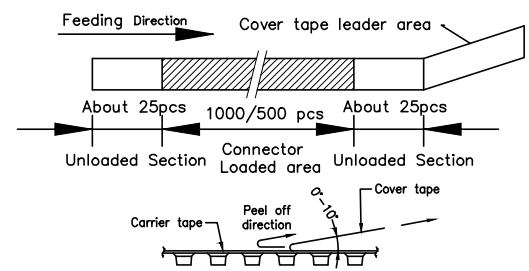
1 2 3 4 5 6 7 8

REV	LOCATIONS	DESCRIPTION	DATE	REVISED	APPD



- Note:
- 10 sprocket hole cumulative tolerance ± 0.2
 - Carrier camber is within 1.0mm in 100mm
 - Material: Black Conductive polystyrene Alloy 100% recyclable
 - All dimensions meet EIA-481-B requirements
 - Component load per 13" reel: See table

Circuits (n)	Dimensions(in/mm)		pcs/Reel H2=4.0	pcs/Reel H2=9.0
	W	C		
20-30	1.260(32.0)	1.118(28.4)	1000PCS	500PCS
40-50	1.732(44.0)	1.591(40.4)	1000PCS	500PCS
60-80	2.205(56.0)	2.062(52.4)	1000PCS	500PCS
100	2.834(72.0)	2.692(68.4)	1000PCS	500PCS



<p>THIRD ANGLE PROJECTION</p>	GENERAL TOLERANCES (UNLESS SPECIFIED)		APPROVE BY FRANK	DATE 21/AUG/19	PART NO. FBB08008-FXXS3XX3K6MHXX	ITEM NO. FBB08008	<p>Building Technology Cornerstone</p>	
	X.±.012(0.30)	X.±5'	CHECKED BY CHERRY	DATE 21/AUG/19	TITLE Board to Board Pitch 0.8mm 180° Vertical (SMT)			REV 1
	DESIGN UNITS Inch (metric)	X.X±.008(0.20)	.X'±2'	DRAWN BY KATE	DATE 21/AUG/19	THIS DRAWING CONTAINS INFORMATION THAT IS PROPRIETARY TO TXGA INDUSTRIAL ELECTRONICS(S.Z)CO.,LTD AND SHOULD NOT BE USED WITHOUT WRITTEN PERMISSION		SHEET NO. 3/3
	SCALE 5:1	SIZE A4	X.XX±.006(0.15)					