

Recommended P.C.Board Layout  
General Tolerances:  $\pm 0.002(0.05)$

REV	LOCATIONS	DESCRIPTION	DATE	REVISER	APPD
1	△	Material Change, Packaging Change.	6/MAR/26	HJP	CHERRY

SPECIFICATIONS

Electrical  
 Current Rating: 0.5A AC(rms)/DC  
 Voltage Rating: 50V AC(rms)/DC  
 Contact Resistance: 50 mΩ Max.  
 Insulation Resistance: 100 MΩ Min.  
 Withstanding Voltage: 200V AC r.m.s  
 Temperature Range—Operating:  $-30^{\circ}\text{C}\sim+80^{\circ}\text{C}$

Material and Plating  
 Housing: PA9T (UL 94V-0)  
 △ Contacts: Brass/ Gold Plated

Dimensions(in/mm)			
Height H	Female H1	Male H2	Male E
.157(4.00)	.118(3.00)	.039(1.00)	.157(4.00)
.177(4.50)	.138(3.50)	.039(1.00)	
.197(5.00)	.118(3.00)	.079(2.00)	
.197(5.00)	.157(4.00)	.039(1.00)	
.217(5.50)	.138(3.50)	.079(2.00)	
.217(5.50)	.177(4.50)	.039(1.00)	
.236(6.00)	.157(4.00)	.079(2.00)	.173(4.40)
.256(6.50)	.177(4.50)	.079(2.00)	
.276(7.00)	.118(3.00)	.157(4.00)	
.295(7.50)	.138(3.50)	.157(4.00)	
.315(8.00)	.157(4.00)	.157(4.00)	
.335(8.50)	.177(4.50)	.157(4.00)	

Ordering Information



FBB 080 09 — M XX S 1 XX 5 K6 M HXX  
 1 2 3 4 5 6 7 8 9 10 11 12

- 1 Category: FBB—Board to Board
- 2 Series Number: 080—Pitch0.80mm
- 3 Distinction No.: 09
- 4 Type: M—Male
- 5 Circuits: XX
- 6 Entry Angle: S—180° Vertical
- 7 Plating: 1—Gold Plated
- 8 Thickness of Plating: 01—1u", 03—3u", Custom plate available
- 9 Material—Resin: 5—PA9T
- 10 Color—Resin: K6—Black
- 11 Packaging: M—Reel
- 12 Male height: H10—H2=1.00mm, H20—H2=2.00mm, H40—H2=4.00mm

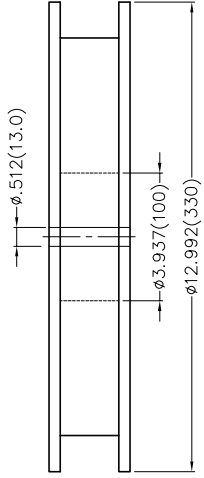
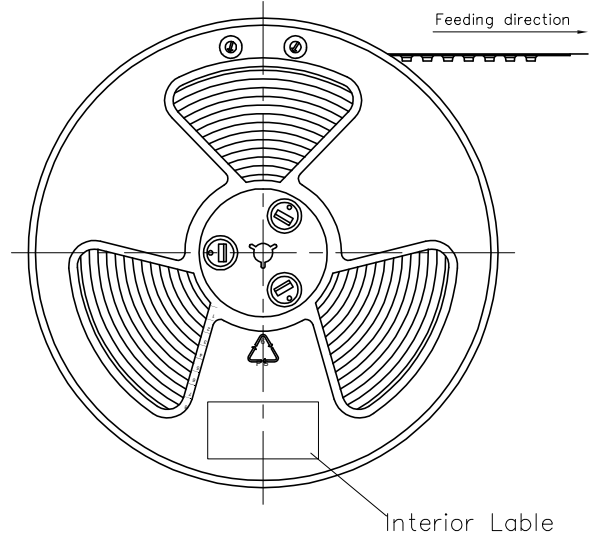
THIRD ANGLE PROJECTION	GENERAL TOLERANCES (UNLESS SPECIFIED)		APPROVE BY	DATE	PART NO.	ITEM NO.	 Leader Of Industry
	X.±.012(0.30)	X.±5'	FRANK	21/AUG/19	FBB08009—MXXS1XX5K6MHXX	FBB08009	
DESIGN UNITS	X.X±.008(0.20)	X.±2'	CHECKED BY	DATE	TITLE		REV 1 SHEET NO. 1/3
Inch (metric)	X.XX±.006(0.15)	.XX±1'	CHERRY	21/AUG/19	Board to Board Pitch 0.8mm 180° Vertical (SMT)		
SCALE	X.XXX±.004(0.10)	.XXX±0.5'	DRAWN BY	DATE	THIS DRAWING CONTAINS INFORMATION THAT IS PROPRIETARY TO TXGA INDUSTRIAL ELECTRONICS(S.Z)CO.,LTD AND SHOULD NOT BE USED WITHOUT WRITTEN PERMISSION		
5:1			KATE	21/AUG/19			

REV	LOCATIONS	DESCRIPTION	DATE	REVISER	APPD

Circuits (n)	Part No.	Dimensions(in/mm)			
		A	B	C	D
8	FBB08009-M08S1XX5K6MHXX	.201(5.10)	.094(2.40)	.134(3.40)	.165(4.20)
10	FBB08009-M10S1XX5K6MHXX	.232(5.90)	.126(3.20)	.165(4.20)	.197(5.00)
12	FBB08009-M12S1XX5K6MHXX	.264(6.70)	.157(4.00)	.197(5.00)	.228(5.80)
14	FBB08009-M14S1XX5K6MHXX	.295(7.50)	.189(4.80)	.228(5.80)	.260(6.60)
16	FBB08009-M16S1XX5K6MHXX	.327(8.30)	.220(5.60)	.260(6.60)	.291(7.40)
18	FBB08009-M18S1XX5K6MHXX	.358(9.10)	.252(6.40)	.291(7.40)	.323(8.20)
20	FBB08009-M20S1XX5K6MHXX	.390(9.90)	.283(7.20)	.323(8.20)	.354(9.00)
22	FBB08009-M22S1XX5K6MHXX	.421(10.70)	.315(8.00)	.354(9.00)	.386(9.80)
24	FBB08009-M24S1XX5K6MHXX	.453(11.50)	.346(8.80)	.386(9.80)	.417(10.60)
28	FBB08009-M28S1XX5K6MHXX	.516(13.10)	.409(10.40)	.449(11.40)	.480(12.20)
30	FBB08009-M30S1XX5K6MHXX	.547(13.90)	.441(11.20)	.480(12.20)	.512(13.00)
32	FBB08009-M32S1XX5K6MHXX	.579(14.70)	.472(12.00)	.512(13.00)	.543(13.80)
34	FBB08009-M34S1XX5K6MHXX	.610(15.50)	.504(12.80)	.543(13.80)	.575(14.60)
36	FBB08009-M36S1XX5K6MHXX	.642(16.30)	.535(13.60)	.575(14.60)	.606(15.40)
40	FBB08009-M40S1XX5K6MHXX	.705(17.90)	.598(15.20)	.638(16.20)	.669(17.00)
<del>42</del>	<del>FBB08009-M42S1XX5K6MHXX</del>	<del>.736(18.70)</del>	<del>.630(16.00)</del>	<del>.669(17.00)</del>	<del>.701(17.80)</del>
44	FBB08009-M44S1XX5K6MHXX	.768(19.50)	.661(16.80)	.701(17.80)	.732(18.60)
<del>46</del>	<del>FBB08009-M46S1XX5K6MHXX</del>	<del>.799(20.30)</del>	<del>.693(17.60)</del>	<del>.732(18.60)</del>	<del>.764(19.40)</del>
50	FBB08009-M50S1XX5K6MHXX	.862(21.90)	.756(19.20)	.795(20.20)	.827(21.00)
60	FBB08009-M60S1XX5K6MHXX	1.020(25.90)	.913(23.20)	.953(24.20)	.984(25.00)
70	FBB08009-M70S1XX5K6MHXX	1.177(29.90)	1.071(27.20)	1.110(28.20)	1.142(29.00)
80	FBB08009-M80S1XX5K6MHXX	1.335(33.90)	1.228(31.20)	1.268(32.20)	1.299(33.00)
100	FBB08009-M100S1XX5K6MHXX	1.650(41.90)	1.543(39.20)	1.583(40.20)	1.614(41.00)

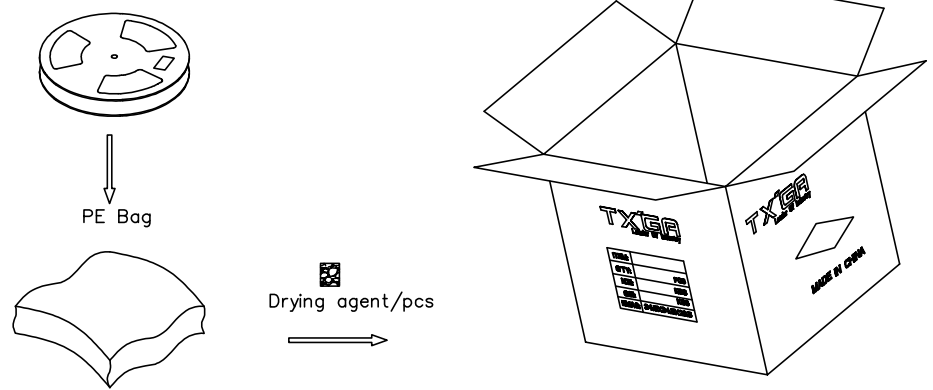
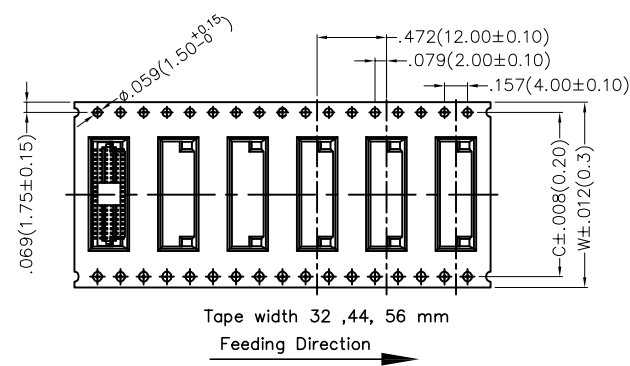
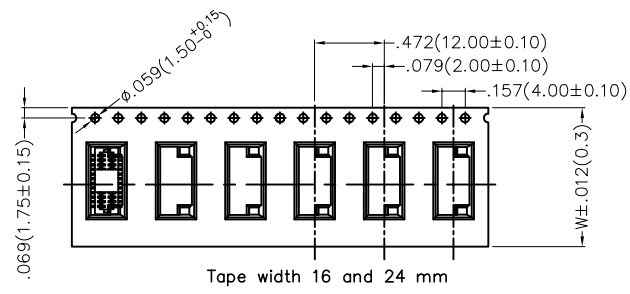
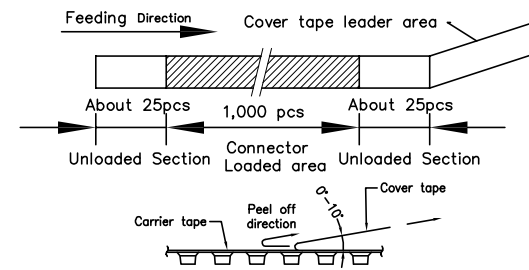
 THIRD ANGLE PROJECTION	GENERAL TOLERANCES (UNLESS SPECIFIED)		APPROVE BY FRANK	DATE 21/AUG/19	PART NO. FBB08009-MXXS1XX5K6MHXX	ITEM NO. FBB08009	 Leader Of Industry			
	DESIGN UNITS Inch (metric)	X.±.012(0.30) X.X±.008(0.20)	X'.±5' X'.±2'	CHECKED BY CHERRY	DATE 21/AUG/19	TITLE Board to Board Pitch 0.8mm 180° Vertical (SMT)		REV 1	SHEET NO. 2/3	
	SCALE 5:1	SIZE A4	X.XX±.006(0.15) X.XXX±.004(0.10)	DRAWN BY KATE	DATE 21/AUG/19	THIS DRAWING CONTAINS INFORMATION THAT IS PROPRIETARY TO TXGA INDUSTRIAL ELECTRONICS(S.Z)CO.,LTD AND SHOULD NOT BE USED WITHOUT WRITTEN PERMISSION				

REV	LOCATIONS	DESCRIPTION	DATE	REVISER	APPD



- Note:
- 10 sprocket hole cumulative tolerance  $\pm 0.2$
  - Carrier camber is within 1.0mm in 100mm
  - Material: Black Conductive polystyrene Alloy 100% recyclable
  - All dimensions meet EIA-481-B requirements
  - Component load per 13" reel: See table

Circuits (n)	Dimensions(in/mm)		pcs/Reel	
	W	C	H2=1.0,2.0	H2=4.0
8~12	.630(16.0)	-	1000PCS	700PCS
16	.945(24.0)	-	1500PCS	700PCS
14,18~30	.945(24.0)	-	1000PCS	700PCS
32~44	1.260(32.0)	1.118(28.4)	1000PCS	700PCS
46~80	1.732(44.0)	1.591(40.4)	1000PCS	700PCS
82~100	2.205(56.0)	2.063(52.4)	1000PCS	700PCS



 THIRD ANGLE PROJECTION DESIGN UNITS Inch (metric) SCALE 5:1 SIZE A4	GENERAL TOLERANCES (UNLESS SPECIFIED) X. $\pm$ .012(0.30) X.' $\pm$ 5' X.XX $\pm$ .008(0.20) X.' $\pm$ 2' X.XX $\pm$ .006(0.15) .XX' $\pm$ 1' X.XXX $\pm$ .004(0.10) .XXX' $\pm$ 0.5'		APPROVE BY FRANK CHECKED BY CHERRY DRAWN BY MATT	DATE 14/AUG/20 DATE 14/AUG/20 DATE 14/AUG/20	PART NO. FBB08009-MXXS1XX5K6MHXX TITLE Board to Board Pitch 0.8mm 180° Vertical (SMT) THIS DRAWING CONTAINS INFORMATION THAT IS PROPRIETARY TO TXGA INDUSTRIAL ELECTRONICS(S.Z)CO.,LTD AND SHOULD NOT BE USED WITHOUT WRITTEN PERMISSION	ITEM NO. FBB08009 REV 1 SHEET NO. 3/3	 Leader Of Industry
--	---	--	--	--	--	---	------------------------