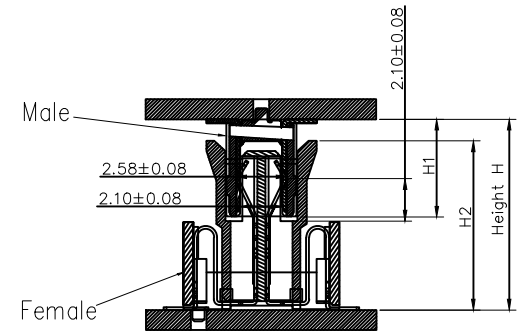
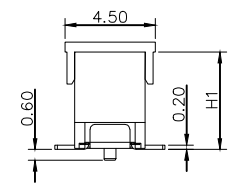


Recommended P.C.Board Layout
General tolerances: ± 0.05



Mating Section



REV	LOCATIONS	DESCRIPTION	DATE	REVISER	APPD

SPECIFICATIONS

Electrical
 Current Rating: 0.5A AC(rms)/DC
 Voltage Rating: 50V AC(rms)/DC
 Contact Resistance: 100 mΩ Max
 Insulation Resistance: 500 MΩ Min
 Withstanding Voltage: 250V AC r.m.s
 Operating Temperature: $-40^{\circ}\text{C} \sim +125^{\circ}\text{C}$
 Floating Range $\pm 0.5\text{mm}$ in X,Y,Z directions
 Material and plating
 Housing: LCP (UL 94V-0)
 Contacts: Phosphor Bronze/Gold plated

Dimensions(mm)		
Height H	Male H1	Female H2
9.75	4.80	8.45
11.75	6.80	8.45
12.75	7.80	8.45
14.00	9.05	8.45

Circuits (n)	Part NO.	Dimensions				
		A	B	C	D	E
30	FBB08013-M30S1XX3BKM HXX	11.2	13.0	14.4	16.3	16.1
40	FBB08013-M40S1XX3BKM HXX	15.2	17.0	18.4	20.3	20.1
60	FBB08013-M60S1XX3BKM HXX	23.2	25.0	26.4	28.3	28.1
80	FBB08013-M80S1XX3BKM HXX	31.2	33.0	34.4	36.3	36.1

Ordering Information

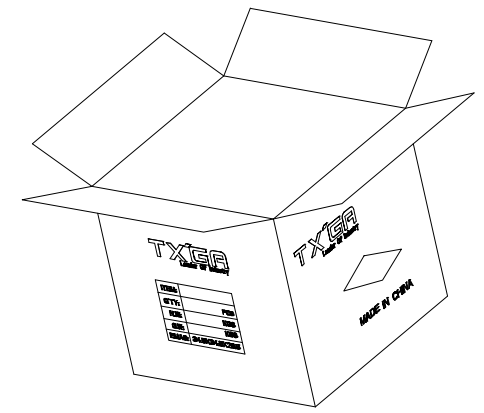
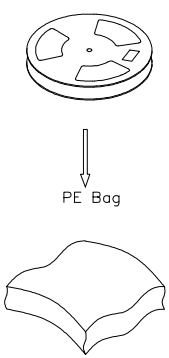
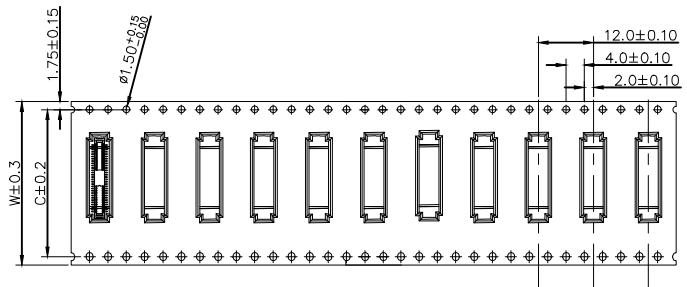
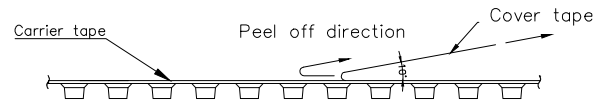
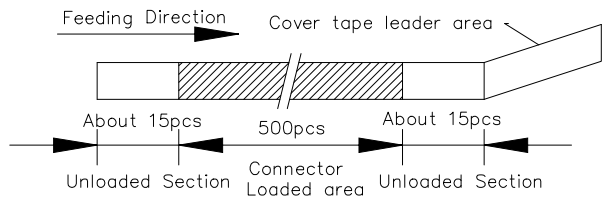
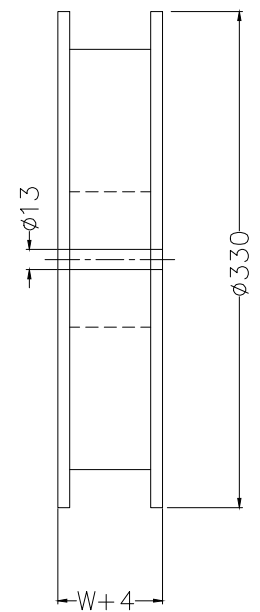
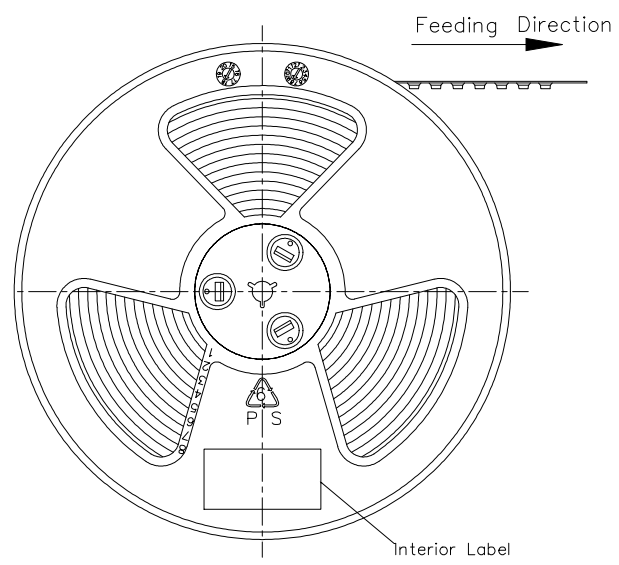
FBB 080 13 — M XX S 1 XX 3 BK M HXX
 1 2 3 4 5 6 7 8 9 10 11 12

1 Category FBB-Board To Board	2 Series Number 080-Pitch 0.80mm	3 Distinction No. 13	4 Type M-Male	5 Circuits XX	6 Entry Angle S-180°Vertical
7 Plating 1-Gold plated	8 thickness of Gold Plating 02-2u" 03-3u" 30-30u"	9 Material-Resin 3-LCP	10 Color-Resin BK-Black	11 Packaging M-Reel	12 Male height H48-H1=4.80mm H68-H1=6.80mm H78-H1=7.80mm H91-H1=9.05mm

 THIRD ANGLE PROJECTION	GENERAL TOLERANCES (UNLESS SPECIFIED)		APPROVE BY LEO	DATE 19/Sept/23	PART NO. FBB08013-MXXS1XX3BKM HXX	ITEM NO. FBB08013	 Building Technology Cornerstone
	DESIGN UNITS METRIC(mm)	X. ± 0.30	X.* $\pm 5^{\circ}$	CHECKED BY GISELLE	DATE 19/Sept/23	TITLE Board to Board Floating Connector Pitch 0.8mm 180°Vertical (SMT)	
SCALE 5:1	SIZE A4	X.XX ± 0.15	X.XX* $\pm 1^{\circ}$	DRAWN BY Hejianpeng	DATE 19/Sept/23	THIS DRAWING CONTAINS INFORMATION THAT IS PROPRIETARY TO TXGA INDUSTRIAL ELECTRONICS(S.Z)CO.,LTD AND SHOULD NOT BE USED WITHOUT WRITTEN PERMISSION	

REV	LOCATIONS	DESCRIPTION	DATE	REVISER	APPD

Note:
 1.10 sprocket hole cumulative tolerance±0.2
 2.Carrier camber is within 1.0mm in 250mm
 3.Material: White conductive polystyrene Alloy 100% recyclable
 4.All dimensions meet EIA-481-3 requirements
 5.Peel off force of cover tape & carrier tape: 20g~130g (0.2N~1.3N)
 6.Component load per 13" reel: See table



Circuits (n)	Dimensions		pcs/Reel		
	W	C	H1=4.80	H1=6.80/7.80	H1=9.05
30~40	32.0	28.4	1000PCS	600PCS	500PCS
50~60	44.0	40.4	1000PCS	600PCS	500PCS
80	72.0	68.4	1000PCS	600PCS	500PCS

<p>THIRD ANGLE PROJECTION</p>	GENERAL TOLERANCES (UNLESS SPECIFIED)		APPROVE BY	DATE	PART NO.	ITEM NO.	<p>Building Technology Cornerstone</p>	
	X. ±0.30	X.* ±5°	LEO	19/Sept/23	FBB08013-MXXS1XX3BKMHX	FBB08013		
	DESIGN UNITS METRIC(mm)		CHECKED BY	DATE	TITLE		REV 0	SHEET NO. 2/2
	X.X ±0.20	X.X* ±2°	GISELLE	19/Sept/23	Board to Board Floating Connector Pitch 0.8mm 180°Vertical (SMT)		THIS DRAWING CONTAINS INFORMATION THAT IS PROPRIETARY TO TXGA INDUSTRIAL ELECTRONICS(S,Z)CO.,LTD AND SHOULD NOT BE USED WITHOUT WRITTEN PERMISSION	
SCALE 1:1	SIZE A4	X.XX ±0.15	X.XX* ±1°	DRAWN BY	DATE	THIS DRAWING CONTAINS INFORMATION THAT IS PROPRIETARY TO TXGA INDUSTRIAL ELECTRONICS(S,Z)CO.,LTD AND SHOULD NOT BE USED WITHOUT WRITTEN PERMISSION		
		X.XXX ±0.10	X.XXX* ±0.5°	Hejianpeng	19/Sept/23			