

REV	LOCATIONS	DESCRIPTION	DATE	REVISER	APPD
1	△	Plating changes	03/JUN/21	KATE	CHERRY

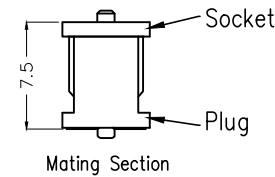
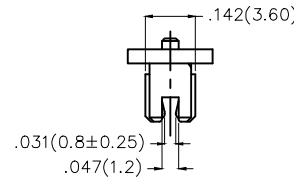
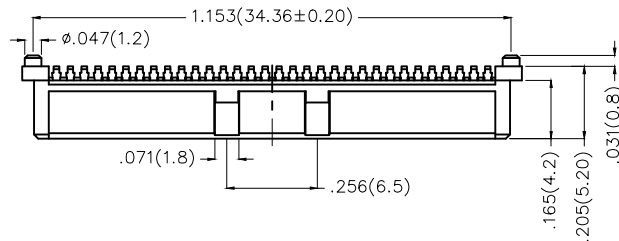
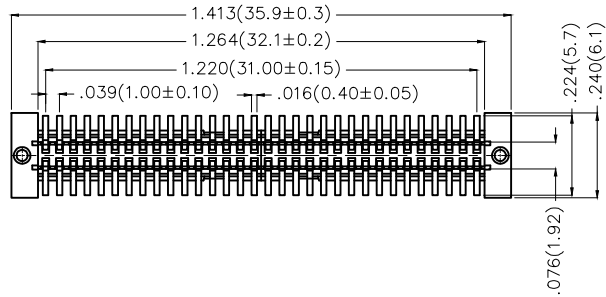
**Electrical**

Current Rating: 1.0A AC(rms)/DC  
Voltage Rating: 50V AC(rms)/DC  
Contact Resistance: 50 mΩ Max  
Insulation Resistance: 500 MΩ MIN  
Withstanding Voltage: 150V AC r.m.s  
Temperature Range—Operating: -40°C~+105°C

**Material and Plating**

Housing: LCP( UL 94V-0)  
Contact Pin: Phosphor Bronze

△ Plating: Selective gold plated on contact area and matte tin plated on tails area

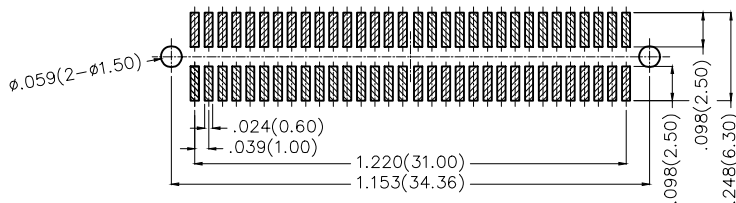


**Ordering Information**


FBB 100 01 — F 64 S 7 XX 3 W5 M  
1 2 3 4 5 6 7 8 9 10 11

1	Category FBB—Board To Board	2	Series Number 100—Pitch 1.0mm	3	Distinction No. 01	4	Type F—Female	5	Circuits 64	6	Entry Angle S—180° Vertical
7	Plating 7—Selective gold on contact area, matte tin on tail	8	Thickness of Plating 00—Gold Flash 02—2μ"	9	Material—Resin 3—LCP	10	Color—Resin W5—Natural	11	Packaging M—Reel		

△ Custom plate available



Recommended P.C.Board Layout

THIRD ANGLE PROJECTION	GENERAL TOLERANCES (UNLESS SPECIFIED)		APPROVE BY FRANK	DATE 26/SEPT/13	PART NO. FBB10001-F64S7XX3W5M	TEM NO. FBB10001-F	 Leader Of Industry	
	DESIGN UNITS Inch (metric)	X.±.012(0.30) X.X±.008(0.20) X.XX±.006(0.15) X.XXX±.004(0.10)	X.'±5' .X'±2' .XX'±1' .XXX'±0.5'	CHECKED BY CHERRY	DATE 26/SEPT/13	TITLE Board to Board Pitch 1.0mm 180° Vertical (SMT)		REV 1
SCALE 5:1	SIZE A4	DRAWN BY JACOB		DATE 26/SEPT/13	THIS DRAWING CONTAINS INFORMATION THAT IS PROPRIETARY TO TXGA INDUSTRIAL ELECTRONICS(S.Z)CO.,LTD AND SHOULD NOT BE USED WITHOUT WRITTEN PERMISSION			