

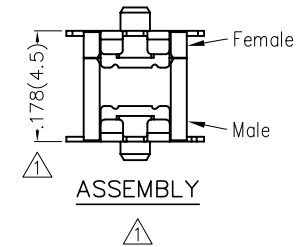
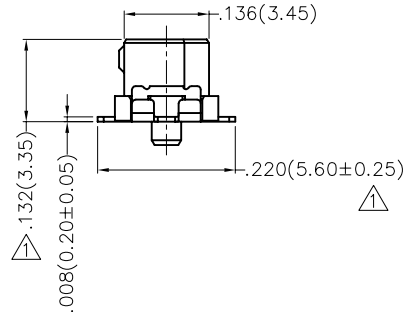
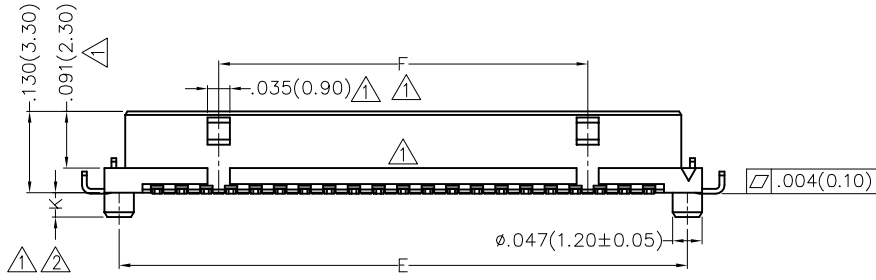
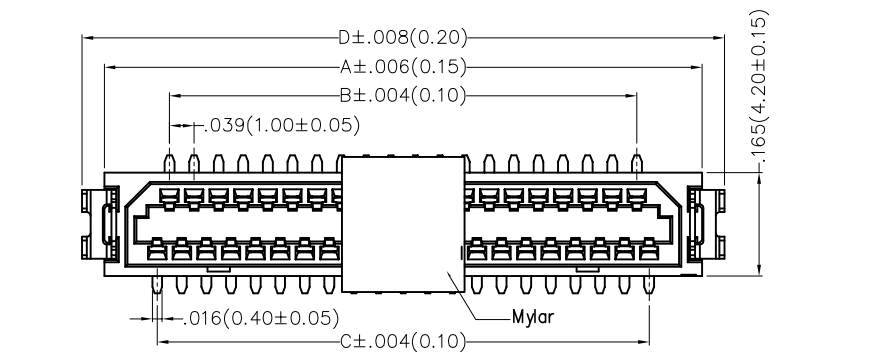
REV	LOCATIONS	DESCRIPTION	DATE	REVISER	APPD
1	①	Change the structure and size	31/AUG/20	KATE	CHERRY
2	②	Positioning column size change	22/NOV/24	MATT	LEO

Electrical

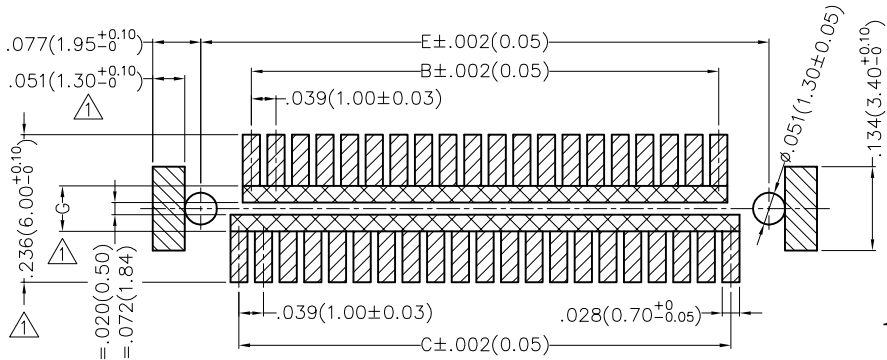
Current Rating: 0.5A AC(rms)/DC
Voltage Rating: 50V AC(rms)/DC
Contact Resistance: 50 mΩ Max
Insulation Resistance: 500 MΩ
Withstanding Voltage: 250V AC r.m.s
Temperature Range-Operating: -45°C~+125°C

Material and Plating

Housing: LCP (UL94V-0)
Contact Pin: Phosphor Bronze
Plating: Selective gold on contact area, tin on tail



ASSEMBLY



Recommended P.C.B Layout(Top Side)

PCB Board Tolerance: ±.001(0.05)

Note 1: If the pattern is included in the shaded area and not treated with resist, it could touch the connector contact.

Note 2 : Please refer to each product size pattern for the universal size on the above patterns (A, B, C, D...).

Ordering Information

FBB 100 03 - F XX S 3 XX 3 W5 M
1 2 3 4 5 6 7 8 9 10 11

1	Category FBB-Board To Board	2	Series Number 100-Pitch1.0mm	3	Distinction No. 03	4	Type F-Female	5	Circuits XX	6	Entry Angle S-180° Vertical
7	Plating 3-Selective gold in contact area, tin on tail	8	Thickness of Plating 01-1μ" 05-5μ" Custom plate available	9	Material-Resin 3-LCP	10	Color-Resin W5-Natural	11	Packaging M-Reel		

THIRD ANGLE PROJECTION		GENERAL TOLERANCES (UNLESS SPECIFIED)		APPROVE BY	DATE	PART NO.	ITEM NO.	TXGA Leader Of Industry
DESIGN UNITS Inch (metric)	X.±.012(0.30)	X.±5°	FRANK	14/AUG/19	FBB10003-FXXS3XX3W5M	FBB10003	REV 2	
	X.X±.008(0.20)	.X'±2'						CHECKED BY
SCALE 5:1	X.XX±.006(0.15)	.XX'±1'	ZOEY	14/AUG/19	TITLE Board to Board Pitch 1.0mm 180° Vertical (SMT)		THIS DRAWING CONTAINS INFORMATION THAT IS PROPRIETARY TO TXGA INDUSTRIAL ELECTRONICS(S.Z)CO.,LTD AND SHOULD NOT BE USED WITHOUT WRITTEN PERMISSION	
	X.XXX±.004(0.10)	.XXX'±0.5'			DRAWN BY	DATE		

1 2 3 4 5 6 7 8

REV	LOCATIONS	DESCRIPTION	DATE	REVISER	APPD

A

A

B

B

C

C

D

D



E

E

F

F

Circuits (n)	Part No.	Dimensions(in/mm)							
		A	B	C	D	E	F	K Δ	G
21	FBB10003-F21S3XX3W5M	.567(14.40)	.354(9.00)	.394(10.00)	.634(16.10)	.516(13.10)	.197(5.00)	.031(0.80)	.072(1.84 \pm ₀ ^{0.10})
31	FBB10003-F31S3XX3W5M	.764(19.40)	.551(14.00)	.591(15.00)	.831(21.10)	.713(18.10)	.394(10.00)		.118(3.00 \pm ₀ ^{0.10})
41	FBB10003-F41S3XX3W5M	.961(24.40)	.748(19.00)	.787(20.00)	1.028(26.10)	.909(23.10)	.591(15.00)		
51	FBB10003-F51S3XX3W5M	1.157(29.40)	.945(24.00)	.984(25.00)	1.224(31.10)	1.106(28.10)	.787(20.00)		

 THIRD ANGLE PROJECTION	GENERAL TOLERANCES (UNLESS SPECIFIED)		APPROVE BY FRANK	DATE 14/AUG/19	PART NO. FBB10003-FXXS3XX3W5M	ITEM NO. FBB10003	 Leader Of Industry		
	DESIGN UNITS Inch (metric)	X. \pm .012(0.30) X.X \pm .008(0.20)	X. \pm 5' .X \pm 2'	CHECKED BY CHERRY	DATE 14/AUG/19	TITLE Board to Board Pitch 1.0mm 180° Vertical (SMT)		REV 2	SHEET NO. 2/2
	SCALE 5:1	SIZE A4	X.XX \pm .006(0.15) X.XXX \pm .004(0.10)	.XX \pm 1' .XXX \pm 0.5'	DRAWN BY ZOEY	DATE 14/AUG/19		THIS DRAWING CONTAINS INFORMATION THAT IS PROPRIETARY TO TXGA INDUSTRIAL ELECTRONICS(S.Z)CO.,LTD AND SHOULD NOT BE USED WITHOUT WRITTEN PERMISSION	

1 2 3 4 5 6 7 8