

1 2 3 4 5 6 7 8

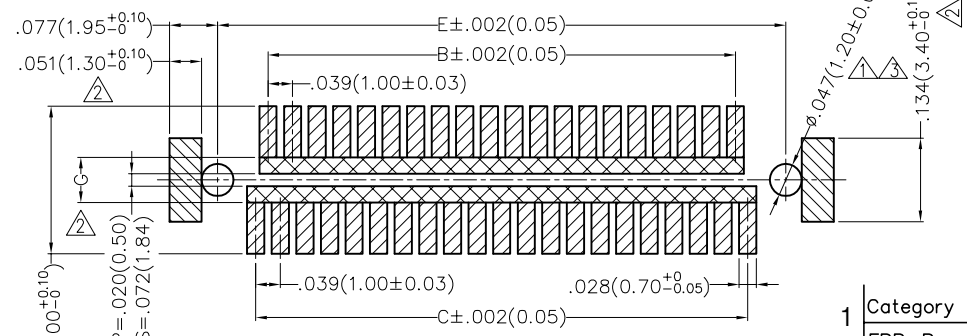
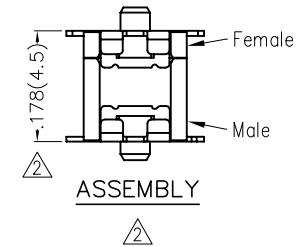
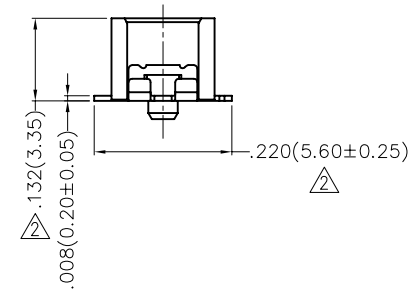
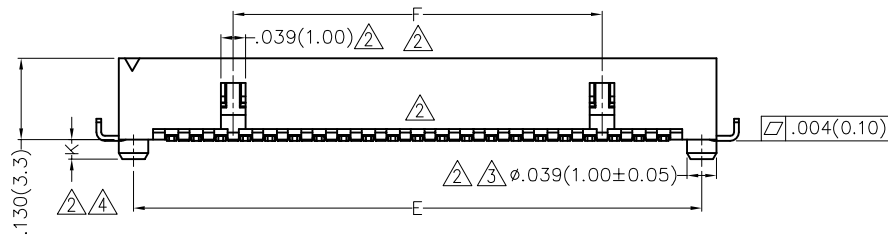
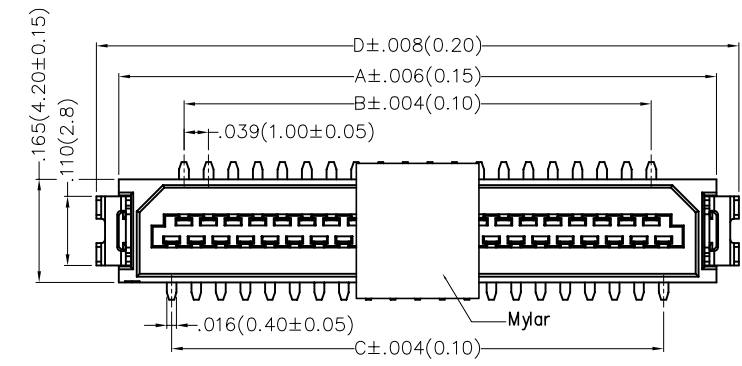
REV	LOCATIONS	DESCRIPTION	DATE	REVISER	APPD
1	①	Change PCB opening size	2020/01/16	ZOEY	CHERRY
2	②	Change the structure and size	31/AUG/20	KATE	CHERRY
3	③	Change size	12/MAY/22	MATT	CHERRY
4	④	Positioning column size change	22/NOV/24	MATT	LEO

Electrical

Current Rating: 0.5A AC(rms)/DC
 Voltage Rating: 50V AC(rms)/DC
 Contact Resistance: 50 mΩ Max
 Insulation Resistance: 500 MΩ MIN
 Withstanding Voltage: 250V AC r.m.s
 Temperature Range-Operating: -45°C~+125°C

Material and Plating

Housing: LCP (UL94V-0)
 Contact Pin: Phosphor Bronze
 Plating: Selective gold on contact area,
 tin on tail



Recommended P.C.B Layout(Top Side)
 PCB Board Tolerance: ±.001(0.05)

Ordering Information

FBB 100 03 - M XX S 3 XX 3 W5 M
 1 2 3 4 5 6 7 8 9 10 11

1 Category FBB-Board To Board	2 Series Number 100-Pitch1.0mm	3 Distinction No. 03	4 Type M-Male	5 Circuits XX	6 Entry Angle S-180° Vertical
7 Plating 3-Selective gold in contact area, tin on tail	8 Thickness of Plating 01-1μ" 05-5μ" Custom plate available	9 Material-Resin 3-LCP	10 Color-Resin W5-Natural	11 Packaging M-Reel	

Note 1: If the pattern is included in the shaded area and not treated with resist, it could touch the connector contact.

Note 2 : Please refer to each product size pattern for the universal size on the above patterns (A, B, C, D...).

THIRD ANGLE PROJECTION	GENERAL TOLERANCES (UNLESS SPECIFIED)		APPROVE BY FRANK	DATE 14/AUG/19	PART NO. FBB10003-MXXS3XX3W5M	ITEM NO. FBB10003	 Leader Of Industry
	DESIGN UNITS Inch (metric)	X.±.012(0.30) X.X±.008(0.20) X.XX±.006(0.15) X.XXX±.004(0.10)	X'±5' .X'±2' .XX'±1' .XXX'±0.5'	CHECKED BY CHERRY	DATE 14/AUG/19	TITLE Board to Board Pitch 1.0mm 180° Vertical (SMT)	
SCALE 5:1	SIZE A4		DRAWN BY ZOEY	DATE 14/AUG/19	THIS DRAWING CONTAINS INFORMATION THAT IS PROPRIETARY TO TXGA INDUSTRIAL ELECTRONICS(S.Z)CO.,LTD AND SHOULD NOT BE USED WITHOUT WRITTEN PERMISSION		

1 2 3 4 5 6 7 8

1 2 3 4 5 6 7 8

REV	LOCATIONS	DESCRIPTION	DATE	REVISER	APPD

A

A

B

B

C

C

Circuits (n)	Part No.	Dimensions(in/mm)							K/A	G
		A	B	C	D	E	F	G		
21	FBB10003-M21S3XX3W5M	.563(14.30)	.354(9.00)	.394(10.00)	.634(16.10)	.516(13.10)	.197(5.00)	.031(0.80)	.072(1.84 \pm ₀ ^{0.10})	
31	FBB10003-M31S3XX3W5M	.760(19.30)	.551(14.00)	.591(15.00)	.831(21.10)	.713(18.10)	.394(10.00)		.118(3.00 \pm ₀ ^{0.10})	
41	FBB10003-M41S3XX3W5M	.957(24.30)	.748(19.00)	.787(20.00)	1.028(26.10)	.909(23.10)	.591(15.00)			
51	FBB10003-M51S3XX3W5M	1.154(29.30)	.945(24.00)	.984(25.00)	1.224(31.10)	1.106(28.10)	.787(20.00)			

D

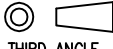

D

E

E

F

F

 THIRD ANGLE PROJECTION	GENERAL TOLERANCES (UNLESS SPECIFIED)		APPROVE BY	DATE	PART NO.	ITEM NO.	 Leader Of Industry
	X.±.012(0.30)	X.*±5*	FRANK	14/AUG/19	FBB10003-MXXS3XX3W5M	FBB10003	
DESIGN UNITS Inch (metric)	X.X±.008(0.20)	.X*±2*	CHECKED BY	DATE	TITLE		Board to Board Pitch 1.0mm 180° Vertical (SMT)
	X.XX±.006(0.15)	.XX*±1*	CHERRY	14/AUG/19	REV 4 SHEET NO. 1/2		
SCALE	SIZE	X.XXX±.004(0.10)	.XXX*±0.5*	DRAWN BY	DATE	THIS DRAWING CONTAINS INFORMATION THAT IS PROPRIETARY TO TXGA INDUSTRIAL ELECTRONICS(S.Z)CO.,LTD AND SHOULD NOT BE USED WITHOUT WRITTEN PERMISSION	
5:1	A4			ZOEY	14/AUG/19		

1 2 3 4 5 6 7 8