

REV	LOCATIONS	DESCRIPTION	DATE	REVISER	APPD
1	△	Add height series	31/MAY/22	MATT	KATE

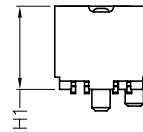
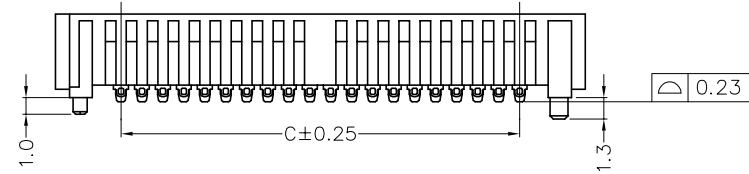
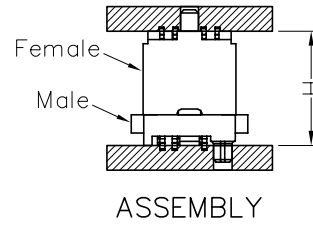
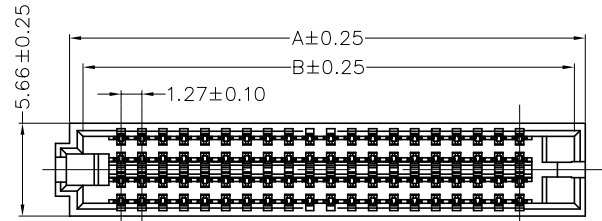
SPECIFICATIONS

Electrical

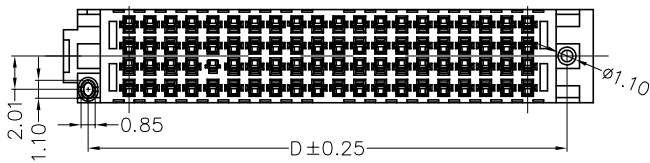
Current Rating: 1.0A AC(rms)/DC
Voltage Rating: 240V AC(rms)/DC
Temperature Range—Operating: -55°C~+125°C

Material

Housing: Thermoplastic (UL 94V-0), Color: Black
Contacts: Copper alloy/ Gold flash on contact area and tin plated on tails area



Height H Dimensions(mm)	Female H1 Dimensions(mm)	Male H2 Dimensions(mm)	Male H3 Dimensions(mm)	Note
7.00	5.05	4.72	5.61	
8.50	5.05	6.22	7.11	Only 40, 160Circuits
8.50	6.55	4.72	5.61	Only 40, 160Circuits
10.00	6.55	6.22	7.11	Only 40, 160Circuits

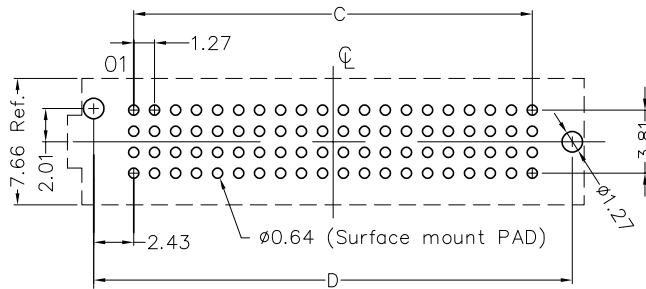


Ordering Information

FBB 127 01 — F XXX S 3 00 3 BK M HXX
1 2 3 4 5 6 7 8 9 10 11 12

1 Category: FBB—Board to Board
2 Series Number: 127—Pitch1.27mm
3 Distinction No.: 01
4 Type: F—Female
5 Circuits: XXX
6 Entry Angle: S—180° Vertical

7 Plating: 3—Selective gold plated on contact area and bright tin plated on tails area
8 Thickness of Plating: 00—Gold flash
9 Material—Resin: 3—LCP
10 Color—Resin: BK—Black
11 Packaging: M—Reel
12 Female height: H51—H1=5.05mm, H66—H1=6.55mm



Recommended P.C.Board Layout
General tolerances: ±0.05

 THIRD ANGLE PROJECTION	GENERAL TOLERANCES (UNLESS SPECIFIED)		APPROVE BY FRANK	DATE 30/JUN/21	PART NO. FBB12701-FXXXS3003BKM HXX	ITEM NO. FBB12701	 Building Technology Cornerstone
	X. ±0.30	X.' ±5°	CHECKED BY CHERRY	DATE 30/JUN/21	TITLE Board to Board Pitch 1.27mm 180° Vertical (SMT)		
DESIGN UNITS Metric	X.X ±0.20	X.X' ±2°	DRAWN BY KATE	DATE 30/JUN/21	THIS DRAWING CONTAINS INFORMATION THAT IS PROPRIETARY TO TXGA INDUSTRIAL ELECTRONICS(S.Z)CO.,LTD AND SHOULD NOT BE USED WITHOUT WRITTEN PERMISSION		
SCALE 1:1	SIZE A4	X.XX ±0.15	X.XX' ±1°				
		X.XXX ±0.10	X.XXX' ±0.5°				

1 2 3 4 5 6 7 8

REV	LOCATIONS	DESCRIPTION	DATE	REVISER	APPD

A

B

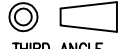

C

D

E

F

Circuits (n)	Part No.	Dimensions(mm)			
		A	B	C	D
4x10	FBB12701-F040S3003BKMHXX	18.52	17.02	11.43	16.28
4x15	FBB12701-F060S3003BKMHXX	24.87	23.37	17.78	22.63
4x19	FBB12701-F076S3003BKMHXX	29.95	28.45	22.86	27.71
4x20	FBB12701-F080S3003BKMHXX	31.22	29.72	24.13	28.98
4x25	FBB12701-F100S3003BKMHXX	37.57	36.07	30.48	35.33
4x30	FBB12701-F120S3003BKMHXX	43.92	42.42	36.83	41.68
4x40	FBB12701-F160S3003BKMHXX	56.62	55.12	49.53	54.38
4x50	FBB12701-F200S3003BKMHXX	69.32	67.82	62.23	67.08

 THIRD ANGLE PROJECTION	GENERAL TOLERANCES (UNLESS SPECIFIED)		APPROVE BY FRANK	DATE 30/JUN/21	PART NO. FBB12701-FXXXS3003BKMHXX	ITEM NO. FBB12701	 Building Technology Cornerstone		
	X. ±0.30	X.* ±5°	CHECKED BY CHERRY	DATE 30/JUN/21	TITLE Board to Board Pitch 1.27mm 180° Vertical (SMT)			REV 1	SHEET NO. 2/2
	X.X ±0.20	X.X* ±2°	DRAWN BY KATE	DATE 30/JUN/21	THIS DRAWING CONTAINS INFORMATION THAT IS PROPRIETARY TO TXGA INDUSTRIAL ELECTRONICS(S.Z)CO.,LTD AND SHOULD NOT BE USED WITHOUT WRITTEN PERMISSION				
	SCALE 1:1	SIZE A4	X.XX ±0.15	X.XX* ±1°	X.XXX ±0.10	X.XXX* ±0.5°			

1 2 3 4 5 6 7 8