

REV	LOCATIONS	DESCRIPTION	DATE	REVISER	APPD

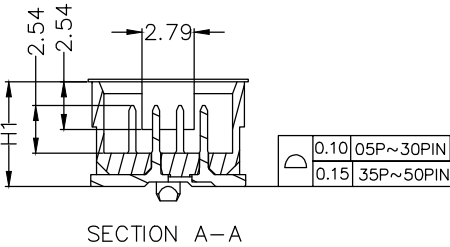
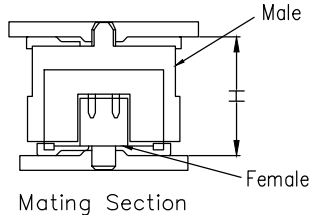
SPECIFICATIONS

Electrical

Current Rating: 2.0A AC(rms)/DC
Voltage Rating: 100V AC(rms)/DC
Contact Resistance: 30 mΩ Max
Insulation Resistance: 300 MΩ Min
Withstanding Voltage: 500V AC r.m.s
Operating Temperature: -55°C~+125°C

Material and plating

Housing: LCP (UL 94V-0)
Contacts: Copper Alloy/Gold plated

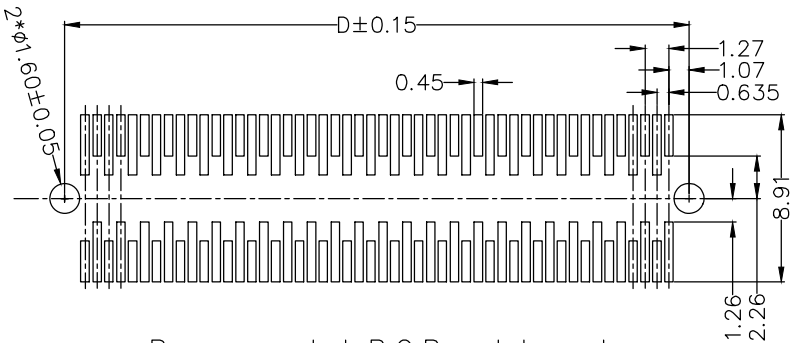
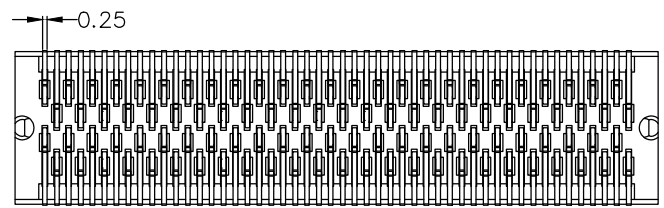
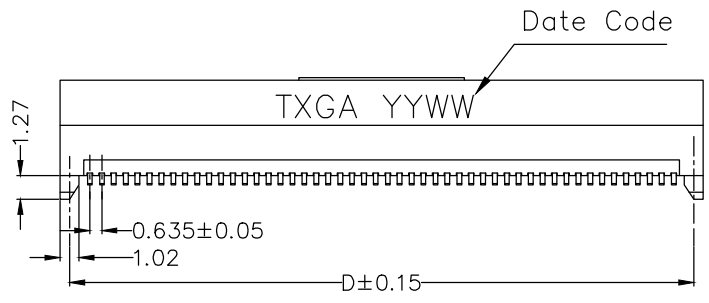
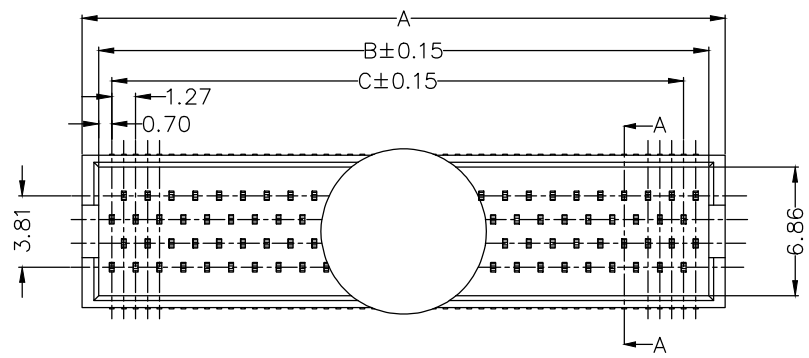


Dimensions(mm)		
Height H	Male H1	Female H2
6.35	5.59	4.60
8.00	7.23	4.60
10.00	9.23	4.60
12.00	11.23	4.60

Ordering Information

FBB 127 09 — M XX S 1 XX 3 BK M HXX
1 2 3 4 5 6 7 8 9 10 11 12

1 Category FBB-Board to Board	2 Series Number 127-Pitch 1.27mm	3 Distinction No. 09	4 Type M-Male	5 Circuits XX	6 Entry Angle S-180° Vertical
7 Plating 1-Gold plated	8 Thickness of Plating 03-03u" 10-10u"	9 Material-Resin 3-LCP	10 Color-Resin BK-Black	11 Packaging M-Reel	12 Male height H56-H1=5.59mm H72-H1=7.23mm H92-H1=9.23mm HB2-H1=11.23mm



Recommended P.C.Board Layout
General tolerances: ±0.05

THIRD ANGLE PROJECTION	GENERAL TOLERANCES (UNLESS SPECIFIED)		APPROVE BY LEO	DATE 30/JAN/23	PART NO. FBB12709-MXXS1XX3BKMHXX	ITEM NO. FBB12709	
	DESIGN UNITS mm	X. ±0.30 X.X ±0.20 X.XX ±0.15 X.XXX ±0.10	X.' ±5° X.X' ±2° X.XX' ±1° X.XXX' ±0.5°	CHECKED BY GISELLE	DATE 30/JAN/23	TITLE Board to Board Pitch 1.27mm 180° Vertical (SMT)	
SCALE 1:1	SIZE A4	DRAWN BY Hejianpeng		DATE 30/JAN/23	THIS DRAWING CONTAINS INFORMATION THAT IS PROPRIETARY TO TXGA INDUSTRIAL ELECTRONICS(S,Z)CO.,LTD AND SHOULD NOT BE USED WITHOUT WRITTEN PERMISSION		REV 0 SHEET NO. 1/3

1 2 3 4 5 6 7 8

REV	LOCATIONS	DESCRIPTION	DATE	REVISER	APPD

A

A

B

B

C

C

D

D

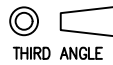

E

E

F

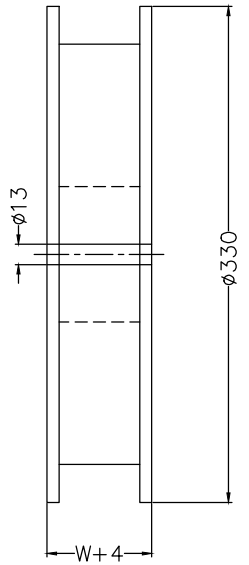
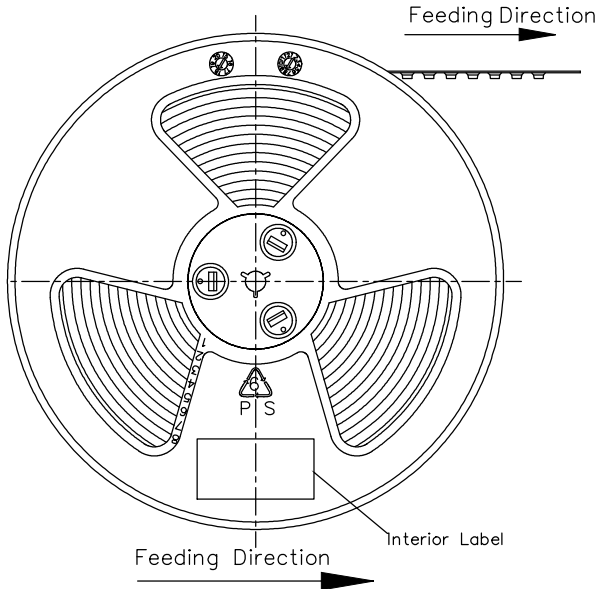
F

Circuits (n)	Part NO.	Dimensions			
		A	B	C	D
4X5	FBB12709-M20S1XX3BKMHXX	8.89	7.11	5.08	7.87
4X10	FBB12709-M40S1XX3BKMHXX	15.24	13.46	11.43	14.22
4X15	FBB12709-M60S1XX3BKMHXX	21.59	19.81	17.78	20.57
4X20	FBB12709-M80S1XX3BKMHXX	27.94	26.16	24.13	26.92
4X25	FBB12709-M100S1XX3BKMHXX	34.29	32.51	30.48	33.27
4X30	FBB12709-M120S1XX3BKMHXX	40.64	38.86	36.83	39.62
4X35	FBB12709-M140S1XX3BKMHXX	46.99	45.21	43.18	45.97
4X40	FBB12709-M160S1XX3BKMHXX	53.34	51.56	49.53	52.32
4X45	FBB12709-M180S1XX3BKMHXX	59.69	57.91	55.88	58.67
4X50	FBB12709-M200S1XX3BKMHXX	66.04	64.26	62.23	65.02

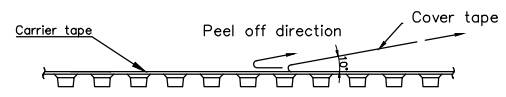
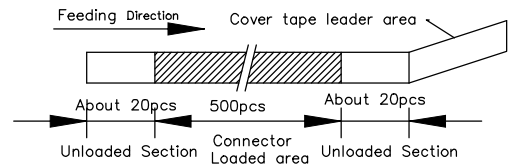
 THIRD ANGLE PROJECTION	GENERAL TOLERANCES (UNLESS SPECIFIED)		APPROVE BY LEO	DATE 30/JAN/23	PART NO. FBB12709-MXXS1XX3BKMHXX	ITEM NO. FBB12709	 TXGA Building Technology Cornerstone
	DESIGN UNITS mm	X. ±0.30	X.* ±5°	CHECKED BY GISELLE	DATE 30/JAN/23	TITLE Board to Board Pitch 1.27mm 180° Vertical (SMT)	
SCALE 1:1	SIZE A4	X.XX ±0.15	X.XX* ±1°	DRAWN BY Hejianpeng	DATE 30/JAN/23	THIS DRAWING CONTAINS INFORMATION THAT IS PROPRIETARY TO TXGA INDUSTRIAL ELECTRONICS(S.Z)CO.,LTD AND SHOULD NOT BE USED WITHOUT WRITTEN PERMISSION	
		X.XXX ±0.10	X.XXX* ±0.5°			REV 0	SHEET NO. 2/3

1 2 3 4 5 6 7 8

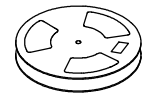
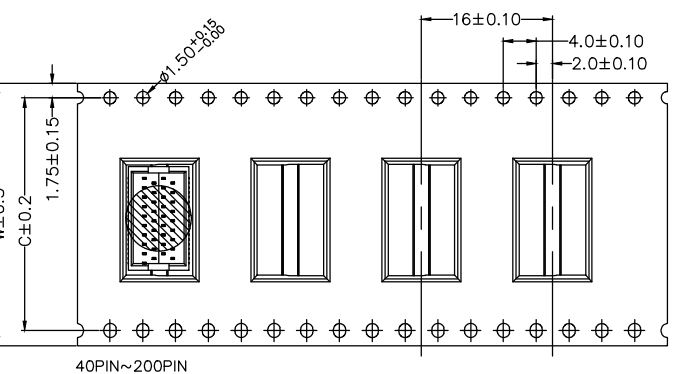
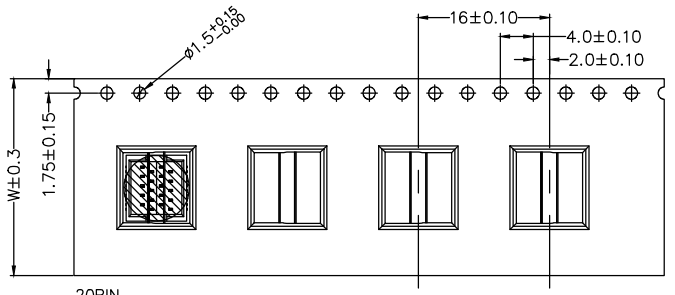
REV	LOCATIONS	DESCRIPTION	DATE	REVISER	APPD



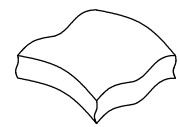
- Note:
- 1.10 sprocket hole cumulative tolerance ± 0.2
 2. Carrier camber is within 1.0mm in 250mm
 3. Material: Clear conductive polystyrene Alloy 100% recyclable
 4. All dimensions meet EIA-481-3 requirements
 5. Peel off force of cover tape & carrier tape: 20g~130g (0.2N~1.3N)
 6. Component load per 13" reel: 500 pcs



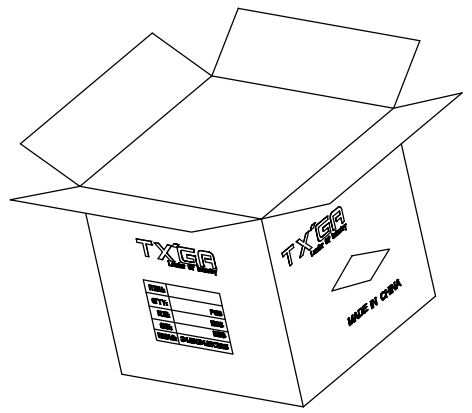
Circuits (n)	Dimensions	
	W	C
20	24	
40	32	28.4
60-80	44	40.4
100-120	56	52.4
140-160	72	64.4
180-200	88	76.4



PE Bag



Drying agent/pcs



<p>THIRD ANGLE PROJECTION</p>	GENERAL TOLERANCES (UNLESS SPECIFIED)		APPROVE BY LEO	DATE 30/JAN/23	PART NO. FBB12709-MXXS1XX3BKMHXX	ITEM NO. FBB12709	<p>Building Technology Cornerstone</p>
	X. ± 0.30	X.' $\pm 5^\circ$	CHECKED BY GISELLE	DATE 30/JAN/23	TITLE Board to Board Pitch 1.27mm 180° Vertical (SMT)		
DESIGN UNITS mm	X.X ± 0.20	X.X' $\pm 2^\circ$	DRAWN BY Hejianpeng	DATE 30/JAN/23	THIS DRAWING CONTAINS INFORMATION THAT IS PROPRIETARY TO TXGA INDUSTRIAL ELECTRONICS(S,Z)CO.,LTD AND SHOULD NOT BE USED WITHOUT WRITTEN PERMISSION		
SCALE 1:1	X.XX ± 0.15	X.XX' $\pm 1^\circ$					
SIZE A4	X.XXX ± 0.10	X.XXX' $\pm 0.5^\circ$					