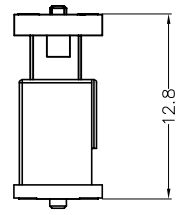
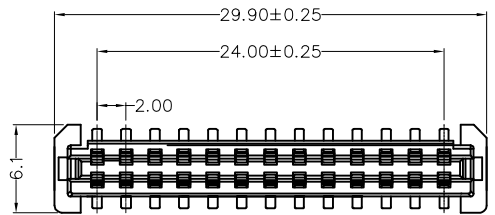


REV	LOCATIONS	DESCRIPTION	DATE	REVISER	APPD

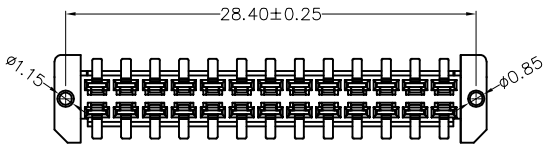
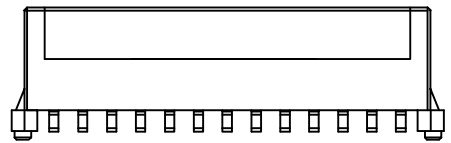
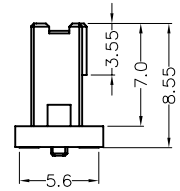
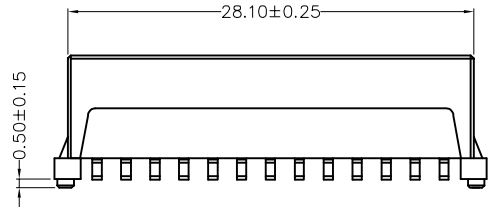
SPECIFICATIONS

Electrical
 Current Rating: 1.5A AC(rms)/DC
 Voltage Rating: 100V AC(rms)/DC
 Contact Resistance: 30 mΩ Max.
 Insulation Resistance: 1000 MΩ Min.
 Withstanding Voltage: 500V AC r.m.s
 Temperature Range-Operating: -40°C~+105°C

Material and Plating
 Housing: LCP (UL 94V-0)
 Contacts: Phosphor Bronze/ Selective gold in contact area, matte tin on tail
 Mates With: FBB20001-M Series



Assembly



Recommended P.C.Board Layout
 General Tolerances: ±0.05mm

Ordering Information

FBB 200 01 — F 26 S 3 XX 3 K6 M H85
 1 2 3 4 5 6 7 8 9 10 11 12

1 Category FBB-Board to Board	2 Series Number 200-Pitch2.00mm	3 Distinction No. 01	4 Type F-Female	5 Circuits 26	6 Entry Angle S-180° Vertical
7 Plating 3-Selective gold in contact area, tin on tail	8 Thickness of Plating 01-1μ" 05-5μ" Custom plate available	9 Material-Resin 3-LCP	10 Color-Resin K6-Black	11 Packaging M-Reel	12 Female Height H85-8.55mm

<p>THIRD ANGLE PROJECTION</p>	<p>GENERAL TOLERANCES (UNLESS SPECIFIED)</p>		<p>APPROVE BY LEO</p>	<p>DATE 02/AUG/24</p>	<p>PART NO. FBB20001-F26S3XX3K6MHXX</p>	<p>ITEM NO. FBB20003</p>	<p>Building Technology Cornerstone</p>
	<p>DESIGN UNITS METRIC</p>	<p>X. ±0.30</p>	<p>X.* ±5°</p>	<p>CHECKED BY GISELLE</p>	<p>DATE 02/AUG/24</p>	<p>TITLE Board to Board Pitch 2mm 180° Vertical (SMT)</p>	
<p>SCALE 5:1</p>	<p>SIZE A4</p>	<p>X.XX ±0.15</p>	<p>X.XX* ±1°</p>	<p>DRAWN BY MATT</p>	<p>DATE 02/AUG/24</p>	<p>THIS DRAWING CONTAINS INFORMATION THAT IS PROPRIETARY TO TXGA INDUSTRIAL ELECTRONICS(S.Z)CO.,LTD AND SHOULD NOT BE USED WITHOUT WRITTEN PERMISSION</p>	