

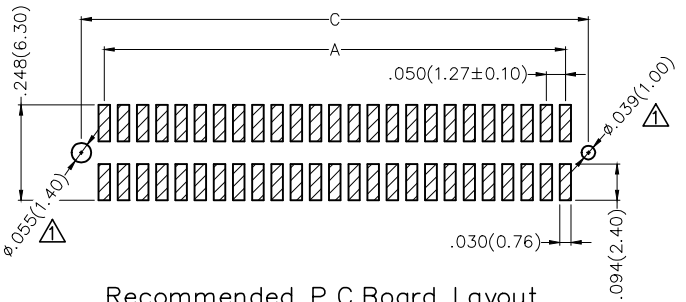
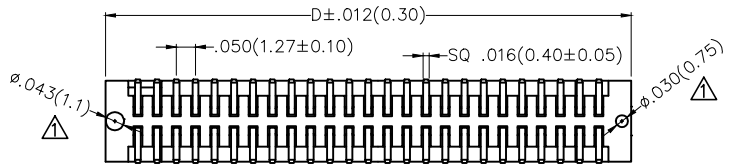
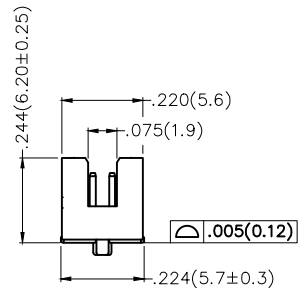
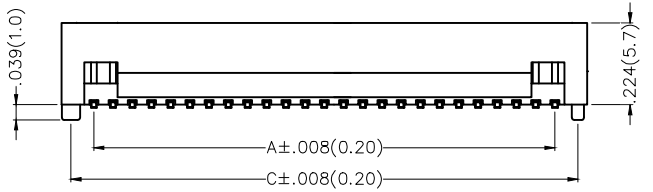
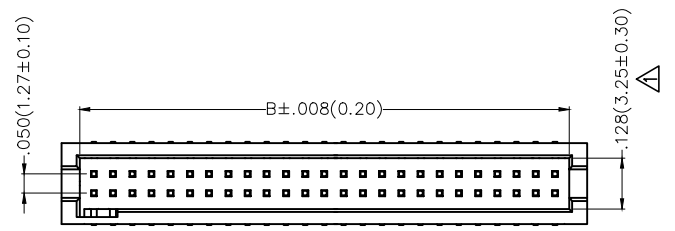
REV	LOCATIONS	DESCRIPTION	DATE	REVISER	APPD
1	△	Size changes	08/MAY/21	KATE	CHERRY

Electrical

Current Rating: 1.0A AC(rms)/DC
Voltage Rating: 250V AC(rms)/DC
Contact Resistance: 20 mΩ Max
Insulation Resistance: 1000 MΩ MIN
Withstanding Voltage: 500V AC r.m.s
Temperature Range-Operating: -40°C~+85°C

Material and Plating

Housing: Polyester (UL94V-0)
Contact Pin: Brass
Plating: Gold plated/ Selective gold plated on contact area and 200μ" Min. matte tin plated on tails area



Recommended P.C.Board Layout

Ordering Information



FBH 127 14 — D XX S X XX X K6 X
1 2 3 4 5 6 7 8 9 10 11

1	Category	2	Series Number	3	Distinction No.	4	Row Option	5	Circuits	6	Entry Angle
	FBH-Box Header		127-Pitch1.27mm		14		D-Double Row		XX		S-180° Vertical
7	Plating	8	Thickness of Plating	9	Material-Resin	10	Color-Resin	11	Packaging		
	1-Gold Plated 7-Selective gold plated on contact area and matte tin plated on tails area		00-Gold Flash 03-3μ" Custom plate available		3-LCP 4-PA9T		K6-Black		L-Tube M-Reel		

 THIRD ANGLE PROJECTION	GENERAL TOLERANCES (UNLESS SPECIFIED)		APPROVE BY	DATE	PART NO.	ITEM NO.	 Building Technology Cornerstone
	X.±.012(0.30)	X.±5°	FRANK	18/JUN/13	FBH12714-DXXSXXXK6X	FBH12714	
DESIGN UNITS Inch (metric)	X.X±.008(0.20)	.X±2°	CHECKED BY	DATE	TITLE		
SCALE	X.XX±.006(0.15)	.XX±1°	CHERRY	18/JUN/13	Wire to Board(Box Header) Pitch 1.27mm 180° Vertical(SMT)		REV 1 SHEET NO. 1/2
SIZE	X.XXX±.004(0.10)	.XXX±0.5°	DRAWN BY	DATE	THIS DRAWING CONTAINS INFORMATION THAT IS PROPRIETARY TO TXGA INDUSTRIAL ELECTRONICS(S.Z)CO.,LTD AND SHOULD NOT BE USED WITHOUT WRITTEN PERMISSION		
5:1			KATE	18/JUN/13			

REV	LOCATIONS	DESCRIPTION	DATE	REVISER	APPD

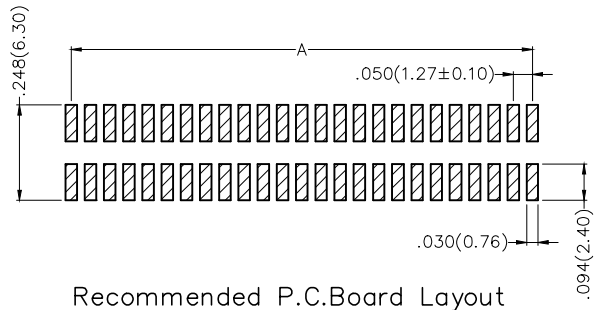
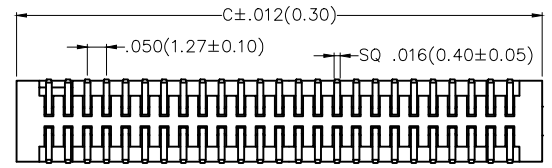
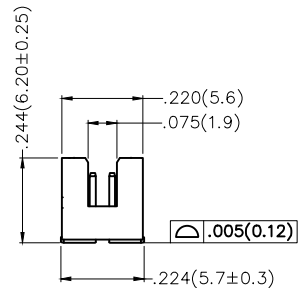
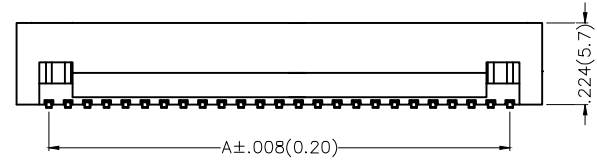
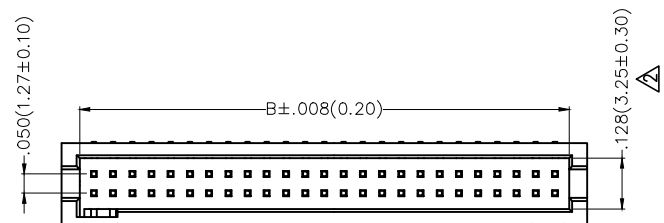
Circuits (n)	Part No.	Dimensions(in/mm)				Circuits (n)	Part No.	Dimensions(in/mm)			
		A	B	C	D			A	B	C	D
10	FBH12714-D10SXXXXK6X	.200(5.08)	.274(6.95)	.320(8.12)	.368(9.35)	56	FBH12714-D56SXXXXK6X	1.350(34.29)	1.424(36.16)	1.470(37.33)	1.518(38.56)
12	FBH12714-D12SXXXXK6X	.250(6.35)	.324(8.22)	.370(9.39)	.418(10.62)	58	FBH12714-D58SXXXXK6X	1.400(35.56)	1.474(37.43)	1.520(38.60)	1.568(39.83)
14	FBH12714-D14SXXXXK6X	.300(7.62)	.374(9.49)	.420(10.66)	.468(11.89)	60	FBH12714-D60SXXXXK6X	1.450(36.83)	1.524(38.70)	1.570(39.87)	1.618(41.10)
16	FBH12714-D16SXXXXK6X	.350(8.89)	.424(10.76)	.470(11.93)	.518(13.16)	62	FBH12714-D62SXXXXK6X	1.500(38.10)	1.574(39.97)	1.620(41.14)	1.668(42.37)
18	FBH12714-D18SXXXXK6X	.400(10.16)	.474(12.03)	.520(13.20)	.568(14.43)	64	FBH12714-D64SXXXXK6X	1.550(39.37)	1.624(41.24)	1.670(42.41)	1.718(43.64)
20	FBH12714-D20SXXXXK6X	.450(11.43)	.524(13.30)	.570(14.47)	.618(15.70)	66	FBH12714-D66SXXXXK6X	1.600(40.64)	1.674(42.51)	1.720(43.68)	1.768(44.91)
22	FBH12714-D22SXXXXK6X	.500(12.70)	.574(14.57)	.620(15.74)	.668(16.97)	68	FBH12714-D68SXXXXK6X	1.650(41.91)	1.724(43.78)	1.770(44.95)	1.818(46.18)
24	FBH12714-D24SXXXXK6X	.550(13.97)	.624(15.84)	.670(17.01)	.718(18.24)	70	FBH12714-D70SXXXXK6X	1.700(43.18)	1.774(45.05)	1.820(46.22)	1.868(47.45)
26	FBH12714-D26SXXXXK6X	.600(15.24)	.674(17.11)	.720(18.28)	.768(19.51)	72	FBH12714-D72SXXXXK6X	1.750(44.45)	1.824(46.32)	1.870(47.49)	1.918(48.72)
28	FBH12714-D28SXXXXK6X	.650(16.51)	.724(18.38)	.770(19.55)	.818(20.78)	74	FBH12714-D74SXXXXK6X	1.800(45.72)	1.874(47.59)	1.920(48.76)	1.968(49.99)
30	FBH12714-D30SXXXXK6X	.700(17.78)	.774(19.65)	.820(20.82)	.868(22.05)	76	FBH12714-D76SXXXXK6X	1.850(46.99)	1.924(48.86)	1.970(50.03)	2.018(51.26)
32	FBH12714-D32SXXXXK6X	.750(19.05)	.824(20.92)	.870(22.09)	.918(23.32)	78	FBH12714-D78SXXXXK6X	1.900(48.26)	1.974(50.13)	2.020(51.30)	2.068(52.53)
34	FBH12714-D34SXXXXK6X	.800(20.32)	.874(22.19)	.920(23.36)	.968(24.59)	80	FBH12714-D80SXXXXK6X	1.950(49.53)	2.024(51.40)	2.070(52.57)	2.118(53.80)
36	FBH12714-D36SXXXXK6X	.850(21.59)	.924(23.46)	.970(24.63)	1.018(25.86)	82	FBH12714-D82SXXXXK6X	2.000(50.80)	2.074(52.67)	2.120(53.84)	2.168(55.07)
38	FBH12714-D38SXXXXK6X	.900(22.86)	.974(24.73)	1.020(25.90)	1.068(27.13)	84	FBH12714-D84SXXXXK6X	2.050(52.07)	2.124(53.94)	2.170(55.11)	2.218(56.34)
40	FBH12714-D40SXXXXK6X	.950(24.13)	1.024(26.00)	1.070(27.17)	1.118(28.40)	86	FBH12714-D86SXXXXK6X	2.100(53.34)	2.174(55.21)	2.220(56.38)	2.268(57.61)
42	FBH12714-D42SXXXXK6X	1.000(25.40)	1.074(27.27)	1.120(28.44)	1.168(29.67)	88	FBH12714-D88SXXXXK6X	2.150(54.61)	2.224(56.48)	2.270(57.65)	2.318(58.88)
44	FBH12714-D44SXXXXK6X	1.050(26.67)	1.124(28.54)	1.170(29.71)	1.218(30.94)	90	FBH12714-D90SXXXXK6X	2.200(55.88)	2.274(57.75)	2.320(58.92)	2.368(60.15)
46	FBH12714-D46SXXXXK6X	1.100(27.94)	1.174(29.81)	1.220(30.98)	1.268(32.21)	92	FBH12714-D92SXXXXK6X	2.250(57.15)	2.324(59.02)	2.370(60.19)	2.418(61.42)
48	FBH12714-D48SXXXXK6X	1.150(29.21)	1.224(31.08)	1.270(32.25)	1.318(33.48)	94	FBH12714-D94SXXXXK6X	2.300(58.42)	2.374(60.29)	2.420(61.46)	2.468(62.69)
50	FBH12714-D50SXXXXK6X	1.200(30.48)	1.274(32.35)	1.320(33.52)	1.368(34.75)	96	FBH12714-D96SXXXXK6X	2.350(59.69)	2.424(61.56)	2.470(62.73)	2.518(63.96)
52	FBH12714-D52SXXXXK6X	1.250(31.75)	1.324(33.62)	1.370(34.79)	1.418(36.02)	98	FBH12714-D98SXXXXK6X	2.400(60.96)	2.474(62.83)	2.520(64.00)	2.568(65.23)
54	FBH12714-D54SXXXXK6X	1.300(33.02)	1.374(34.89)	1.420(36.06)	1.468(37.29)	100	FBH12714-D100SXXXXK6X	2.450(62.23)	2.524(64.10)	2.570(65.27)	2.618(66.50)

 <p>THIRD ANGLE PROJECTION</p>	GENERAL TOLERANCES (UNLESS SPECIFIED)		APPROVE BY	DATE	PART NO.	ITEM NO.	 <p>Building Technology Cornerstone</p>	
	X.±.012(0.30)	X.±5'	FRANK	18/JUN/13	FBH12714-DXXSXXXXK6X	FBH12714		
	X.X±.008(0.20)	.X'±2'	CHECKED BY	DATE	TITLE	REV 1		SHEET NO. 2/2
	X.XX±.006(0.15)	.XX'±1'	CHERRY	18/JUN/13	Wire to Board(Box Header) Pitch 1.27mm 180° Vertical(SMT)	THIS DRAWING CONTAINS INFORMATION THAT IS PROPRIETARY TO TXGA INDUSTRIAL ELECTRONICS(S.Z)CO.,LTD AND SHOULD NOT BE USED WITHOUT WRITTEN PERMISSION		
SCALE 5:1	SIZE A4	X.XXX±.004(0.10)	.XXX'±0.5'	DRAWN BY	DATE			
			KATE	18/JUN/13				

REV	LOCATIONS	DESCRIPTION	DATE	REVISER	APPD
1		Part No. : Change FBH12715 Into FBH12714A	31/AUG/15	KATE	FRANK
2		Size changes	08/MAY/21	KATE	CHERRY

Electrical
 Current Rating: 1.0A AC(rms)/DC
 Voltage Rating: 250V AC(rms)/DC
 Contact Resistance: 20 mΩ Max
 Insulation Resistance: 1000 MΩ MIN
 Withstanding Voltage: 500V AC r.m.s
 Temperature Range—Operating: -40°C~+85°C

Material and Plating
 Housing: Polyester (UL94V-0)
 Contact Pin: Brass
 Plating: Gold Plated



Ordering Information



FBH 127 14 — D XX S 1 XX 4 K6 X A
 1 2 3 4 5 6 7 8 9 10 11 12




1	Category FBH—Box Header	2	Series Number 127—Pitch1.27mm	3	Distinction No. 15	4	Row Option D—Double Row	5	Circuits XX	6	Entry Angle S—180° Vertical
7	Plating 1—Gold Plated	8	Thickness of Plating 00—Gold Flash 03—3μ"	9	Material—Resin 4—PA9T	10	Color—Resin K6—Black	11	Packaging L—Tube M—Reel	12	Type A—W/O Position

Custom plate available

	GENERAL TOLERANCES (UNLESS SPECIFIED)		APPROVE BY FRANK	DATE 18/JUN/13	PART NO. FBH12714—DXXS1XX4K6XA	ITEM NO. FBH12714A		TXGA Building Technology Cornerstone
	DESIGN UNITS Inch (metric)	X.±.012(0.30) X.X±.008(0.20) X.XX±.006(0.15) X.XXX±.004(0.10)	X.±5° .X±2° .XX±1° .XXX±0.5°	CHECKED BY CHERRY	DATE 18/JUN/13	TITLE Wire to Board(Box Header) Pitch 1.27mm 180° Vertical(SMT)		
SCALE 5:1	SIZE A4		DRAWN BY KATE	DATE 18/JUN/13	THIS DRAWING CONTAINS INFORMATION THAT IS PROPRIETARY TO TXGA INDUSTRIAL ELECTRONICS(S.Z)CO.,LTD AND SHOULD NOT BE USED WITHOUT WRITTEN PERMISSION			

REV	LOCATIONS	DESCRIPTION	DATE	REVISER	APPD

Circuits (n)	Part No. 	Dimensions(in/mm)			Circuits (n)	Part No. 	Dimensions(in/mm)		
		A	B	C			A	B	C
8	FBH12714-D08S1XX4K6XA	.150(3.81)	.223(5.68)	.318(8.08)	56	FBH12714-D56S1XX4K6XA	1.350(34.29)	1.424(36.16)	1.518(38.56)
10	FBH12714-D10S1XX4K6XA	.200(5.08)	.274(6.95)	.368(9.35)	58	FBH12714-D58S1XX4K6XA	1.400(35.56)	1.474(37.43)	1.568(39.83)
12	FBH12714-D12S1XX4K6XA	.250(6.35)	.324(8.22)	.418(10.62)	60	FBH12714-D60S1XX4K6XA	1.450(36.83)	1.524(38.70)	1.618(41.10)
14	FBH12714-D14S1XX4K6XA	.300(7.62)	.374(9.49)	.468(11.89)	62	FBH12714-D62S1XX4K6XA	1.500(38.10)	1.574(39.97)	1.668(42.37)
16	FBH12714-D16S1XX4K6XA	.350(8.89)	.424(10.76)	.518(13.16)	64	FBH12714-D64S1XX4K6XA	1.550(39.37)	1.624(41.24)	1.718(43.64)
18	FBH12714-D18S1XX4K6XA	.400(10.16)	.474(12.03)	.568(14.43)	66	FBH12714-D66S1XX4K6XA	1.600(40.64)	1.674(42.51)	1.768(44.91)
20	FBH12714-D20S1XX4K6XA	.450(11.43)	.524(13.30)	.618(15.70)	68	FBH12714-D68S1XX4K6XA	1.650(41.91)	1.724(43.78)	1.818(46.18)
22	FBH12714-D22S1XX4K6XA	.500(12.70)	.574(14.57)	.668(16.97)	70	FBH12714-D70S1XX4K6XA	1.700(43.18)	1.774(45.05)	1.868(47.45)
24	FBH12714-D24S1XX4K6XA	.550(13.97)	.624(15.84)	.718(18.24)	72	FBH12714-D72S1XX4K6XA	1.750(44.45)	1.824(46.32)	1.918(48.72)
26	FBH12714-D26S1XX4K6XA	.600(15.24)	.674(17.11)	.768(19.51)	74	FBH12714-D74S1XX4K6XA	1.800(45.72)	1.874(47.59)	1.968(49.99)
28	FBH12714-D28S1XX4K6XA	.650(16.51)	.724(18.38)	.818(20.78)	76	FBH12714-D76S1XX4K6XA	1.850(46.99)	1.924(48.86)	2.018(51.26)
30	FBH12714-D30S1XX4K6XA	.700(17.78)	.774(19.65)	.868(22.05)	78	FBH12714-D78S1XX4K6XA	1.900(48.26)	1.974(50.13)	2.068(52.53)
32	FBH12714-D32S1XX4K6XA	.750(19.05)	.824(20.92)	.918(23.32)	80	FBH12714-D80S1XX4K6XA	1.950(49.53)	2.024(51.40)	2.118(53.80)
34	FBH12714-D34S1XX4K6XA	.800(20.32)	.874(22.19)	.968(24.59)	82	FBH12714-D82S1XX4K6XA	2.000(50.80)	2.074(52.67)	2.168(55.07)
36	FBH12714-D36S1XX4K6XA	.850(21.59)	.924(23.46)	1.018(25.86)	84	FBH12714-D84S1XX4K6XA	2.050(52.07)	2.124(53.94)	2.218(56.34)
38	FBH12714-D38S1XX4K6XA	.900(22.86)	.974(24.73)	1.068(27.13)	86	FBH12714-D86S1XX4K6XA	2.100(53.34)	2.174(55.21)	2.268(57.61)
40	FBH12714-D40S1XX4K6XA	.950(24.13)	1.024(26.00)	1.118(28.40)	88	FBH12714-D88S1XX4K6XA	2.150(54.61)	2.224(56.48)	2.318(58.88)
42	FBH12714-D42S1XX4K6XA	1.000(25.40)	1.074(27.27)	1.168(29.67)	90	FBH12714-D90S1XX4K6XA	2.200(55.88)	2.274(57.75)	2.368(60.15)
44	FBH12714-D44S1XX4K6XA	1.050(26.67)	1.124(28.54)	1.218(30.94)	92	FBH12714-D92S1XX4K6XA	2.250(57.15)	2.324(59.02)	2.418(61.42)
46	FBH12714-D46S1XX4K6XA	1.100(27.94)	1.174(29.81)	1.268(32.21)	94	FBH12714-D94S1XX4K6XA	2.300(58.42)	2.374(60.29)	2.468(62.69)
48	FBH12714-D48S1XX4K6XA	1.150(29.21)	1.224(31.08)	1.318(33.48)	96	FBH12714-D96S1XX4K6XA	2.350(59.69)	2.424(61.56)	2.518(63.96)
50	FBH12714-D50S1XX4K6XA	1.200(30.48)	1.274(32.35)	1.368(34.75)	98	FBH12714-D98S1XX4K6XA	2.400(60.96)	2.474(62.83)	2.568(65.23)
52	FBH12714-D52S1XX4K6XA	1.250(31.75)	1.324(33.62)	1.418(36.02)	100	FBH12714-D100S1XX4K6XA	2.450(62.23)	2.524(64.10)	2.618(66.50)
54	FBH12714-D54S1XX4K6XA	1.300(33.02)	1.374(34.89)	1.468(37.29)					

 THIRD ANGLE PROJECTION	GENERAL TOLERANCES (UNLESS SPECIFIED)		APPROVE BY FRANK	DATE 18/JUN/13	PART NO.  FBH12714-DXXS1XX4K6XA	ITEM NO. FBH12714A	 Building Technology Cornerstone
	X.±.012(0.30)	X.±5'	CHECKED BY CHERRY	DATE 18/JUN/13			
	DESIGN UNITS Inch (metric)	X.X±.008(0.20)	X.±2'	DRAWN BY KATE	DATE 18/JUN/13	THIS DRAWING CONTAINS INFORMATION THAT IS PROPRIETARY TO TXGA INDUSTRIAL ELECTRONICS(S.Z)CO.,LTD AND SHOULD NOT BE USED WITHOUT WRITTEN PERMISSION	
	SCALE 5:1	SIZE A4	X.XX±.006(0.15)	X.XX±1'	X.XXX±.004(0.10)	X.XX±0.5'	