

| REV | LOCATIONS | DESCRIPTION | DATE | REVISOR | APPD |
|-----|-----------|-------------|------|---------|------|
|     |           |             |      |         |      |

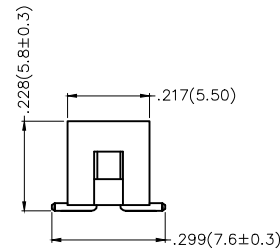
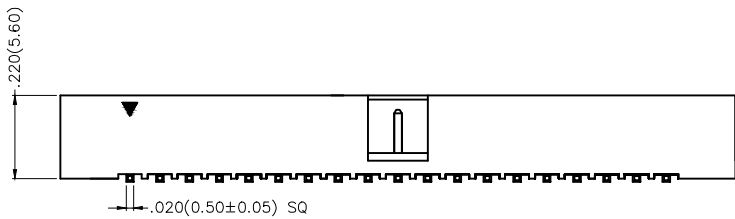
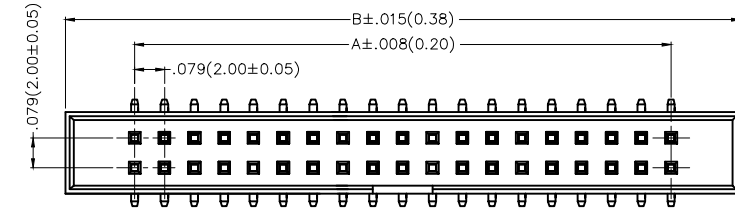
**SPECIFICATIONS**

**Electrical**

Current Rating: 2.0A AC(rms)/DC  
Voltage Rating: 250V AC(rms)/DC  
Contact Resistance: 20 mΩ Max  
Insulation Resistance: 1000 MΩ Min  
Withstanding Voltage: 500V AC r.m.s  
Temperature Range—Operating: -40°C~+105°C

**Material and Plating**

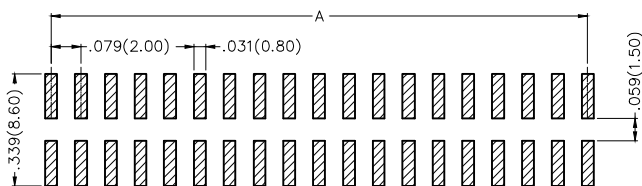
Housing: PA6T ( UL 94V-0)  
Pin: Brass/ Gold plated



**Ordering Information**

FBH 200 20 — D XX S 1 XX 4 K6 K  
1 2 3 4 5 6 7 8 9 10 11

|                                    |                                       |   |                                       |                              |
|------------------------------------|---------------------------------------|---|---------------------------------------|------------------------------|
| 1   Category<br>FBH-Box Header     | 2   Series Number<br>200-Pitch 2.00mm | 3   Distinction No.<br>20   | 4   Contact Alignment<br>D-Double Row | 5   Circuits<br>XX           |
| 6   Entry Angle<br>S-180° Vertical | 7   Plating<br>1-Gold plated          | 8   Thickness of Plating<br>00-Gold Flash<br>01-1μ"<br>Custom plate available | 9   Material-Resin<br>4-PA6T          | 10   Color-Resin<br>K6-Black |
| 11   Packaging<br>K-Tray           |                                       |   |                                       |                              |





Recommended P.C.Board Layout

|                               |                                       |                  |                      |                   |  |                      |                        |
|-------------------------------|---------------------------------------|------------------|----------------------|-------------------|--|----------------------|------------------------|
| <br>THIRD ANGLE PROJECTION    | GENERAL TOLERANCES (UNLESS SPECIFIED) |                  | APPROVE BY<br>FRANK  | DATE<br>19/JUL/13 | PART NO.<br>FBH20020-DXXS1XX4K6K   | ITEM NO.<br>FBH20020 | <br>Leader Of Industry |
|                               | X.±.012(0.30)                         | X'.±5'           | CHECKED BY<br>CHERRY | DATE<br>19/JUL/13 | TITLE<br>Wire to Board(Box Header)<br>Pitch 2mm Vertical 180°(SMT)   |                      |                        |
| DESIGN UNITS<br>Inch (metric) | X.X±.008(0.20)                        | .X'±2'           | DRAWN BY<br>KATE     | DATE<br>19/JUL/13 | THIS DRAWING CONTAINS INFORMATION THAT IS PROPRIETARY TO TXGA INDUSTRIAL ELECTRONICS(S.Z)CO.,LTD AND SHOULD NOT BE USED WITHOUT WRITTEN PERMISSION |                      |                        |
| SCALE<br>5:1                  | SIZE<br>A4                            | X.XX±.006(0.15)  |                      |                   |  |                      |                        |
|                               |                                       | X.XXX±.004(0.10) |                      |                   |  |                      |                        |

| REV | LOCATIONS | DESCRIPTION | DATE | REVISER | APPD |
|-----|-----------|-------------|------|---------|------|
|     |           |             |      |         |      |

| Circuits<br>(n) | Part No.             | Dimensions(in/mm) |              |
|-----------------|----------------------|-------------------|--------------|
|                 |                      | A                 | B            |
| 6               | FBH20020-D06S1XX4K6K | .157(4.00)        | .524(13.30)  |
| 8               | FBH20020-D08S1XX4K6K | .236(6.00)        | .602(15.30)  |
| 10              | FBH20020-D10S1XX4K6K | .315(8.00)        | .681(17.30)  |
| 14              | FBH20020-D14S1XX4K6K | .472(12.00)       | .839(21.30)  |
| 16              | FBH20020-D16S1XX4K6K | .551(14.00)       | .917(23.30)  |
| 20              | FBH20020-D20S1XX4K6K | .709(18.00)       | 1.075(27.30) |
| 24              | FBH20020-D24S1XX4K6K | .866(22.00)       | 1.232(31.30) |
| 26              | FBH20020-D26S1XX4K6K | .945(24.00)       | 1.311(33.30) |
| 28              | FBH20020-D28S1XX4K6K | 1.024(26.00)      | 1.390(35.30) |
| 30              | FBH20020-D30S1XX4K6K | 1.102(28.00)      | 1.469(37.30) |
| 34              | FBH20020-D34S1XX4K6K | 1.260(32.00)      | 1.626(41.30) |
| 36              | FBH20020-D36S1XX4K6K | 1.339(34.00)      | 1.705(43.30) |
| 40              | FBH20020-D40S1XX4K6K | 1.496(38.00)      | 1.862(47.30) |
| 44              | FBH20020-D44S1XX4K6K | 1.654(42.00)      | 2.020(51.30) |
| 50              | FBH20020-D50S1XX4K6K | 1.890(48.00)      | 2.256(57.30) |
| 64              | FBH20020-D64S1XX4K6K | 2.441(62.00)      | 2.807(71.30) |
| 68              | FBH20020-D68S1XX4K6K | 2.598(66.00)      | 2.965(75.30) |

|   |  |   |  |                      |   |  |   |       |
|---|--|---|--|----------------------|---|--|---|-------|
| <br>THIRD ANGLE<br>PROJECTION | GENERAL TOLERANCES<br>(UNLESS SPECIFIED) |   | APPROVE BY<br>FRANK  | DATE<br>19/JUL/13    | PART NO.<br>FBH20020-DXXS1XX4K6K  | ITEM NO.<br>FBH20020   | <br>Leader Of Industry |       |
|   | DESIGN UNITS<br>Inch (metric)            | $X \pm .012(0.30)$<br>$X \pm .008(0.20)$<br>$X.XX \pm .006(0.15)$<br>$X.XXX \pm .004(0.10)$ | $X' \pm 5'$<br>$X' \pm 2'$<br>$.XX \pm 1"$<br>$.XXX' \pm 0.5'$ | CHECKED BY<br>CHERRY | DATE<br>19/JUL/13   | TITLE<br>Wire to Board(Box Header)<br>Pitch 2mm Vertical 180°(SMT) |   | REV 0 |
| SCALE<br>5:1  | SIZE<br>A4                               | DRAWN BY<br>KATE  |  | DATE<br>19/JUL/13    | THIS DRAWING CONTAINS INFORMATION THAT IS PROPRIETARY TO TXGA INDUSTRIAL<br>ELECTRONICS(S.Z)CO.,LTD AND SHOULD NOT BE USED WITHOUT WRITTEN PERMISSION |  |   |       |