

REV	LOCATIONS	DESCRIPTION	DATE	REVISER	APPD
1	▲	1. Structural change 2. Add packaging specifications	22/FEB/24	MATT	LEO

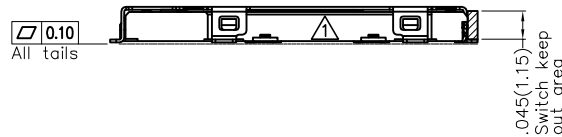
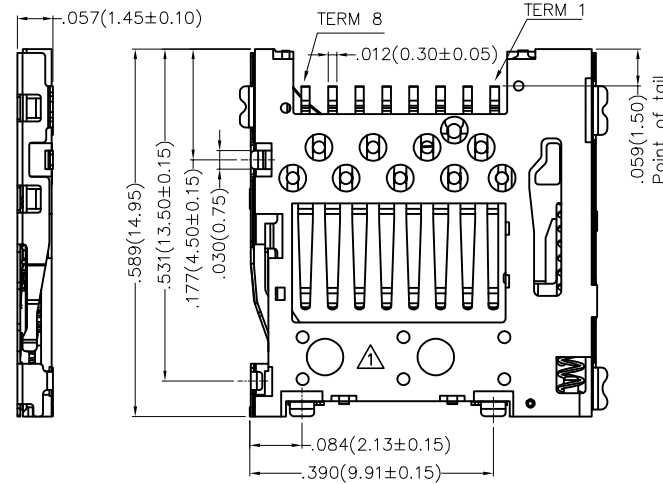
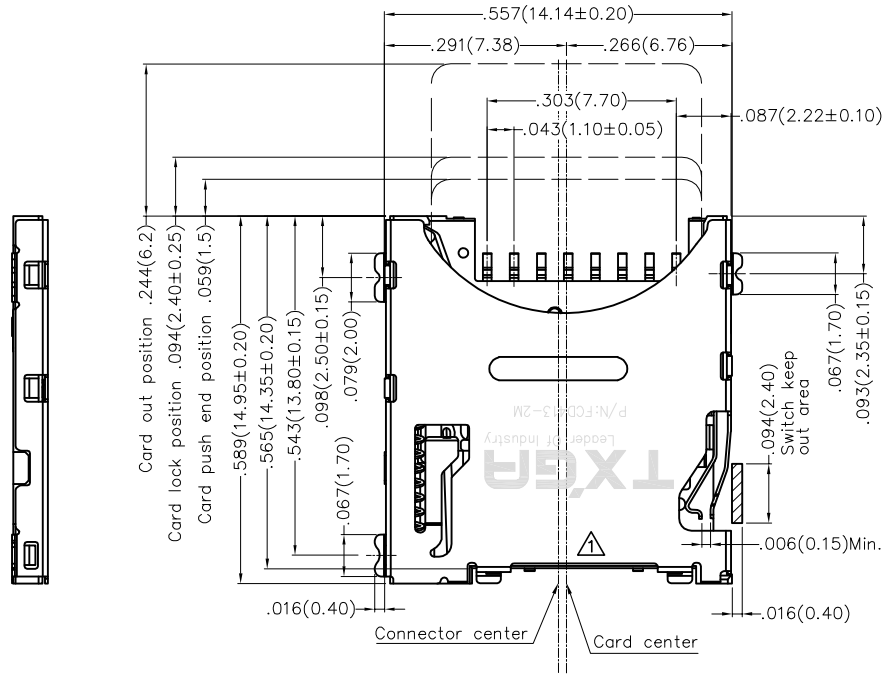
SPECIFICATIONS

Electrical

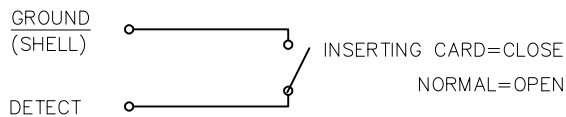
Current Rating: 0.5A AC(rms)/DC
Voltage Rating: 100V AC(rms)/DC
Contact Resistance: 100 mΩ Max
Insulation Resistance: 1000 MΩ Min
Withstanding Voltage: 500V AC r.m.s
Temperature Range-Operating: -25°C~+85°C
Durability: 5,000 Cycles


Material and Plating

Housing: Thermoplastic (UL 94V-0) Black
Terminal: Copper Alloy/ Gold plated in contact area, tin on tail
Shell: SUS/ Nickel plated overall, gold plated on solder area.

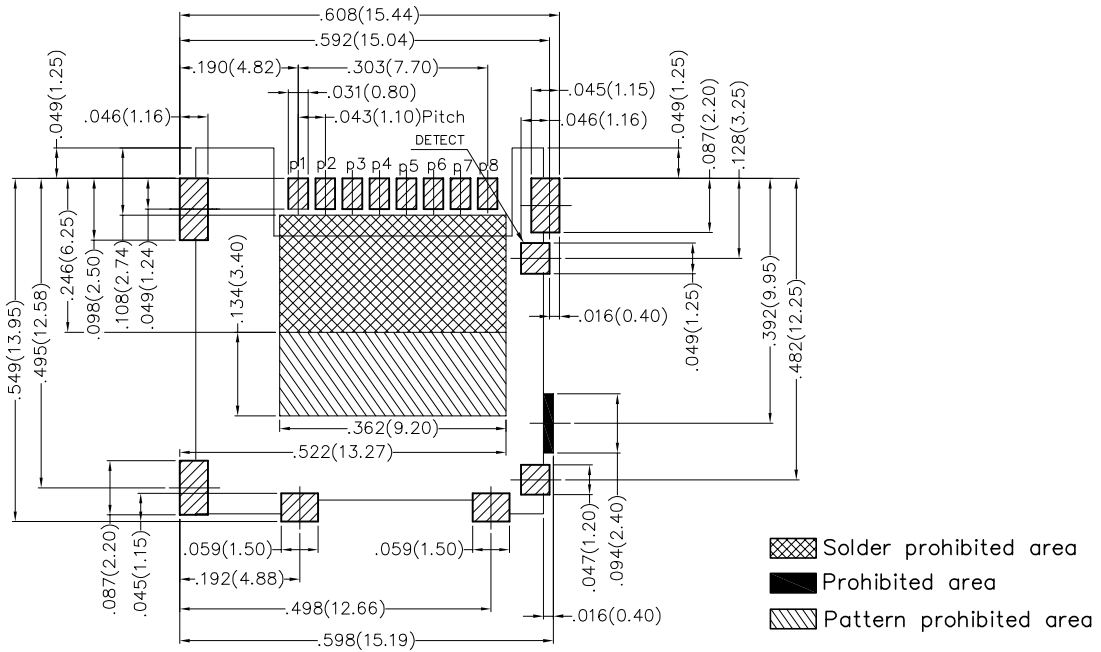


PIN No.	DESCRIPTION
TERM 1	DATA 2
TERM 2	CD/DATA 3
TERM 3	CMD
TERM 4	VDD
TERM 5	CLK
TERM 6	VSS
TERM 7	DATA 0
TERM 8	DATA 1



THIRD ANGLE PROJECTION		GENERAL TOLERANCES (UNLESS SPECIFIED)		APPROVE BY	DATE	PART NO.	ITEM NO.	 Leader Of Industry
		X.±.012(0.30)	X'.±5'	FRANK	18/JUN/17	FCD413-2M	FCD413	
DESIGN UNITS	Inch (metric)	X.X±.008(0.20)	.X'±2'	CHECKED BY	DATE	TITLE		
SCALE	SIZE	X.XX±.006(0.15)	.XX'±1'	CHERRY	18/JUN/17	Mirco SD card connector(H:1.45mm) (Push to Push)		
5:1	A4	X.XXX±.004(0.10)	.XXX'±0.5'	DRAWN BY	DATE	THIS DRAWING CONTAINS INFORMATION THAT IS PROPRIETARY TO TXGA INDUSTRIAL ELECTRONICS(S.Z)CO.,LTD AND SHOULD NOT BE USED WITHOUT WRITTEN PERMISSION		
				KATE	18/JUN/17	REV 1	SHEET NO. 1/3	

REV	LOCATIONS	DESCRIPTION	DATE	REVISER	APPD

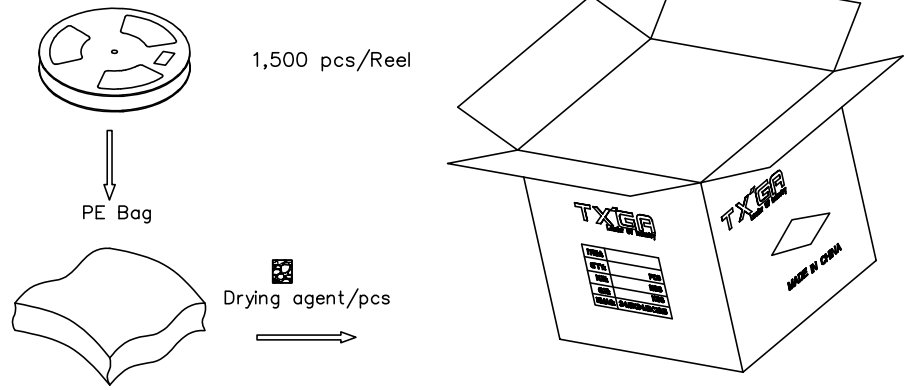
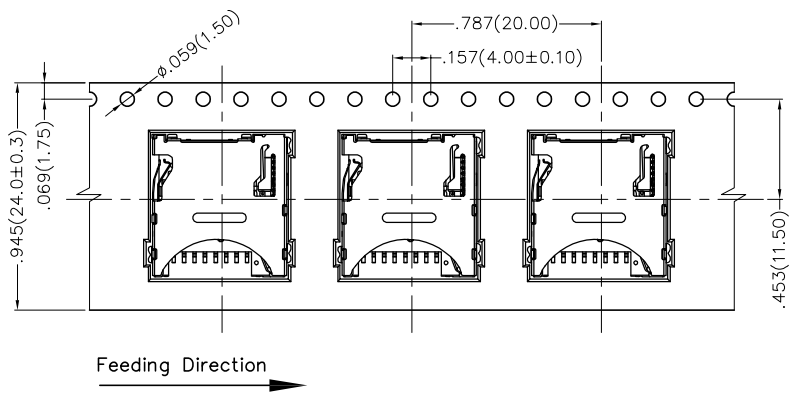
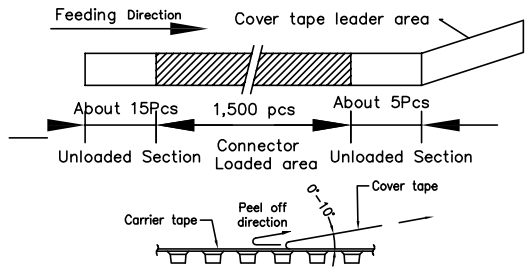
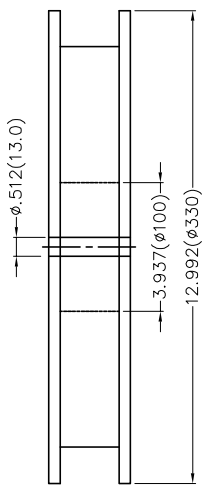
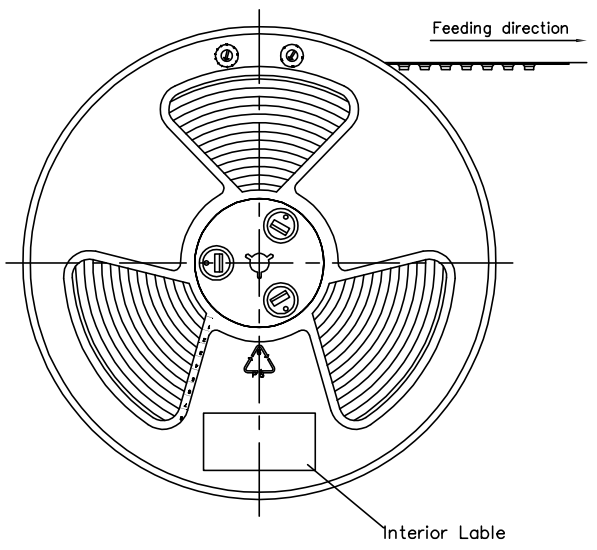


Recommended P.C.Board Layout
 General tolerances: $\pm 0.002(0.05)$

 THIRD ANGLE PROJECTION	GENERAL TOLERANCES (UNLESS SPECIFIED)		APPROVE BY FRANK	DATE 18/JUN/17	PART NO. FCD413-2M	ITEM NO. FCD413	 Leader Of Industry
	DESIGN UNITS Inch (metric)	X.±.012(0.30)	X'.±5'	CHECKED BY CHERRY	DATE 18/JUN/17	TITLE Mirco SD card connector(H:1.45mm) (Push to Push)	
SCALE 5:1	SIZE A4	X.XX±.006(0.15)	.XX'±1'	DRAWN BY KATE	DATE 18/JUN/17	THIS DRAWING CONTAINS INFORMATION THAT IS PROPRIETARY TO TXGA INDUSTRIAL ELECTRONICS(S.Z)CO.,LTD AND SHOULD NOT BE USED WITHOUT WRITTEN PERMISSION	
		X.XXX±.004(0.10)	.XXX'±0.5'			REV 1	SHEET NO. 2/3

REV	LOCATIONS	DESCRIPTION	DATE	REVISER	APPD

- Note:
- 10 sprocket hole cumulative tolerance $\pm 0.008(0.2)$
 - Carrier camber is within 1.0mm in 100mm
 - Material: Clear Conductive polystyrene Alloy 100% recyclable
 - All dimensions meet EIA-481-3 requirements
 - Component load per 13" reel: 1,500pcs



 THIRD ANGLE PROJECTION	GENERAL TOLERANCES (UNLESS SPECIFIED)		APPROVE BY	DATE	PART NO.	ITEM NO.	 Leader Of Industry
	X.±.012(0.30)	X.±5'	FRANK	18/JUN/17	FCD413-2M	FCD413	
DESIGN UNITS	X.X±.008(0.20)	.X'±2'	CHECKED BY	DATE	TITLE		REV 1
Inch (metric)	X.XX±.006(0.15)	.XX'±1'	CHERRY	18/JUN/17	Mirco SD card connector(H:1.45mm) (Push to Push)		
SCALE	X.XXX±.004(0.10)	.XXX'±0.5'	DRAWN BY	DATE	THIS DRAWING CONTAINS INFORMATION THAT IS PROPRIETARY TO TXGA INDUSTRIAL ELECTRONICS(S.Z)CO.,LTD AND SHOULD NOT BE USED WITHOUT WRITTEN PERMISSION		
5:1			KATE	18/JUN/17			