

1 2 3 4 5 6 7 8

REV	LOCATIONS	DESCRIPTION	DATE	REVISER	APPD

A

B

C

D

E

F

A

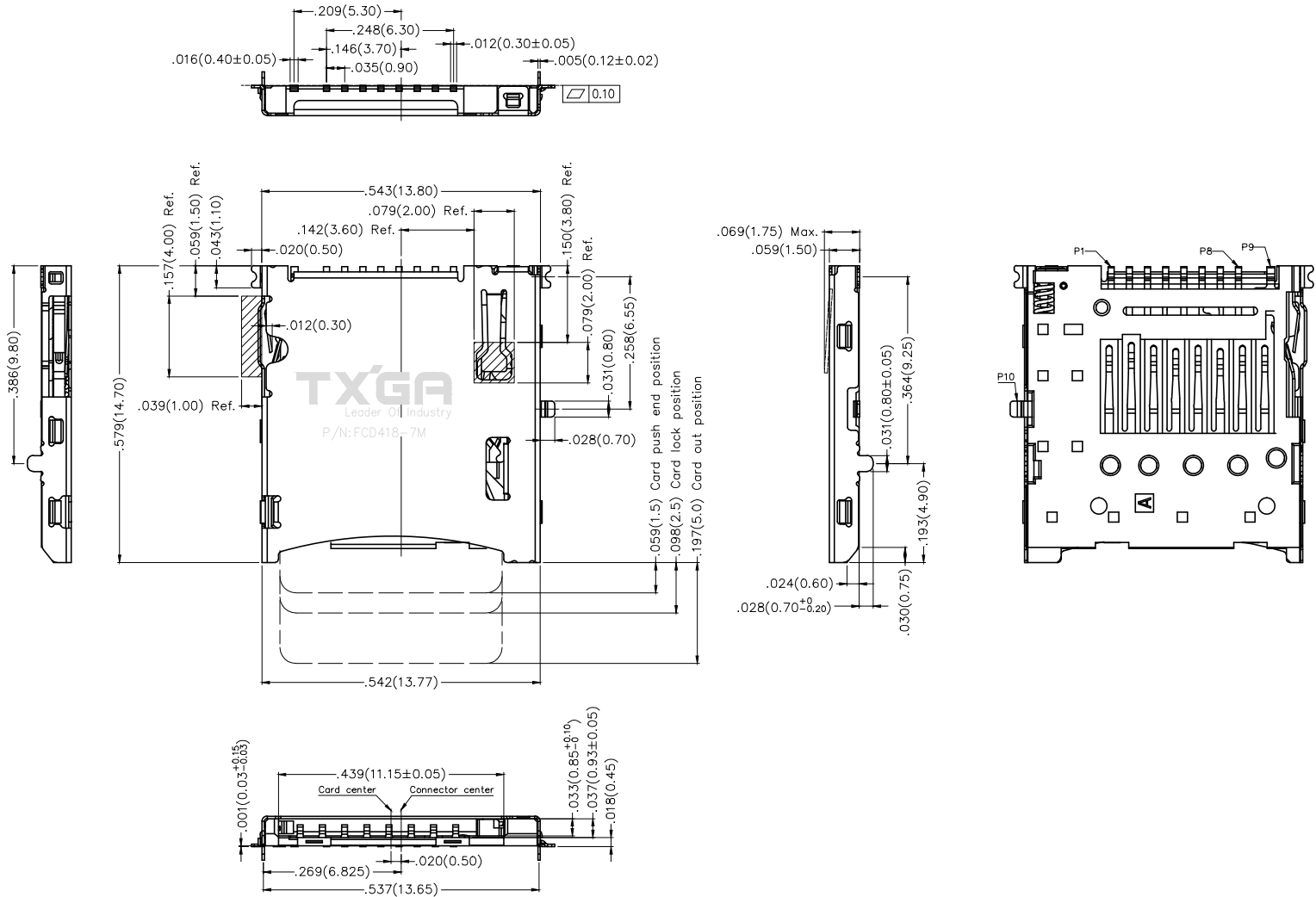
B

C

D

E

F



<p>THIRD ANGLE PROJECTION</p>	GENERAL TOLERANCES (UNLESS SPECIFIED)		APPROVE BY	DATE	PART NO.	ITEM NO.	<p>Leader Of Industry</p>
	X.±.012(0.30)	X.±5'	FRANK	12/JUL/19	FCD418-7M	FCD418	
	X.X±.008(0.20)	.X'±2'	CHECKED BY	DATE	TITLE		
	X.XX±.006(0.15)	.XX'±1'	CHERRY	12/JUL/19	Micro sd card connector(H=1.5mm)		
SCALE	SIZE	X.XXX±.004(0.10)	.XXX'±0.5'	DRAWN BY	DATE	THIS DRAWING CONTAINS INFORMATION THAT IS PROPRIETARY TO TXGA INDUSTRIAL ELECTRONICS(S.Z)CO.,LTD AND SHOULD NOT BE USED WITHOUT WRITTEN PERMISSION	
5:1	A4			KATE	12/JUL/19	REV 0	SHEET NO. 1/3

1 2 3 4 5 6 7 8

REV	LOCATIONS	DESCRIPTION	DATE	REVISER	APPD

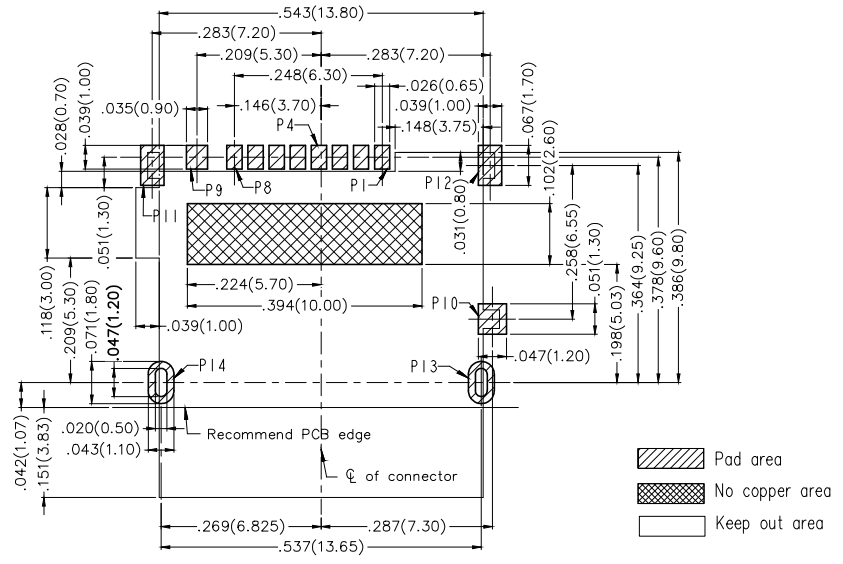
**SPECIFICATIONS**

**Electrical**

Current Rating: 0.5A AC(rms)/DC  
Voltage Rating: 100V AC(rms)/DC  
Contact Resistance: 100 mΩ Max  
Insulation Resistance: 1000 MΩ Min/DC 250V  
Withstanding Voltage: 500V AC r.m.s  
Temperature Range-Operating: -25°C~+85°C

**Material**

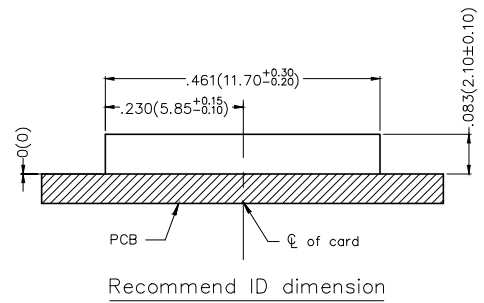
Housing: LCP (UL 94V-0) Black  
Contact: Copper alloy  
Shell: SUS304  
Plating  
Contact: 1μ" gold in contact area, gold flash in solder area, Nickel plated overall  
Shell: Gold flash in solder area, Nickel plated overall



Recommended P.C.Board Layout  
General tolerances: ±.002(0.05)

Pin No.	PIN ASSIGNMENT
P1	MICRO SD_DAT2
P2	MICRO SD_CD/DAT3
P3	MICRO SD_CMD
P4	MICRO SD_VDD
P5	MICRO SD_CLK
P6	MICRO SD_VSS
P7	MICRO SD_DAT0
P8	MICRO SD_DAT1
P9	MICRO SD_CD
P10	GND
P11	GND
P12	GND
P13	GND
P14	GND

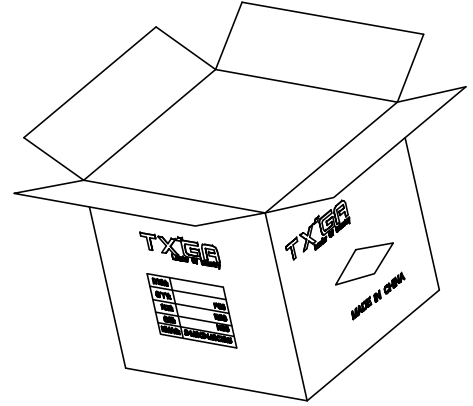
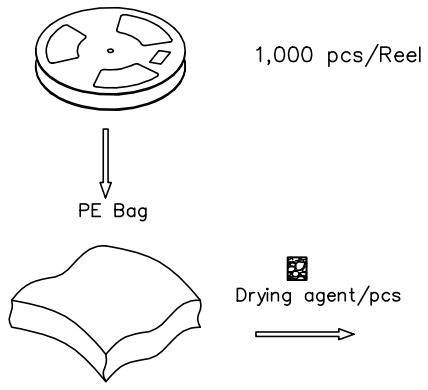
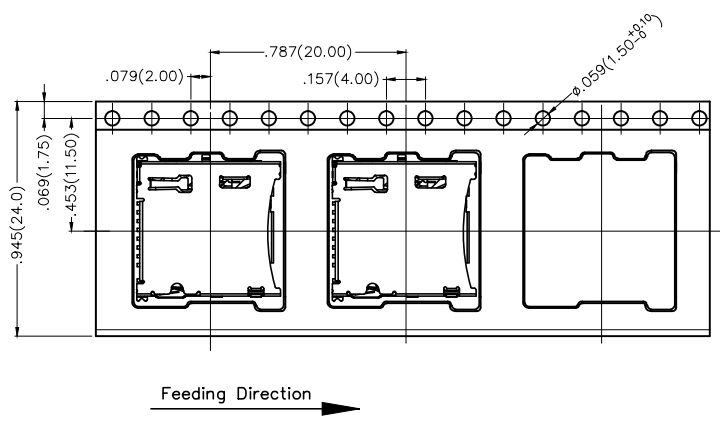
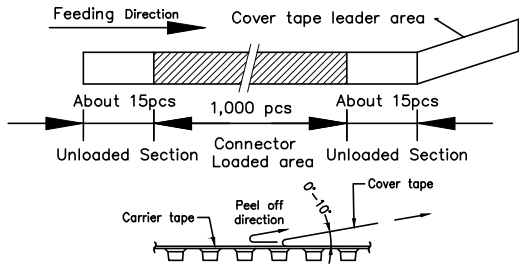
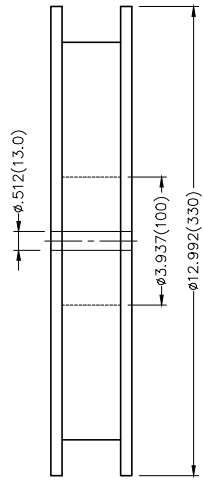
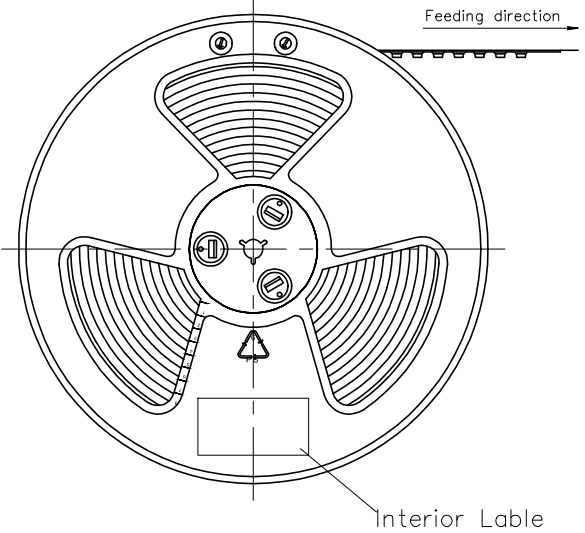
Card Detect Switch	
Card Uninsertion	Open
Card Half Insertion	Open
Card Insertion	Close
N/O	



 THIRD ANGLE PROJECTION	GENERAL TOLERANCES (UNLESS SPECIFIED)		APPROVE BY FRANK	DATE 12/JUL/19	PART NO. FCD418-7M	ITEM NO. FCD418	 Leader Of Industry
	DESIGN UNITS Inch (metric)	X.±.012(0.30)	X'±5'	CHECKED BY CHERRY	DATE 12/JUL/19	TITLE Micro sd card connector(H=1.5mm)	
SCALE 5:1	SIZE A4	X.XX±.006(0.15)	.XX'±1'	DRAWN BY KATE	DATE 12/JUL/19	THIS DRAWING CONTAINS INFORMATION THAT IS PROPRIETARY TO TXGA INDUSTRIAL ELECTRONICS(S.Z)CO.,LTD AND SHOULD NOT BE USED WITHOUT WRITTEN PERMISSION	
						REV 0	SHEET NO. 2/3

REV	LOCATIONS	DESCRIPTION	DATE	REVISER	APPD

- Note:
- 10 sprocket hole cumulative tolerance  $\pm 0.2$
  - Carrier camber is within 1.0mm in 100mm
  - Material: White Conductive polystyrene Alloy 100% recyclable
  - All dimensions meet EIA-481-3 requirements
  - Component load per 13" reel: 1,000 pcs



<p>THIRD ANGLE PROJECTION</p>	GENERAL TOLERANCES (UNLESS SPECIFIED)		APPROVE BY FRANK	DATE 12/JUL/19	PART NO. FCD418-7M	ITEM NO. FCD418	<p>Leader Of Industry</p>
	X.X $\pm$ .012(0.30)	X.' $\pm$ 5'	CHECKED BY CHERRY	DATE 12/JUL/19	TITLE Micro sd card connector(H=1.5mm)		
DESIGN UNITS Inch (metric)	X.X $\pm$ .008(0.20)	X.' $\pm$ 2'	DRAWN BY KATE	DATE 12/JUL/19	THIS DRAWING CONTAINS INFORMATION THAT IS PROPRIETARY TO TXGA INDUSTRIAL ELECTRONICS(S.Z)CO.,LTD AND SHOULD NOT BE USED WITHOUT WRITTEN PERMISSION		
SCALE 5:1	SIZE A4	X.XX $\pm$ .006(0.15)	X.' $\pm$ 1'				
		X.XXX $\pm$ .004(0.10)	.XXX' $\pm$ 0.5'				