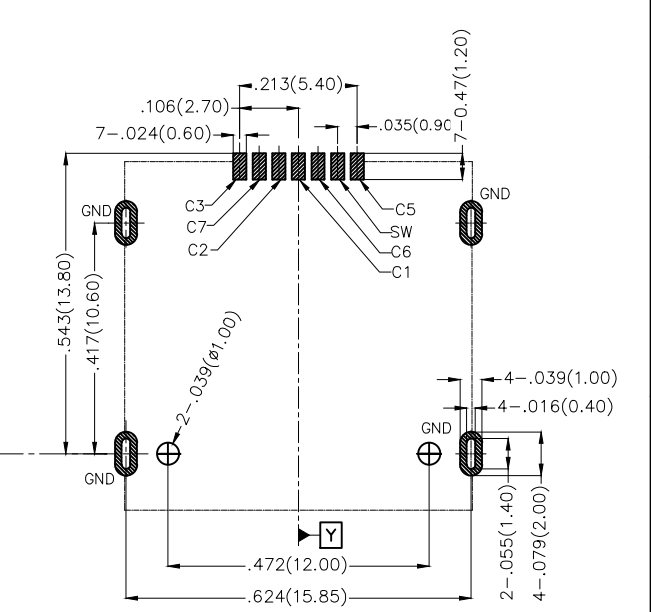
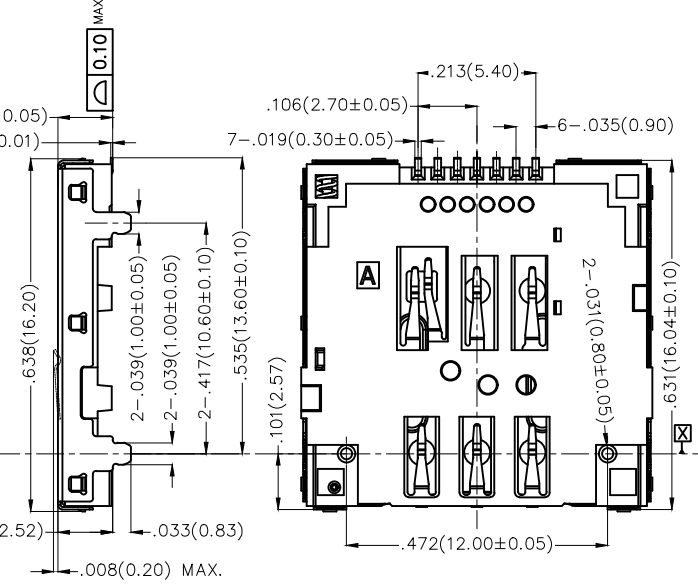
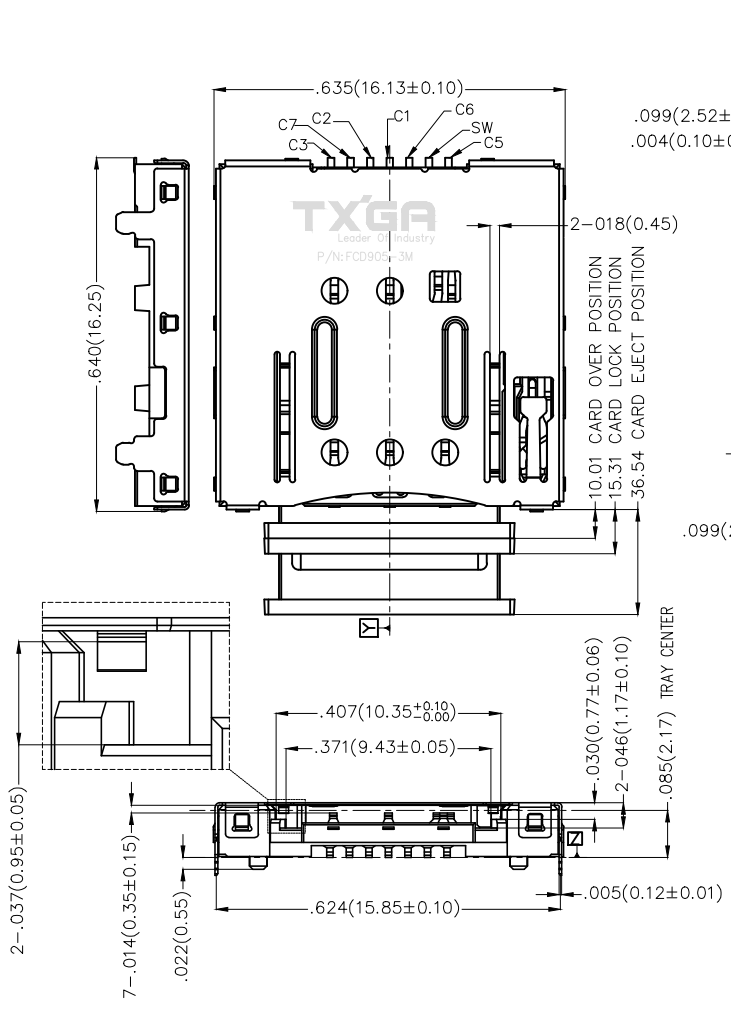


REV	LOCATIONS	DESCRIPTION	DATE	REVISER	APPD
-----	-----------	-------------	------	---------	------

A  
B  
C  
D  
E  
F

A  
B  
C  
D  
E  
F



**RECOMMEND P.C.B LAYOUT(TOP VIEW)**  
(General tolerance ±0.05)

- PAD AREA
- KEEP OUT AREA
- NO COPPER AREA (NO Trace&Via&GND)
- GND PATTERN ONLY

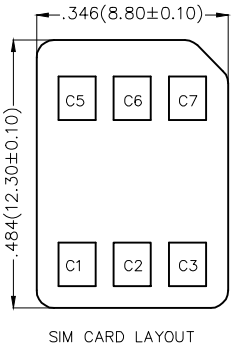
**Electrical**  
 Current Rating: 0.5A AC(rms)/DC  
 Voltage Rating: 30V AC(rms)/DC  
 Contact Resistance: 50 m Ω Max  
 Insulation Resistance: 100 M Ω MIN  
 Withstanding Voltage: 500V AC r.m.s  
 Temperature Range-Operating: -30°C~+85°C

**Material and Plating**  
 Housing: LCP Black Color  
 Shell: SUS304 Nickel Plating  
 Contact Pin: Phosphor Bronze  
 Plating: Selective gold in contact area, Tin on tail.

**SIM Card Pin Assignments**

NANO SIM CARD	
C1	VCC
C2	RST
C3	CLK
C5	GND
SW	CD/SW
C6	VPP
C7	DATA

COMPOSITION OF DETECTION	
CARD DETECT(SW)	SW
CARD DETECTION/SWITCH	SW
CARD INSTALLATION:ON	
NON CARD:OFF	

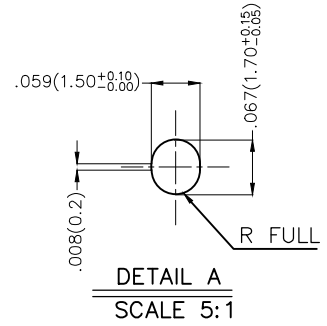
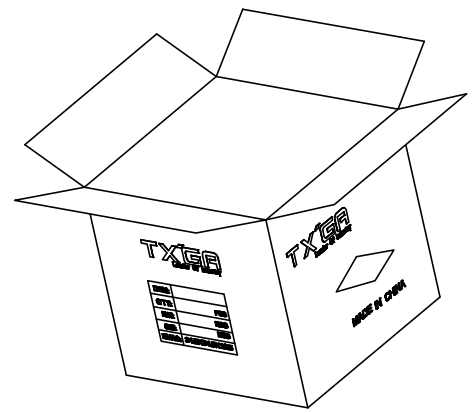
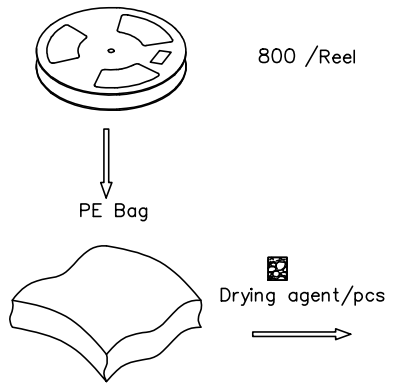
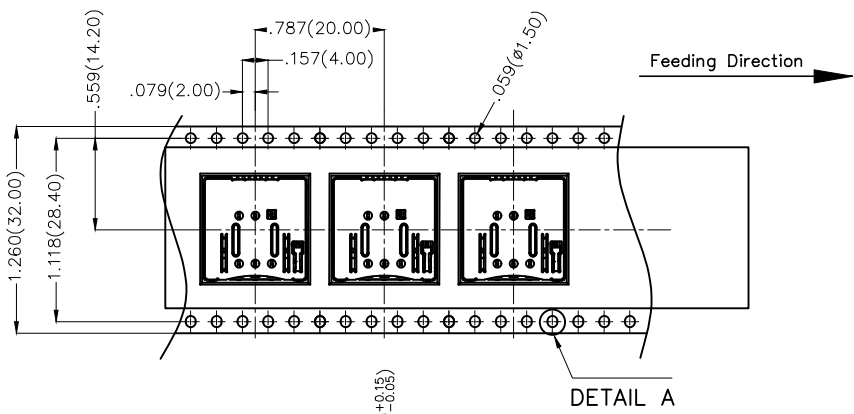
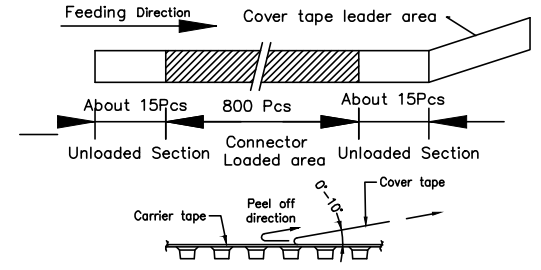
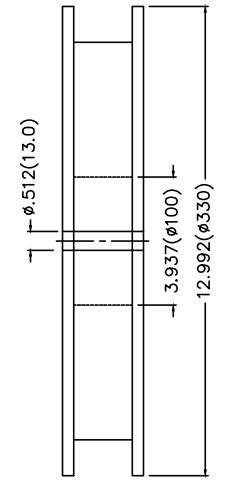
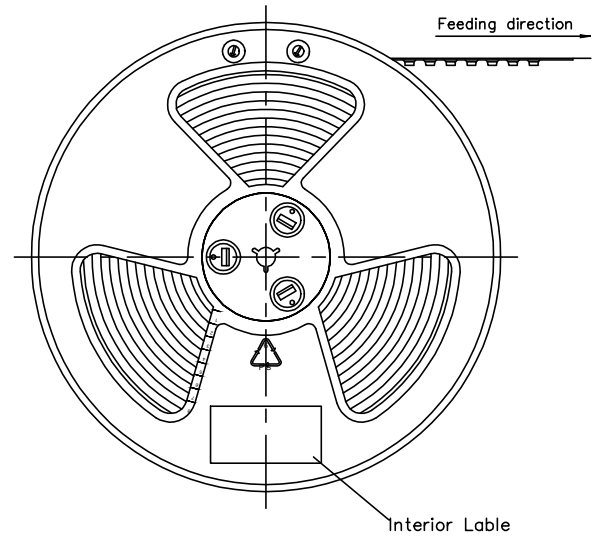


SIM CARD LAYOUT

 THIRD ANGLE PROJECTION DESIGN UNITS Inch (metric) SCALE 5:1 SIZE A4	GENERAL TOLERANCES (UNLESS SPECIFIED)		APPROVE BY FRANK	DATE 10/JUL/19	PART NO. FCD905-3M	ITEM NO. FCD905	 Leader Of Industry
	X.±.012(0.30)	X.±5'	CHECKED BY CHERRY	DATE 10/JUL/19	TITLE nanosim tray push2.52H		
	X.X±.008(0.20)	X.±2'	DRAWN BY ZOEY	DATE 10/JUL/19	REV 0	SHEET NO. 1/2	
	X.XX±.006(0.15)	.XX±1'	THIS DRAWING CONTAINS INFORMATION THAT IS PROPRIETARY TO TXGA INDUSTRIAL ELECTRONICS(S,Z)CO.,LTD AND SHOULD NOT BE USED WITHOUT WRITTEN PERMISSION				
	X.XXX±.004(0.10)	.XXX±0.5'					

REV	LOCATIONS	DESCRIPTION	DATE	REVISER	APPD

- Note:
- 10 sprocket hole cumulative tolerance  $\pm 0.2$
  - Carrier camber is within 1.0mm in 100mm
  - Material: White Conductive polystyrene Alloy 100% recyclable
  - All dimensions meet EIA-481-3 requirements
  - Component load per 13" reel: 800pcs



 THIRD ANGLE PROJECTION	GENERAL TOLERANCES (UNLESS SPECIFIED)		APPROVE BY	DATE	PART NO.	ITEM NO.	 Leader Of Industry
	X. $\pm$ .012(0.30)	X. $\pm$ 5'	FRANK	11/JUL/19	FCD905-3M	FCD905	
	X.X $\pm$ .008(0.20)	.X $\pm$ 2'	CHECKED BY	DATE	TITLE		THIS DRAWING CONTAINS INFORMATION THAT IS PROPRIETARY TO TXGA INDUSTRIAL ELECTRONICS(S.Z)CO.,LTD AND SHOULD NOT BE USED WITHOUT WRITTEN PERMISSION
	X.XX $\pm$ .006(0.15)	.XX $\pm$ 1'	CHERRY	11/JUL/19	nanosim tray push2.52H		
SCALE	SIZE	X.XXX $\pm$ .004(0.10)	.XXX $\pm$ 0.5'	DRAWN BY	DATE	REV 0	SHEET NO. 2/2
5:1	A4	ZOEY		ZOEY	11/JUL/19		