

REV	LOCATIONS	DESCRIPTION	DATE	REVISER	APPD
1	△	Plastic mold Change Updated P.C.Board Layout	11/JAN/22	MATT	CHERRY

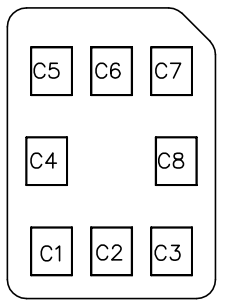
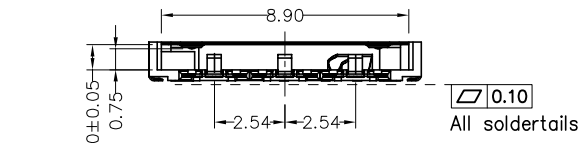
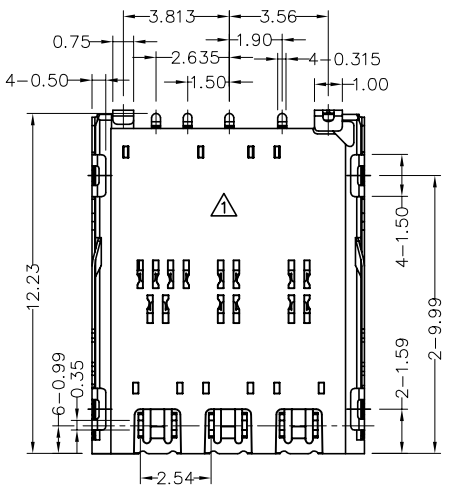
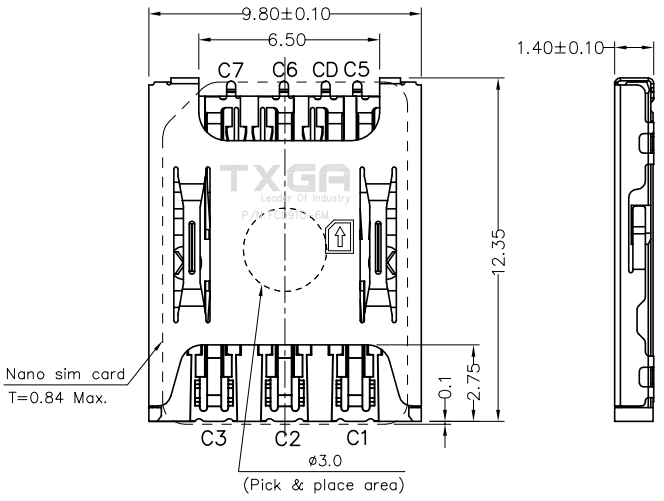
SPECIFICATIONS

Electrical
 Current Rating: 0.5A Max AC(rms)/DC
 Voltage Rating: 30V AC(rms)/DC
 Contact Resistance: 100 mΩ Max
 Insulation Resistance: 1000 MΩ Min/DC 500V
 Withstanding Voltage: 500V AC r.m.s
 Temperature Range-Operating: -25°C~+85°C

Mechanical
 Durability: 5,000 cycles
 Insertion Force: 10N Max
 Withdrawal Fore: 0.5N Min

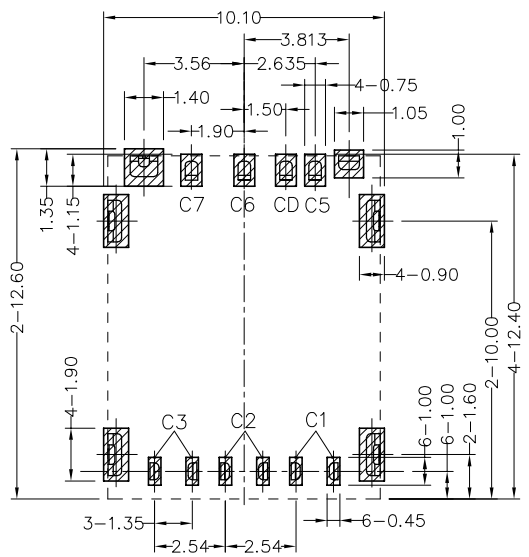
Material
 Housing: LCP (UL 94V-0) Black
 Contact: Phosphor bronze, T=0.12
 Shell: SUS304, T=0.2

Plating
 Contact: Gold flash on contact area and solder area,
 Nickel plated overall
 Shell: Gold flash on solder area, Nickel plated overall



Nano SIM Card Pin Assignments

PIN	Description
C1	Vcc
C2	RST
C3	CLK
C4	Reserved
C5	GND
C6	Vpp
C7	I/O
C8	Reserved



△ Recommended P.C.Board Layout
 Tolerances: ±0.05

SW Circuit Description for Connector:

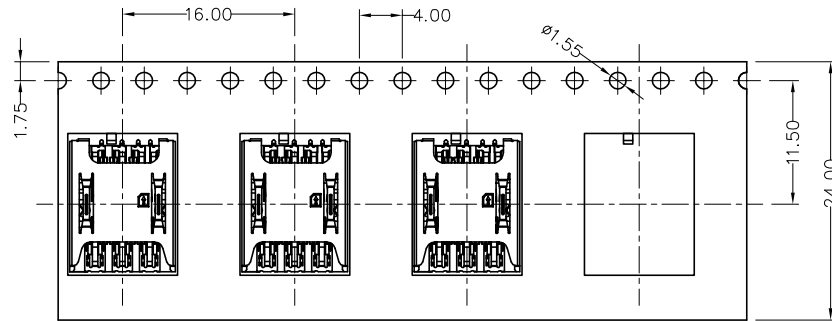
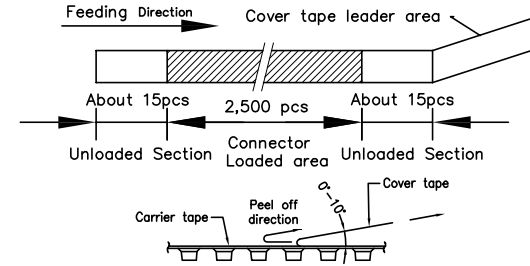
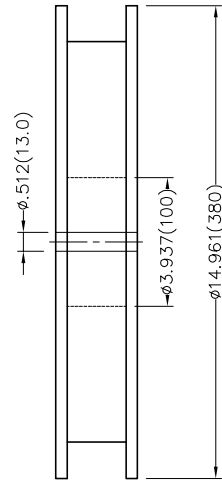
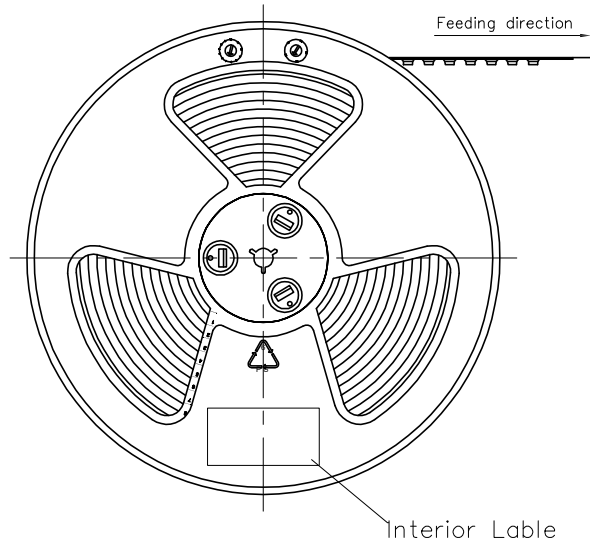
CARD INSERTION STATE	DETECT SWITCH CIRCUIT STATE	SCHEMATIC
UNMATED	OPENED	DETECT PIN [CD] - [C5]
MATED	CLOSED	DETECT PIN [CD] - [C3]

 THIRD ANGLE PROJECTION	GENERAL TOLERANCES (UNLESS SPECIFIED)		APPROVE BY FRANK	DATE 30/NOV/21	PART NO. FCD910-6M	ITEM NO. FCD910	 Leader Of Industry
	DESIGN UNITS Metric	X. ±0.30 X.X ±0.20 X.XX ±0.15 X.XXX ±0.10	X.* ±5° X.X* ±2° X.XX* ±1° X.XXX* ±0.5°	CHECKED BY CHERRY	DATE 30/NOV/21	TITLE Nano sim card connector (H=1.4mm)	
SCALE 5:1	SIZE A4		DRAWN BY KATE	DATE 30/NOV/21	THIS DRAWING CONTAINS INFORMATION THAT IS PROPRIETARY TO TXGA INDUSTRIAL ELECTRONICS(S.Z)CO.,LTD AND SHOULD NOT BE USED WITHOUT WRITTEN PERMISSION		REV 1 SHEET NO. 1/2

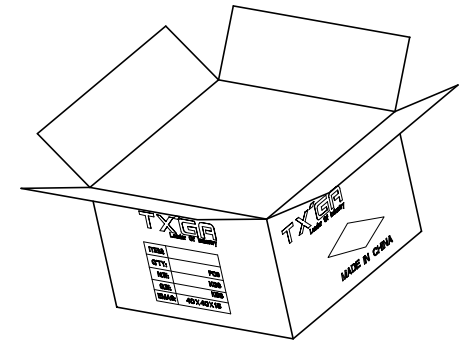
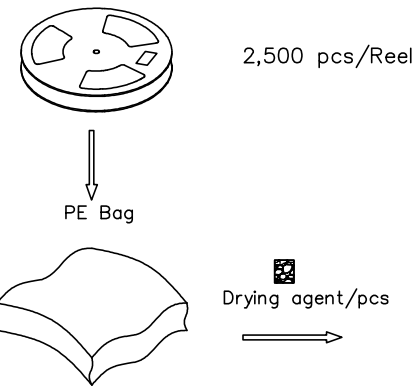
REV	LOCATIONS	DESCRIPTION	DATE	REVISER	APPD

Note:

- 10 sprocket hole cumulative tolerance ± 0.2
- Carrier camber is within 1.0mm in 100mm
- Material: Transparent Conductive polystyrene Alloy 100% recyclable
- All dimensions meet EIA-481-3 requirements
- Component load per 13" reel: 2,500 pcs



Feeding Direction →



 THIRD ANGLE PROJECTION DESIGN UNITS Metric SCALE 5:1 SIZE A4	GENERAL TOLERANCES (UNLESS SPECIFIED)		APPROVE BY FRANK	DATE 30/NOV/21	PART NO. FCD910-6M	ITEM NO. FCD910	 Leader Of Industry
	X. ± 0.30	X.* $\pm 5^\circ$	CHECKED BY CHERRY	DATE 30/NOV/21	TITLE Nano sim card connector (H=1.4mm)		
	X.XX ± 0.15	X.XX' $\pm 1'$	DRAWN BY KATE	DATE 30/NOV/21	THIS DRAWING CONTAINS INFORMATION THAT IS PROPRIETARY TO TXGA INDUSTRIAL ELECTRONICS(S.Z)CO.,LTD AND SHOULD NOT BE USED WITHOUT WRITTEN PERMISSION		
	X.XXX ± 0.10	X.XXX* $\pm 0.5'$					