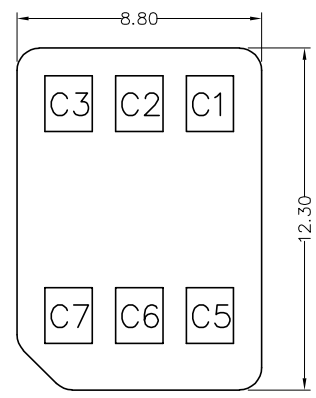


Recommended P.C.Board Layout
Tolerances: ±0.05



Nano SIM Card Pin Assignments

PIN	Description
C1	VCC
C2	RST
C3	CLK
C5	GND
C6	VPP
C7	I/O
SW	Detection switch

REV	LOCATIONS	DESCRIPTION	DATE	REVISER	APPD
1	△	New mold Updated P.C.Board Layout Update packaging	19/MAR/26	MATT	LEO

SPECIFICATIONS

Electrical

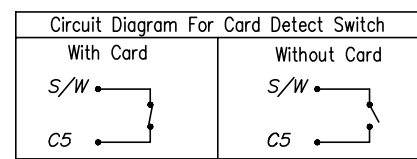
- Current Rating: 0.5A Max AC(rms)/DC
- Voltage Rating: 30V AC(rms)/DC
- Contact Resistance: 50 mΩ Max
- Insulation Resistance: 1000 MΩ Min/DC 500V
- Withstanding Voltage: 500V AC r.m.s
- Temperature Range-Operating: -40°C~+85°C

Material

- Housing: LCP (UL 94V-0) Black
- Contact: Phosphor bronze
- Shell: SUS304

Plating

- Contact: Gold flash on contact area and solder area, Nickel plated overall
- Shell: Gold flash on solder area, Nickel plated overall



A
B
C
D
E
F

Step 1: Insert Nano SIM card

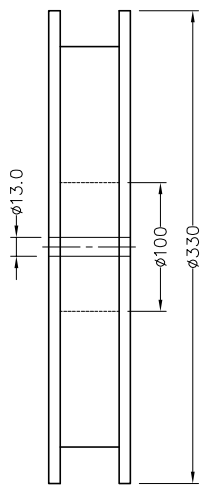
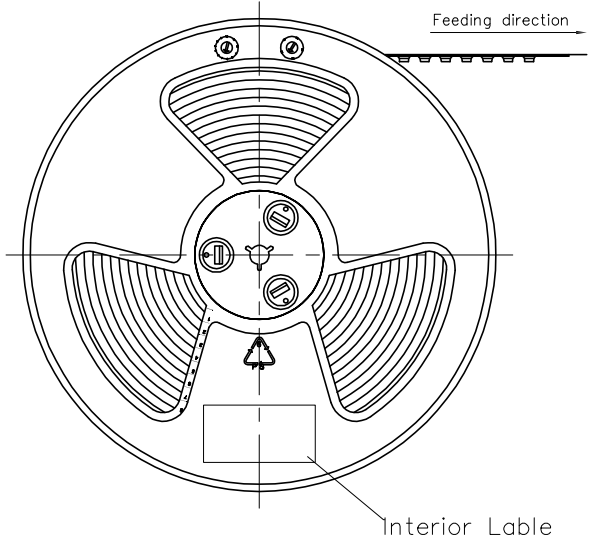
Step 2: Push the shell

Step 3: Finish

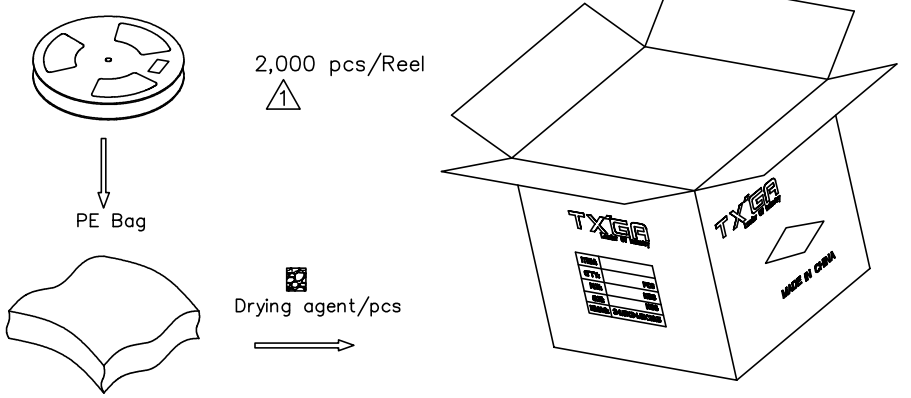
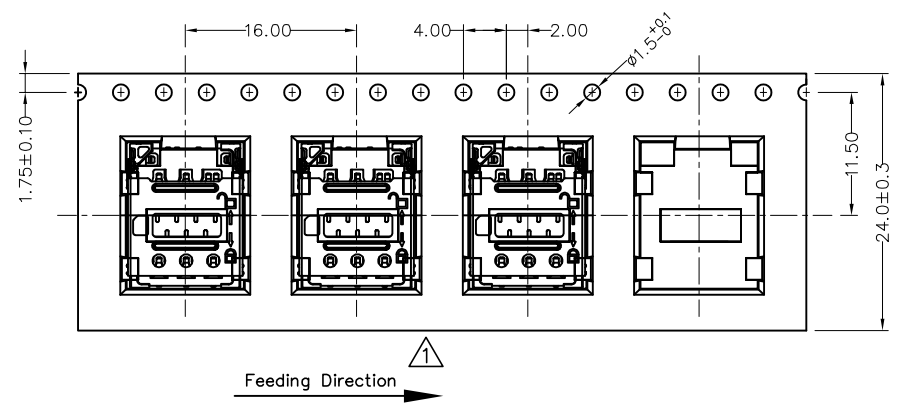
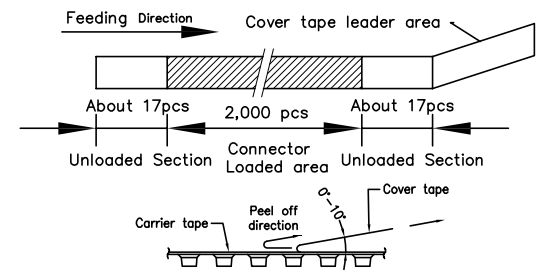
<p>THIRD ANGLE PROJECTION</p>	GENERAL TOLERANCES (UNLESS SPECIFIED)		APPROVE BY	DATE	PART NO.	ITEM NO.	<p>Building Technology Cornerstone</p>	
	X. ±0.30	X.° ±5°	FRANK	01/DEC/21	FCD913-8M	FCD913		
	DESIGN UNITS	X.X ±0.20	X.X' ±2'	CHECKED BY	DATE	TITLE		
	Metric	X.XX ±0.15	X.XX' ±1'	CHERRY	01/DEC/21	Nano sim card connector (H=1.35mm)		
SCALE	SIZE	X.XXX ±0.10	X.XXX' ±0.5'	DRAWN BY	DATE	THIS DRAWING CONTAINS INFORMATION THAT IS PROPRIETARY TO TXGA INDUSTRIAL ELECTRONICS(S.Z)CO.,LTD AND SHOULD NOT BE USED WITHOUT WRITTEN PERMISSION		
5:1	A4			KATE	01/DEC/21	REV 1	SHEET NO. 1/2	

1 2 3 4 5 6 7 8

REV	LOCATIONS	DESCRIPTION	DATE	REVISER	APPD



- Note:
- 10 sprocket hole cumulative tolerance ± 0.2
 - Carrier camber is within 1.0mm in 100mm
 - Material: Transparent Conductive polystyrene Alloy 100% recyclable
 - All dimensions meet EIA-481-3 requirements
 - Component load per 13" reel: 2,000 pcs



 THIRD ANGLE PROJECTION	GENERAL TOLERANCES (UNLESS SPECIFIED)		APPROVE BY	DATE	PART NO.	ITEM NO.	 Building Technology Cornerstone
	X. ±0.30	X.' ±5'	FRANK	01/DEC/21	FCD913-8M	FCD913	
DESIGN UNITS	X.X ±0.20	X.X' ±2'	CHECKED BY	DATE	TITLE		REV 1
Metric	X.XX ±0.15	X.XX' ±1'	CHERRY	01/DEC/21	Nano sim card connector (H=1.35mm)		
SCALE	SIZE	X.XXX ±0.10	X.XXX' ±0.5'	DRAWN BY	DATE	THIS DRAWING CONTAINS INFORMATION THAT IS PROPRIETARY TO TXGA INDUSTRIAL ELECTRONICS(S.Z)CO.,LTD AND SHOULD NOT BE USED WITHOUT WRITTEN PERMISSION	
5:1	A4			KATE	01/DEC/21		