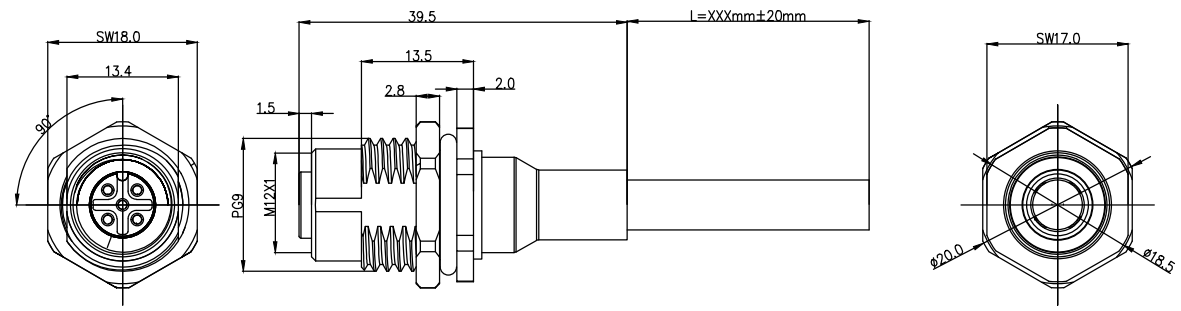


	1	2	3	4	5
Coded	2Pin	3Pin	4Pin	5Pin	
A-Coded					
B-Coded					
D-Coded					

REV	LOCATIONS	DESCRIPTION	DATE	REVISER	APPD

2~5PIN

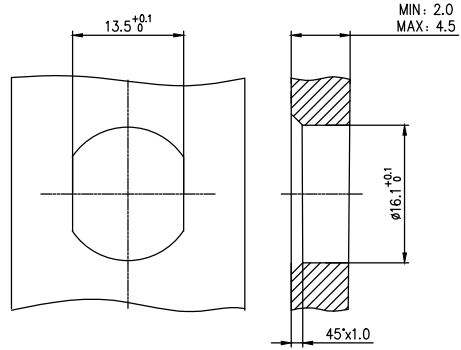


- Note:
1. Waterproof Rate: IP68
 2. This product must meet IEC61076-2-101
 3. This product must meet 2011/65/EU ROHS compliance.
 4. Not note tolerances: ±0.20
 5. working temperature: -40°C~105°C
 6. Mechanical operation: > 100 mating cycles

Ordering Information

FCF2M12 - $\frac{S}{1}$ $\frac{X}{2}$ $\frac{XX}{3}$ $\frac{S}{4}$ $\frac{S}{5}$ $\frac{P}{6}$ $\frac{S}{7}$ $\frac{XXX}{8}$ - $\frac{00}{10}$

1 Series Name FCF2M12	2 Category S-socket	3 Coded A-A CODED B-B CODED D-D CODED	4 Circuits 02-2Circuits 03-3Circuits 04-4Circuits 05-5Circuits 06-6Circuits 07-7Circuits 08-8Circuits 09-9Circuits 10-10Circuits 11-11Circuits 12-12Circuits	5 Contact S-socket
--------------------------	------------------------	--	---	-----------------------



Recommended Panel Cut-Out

Pin Assignments Front View	Rated Voltage	Rated impulse Voltage	Rated Current	Insulation resistance	Cable diameter	Wire Sizemm ² AWG
	250V	2500V	4A	≥100MΩ	4.5	0.34mm ² /22AWG
	250V	2500V	4A	≥100MΩ	5.0	0.34mm ² /22AWG
	250V	2500V	4A	≥100MΩ	5.5	0.34mm ² /22AWG
	60V	1500V	4A	≥100MΩ	6.0	0.34mm ² /22AWG

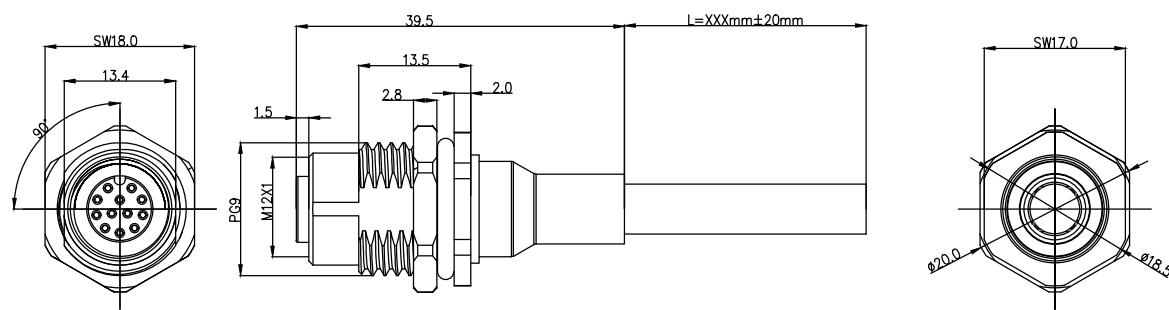
2Pin(A/B/D)		3Pin(A/B/D)		4Pin(A/B/D)		5Pin(A/B/D)	
Shell-Shield	Wire Color	Shell-Shield	Wire Color	Shell-Shield	Wire Color	Shell-Shield	Wire Color
	5		gray				
	4	Black	4	Black	4	Black	4
3	Blue	3	Blue	3	Blue	3	Blue
			2	White	2	White	
1	Brown	1	Brown	1	Brown	1	Brown
pin	wire color	pin	wire color	pin	wire color	pin	wire color

6 Entry Angle S-180° Vertical	7 Wiring type P-Crimp	8 Shield S-shield	9 LENGTH 002-(200mm) 003-(200mm) ~ 010-(1.0m)	10 SN 00
----------------------------------	--------------------------	----------------------	---	-------------

<p>THIRD ANGLE PROJECTION</p>	GENERAL TOLERANCES (UNLESS SPECIFIED)		APPROVE BY LEO	DATE 14/Jun/24	PART NO. FCF2M12-SXXXSSPSXXX-00	ITEM NO. FCF2M12	<p>Building Technology Cornerstone</p>
	X. ±0.30	X.' ±5'	CHECKED BY GISELLE	DATE 14/Jun/24	TITLE M12 Female panel mount connector, unshielded, shield, IP68, PG9, front fastened	REV 0	
DESIGN UNITS METRIC	X.X ±0.20	X.X' ±2'	DRAWN BY King	DATE 14/Jun/24	THIS DRAWING CONTAINS INFORMATION THAT IS PROPRIETARY TO TXGA INDUSTRIAL ELECTRONICS(S.Z)CO.,LTD AND SHOULD NOT BE USED WITHOUT WRITTEN PERMISSION		
SCALE 1:1	SIZE A4	X.XX ±0.15	X.XX' ±1'				
		X.XXX ±0.10	X.XXX' ±0.5'				

1	2	3	4	5	6	7	8			
Coded	9Pin	10Pin	11Pin	12Pin	REV	LOCATIONS	DESCRIPTION	DATE	REVISER	APPD
A-Coded										

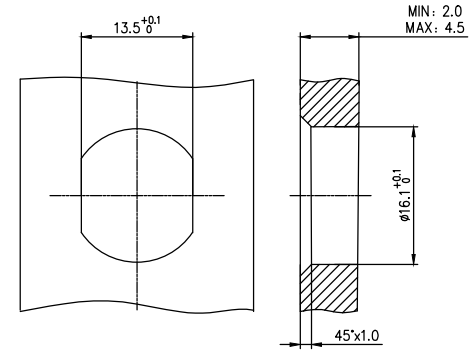
9~12PIN



- Note:
1. Waterproof Rate: IP68
 2. This product must meet IEC61076-2-101
 3. This product must meet 2011/65/EU ROHS compliance.
 4. Not note tolerances: ±0.20
 5. working temperature: -40°C~105°C
 6. Mechanical operation: > 100 mating cycles

Pin Assignments Front View	Rated Voltage	Rated impulse Voltage	Rated Current	Insulation resistance	Cable diameter	Wire Sizemm ² AWG
	30V	800V	1.5A	≥100MΩ	6.0	0.14mm ² /26AWG
	30V	800V	1.5A	≥100MΩ	6.0	0.14mm ² /26AWG
	30V	800V	1.5A	≥100MΩ	6.5	0.14mm ² /26AWG
	30V	800V	1.5A	≥100MΩ	6.5	0.14mm ² /26AWG

9Pin	10Pin	11Pin	12Pin
Shell-Shield	Shell-Shield	Shell-Shield	Shell-Shield
		11	12
		yellow/green	red/white
	10	purple	11
9	red	9	red
8	gray	8	gray
7	black	7	black
6	yellow	6	yellow
5	pink	5	pink
4	green	4	green
3	white	3	white
2	blue	2	blue
1	brown	1	brown
pin	wire color	pin	wire color



Recommended Panel Cut-Out

Ordering Information

FCF2M12 - $\frac{S}{1}$ $\frac{X}{2}$ $\frac{XX}{3}$ $\frac{S}{4}$ $\frac{S}{5}$ $\frac{P}{6}$ $\frac{S}{7}$ $\frac{S}{8}$ $\frac{XXX}{9}$ - $\frac{00}{10}$

1 Series Name FCF2M12	2 Category S-socket	3 Coded A-A CODED B-B CODED D-D CODED	4 Circuits 02-2Circuits 03-3Circuits 04-4Circuits 05-5Circuits 06-6Circuits 07-7Circuits 08-8Circuits 09-9Circuits 10-10Circuits 11-11Circuits 12-12Circuits	5 Contact S-socket
--------------------------	------------------------	--	---	-----------------------

6 Entry Angle S-180° Vertical	7 Wiring type P-Crimp	8 Shield S-shield	9 LENGTH 002-(200mm) 003-(200mm) ~ 010-(1.0m)	10 SN 00
----------------------------------	--------------------------	----------------------	---	-------------

 THIRD ANGLE PROJECTION	GENERAL TOLERANCES (UNLESS SPECIFIED) X. ±0.30 X.* ±5' X.X ±0.20 X.X' ±2' X.XX ±0.15 X.XX' ±1' X.XXX ±0.10 X.XXX' ±0.5'		APPROVE BY LEO	DATE 14/Jun/24	PART NO. FCF2M12-SXXXSSPSXXX-00	ITEM NO. FCF2M12	 TXGA Building Technology Cornerstone
	DESIGN UNITS METRIC	CHECKED BY GISELLE	DATE 14/Jun/24	TITLE M12 Female panel mount connector, unshielded, shield, IP68, PG9, front fastened		REV 0 SHEET NO. 3/3	
SCALE 1:1	SIZE A4	DRAWN BY King	DATE 14/Jun/24	THIS DRAWING CONTAINS INFORMATION THAT IS PROPRIETARY TO TXGA INDUSTRIAL ELECTRONICS(S.Z)CO.,LTD AND SHOULD NOT BE USED WITHOUT WRITTEN PERMISSION			