

A

B

C

D

E

F

A

B

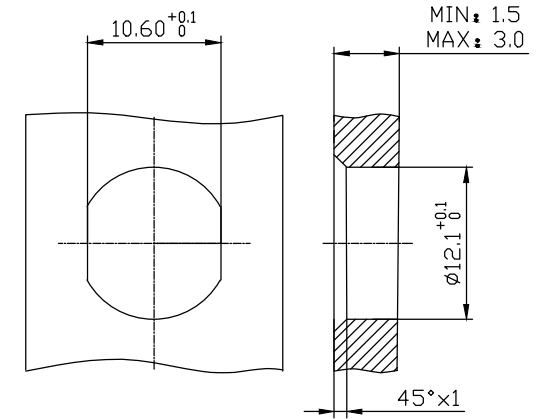
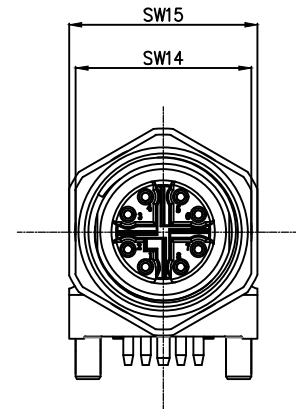
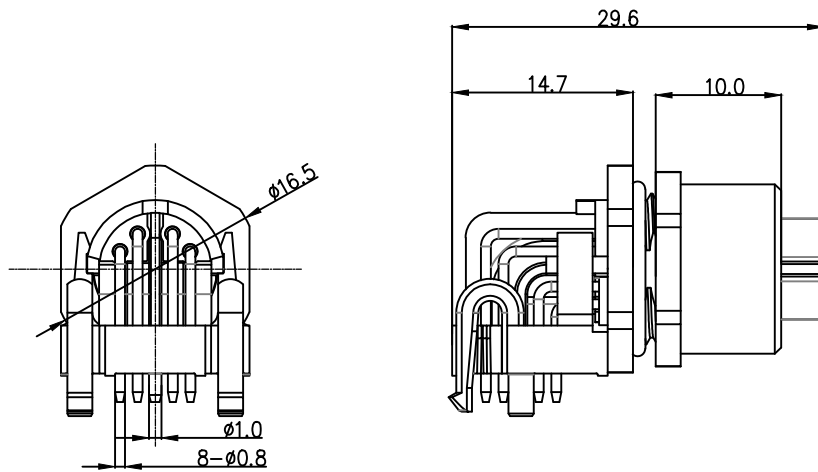
C

D

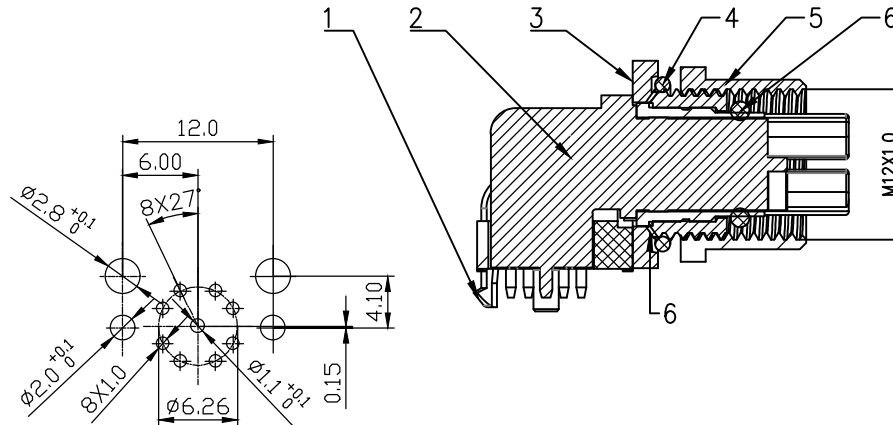
E

F

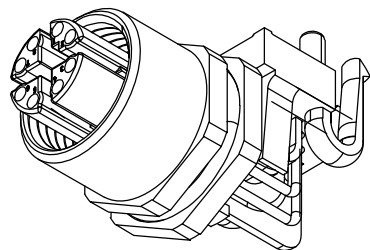
Pin No. Coded		REV		LOCATIONS		DESCRIPTION		DATE	REVISER	APPD
X-Coded										



Recommended Panel Cut-Out



8core PCB Distribution of plate opening positions



Note:

- 1.This product must meet: IEC61076-2-101
- 2.This product must meet 2011/65/EU ROHS compliance.
- 3.Not note tolerances:±0.20

7	M12-X encoded insulator	Connection method	Wave soldering
6	M12 Ripple Spring	Degree of protection	IP67(In mated condition)
5	M12- Outer shell	Mechanical operation	> 100 mating cycles
4	M12 sealing ring	Upper temperature	105°C
3	M12- Inner shell	Lower temperature	-40°C
2	M12-X encoding inner shell	Pollution degree	3
1	M12-X encoding positioning block	Overvoltage categorie	III
		Material group	II
		Material of contact	CuZn (Messing/brass)
		Contact plating	Au
		Material of contact body	PA
		Sealing	EPDM
		Material of housing	copper alloy

Pin Assignments Front View	Rated Voltage 50V(AC)/60V(DC)	Rated impulse Voltage 800V	Rated Current 0.5A	Contact resistance ≤3mΩ	Insulation resistance ≥100MΩ	Signal type classification CAT6,10Gbps
THIRD ANGLE PROJECTION	GENERAL TOLERANCES (UNLESS SPECIFIED)		APPROVE BY LED	DATE 04/Sep/24	PART NO. FCF3M12-SX08SRDS-00	ITEM NO. FCF3M12
	X. ±0.30	X.* ±5°	CHECKED BY GISELLE	DATE 04/Sep/24	TITLE M12-X coding female socket	
DESIGN UNITS METRIC	X.X ±0.20	X.X* ±2°	DRAWN BY King	DATE 04/Sep/24	THIS DRAWING CONTAINS INFORMATION THAT IS PROPRIETARY TO TXGA INDUSTRIAL ELECTRONICS(S.Z)CO.,LTD AND SHOULD NOT BE USED WITHOUT WRITTEN PERMISSION	
SCALE 1:1	X.XX ±0.15	X.XX* ±1°			REV 1 SHEET NO. 1/1	
	X.XXX ±0.10	X.XXX* ±0.5°				

TXGA

Building Technology Cornerstone