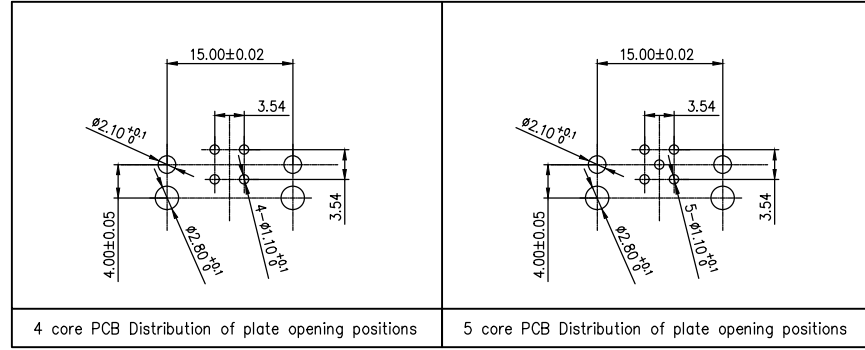
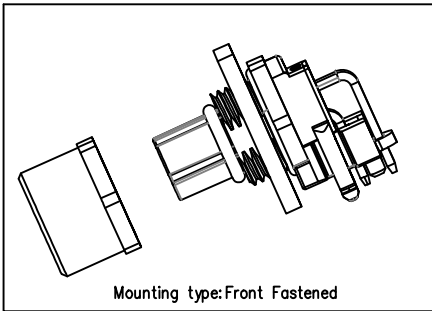
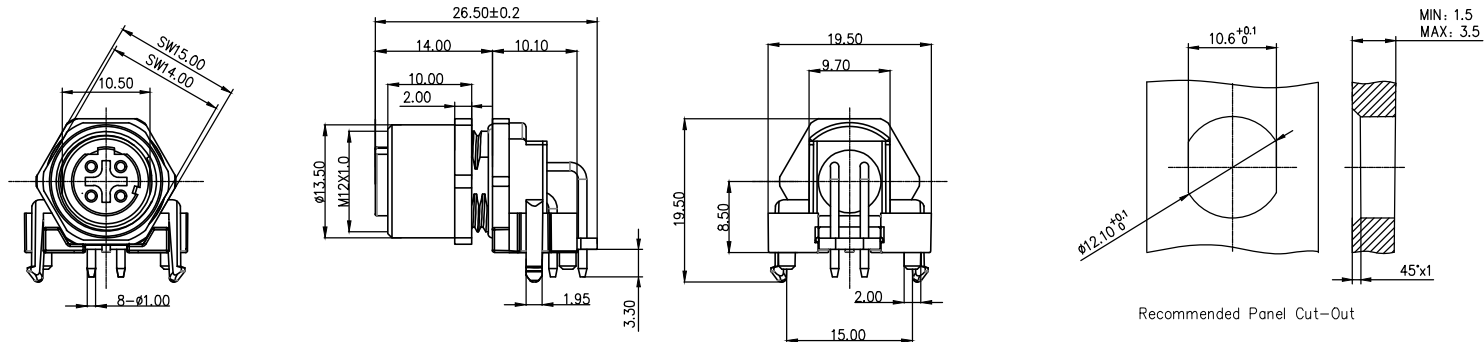


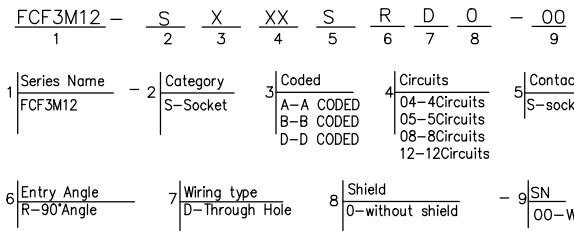
REV	LOCATIONS	DESCRIPTION	DATE	REVISER	APPD

Note:
 1.This product must meet IEC61076-2-101
 2.This product must meet 2011/65/EU ROHS compliance.



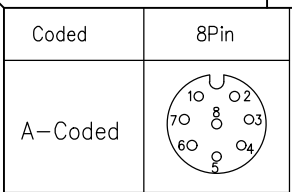
Installation Category	PCBinstall
Degree of protection	IP68(in mated condition)
Mechanical operation	> 100 mating cycles
Upper temperature	105°C
Lower temperature	-40°C
Pollution degree	3
Overtoltage categorie	II
Material group	II
Material of contact	CuZn (Messing/brass)
Contact plating	Au
Material of contact body	PA66
Sealing	EPDM
Material of housing	copper alloy

Ordering Information

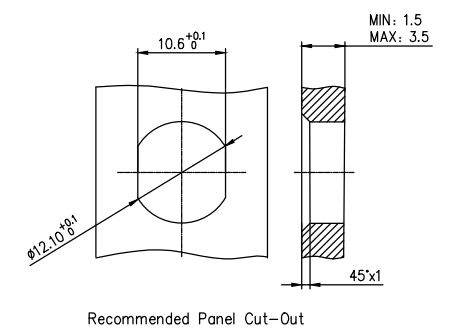
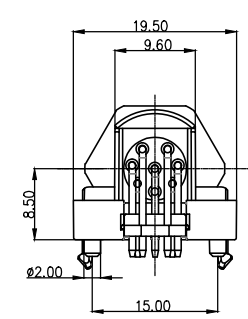
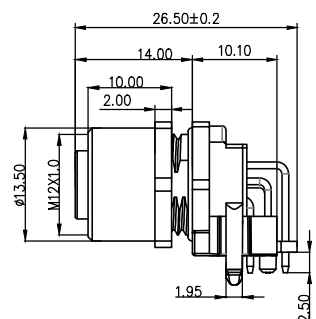
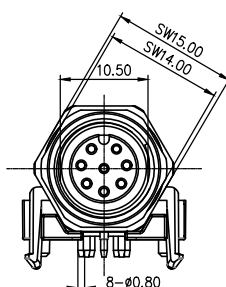
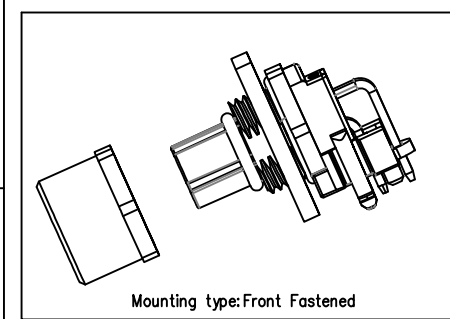


Pin Assignments Front View	Rated Voltage	Rated impulse Voltage	Rated Current	Contact resistance	Insulation resistance
	250V	2500V	4A	≤5mΩ	≥100MΩ
	60V	1500V	4A	≤5mΩ	≥100MΩ

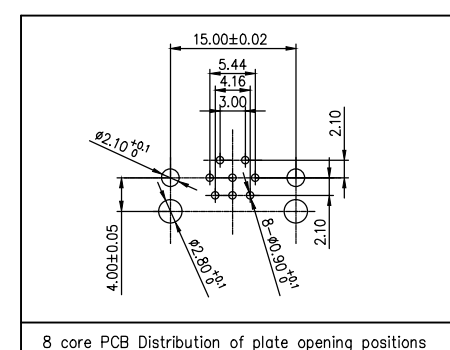
 THIRD ANGLE PROJECTION DESIGN UNITS METRIC SCALE 1:1 SIZE A4	GENERAL TOLERANCES (UNLESS SPECIFIED) X. ±0.30 X.* ±5° X.X ±0.20 X.X* ±2° X.XX ±0.15 X.XX* ±1° X.XXX ±0.10 X.XXX* ±0.5°		APPROVE BY LEO CHECKED BY GISELLE DRAWN BY King	DATE 14/JAN/25 DATE 14/JAN/25 DATE 14/JAN/25	PART NO. FCF3M12-SXXXSRD0-00 ITEM NO. FCF3M12	 Building Technology Cornerstone REV 0 SHEET NO. 1/3 THIS DRAWING CONTAINS INFORMATION THAT IS PROPRIETARY TO TXGA INDUSTRIAL ELECTRONICS(S.Z)CO.,LTD AND SHOULD NOT BE USED WITHOUT WRITTEN PERMISSION
	TITLE M12 female end elbow socket, unshielded, through-hole welded, IP68, Front lock, codes A, B, D, With flat position					



REV	LOCATIONS	DESCRIPTION	DATE	REVISER	APPD

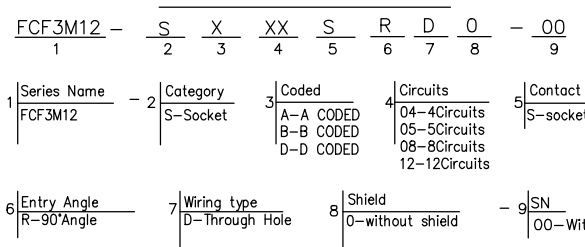


Note:
 1.This product must meet IEC61076-2-101
 2.This product must meet 2011/65/EU ROHS compliance.



Installation Category	PCBinstall
Degree of protection	IP68(in mated condition)
Mechanical operation	> 100 mating cycles
Upper temperature	105°C
Lower temperature	-40°C
Pollution degree	3
Overtoltage categorie	II
Material group	II
Material of contact	CuZn (Messing/brass)
Contact plating	Au
Material of contact body	PA66
Sealing	EPDM
Material of housing	copper alloy

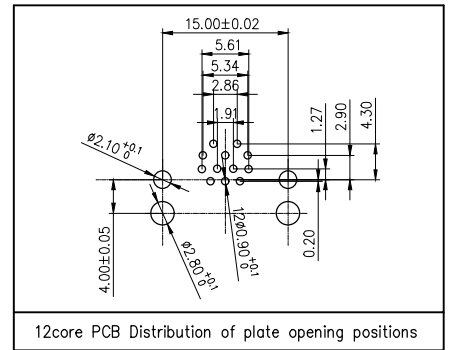
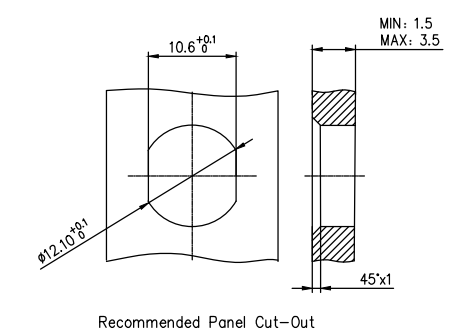
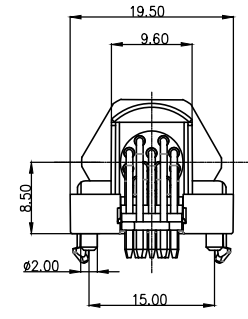
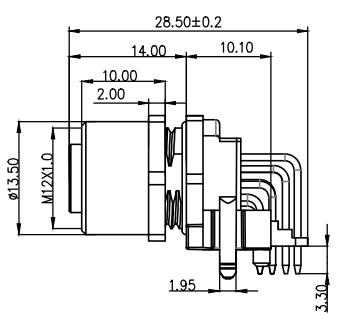
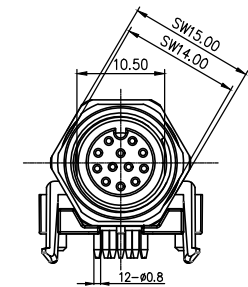
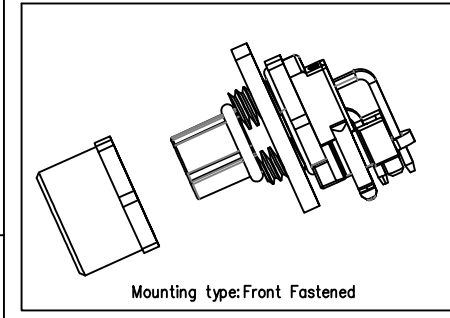
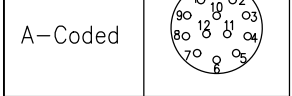
Ordering Information



Pin Assignments Front View	Rated Voltage	Rated impulse Voltage	Rated Current	Contact resistance	Insulation resistance
	30V	800V	2A	≤5mΩ	≥100MΩ

 THIRD ANGLE PROJECTION	GENERAL TOLERANCES (UNLESS SPECIFIED)		APPROVE BY LEO	DATE 14/JAN/25	PART NO. FCF3M12-SXXXSRD0-00	ITEM NO. FCF3M12	 Building Technology Cornerstone
	DESIGN UNITS METRIC	X. ±0.30	X.* ±5°	CHECKED BY GISELLE	DATE 14/JAN/25	TITLE M12 female end elbow socket, unshielded, through-hole welded, IP68, Front lock, codes A, B, D, With flat position	
SCALE 1:1	SIZE A4	X.XX ±0.15	X.XX* ±1°	DRAWN BY King	DATE 14/JAN/25	THIS DRAWING CONTAINS INFORMATION THAT IS PROPRIETARY TO TXGA INDUSTRIAL ELECTRONICS(S.Z)CO.,LTD AND SHOULD NOT BE USED WITHOUT WRITTEN PERMISSION REV 0 SHEET NO. 2/3	

1	2	3	4	5	6	7	8			
Coded	12Pin				REV	LOCATIONS	DESCRIPTION	DATE	REVISER	APPD



Note:
 1.This product must meet IEC61076-2-101
 2.This product must meet 2011/65/EU ROHS compliance.

Installation Category	PCBinstall
Degree of protection	IP68(in mated condition)
Mechanical operation	> 100 mating cycles
Upper temperature	105°C
Lower temperature	-40°C
Pollution degree	3
Overtoltage categorie	II
Material group	II
Material of contact	CuZn (Messing/brass)
Contact plating	Au
Material of contact body	PA66
Sealing	EPDM
Material of housing	alloy

Ordering Information

FCF3M12 - S X XX S R D O - 00
 1 2 3 4 5 6 7 8 9

1 Series Name FCF3M12
 2 Category S-socket
 3 Coded A-A CODED, B-B CODED, D-D CODED
 4 Circuits 04-4Circuits, 05-5Circuits, 08-8Circuits, 12-12Circuits
 5 Contact S-socket

6 Entry Angle R-90°Angle
 7 Wiring type D-Through Hole
 8 Shield 0-without shield
 9 SN 00-With flat position

Pin Assignments Front View	Rated Voltage	Rated impulse Voltage	Rated Current	Contact resistance	Insulation resistance
	30V	800V	1.5A	≤5mΩ	≥100MΩ

THIRD ANGLE PROJECTION	GENERAL TOLERANCES (UNLESS SPECIFIED)		APPROVE BY	DATE	PART NO.	ITEM NO.
	X.X ±0.30	X.* ±5°	LEO	14/JAN/25	FCF3M12-SXXXSRD0-00	FCF3M12
	X.X ±0.20	X.X* ±2°	CHECKED BY	DATE	TITLE	
	X.XX ±0.15	X.XX* ±1°	GISELLE	14/JAN/25	M12 female end elbow socket, unshielded, through-hole welded, IP68, Front lock, codes A, B, D, With flat position	
SCALE 1:1	SIZE A4	X.XXX ±0.10	X.XXX* ±0.5°	DRAWN BY King	DATE 14/JAN/25	THIS DRAWING CONTAINS INFORMATION THAT IS PROPRIETARY TO TXGA INDUSTRIAL ELECTRONICS(S.Z)CO.,LTD AND SHOULD NOT BE USED WITHOUT WRITTEN PERMISSION

TXGA
 Building Technology Cornerstone

REV 0 SHEET NO. 3/3