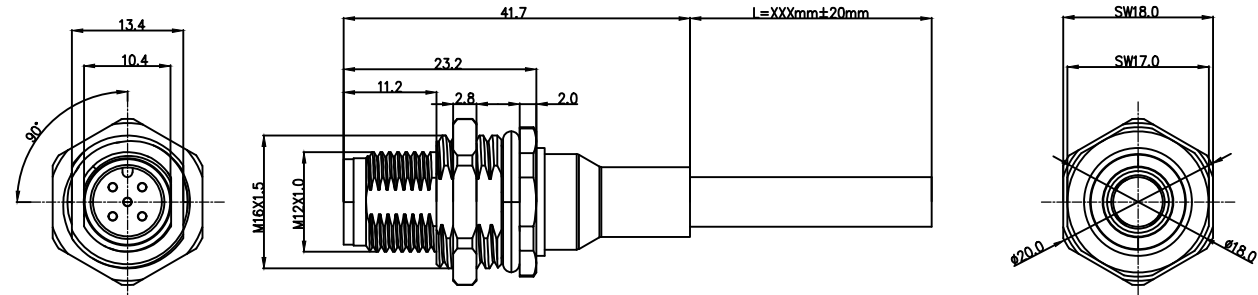


2~5PIN

REV	LOCATIONS	DESCRIPTION	DATE	REVISER	APPD

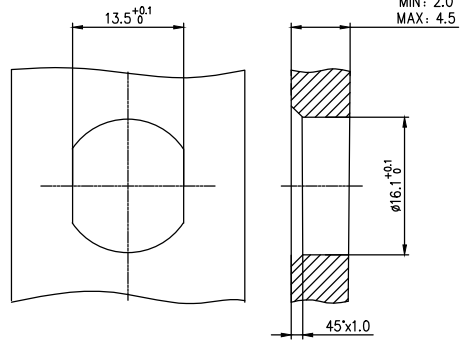
- Note:
1. Waterproof Rate: IP68
  2. This product must meet IEC61076-2-101
  3. This product must meet 2011/65/EU ROHS compliance.
  4. Not note tolerances: ±0.20
  5. working temperature: -40°C~105°C
  6. Mechanical operation: > 100 mating cycles



Ordering Information

FCF4M12 -  $\frac{S}{1}$   $\frac{X}{2}$   $\frac{XX}{3}$   $\frac{P}{4}$   $\frac{S}{5}$   $\frac{P}{6}$   $\frac{S}{7}$   $\frac{XXX}{8}$  -  $\frac{00}{9}$

1 Series Name FCF4M12	2 Category S- Socket	3 Coded A-A CODED B-B CODED D-D CODED	4 Circuits 02-2Circuits 03-3Circuits 04-4Circuits 05-5Circuits 06-6Circuits 07-7Circuits 08-8Circuits 09-9Circuits 10-10Circuits 11-11Circuits 12-12Circuits	5 Contact P-PIN
--------------------------	-------------------------	--	---	--------------------



Recommended Panel Cut-Out

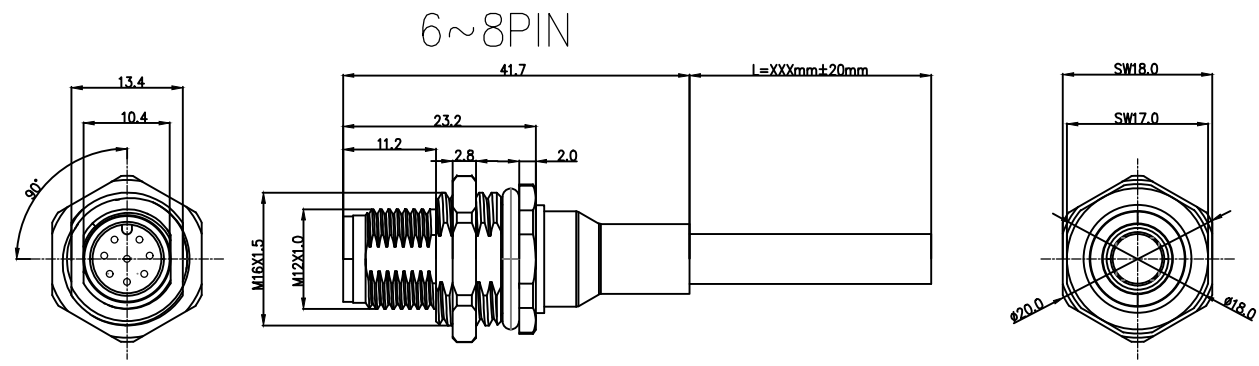
Pin Assignments Front View	Rated Voltage	Rated impulse Voltage	Rated Current	Insulation resistance	Cable diameter	Wire Sizemm <sup>2</sup> AWG
	250V	2500V	4A	≥100MΩ	4.5	0.34mm <sup>2</sup> /22AWG
	250V	2500V	4A	≥100MΩ	5.0	0.34mm <sup>2</sup> /22AWG
	250V	2500V	4A	≥100MΩ	5.5	0.34mm <sup>2</sup> /22AWG
	60V	1500V	4A	≥100MΩ	6.0	0.34mm <sup>2</sup> /22AWG

2Pin(A/B/D)		3Pin(A/B/D)		4Pin(A/B/D)		5Pin(A/B/D)	
	Shell-Shield		Shell-Shield		Shell-Shield		Shell-Shield
		4	Black	4	Black	5	gray
3	Blue	3	Blue	3	Blue	3	Blue
				2	White	2	White
1	Brown	1	Brown	1	Brown	1	Brown
pin	wire color	pin	wire color	pin	wire color	pin	wire color

6 Entry Angle S-180° Vertical	7 Wiring type P-Crimp	8 Shield S-shield	9 LENGTH 002-(200mm) 003-(200mm) ~ 010-(1.0m)	10 SN 00
----------------------------------	--------------------------	----------------------	---	-------------

 THIRD ANGLE PROJECTION	GENERAL TOLERANCES (UNLESS SPECIFIED)		APPROVE BY LEO	DATE 14/Jun/24	PART NO. FCF4M12-SXXXSPSXXX-00	ITEM NO. FCF4M12	 Building Technology Cornerstone
	X. ±0.30	X.* ±5'	CHECKED BY GISELLE	DATE 14/Jun/24	TITLE M12 male circular connector, shielded, with 0.5m cable, M16X1.5, front lock		
DESIGN UNITS METRIC	X.X ±0.20	X.X' ±2'	DRAWN BY King	DATE 14/Jun/24	THIS DRAWING CONTAINS INFORMATION THAT IS PROPRIETARY TO TXGA INDUSTRIAL ELECTRONICS(S.Z)CO.,LTD AND SHOULD NOT BE USED WITHOUT WRITTEN PERMISSION		REV 0 SHEET NO. 1/3
SCALE 1:1	SIZE A4	X.XX ±0.15	X.XX' ±1'				
		X.XXX ±0.10	X.XXX' ±0.5'				

1	2	3	4	5	6	7	8			
Coded	6Pin	7Pin	8Pin		REV	LOCATIONS	DESCRIPTION	DATE	REVISER	APPD
A-Coded										



- Note:
1. Waterproof Rate: IP68
  2. This product must meet IEC61076-2-101
  3. This product must meet 2011/65/EU ROHS compliance.
  4. Not note tolerances: ±0.20
  5. working temperature: -40°C~105°C
  6. Mechanical operation: > 100 mating cycles

Ordering Information

FCF4M12 -  $\frac{S}{1}$   $\frac{X}{3}$   $\frac{XX}{4}$   $\frac{P}{5}$   $\frac{S}{6}$   $\frac{S}{7}$   $\frac{S}{8}$   $\frac{XXX}{9}$  -  $\frac{00}{10}$

1 Series Name FCF4M12	2 Category S- Socket	3 Coded A-A CODED B-B CODED D-D CODED	4 Circuits 02-2Circuits 03-3Circuits 04-4Circuits 05-5Circuits 06-6Circuits 07-7Circuits 08-8Circuits 09-9Circuits 10-10Circuits 11-11Circuits 12-12Circuits	5 Contact P-PIN
--------------------------	-------------------------	--	---	--------------------

6 Entry Angle S-180° Vertical	7 Wiring type P-Crimp	8 Shield S-shield	9 LENGTH 002-(200mm) 003-(200mm) ~ 010-(1.0m)	10 SN 00
----------------------------------	--------------------------	----------------------	---	-------------

Recommended Panel Cut-Out

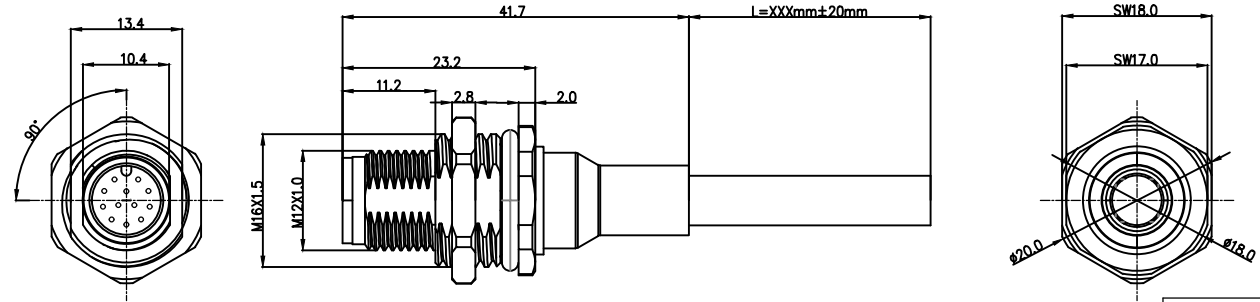
Pin Assignments Front View	Rated Voltage	Rated impulse Voltage	Rated Current	Insulation resistance	Cable diameter	Wire Sizemm <sup>2</sup> AWG
	30V	800V	2A	≥100MΩ	5.5	0.25mm <sup>2</sup> /24AWG
	30V	800V	2A	≥100MΩ	6.0	0.25mm <sup>2</sup> /24AWG
	30V	800V	2A	≥100MΩ	6.0	0.25mm <sup>2</sup> /24AWG

	6Pin	7Pin	8Pin
	Shell-Shield	Shell-Shield	Shell-Shield
			8 red
7	blue	7 blue	7 blue
6	pink	6 pink	6 pink
		5 gray	5 gray
4	yellow	4 yellow	4 yellow
3	green	3 green	3 green
2	brown	2 brown	2 brown
1	white	1 white	1 white
pin	wire color	pin wire color	pin wire color

 <b>THIRD ANGLE PROJECTION</b>	<b>GENERAL TOLERANCES (UNLESS SPECIFIED)</b> X. ±0.30 X.* ±5' X.X ±0.20 X.X* ±2' X.XX ±0.15 X.XX* ±1' X.XXX ±0.10 X.XXX* ±0.5'		<b>APPROVE BY</b> LEO	<b>DATE</b> 14/Jun/24	<b>PART NO.</b> FCF4M12-SXXXPSXXX-00	<b>ITEM NO.</b> FCF4M12	 <b>TXGA</b> Building Technology Cornerstone
	<b>DESIGN UNITS METRIC</b>		<b>CHECKED BY</b> GISELLE	<b>DATE</b> 14/Jun/24	<b>TITLE</b> M12 male circular connector, shielded, with 0.5m cable, M16X1.5, front lock	REV 0 SHEET NO. 2/3	
	<b>SCALE</b> 1:1	<b>SIZE</b> A4	<b>DRAWN BY</b> King	<b>DATE</b> 14/Jun/24	<b>THIS DRAWING CONTAINS INFORMATION THAT IS PROPRIETARY TO TXGA INDUSTRIAL ELECTRONICS(S.Z)CO.,LTD AND SHOULD NOT BE USED WITHOUT WRITTEN PERMISSION</b>		

1	2	3	4	5	6	7	8			
Coded	9Pin	10Pin	11Pin	12Pin	REV	LOCATIONS	DESCRIPTION	DATE	REVISER	APPD
A-Coded										

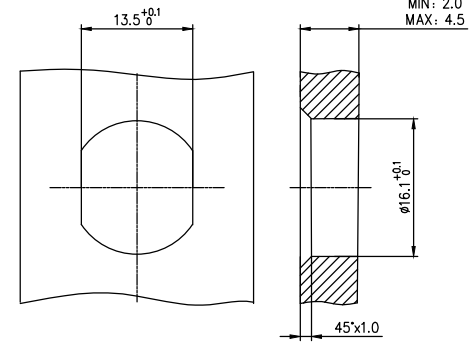
9~12PIN



- Note:
1. Waterproof Rate: IP68
  2. This product must meet IEC61076-2-101
  3. This product must meet 2011/65/EU ROHS compliance.
  4. Not note tolerances: ±0.20
  5. working temperature: -40°C~105°C
  6. Mechanical operation: > 100 mating cycles

Pin Assignments Front View	Rated Voltage	Rated impulse Voltage	Rated Current	Insulation resistance	Cable diameter	Wire Sizemm <sup>2</sup> AWG
	30V	800V	1.5A	≥100MΩ	6.0	0.14mm <sup>2</sup> /26AWG
	30V	800V	1.5A	≥100MΩ	6.0	0.14mm <sup>2</sup> /26AWG
	30V	800V	1.5A	≥100MΩ	6.5	0.14mm <sup>2</sup> /26AWG
	30V	800V	1.5A	≥100MΩ	6.5	0.14mm <sup>2</sup> /26AWG

9Pin	10Pin	11Pin	12Pin
Shell-Shield	Shell-Shield	Shell-Shield	Shell-Shield
			12 red/white
		11 yellow/green	11 yellow/green
9 red	9 purple	10 purple	10 purple
8 gray	8 red	9 red	9 red
7 black	7 gray	8 gray	8 gray
6 yellow	6 black	7 black	7 black
5 pink	6 yellow	6 yellow	6 yellow
4 green	5 pink	5 pink	5 pink
3 white	4 green	4 green	4 green
2 blue	3 white	3 white	3 white
1 brown	2 blue	2 blue	2 blue
pin	1 brown	1 brown	1 brown
wire color	pin	wire color	pin
pin	wire color	pin	wire color



Recommended Panel Cut-Out

Ordering Information

FCF4M12 - S X XX P S P S XXX - 00  
 1 2 3 4 5 6 7 8 9 10

1 Series Name FCF4M12	2 Category S-Socket	3 Coded A-A CODED B-B CODED D-D CODED	4 Circuits 02-2Circuits 03-3Circuits 04-4Circuits 05-5Circuits 06-6Circuits 07-7Circuits 08-8Circuits 09-9Circuits 10-10Circuits 11-11Circuits 12-12Circuits	5 Contact P-PIN
--------------------------	------------------------	--	---	--------------------

6 Entry Angle S-180° Vertical	7 Wiring type P-Crimp	8 Shield S-shield	9 LENGTH 002-(200mm) 003-(200mm) ~ 010-(1.0m)	10 SN 00
----------------------------------	--------------------------	----------------------	---	-------------

 <b>THIRD ANGLE PROJECTION</b>	<b>GENERAL TOLERANCES (UNLESS SPECIFIED)</b> X. ±0.30 X.* ±5' X.X ±0.20 X.X' ±2' X.XX ±0.15 X.XX' ±1' X.XXX ±0.10 X.XXX' ±0.5'		<b>APPROVE BY</b> LEO	<b>DATE</b> 14/Jun/24	<b>PART NO.</b> FCF4M12-SXXXSPSXXX-00	<b>ITEM NO.</b> FCF4M12	 <b>TXGA</b> Building Technology Cornerstone
	<b>DESIGN UNITS METRIC</b>	<b>CHECKED BY</b> GISELLE	<b>DATE</b> 14/Jun/24	<b>TITLE</b> M12 male circular connector, shielded, with 0.5m cable, M16X1.5, front lock		REV 0	
<b>SCALE</b> 1:1	<b>SIZE</b> A4	<b>DRAWN BY</b> King	<b>DATE</b> 14/Jun/24	<b>THIS DRAWING CONTAINS INFORMATION THAT IS PROPRIETARY TO TXGA INDUSTRIAL ELECTRONICS(S.Z)CO.,LTD AND SHOULD NOT BE USED WITHOUT WRITTEN PERMISSION</b>			