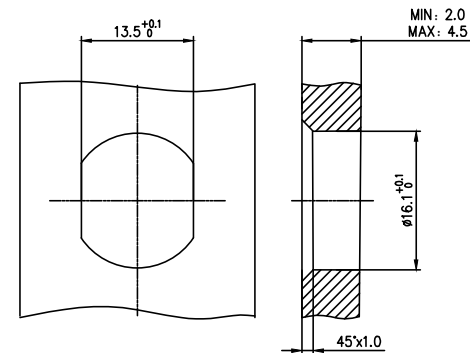
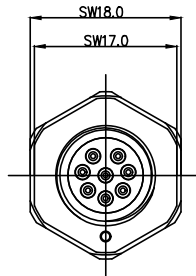
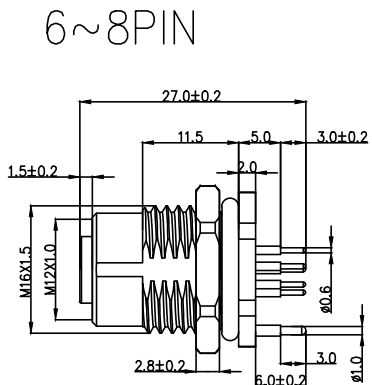
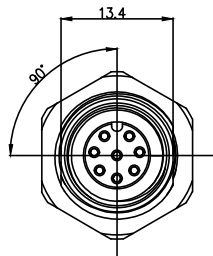
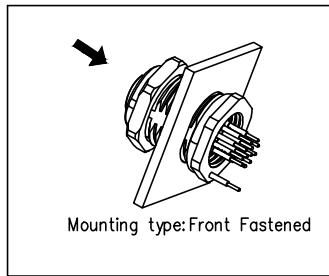


1	2	3	4	5	6	7	8			
Coded	6Pin	7Pin	8Pin		REV	LOCATIONS	DESCRIPTION	DATE	REVISER	APPD
A-Coded										



Recommended Panel Cut-Out

Note:
 1.This product must meet IEC61076-2-101
 2.This product must meet 2011/65/EU ROHS compliance.

Ordering Information

FCF4M12 - $\frac{S}{1}$ $\frac{X}{2}$ $\frac{XX}{3}$ $\frac{S}{4}$ $\frac{S}{5}$ $\frac{D}{6}$ $\frac{S}{7}$ $\frac{S}{8}$ - $\frac{00}{9}$

1 Series Name - 2 Category - 3 Coded - 4 Circuits - 5 Contact
 FCF4M12-M16X1.5 S-Socket A-A CODED B-B CODED D-D CODED
 02-2Circuits 03-3Circuits 04-4Circuits 05-5Circuits 06-6Circuits 07-7Circuits 08-8Circuits 09-9Circuits 10-10Circuits 11-11Circuits 12-12Circuits 16-16Circuits 17-17Circuits

6 Entry Angle - 7 Wiring type - 8 Shield - 9 SN
 S-180° Vertical D-Through Hole S-Shielded SN-00

Pin Assignments Front View	Rated Voltage	Rated impulse Voltage	Rated Current	Contact resistance	Insulation resistance
	30V	800V	2A	≤5mΩ	≥100MΩ
	30V	800V	2A	≤5mΩ	≥100MΩ
	30V	800V	2A	≤5mΩ	≥100MΩ

Installation Category	PCBinstall
Degree of protection	IP68(in mated condition)
Mechanical operation	> 100 mating cycles
Upper temperature	105°C
Lower temperature	-40°C
Pollution degree	3
Overtoltage categorie	II
Material group	II
Material of contact	CuZn (Messing/brass)
Contact plating	Au
Material of contact body	PA66
Sealing	EPDM
Material of housing	copper alloy

THIRD ANGLE PROJECTION	GENERAL TOLERANCES (UNLESS SPECIFIED)		APPROVE BY	DATE	PART NO.	ITEM NO.	 Building Technology Cornerstone
	X. ±0.30	X.* ±5°	LEO	06/Feb/25	FCF4M12-SXXXSSDS-00	FCF4M12	
DESIGN UNITS METRIC	X.X ±0.20	X.X* ±2°	CHECKED BY	DATE	TITLE		REV 0 SHEET NO. 2/5 THIS DRAWING CONTAINS INFORMATION THAT IS PROPRIETARY TO TXGA INDUSTRIAL ELECTRONICS(S.Z)CO.,LTD AND SHOULD NOT BE USED WITHOUT WRITTEN PERMISSION
	X.XX ±0.15	X.XX* ±1°	GISELLE	06/Feb/25	M12 female socket, shielded, 2~17 core, M16X1.5, front lock, codes A/B/D		
SCALE 1:1	SIZE A4	X.XXX ±0.10	X.XXX* ±0.5°	DRAWN BY King	DATE 06/Feb/25		

