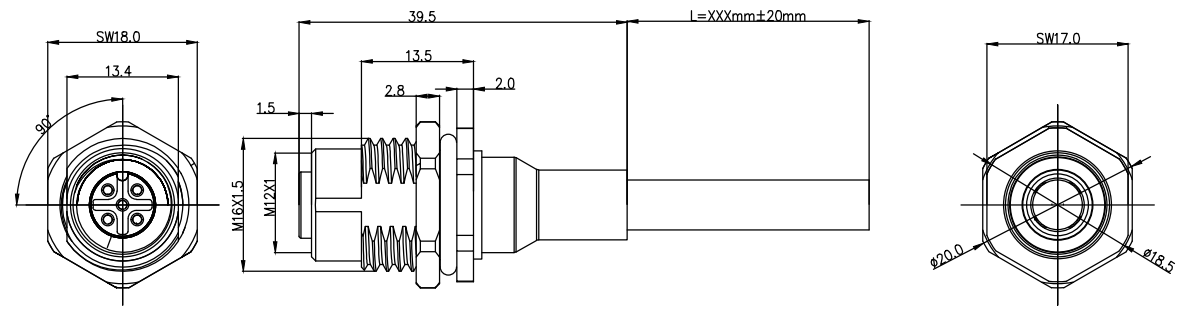


	1	2	3	4	5	6	7	8
Coded	2Pin	3Pin	4Pin	5Pin				
A-Coded								
B-Coded								
D-Coded								

REV	LOCATIONS	DESCRIPTION	DATE	REVISER	APPD

2~5PIN

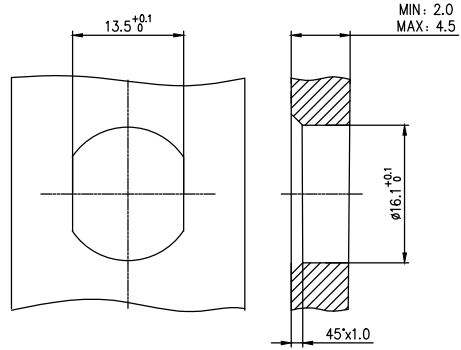


- Note:
1. Waterproof Rate: IP68
 2. This product must meet IEC61076-2-101
 3. This product must meet 2011/65/EU ROHS compliance.
 4. Not note tolerances: ± 0.20
 5. working temperature: $-40^{\circ}\text{C} \sim 105^{\circ}\text{C}$
 6. Mechanical operation: > 100 mating cycles

Ordering Information

FCF4M12 - $\frac{S}{1}$ $\frac{X}{2}$ $\frac{XX}{3}$ $\frac{S}{4}$ $\frac{S}{5}$ $\frac{P}{6}$ $\frac{S}{7}$ $\frac{XXX}{8}$ - $\frac{00}{10}$

1 Series Name FCF4M12	2 Category S-socket	3 Coded A-A CODED B-B CODED D-D CODED	4 Circuits 02-2Circuits 03-3Circuits 04-4Circuits 05-5Circuits 06-6Circuits 07-7Circuits 08-8Circuits 09-9Circuits 10-10Circuits 11-11Circuits 12-12Circuits	5 Contact S-socket
--------------------------	------------------------	--	---	-----------------------



Recommended Panel Cut-Out

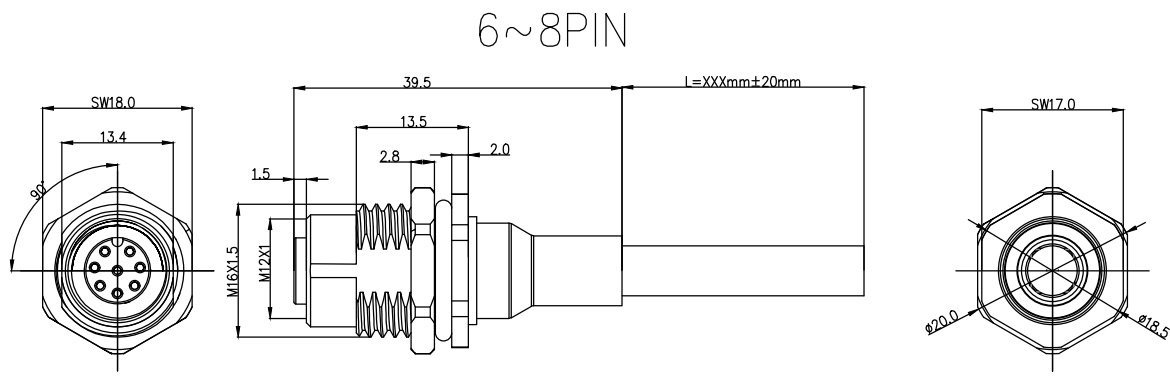
Pin Assignments Front View	Rated Voltage	Rated impulse Voltage	Rated Current	Insulation resistance	Cable diameter	Wire Sizemm ² AWG
	250V	2500V	4A	$\geq 100\text{M}\Omega$	4.5	0.34mm ² /22AWG
	250V	2500V	4A	$\geq 100\text{M}\Omega$	5.0	0.34mm ² /22AWG
	250V	2500V	4A	$\geq 100\text{M}\Omega$	5.5	0.34mm ² /22AWG
	60V	1500V	4A	$\geq 100\text{M}\Omega$	6.0	0.34mm ² /22AWG

2Pin(A/B/D)		3Pin(A/B/D)		4Pin(A/B/D)		5Pin(A/B/D)	
	Shell-Shield		Shell-Shield		Shell-Shield		Shell-Shield
						5	gray
		4	Black	4	Black	4	Black
3	Blue	3	Blue	3	Blue	3	Blue
				2	White	2	White
1	Brown	1	Brown	1	Brown	1	Brown
pin	wire color	pin	wire color	pin	wire color	pin	wire color

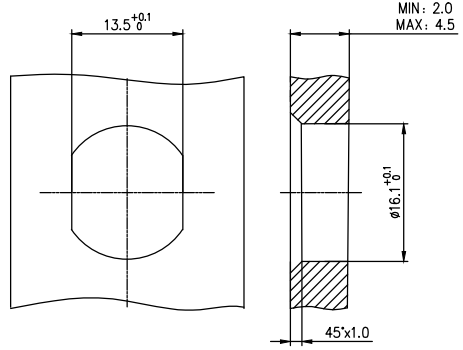
6 Entry Angle S-180° Vertical	7 Wiring type P-Crimp	8 Shield S-shield	9 LENGTH 002-(200mm) 003-(200mm) ~ 010-(1.0m)	10 SN 00
----------------------------------	--------------------------	----------------------	---	-------------

 THIRD ANGLE PROJECTION	GENERAL TOLERANCES (UNLESS SPECIFIED) X. ± 0.30 X.' $\pm 5'$ X.X ± 0.20 X.X' $\pm 2'$ X.XX ± 0.15 X.XX' $\pm 1'$ X.XXX ± 0.10 X.XXX' $\pm 0.5'$		APPROVE BY LEO	DATE 14/Jun/24	PART NO. FCF4M12-SXXXSSPSXXX-00	ITEM NO. FCF4M12	 TXGA Building Technology Cornerstone
	DESIGN UNITS METRIC	SCALE 1:1	SIZE A4	CHECKED BY GISELLE	DATE 14/Jun/24	TITLE M12 Female panel mount connector, unshielded, shield, IP68, M16X1.5, front fastened	
THIS DRAWING CONTAINS INFORMATION THAT IS PROPRIETARY TO TXGA INDUSTRIAL ELECTRONICS(S.Z)CO.,LTD AND SHOULD NOT BE USED WITHOUT WRITTEN PERMISSION							

1	2	3	4	5	6	7	8			
Coded	6Pin	7Pin	8Pin		REV	LOCATIONS	DESCRIPTION	DATE	REVISER	APPD
A-Coded										



Note:
 1. Waterproof Rate: IP68
 2. This product must meet IEC61076-2-101
 3. This product must meet 2011/65/EU ROHS compliance.
 4. Not note tolerances: ±0.20
 5. working temperature: -40°C~105°C
 6. Mechanical operation: > 100 mating cycles



Ordering Information

FCF4M12 - $\frac{S}{1}$ - $\frac{X}{2}$ - $\frac{XX}{3}$ - $\frac{S}{4}$ - $\frac{S}{5}$ - $\frac{P}{6}$ - $\frac{S}{7}$ - $\frac{S}{8}$ - $\frac{XXX}{9}$ - $\frac{00}{10}$

1 | Series Name | 2 | Category | 3 | Coded | 4 | Circuits | 5 | Contact
 FCF4M12 | S-socket | A-A CODED | 02-2Circuits | S-socket
 B-B CODED | 03-3Circuits
 D-D CODED | 04-4Circuits
 05-5Circuits
 06-6Circuits
 07-7Circuits
 08-8Circuits
 09-9Circuits
 10-10Circuits
 11-11Circuits
 12-12Circuits

6 | Entry Angle | 7 | Wiring type | 8 | Shield | 9 | LENGTH | 10 | SN
 S-180° Vertical | P-Crimp | S-shield | 002-(200mm) | 00
 003-(200mm)
 010-(1.0m)

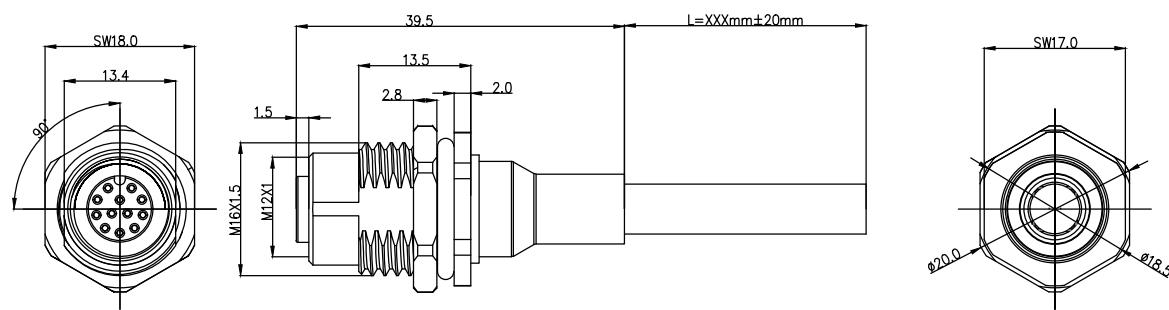
	6Pin	7Pin	8Pin
	Shell-Shield	Shell-Shield	Shell-Shield
			8 red
7	blue	7 blue	7 blue
6	pink	6 pink	6 pink
		5 gray	5 gray
4	yellow	4 yellow	4 yellow
3	green	3 green	3 green
2	brown	2 brown	2 brown
1	white	1 white	1 white
pin	wire color	pin wire color	pin wire color

Pin Assignments Front View	Rated Voltage	Rated impulse Voltage	Rated Current	Insulation resistance	Cable diameter	Wire Sizemm ² AWG
	30V	800V	2A	≥100MΩ	5.5	0.25mm ² /24AWG
	30V	800V	2A	≥100MΩ	6.0	0.25mm ² /24AWG
	30V	800V	2A	≥100MΩ	6.0	0.25mm ² /24AWG

 THIRD ANGLE PROJECTION	GENERAL TOLERANCES (UNLESS SPECIFIED) X. ±0.30 X.* ±5' X.X ±0.20 X.X* ±2' X.XX ±0.15 X.XX* ±1' X.XXX ±0.10 X.XXX* ±0.5'		APPROVE BY LEO	DATE 14/Jun/24	PART NO. FCF4M12-SXXXSSPSXXX-00	ITEM NO. FCF4M12	 TXGA Building Technology Cornerstone
	DESIGN UNITS METRIC	CHECKED BY GISELLE	DATE 14/Jun/24	TITLE M12 Female panel mount connector, unshielded, shield, IP68, M16X1.5, front fastened	REV 0	SHEET NO. 2/3	
	SCALE 1:1	SIZE A4	DRAWN BY King	DATE 14/Jun/24	THIS DRAWING CONTAINS INFORMATION THAT IS PROPRIETARY TO TXGA INDUSTRIAL ELECTRONICS(S.Z)CO.,LTD AND SHOULD NOT BE USED WITHOUT WRITTEN PERMISSION		

1	2	3	4	5	6	7	8			
Coded	9Pin	10Pin	11Pin	12Pin	REV	LOCATIONS	DESCRIPTION	DATE	REVISER	APPD
A-Coded										

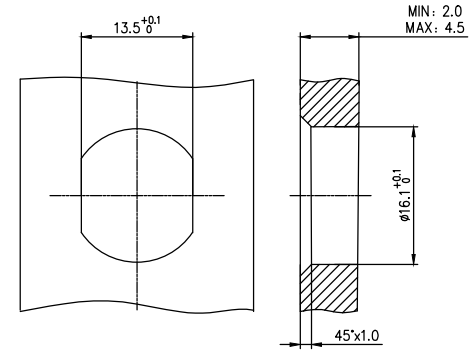
9~12PIN



- Note:
1. Waterproof Rate: IP68
 2. This product must meet IEC61076-2-101
 3. This product must meet 2011/65/EU ROHS compliance.
 4. Not note tolerances: ±0.20
 5. working temperature: -40°C~105°C
 6. Mechanical operation: > 100 mating cycles

Pin Assignments Front View	Rated Voltage	Rated impulse Voltage	Rated Current	Insulation resistance	Cable diameter	Wire Sizemm ² AWG
	30V	800V	1.5A	≥100MΩ	6.0	0.14mm ² /26AWG
	30V	800V	1.5A	≥100MΩ	6.0	0.14mm ² /26AWG
	30V	800V	1.5A	≥100MΩ	6.5	0.14mm ² /26AWG
	30V	800V	1.5A	≥100MΩ	6.5	0.14mm ² /26AWG

9Pin	10Pin	11Pin	12Pin
Shell-Shield	Shell-Shield	Shell-Shield	Shell-Shield
			12 red/white
		11 yellow/green	11 yellow/green
9 red	9 red	10 purple	10 purple
8 gray	8 gray	9 red	9 red
7 black	7 black	8 gray	8 gray
6 yellow	6 yellow	7 black	7 black
5 pink	5 pink	6 yellow	6 yellow
4 green	4 green	5 pink	5 pink
3 white	3 white	4 green	4 green
2 blue	2 blue	3 white	3 white
1 brown	1 brown	2 blue	2 blue
pin	wire color	pin	wire color



Recommended Panel Cut-Out

Ordering Information

FCF4M12 - $\frac{S}{1}$ $\frac{X}{2}$ $\frac{XX}{3}$ $\frac{S}{4}$ $\frac{S}{5}$ $\frac{P}{6}$ $\frac{S}{7}$ $\frac{S}{8}$ $\frac{XXX}{9}$ - $\frac{00}{10}$

- | | | | | |
|--------------------------|------------------------|--|---|-----------------------|
| 1 Series Name
FCF4M12 | 2 Category
S-socket | 3 Coded
A-A CODED
B-B CODED
D-D CODED | 4 Circuits
02-2Circuits
03-3Circuits
04-4Circuits
05-5Circuits
06-6Circuits
07-7Circuits
08-8Circuits
09-9Circuits
10-10Circuits
11-11Circuits
12-12Circuits | 5 Contact
S-socket |
|--------------------------|------------------------|--|---|-----------------------|

- | | | | | |
|----------------------------------|--------------------------|----------------------|---|-------------|
| 6 Entry Angle
S-180° Vertical | 7 Wiring type
P-Crimp | 8 Shield
S-shield | 9 LENGTH
002-(200mm)
003-(200mm)
~
010-(1.0m) | 10 SN
00 |
|----------------------------------|--------------------------|----------------------|---|-------------|

 THIRD ANGLE PROJECTION	GENERAL TOLERANCES (UNLESS SPECIFIED) X. ±0.30 X.* ±5' X.X ±0.20 X.X' ±2' X.XX ±0.15 X.XX' ±1' X.XXX ±0.10 X.XXX' ±0.5'		APPROVE BY LEO	DATE 14/Jun/24	PART NO. FCF4M12-SXXXSSPSXXX-00	ITEM NO. FCF4M12	 TXGA Building Technology Cornerstone
	DESIGN UNITS METRIC	CHECKED BY GISELLE	DATE 14/Jun/24	TITLE M12 Female panel mount connector, unshielded, shield, IP68, M16X1.5, front fastened	REV 0	SHEET NO. 3/3	
SCALE 1:1	SIZE A4	DRAWN BY King	DATE 14/Jun/24	THIS DRAWING CONTAINS INFORMATION THAT IS PROPRIETARY TO TXGA INDUSTRIAL ELECTRONICS(S.Z)CO.,LTD AND SHOULD NOT BE USED WITHOUT WRITTEN PERMISSION			