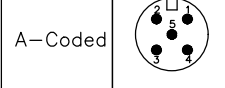
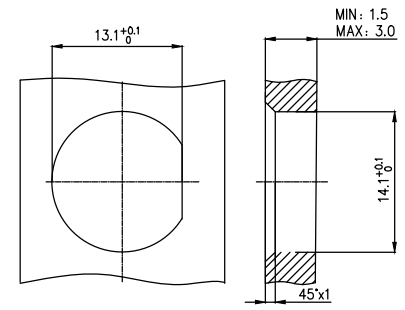
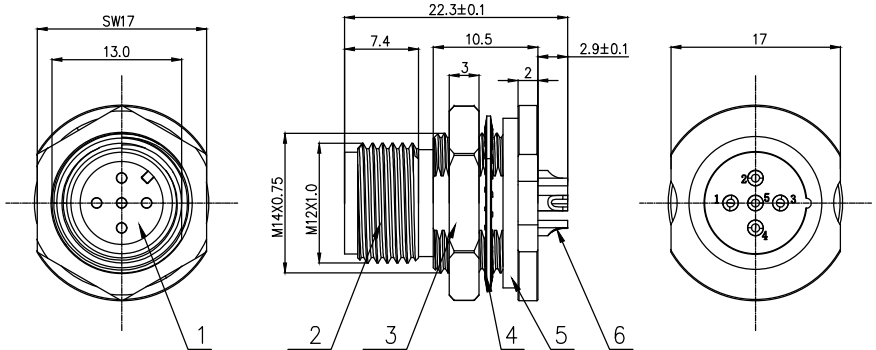
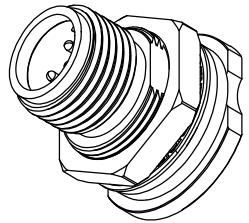


1	2	3	4	5	6	7	8			
Coded	5Pin				REV	LOCATIONS	DESCRIPTION	DATE	REVISER	APPD



- Note:
1. Waterproof Rate: IP67(When matched with each other)
 2. Not note tolerances: ± 0.20
 3. working temperature: $-40^{\circ}\text{C} \sim 105^{\circ}\text{C}$
 4. Mechanical operation: > 100 mating cycles



Recommended Panel Cut-Out

Degree of protection	IP67 (when compatible)
Mechanical operation	> 100 mating cycles
Upper temperature	105°C
Lower temperature	-40°C
Pollution degree	3
Overvoltage categorie	II
Material group	II
Material of contact	CuZn
Contact plating	Au
Material of housing	copper alloy

Ordering Information

1	2	3	4	5	6	7	8	9
Series Name	Category	Coded	Circuits	Contact	Entry Angle	Wiring type	Shield	SN
FCF7M12-M14X0.75	S-socket	A-A CODED	05-5Circuits	P-pin	S-180° Vertical	W-Soldering	0-without shield	00

6	5-core male terminal
5	White plastic gasket
4	M14X0.5 stop washer
3	M14X0.75 nut
2	M12 Copper Alloy Shell
1	M12-5pin A-Coded male rubber core

Pin Assignments Front View	Rated Voltage	Rated impulse Voltage	Rated Current	Contact resistance	Insulation resistance
	125V(DC)	1500V	3A	$\leq 5\text{m}\Omega$	$\geq 100\text{M}\Omega$

 THIRD ANGLE PROJECTION	GENERAL TOLERANCES (UNLESS SPECIFIED)		APPROVE BY LEO	DATE 11/SEP/24	PART NO. FCF7M12-SA05PSW0-00	ITEM NO. FCF7M12	 Building Technology Cornerstone	
	DESIGN UNITS METRIC	X. ± 0.30 X.X ± 0.20 X.XX ± 0.15 X.XXX ± 0.10	X.' $\pm 5'$ X.X' $\pm 2'$ X.XX' $\pm 1'$ X.XXX' $\pm 0.5'$	CHECKED BY GISELLE	DATE 11/SEP/24	TITLE M12 male circular connector, unshielded, 5-core, A code IP67, M14X0.75, front lock		REV 0
SCALE 1:1	SIZE A4	DRAWN BY King		DATE 11/SEP/24	THIS DRAWING CONTAINS INFORMATION THAT IS PROPRIETARY TO TXGA INDUSTRIAL ELECTRONICS(S.Z)CO.,LTD AND SHOULD NOT BE USED WITHOUT WRITTEN PERMISSION			