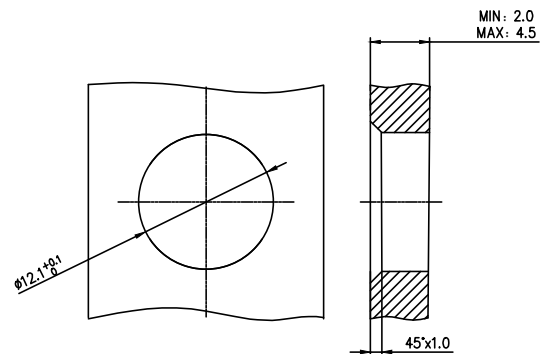
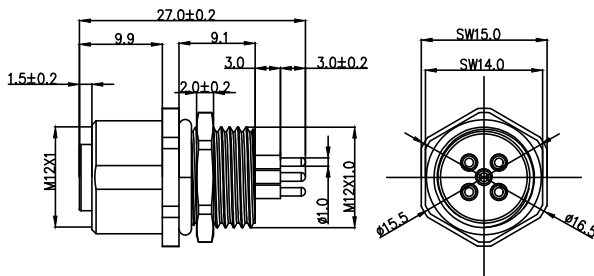
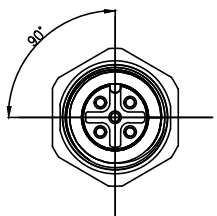
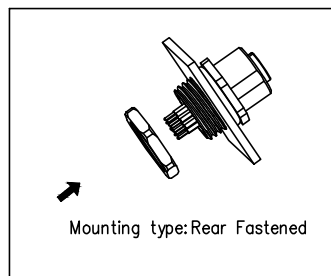


	1	2	3	4	5	6	7	8
	Coded	2Pin	3Pin	4Pin	5Pin			
A	A-Coded							
	B-Coded							
	D-Coded							

REV	LOCATIONS	DESCRIPTION	DATE	REVISER	APPD
REV 1		Modify PCB hole orientation	20/Jan/25	King	LEO
REV 2		1.Added 16/17 core products 2.PCB hole size adjustment annotation method	06/Feb/25	King	LEO

2~5PIN



Recommended Panel Cut-Out

- Note:
- 1.Waterproof Rate:IP68
 - 2.This product must meet IEC61076-2-101
 - 3.This product must meet 2011/65/EU ROHS compliance.
 - 4.Not note tolerances:±0.20

Installation Category	PCBinstall
Degree of protection	IP68(in mated condition)
Mechanical operation	> 100 mating cycles
Upper temperature	105°C
Lower temperature	-40°C
Pollution degree	3
Overvoltage categorie	II
Material group	II
Material of contact	CuZn (Messing/brass)
Contact plating	Au
Material of contact body	PA66
Sealing	EPDM
Material of housing	copper alloy

Ordering Information

FCR2M12 - -

1 2 3 4 5 6 7 8 9

1 Series Name FCR2M12-M12X1.0	2 Category S-Socket	3 Coded A-A CODED B-B CODED D-D CODED	4 Circuits 02-2Circuits 03-3Circuits 04-4Circuits 05-5Circuits 06-6Circuits 07-7Circuits 08-8Circuits 09-9Circuits 10-10Circuits 11-11Circuits 12-12Circuits	5 Contact S-socket
----------------------------------	------------------------	--	---	-----------------------

6 Entry Angle
S-180° Vertical

7 Wiring type
D-Through Hole

8 Shield
0-without shield

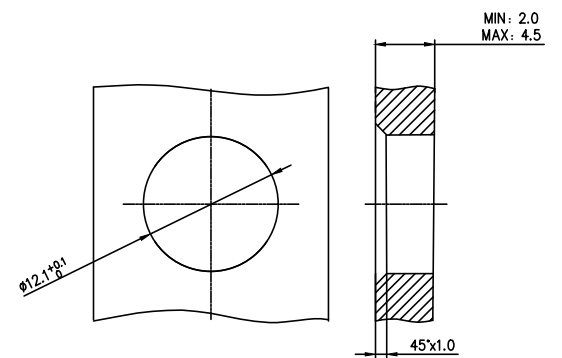
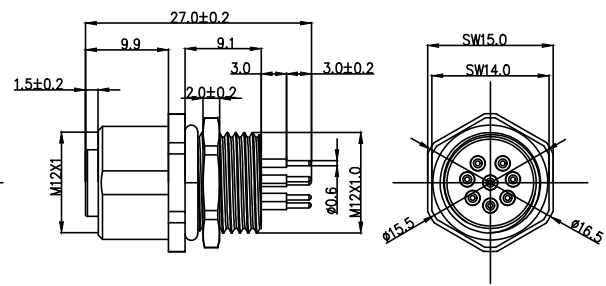
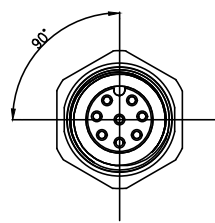
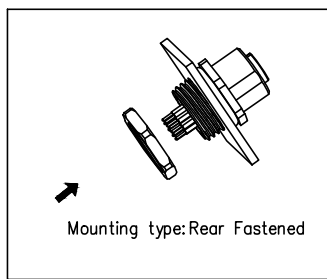
9 SN
00

Pin Assignments Front View	Rated Voltage	Rated impulse Voltage	Rated Current	Contact resistance	Insulation resistance
	250V	2500V	4A	≤5mΩ	≥100MΩ
	250V	2500V	4A	≤5mΩ	≥100MΩ
	250V	2500V	4A	≤5mΩ	≥100MΩ
	60V	1500V	4A	≤5mΩ	≥100MΩ

THIRD ANGLE PROJECTION	GENERAL TOLERANCES (UNLESS SPECIFIED)		APPROVE BY LEO	DATE 20/Jan/25	PART NO. FCR2M12-SXXXSSD0-00	ITEM NO. FCR2M12	 Building Technology Cornerstone
	DESIGN UNITS METRIC	X. ±0.30	X.* ±5°	CHECKED BY GISELLE	DATE 20/Jan/25	TITLE M12 female socket, unshielded, 2~17 core, M12X1.0, rear lock, codes A/B/D	
SCALE 1:1	SIZE A4	X.XX ±0.15	X.XX' ±1°	DRAWN BY King	DATE 20/Jan/25	THIS DRAWING CONTAINS INFORMATION THAT IS PROPRIETARY TO TXGA INDUSTRIAL ELECTRONICS(S.Z)CO.,LTD AND SHOULD NOT BE USED WITHOUT WRITTEN PERMISSION	REV 2 SHEET NO. 1/5

Coded	6Pin	7Pin	8Pin		REV	LOCATIONS	DESCRIPTION	DATE	REVISER	APPD
A-Coded					REV 1		Modify PCB hole orientation	20/Jan/25	King	LEO
					REV 2		1.Added 16/17 core products 2.PCB hole size adjustment annotation method	06/Feb/25	King	LEO

6~8PIN



Recommended Panel Cut-Out

- Note:
- 1.Waterproof Rate:IP68
 - 2.This product must meet IEC61076-2-101
 - 3.This product must meet 2011/65/EU ROHS compliance.
 - 4.Not note tolerances:±0.20

Installation Category	PCBinstall
Degree of protection	IP68(in mated condition)
Mechanical operation	> 100 mating cycles
Upper temperature	105°C
Lower temperature	-40°C
Pollution degree	3
Overtoltage categorie	II
Material group	II
Material of contact	CuZn (Messing/brass)
Contact plating	Au
Material of contact body	PA66
Sealing	EPDM
Material of housing	copper alloy

Ordering Information

FCR2M12 - $\frac{S}{1}$ $\frac{X}{2}$ $\frac{XX}{3}$ $\frac{S}{4}$ $\frac{S}{5}$ $\frac{D}{6}$ $\frac{0}{7}$ $\frac{0}{8}$ - $\frac{00}{9}$

1 Series Name FCR2M12-M12X1.0	2 Category S-Socket	3 Coded A-A CODED B-B CODED D-D CODED	4 Circuits 02-2Circuits 03-3Circuits 04-4Circuits 05-5Circuits 06-6Circuits 07-7Circuits 08-8Circuits 09-9Circuits 10-10Circuits 11-11Circuits 12-12Circuits	5 Contact S-socket
----------------------------------	------------------------	--	---	-----------------------

6 Entry Angle S-180° Vertical	7 Wiring type D-Through Hole	8 Shield 0-without shield	9 SN 00
----------------------------------	---------------------------------	------------------------------	------------

Pin Assignments Front View	Rated Voltage	Rated impulse Voltage	Rated Current	Contact resistance	Insulation resistance
	30V	800V	2A	≤5mΩ	≥100MΩ
	30V	800V	2A	≤5mΩ	≥100MΩ
	30V	800V	2A	≤5mΩ	≥100MΩ

THIRD ANGLE PROJECTION	GENERAL TOLERANCES (UNLESS SPECIFIED)		APPROVE BY LEO	DATE 20/Jan/25	PART NO. FCR2M12-SXXXSSD0-00	ITEM NO. FCR2M12	 Building Technology Cornerstone
	DESIGN UNITS METRIC	X. ±0.30	X.* ±5°	CHECKED BY GISELLE	DATE 20/Jan/25	TITLE M12 female socket, unshielded, 2~17 core, M12X1.0, rear lock, codes A/B/D	
SCALE 1:1	SIZE A4	X.XX ±0.15	X.XX* ±1°	DRAWN BY King	DATE 20/Jan/25	THIS DRAWING CONTAINS INFORMATION THAT IS PROPRIETARY TO TXGA INDUSTRIAL ELECTRONICS(S.Z)CO.,LTD AND SHOULD NOT BE USED WITHOUT WRITTEN PERMISSION	

REV	LOCATIONS	DESCRIPTION	DATE	REVISER	APPD
REV 1		Modify PCB hole orientation	20/Jan/25	King	LEO
REV 2		1.Added 16/17 core products 2.PCB hole size adjustment annotation method	06/Feb/25	King	LEO

2-core PCB hole size	3-core PCB hole size	4-core PCB hole size	5-core PCB hole size	6-core PCB hole size
7-core PCB hole size	8-core PCB hole size	9-core PCB hole size	10-core PCB hole size	11-core PCB hole size
12-core PCB hole size	16-core PCB hole size	17-core PCB hole size		

 THIRD ANGLE PROJECTION DESIGN UNITS METRIC SCALE 1:1 SIZE A4	GENERAL TOLERANCES (UNLESS SPECIFIED)		APPROVE BY LEO	DATE 20/Jan/25	PART NO. FCR2M12-SXXXSSD0-00	ITEM NO. FCR2M12	 Building Technology Cornerstone
	X. ±0.30	X.* ±5'	CHECKED BY GISELLE	DATE 20/Jan/25	TITLE M12 female socket, unshielded, 2~17 core, M12X1.0, rear lock, codes A/B/D		
	X.X ±0.20	X.X' ±2'	DRAWN BY King	DATE 20/Jan/25	THIS DRAWING CONTAINS INFORMATION THAT IS PROPRIETARY TO TXGA INDUSTRIAL ELECTRONICS(S.Z)CO.,LTD AND SHOULD NOT BE USED WITHOUT WRITTEN PERMISSION		SHEET NO. 5/5
	X.XX ±0.15	X.XX' ±1'					
	X.XXX ±0.10	X.XXX' ±0.5'					