

A

B

C

D

E

F

A

B

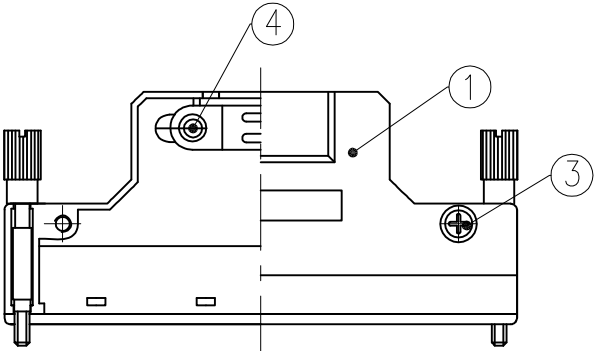
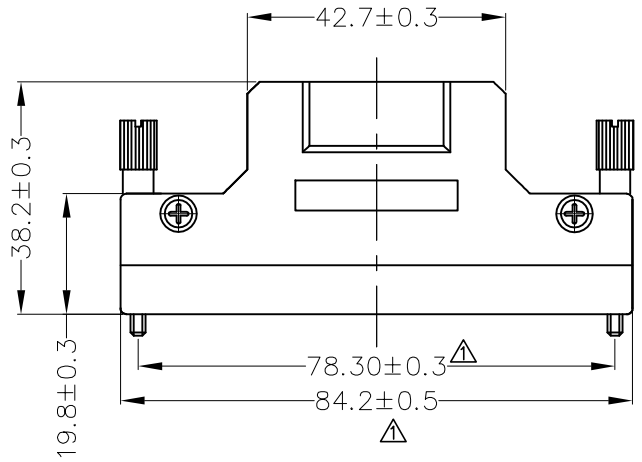
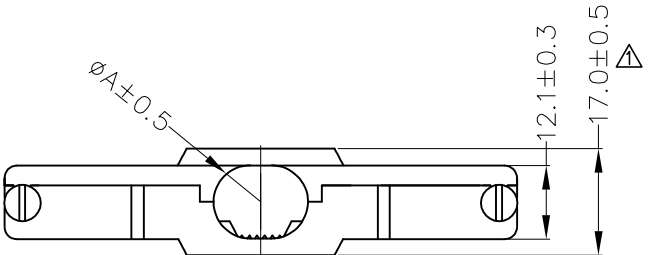
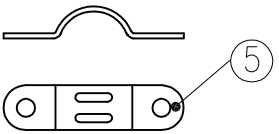
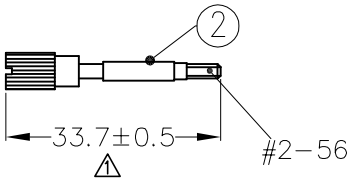
C

D

E



F

| REV | LOCATIONS | DESCRIPTION | DATE | REVISER | APPD |
|-----|-----------|-------------------|-----------|---------|------|
| 1 | ⚠ | Update tolerances | 02/AUG/24 | MATT | LEO |



| ITEM | PART NAME | Q'TY | NOTES |
|------|-----------------|------|---------------------------------------|
| 1 | Back shell | 2 | Zinc alloy, Nickel plated over copper |
| 2 | Jackscrew | 2 | Steel, Nickel plated over copper |
| 3 | Flat screw M2.6 | 2 | Steel, Nickel plated over copper |
| 4 | Flat screw M2.6 | 2 | Steel, Nickel plated over copper |
| 5 | Cable clipper | 1 | Steel, Nickel plated |

| Part No. | Dimensions(mm) |
|-----------------|----------------|
| | A |
| FCS10001-C200BA | 11.0 |
| FCS10001-C200BB | 14.0 |

| | | | | | | | | |
|--|--|------------|---------------------|-------------------|--|--|--|--|
|  THIRD ANGLE PROJECTION | GENERAL TOLERANCES (UNLESS SPECIFIED) | | APPROVE BY FRANK | DATE 02/APR/20 | PART NO. FCS10001-C200BX | ITEM NO. FCS10001 |  Building Technology Cornerstone | |
| | X. ±0.30 | X.* ±5° | CHECKED BY | DATE | TITLE SCSI Connector 100 circuits Cover | | REV 1 SHEET NO. 1/1 | |
| | XX ±0.20 | X.X* ±2° | CHERRY | 02/APR/20 | | | | |
| | DESIGN UNITS Metric | XX.X ±0.15 | X.XX* ±1° | DRAWN BY | DATE | THIS DRAWING CONTAINS INFORMATION THAT IS PROPRIETARY TO TXGA INDUSTRIAL ELECTRONICS(S.Z)CO.,LTD AND SHOULD NOT BE USED WITHOUT WRITTEN PERMISSION | | |
| SCALE 5:1 | SIZE A4 | XXX ±0.10 | XXX* ±0.5° | KATE | 02/APR/20 | | | |