

REV	LOCATIONS	DESCRIPTION	DATE	REVISER	APPD
1	△	Change the P.C.Board layout	15/MAR/21	KATE	CHERRY

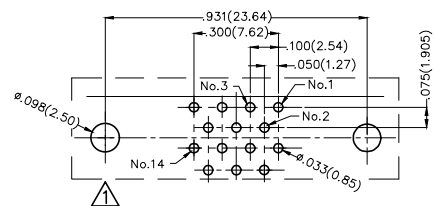
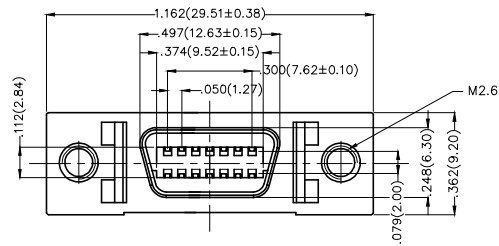
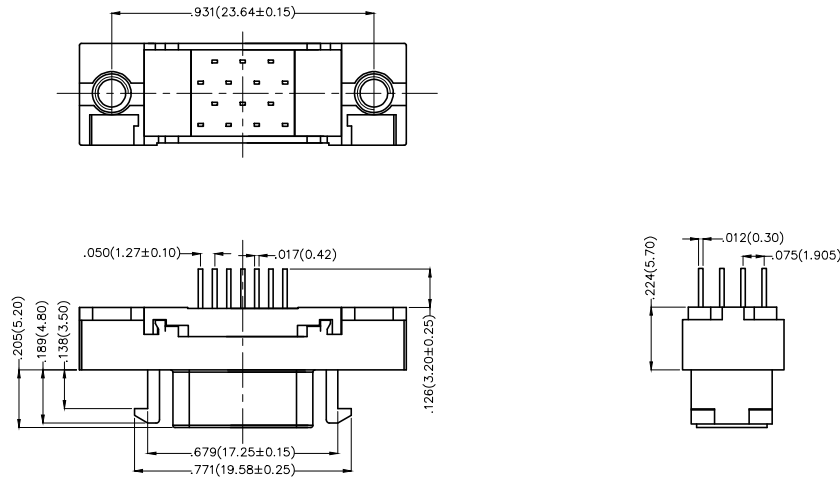
SPECIFICATIONS

Electrical

Current Rating: 1A AC(rms)/DC
Voltage Rating: 250V AC(rms)/DC
Contact Resistance: 30 mΩ Max
Insulation Resistance: 500 MΩ Min
Withstanding Voltage: 500V AC r.m.s
Temperature Range—Operating: -55°C~+105°C

Material and Plating

Housing: PBT (UL 94V-0)
Contact: Phosphor Bronze
Contact plating: Selective gold in contact area, tin on tail
Shell: Zinc Alloy




Recommended P.C.Board Layout
General Tolerances: ±0.05mm

Ordering Information

FCS 14 02 — F0 D S 3 XX K6 K A
1 2 3 4 5 6 7 8 9 10 11

1	Category FCS-SCSI	2	Circuits 14	3	Distinction No. 02	4	Type F0-Female	5	Assembly Layout D-DIP	6	Entry Angle S-180° Vertical
7	Plating 3-Selective gold in contact area, tin on tail	8	Thickness of Plating 00-Gold flash 03-3μ" Custom plate available	9	Color-Resin K6-Black	10	Packaging K-Tray	11	Distinction Type A-Type A		

THIRD ANGLE PROJECTION	GENERAL TOLERANCES (UNLESS SPECIFIED)		APPROVE BY FRANK	DATE 19/JUL/13	PART NO. FCS1402-FODS3XXK6KA	ITEM NO. FCS1402	 Leader Of Industry	
	DESIGN UNITS Inch (metric)	X.±.012(0.30) X.X±.008(0.20) X.XX±.006(0.15) X.XXX±.004(0.10)	X.±5' X.±2' .XX±1' .XXX±0.5'	CHECKED BY CHERRY	DATE 19/JUL/13	TITLE SCSI Connector Pitch 1.27mm 180° Vertical Female		
SCALE 5:1	SIZE A4		DRAWN BY KEVIN	DATE 19/JUL/13	THIS DRAWING CONTAINS INFORMATION THAT IS PROPRIETARY TO TXGA INDUSTRIAL ELECTRONICS(S.Z)CO.,LTD AND SHOULD NOT BE USED WITHOUT WRITTEN PERMISSION		REV 1	SHEET NO. 1/1

REV	LOCATIONS	DESCRIPTION	DATE	REVISER	APPD
1	△	Change the P.C.Board layout	15/MAR/21	KATE	CHERRY

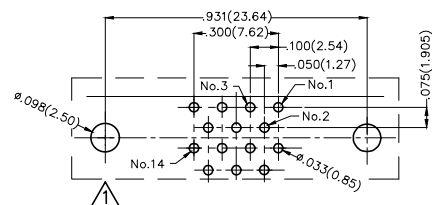
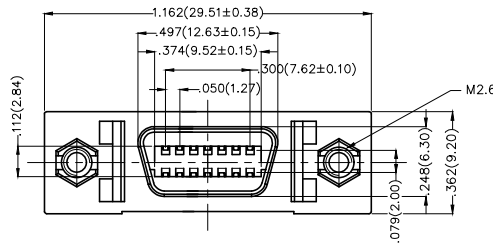
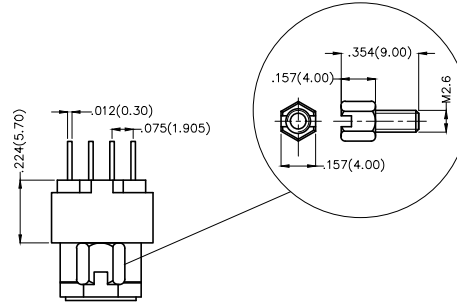
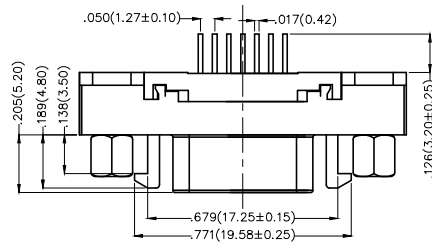
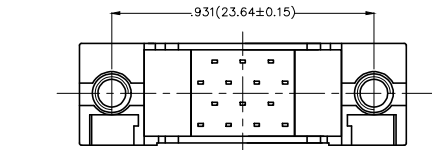
SPECIFICATIONS

Electrical

Current Rating: 1A AC(rms)/DC
Voltage Rating: 250V AC(rms)/DC
Contact Resistance: 30 mΩ Max
Insulation Resistance: 500 MΩ Min
Withstanding Voltage: 500V AC r.m.s
Temperature Range—Operating: -55°C~+105°C

Material and Plating

Housing: PBT (UL 94V-0)
Contact: Phosphor Bronze
Contact plating: Selective gold in contact area, tin on tail
Shell: Zinc Alloy



Recommended P.C.Board Layout
General Tolerances: ±0.05mm

Ordering Information

FCS 14 02 — F0 D S 3 XX K6 K B
1 2 3 4 5 6 7 8 9 10 11

1	Category FCS-SCSI	2	Circuits 14	3	Distinction No. 02	4	Type F0-Female	5	Assembly Layout D-DIP	6	Entry Angle S-180° Vertical	
7	Plating 3-Selective gold in contact area, tin on tail		8	Thickness of Plating 00-Gold flash 03-3μ" Custom plate available		9	Color-Resin K6-Black		10	Packaging K-Tray	11	Distinction Type B-Type B

 THIRD ANGLE PROJECTION	GENERAL TOLERANCES (UNLESS SPECIFIED)		APPROVE BY FRANK	DATE 19/JUL/13	PART NO. FCS1402-FODS3XXK6KB	ITEM NO. FCS1402	 Leader Of Industry	
	DESIGN UNITS Inch (metric)	X.±.012(0.30) X.X±.008(0.20) X.XX±.006(0.15) X.XXX±.004(0.10)	X'.±5' .X'±2' .XX'±1' .XXX'±0.5'	CHECKED BY CHERRY	DATE 19/JUL/13	TITLE SCSI Connector Pitch 1.27mm 180° Vertical Female		REV 1
SCALE 5:1	SIZE A4		DRAWN BY KEVIN	DATE 19/JUL/13	THIS DRAWING CONTAINS INFORMATION THAT IS PROPRIETARY TO TXGA INDUSTRIAL ELECTRONICS(S.Z)CO.,LTD AND SHOULD NOT BE USED WITHOUT WRITTEN PERMISSION			

REV	LOCATIONS	DESCRIPTION	DATE	REVISER	APPD
1	△	Change the P.C.Board layout	15/MAR/21	KATE	CHERRY

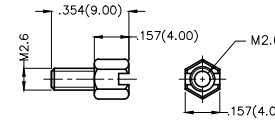
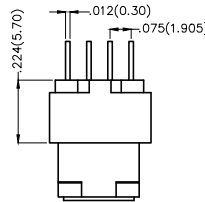
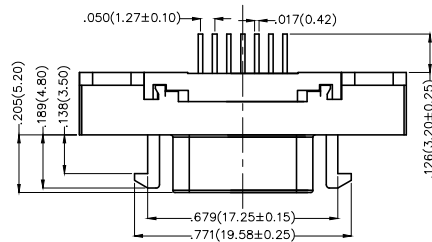
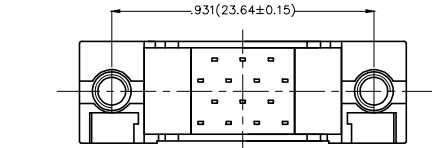
SPECIFICATIONS

Electrical

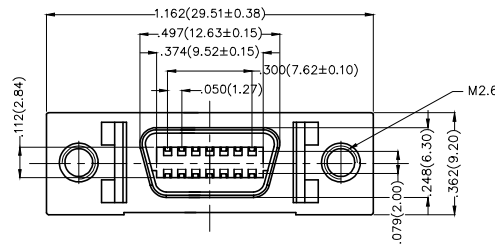
Current Rating: 1A AC(rms)/DC
Voltage Rating: 250V AC(rms)/DC
Contact Resistance: 30 mΩ Max
Insulation Resistance: 500 MΩ Min
Withstanding Voltage: 500V AC r.m.s
Temperature Range—Operating: -55°C~+105°C

Material and Plating

Housing: PBT (UL 94V-0)
Contact: Phosphor Bronze
Contact plating: Selective gold in contact area, tin on tail
Shell: Zinc Alloy



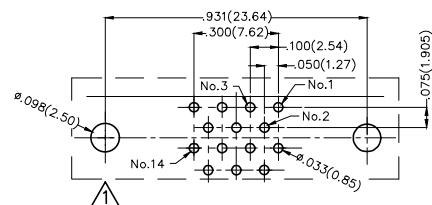
Screw (2pcs)



Ordering Information


FCS 14 02 — F0 D S 3 XX K6 K C
1 2 3 4 5 6 7 8 9 10 11

1	Category FCS-SCSI	2	Circuits 14	3	Distinction No. 02	4	Type F0-Female	5	Assembly Layout D-DIP	6	Entry Angle S-180° Vertical
7	Plating 3-Selective gold in contact area, tin on tail	8	Thickness of Plating 00-Gold flash 03-3μ" Custom plate available	9	Color-Resin K6-Black	10	Packaging K-Tray	11	Distinction Type C-Type C		



Recommended P.C.Board Layout

General Tolerances: ±0.05mm

THIRD ANGLE PROJECTION	GENERAL TOLERANCES (UNLESS SPECIFIED)		APPROVE BY FRANK	DATE 19/JUL/13	PART NO. FCS1402-FODS3XXK6KC	ITEM NO. FCS1402	 Leader Of Industry	
	DESIGN UNITS Inch (metric)	X.±.012(0.30) X.X±.008(0.20) X.XX±.006(0.15) X.XXX±.004(0.10)	X.±5' X.±2' .XX±1" .XXX±0.5'	CHECKED BY CHERRY	DATE 19/JUL/13	TITLE SCSI Connector Pitch 1.27mm 180° Vertical Female		REV 1
SCALE 5:1	SIZE A4		DRAWN BY KEVIN	DATE 19/JUL/13	THIS DRAWING CONTAINS INFORMATION THAT IS PROPRIETARY TO TXGA INDUSTRIAL ELECTRONICS(S.Z)CO.,LTD AND SHOULD NOT BE USED WITHOUT WRITTEN PERMISSION			