

REV	LOCATIONS	DESCRIPTION	DATE	REVISER	APPD
1		New template, Size change	13/Mar/25	NICK	LEO

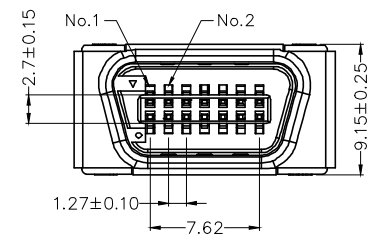
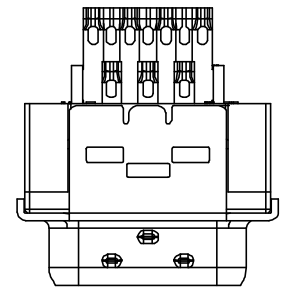
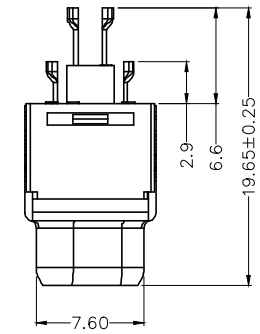
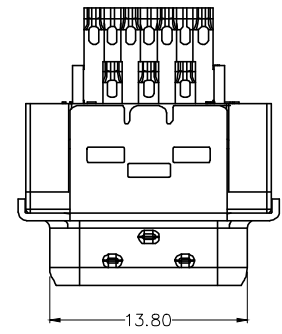
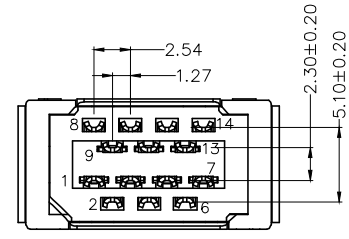
SPECIFICATIONS

Electrical

Current Rating: 1A AC(rms)/DC
Voltage Rating: 40V AC(rms) 500V DC
Contact Resistance: 35 mΩ Max
Insulation Resistance: 200 MΩ Min
Withstanding Voltage: 500V AC r.m.s
Temperature Range-Operating: -25°C~+85°C

Material and Plating

Housing: PBT (UL 94V-0), Black
Contact: Phosphor Bronze/ Selective gold in contact area, tin on tail
Cover: Copper Alloy/ Nickel plated
Shell: SPCC/ Nickel plated



Ordering Information

FCS 14 06 — M0 W S 3 XX K6 K
1 2 3 4 5 6 7 8 9 10

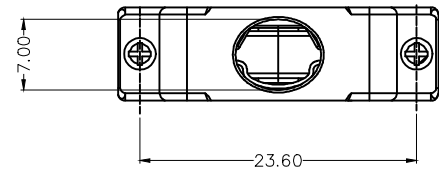
1	Category	2	Circuits	3	Distinction No.	4	Type	5	Assembly Layout	6	Entry Angle
	FCS-SCSI		14		06		M0-Male		W-Welding Type		S-180° Vertical
7	Plating		8		Thickness of Plating		9		10		Packaging
	3-Selective gold in contact area, bright tin on tail				00-Gold flash 03-3μ" Custom plate available		9		Color-Resin		K-Tray
							K6-Black				

 THIRD ANGLE PROJECTION	GENERAL TOLERANCES (UNLESS SPECIFIED)		APPROVE BY	DATE	PART NO.	ITEM NO.	 Building Technology Cornerstone	
	X. ±0.30	X.' ±5'	LEO	9/Sept/23	FCS1406-MOWS3XXK6K	FCS1406		
	DESIGN UNITS	X.X ±0.20	X.X' ±2'	CHECKED BY	DATE	TITLE		REV 1 SHEET NO. 1/2
	METRIC	X.XX ±0.15	X.XX' ±1'	GISELLE	9/Sept/23	SCSI Connector Pitch 1.27mm 180° Vertical Male		
SCALE	SIZE	X.XXX ±0.10	X.XXX' ±0.5'	DRAWN BY	DATE	THIS DRAWING CONTAINS INFORMATION THAT IS PROPRIETARY TO TXGA INDUSTRIAL ELECTRONICS(S.Z)CO.,LTD AND SHOULD NOT BE USED WITHOUT WRITTEN PERMISSION		
5:1	A4			NICK	9/Sept/23			

1 2 3 4 5 6 7 8

REV	LOCATIONS	DESCRIPTION	DATE	REVISED	APPD

A

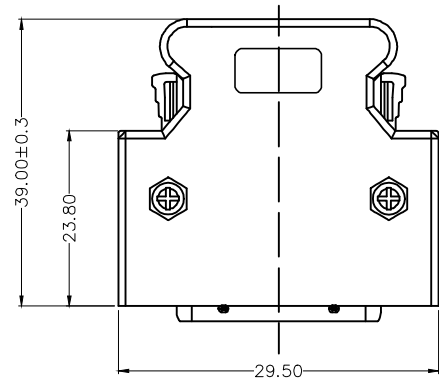


B

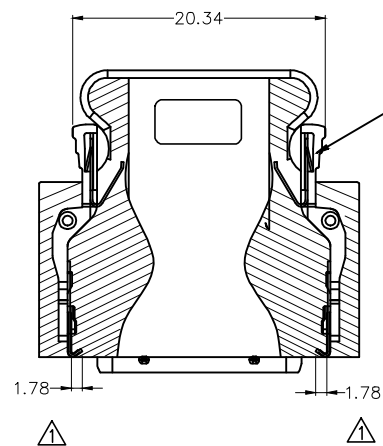
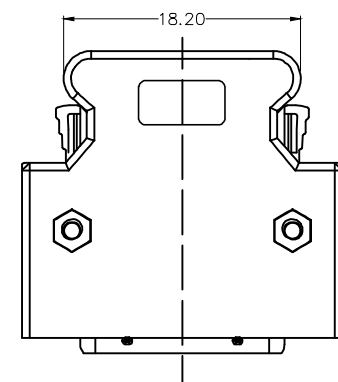
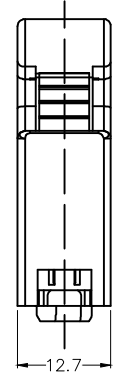
Material—Cover

Plastic cover: PBT (UL 94V-0), Black
 Clamp: SPCC

C



D



Snaps

E

F

<p>THIRD ANGLE PROJECTION</p>	GENERAL TOLERANCES (UNLESS SPECIFIED)		APPROVE BY	DATE	PART NO.	ITEM NO.	<p>Building Technology Cornerstone</p>
	X. ±0.30	X.' ±5'	LEO	9/Sept/23	FCS1406-MOWS3XXK6K	FCS1406	
DESIGN UNITS METRIC	X.X ±0.20	X.X' ±2'	CHECKED BY	DATE	TITLE		REV 1
SCALE	X.XX ±0.15	X.XX' ±1'	GISELLE	9/Sept/23	SCSI Connector Pitch 1.27mm 180° Vertical Male		
SIZE	X.XXX ±0.10	X.XXX' ±0.5'	DRAWN BY	DATE	THIS DRAWING CONTAINS INFORMATION THAT IS PROPRIETARY TO TXGA INDUSTRIAL ELECTRONICS(S.Z)CO.,LTD AND SHOULD NOT BE USED WITHOUT WRITTEN PERMISSION		
5:1	A4		NICK	9/Sept/23			

1 2 3 4 5 6 7 8