

REV	LOCATIONS	DESCRIPTION	DATE	REVISER	APPD
1		Update dimensions and tolerances	18/OCT/24	MATT	LEO
2		Add marking code	21/Apr/25	NICK	LEO

SPECIFICATIONS

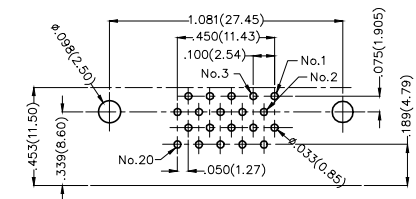
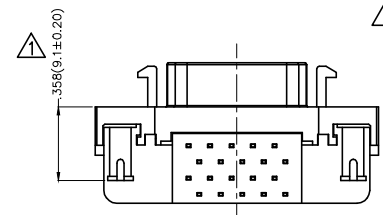
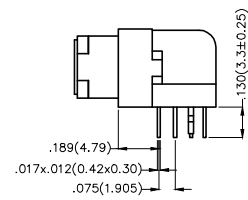
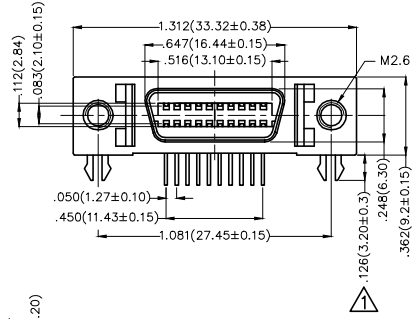
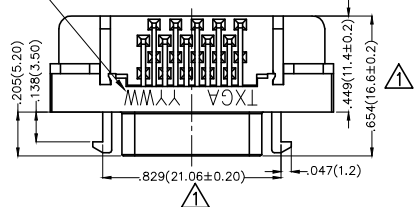
Electrical

Current Rating: 1A AC(rms)/DC  
Voltage Rating: 250V AC(rms)/DC  
Contact Resistance: 30 mΩ Max  
Insulation Resistance: 500 MΩ Min  
Withstanding Voltage: 500V AC r.m.s  
Temperature Range—Operating: -55°C~+105°C

Material and Plating

Housing: PBT (UL 94V-0)  
Contact: Phosphor Bronze  
Contact plating: Selective gold in contact area, tin on tail  
Shell: Zinc Alloy

Date Code



Recommended P.C.Board Layout  
General Tolerances: ±0.05mm

Ordering Information

FCS 20 01 — F0 D B 3 XX K6 K A  
1 2 3 4 5 6 7 8 9 10 11

1	Category FCS-SCSI	2	Circuits 20	3	Distinction No. 01	4	Type F0-Female	5	Assembly Layout D-DIP	6	Entry Angle B-90° Angle
7	Plating 3-Selective gold in contact area, tin on tail	8	Thickness of Plating 00-Gold flash 03-3μ" Custom plate available	9	Color-Resin K6-Black	10	Packaging K-Tray	11	Distinction Type A-Type A		

	GENERAL TOLERANCES (UNLESS SPECIFIED)		APPROVE BY FRANK	DATE 19/JUL/13	PART NO. FCS2001-F0DB3XXK6KA	ITEM NO. FCS2001	 Building Technology Cornerstone	
	DESIGN UNITS Inch (metric)	X.±.012(0.30) X.X±.008(0.20) X.XX±.006(0.15) X.XXX±.004(0.10)	X.±5° .X±2° .XX±1° .XXX±0.5°	CHECKED BY CHERRY	DATE 19/JUL/13	TITLE SCSI Connector Pitch 1.27mm 90° Angle Female		
SCALE 5:1	SIZE A4		DRAWN BY KEVIN	DATE 19/JUL/13	THIS DRAWING CONTAINS INFORMATION THAT IS PROPRIETARY TO TXGA INDUSTRIAL ELECTRONICS(S.Z)CO.,LTD AND SHOULD NOT BE USED WITHOUT WRITTEN PERMISSION		REV 2	SHEET NO. 1/1

REV	LOCATIONS	DESCRIPTION	DATE	REVISER	APPD
1	△	Update dimensions and tolerances	18/OCT/24	MATT	LEO
2	△	Add marking code	21/Apr/25	NICK	LEO

SPECIFICATIONS

Electrical

Current Rating: 1A AC(rms)/DC  
Voltage Rating: 250V AC(rms)/DC  
Contact Resistance: 30 mΩ Max  
Insulation Resistance: 500 MΩ Min  
Withstanding Voltage: 500V AC r.m.s  
Temperature Range—Operating: -55°C~+105°C

Material and Plating

Housing: PBT (UL 94V-0)  
Contact: Phosphor Bronze  
Contact plating: Selective gold in contact area, tin on tail  
Shell: Zinc Alloy

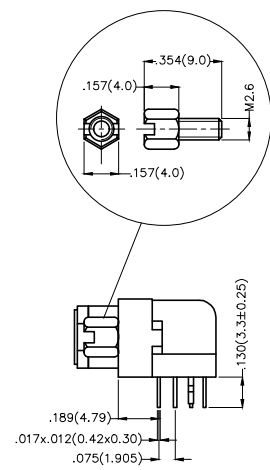
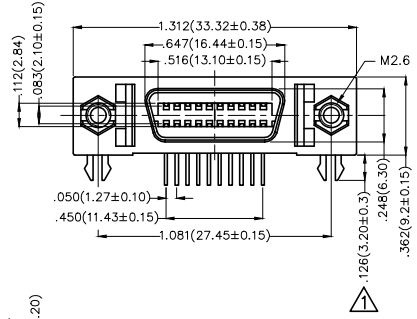
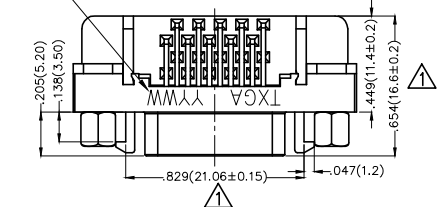
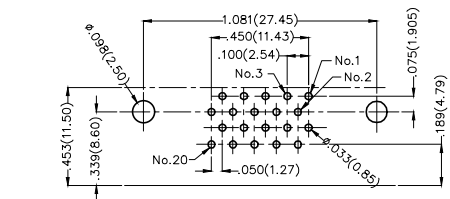
Ordering Information

FCS 20 01 — F0 D B 3 XX K6 K B  
1 2 3 4 5 6 7 8 9 10 11

1	Category FCS-SCSI	2	Circuits 20	3	Distinction No. 01	4	Type F0-Female	5	Assembly Layout D-DIP	6	Entry Angle B-90° Angle
7	Plating 3-Selective gold in contact area, tin on tail	8	Thickness of Plating 00-Gold flash 03-3μ" Custom plate available	9	Color-Resin K6-Black	10	Packaging K-Tray	11	Distinction Type B-Type B		

Recommended P.C.Board Layout

General Tolerances: ±0.05mm



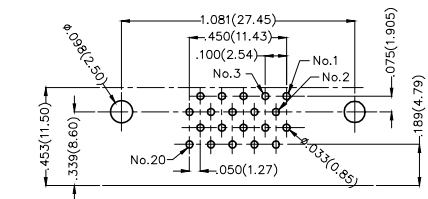
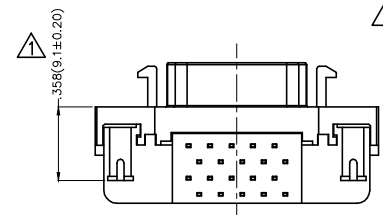
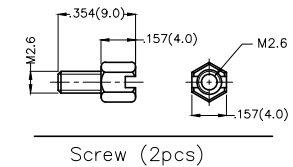
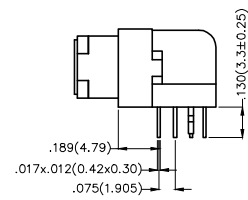
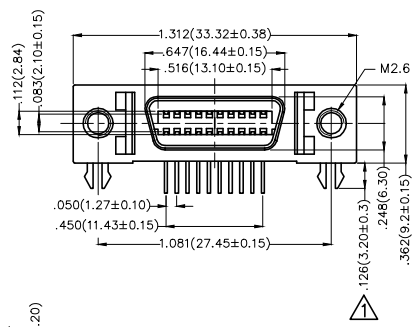
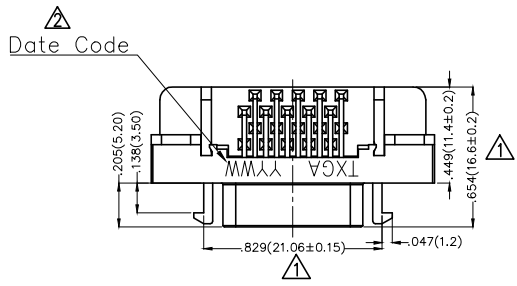
THIRD ANGLE PROJECTION	GENERAL TOLERANCES (UNLESS SPECIFIED)		APPROVE BY FRANK	DATE 19/JUL/13	PART NO. FCS2001-F0DB3XXK6KB	ITEM NO. FCS2001		
	DESIGN UNITS Inch (metric)	X.±.012(0.30) X.X±.008(0.20)	X.±5° .X±2°	CHECKED BY CHERRY	DATE 19/JUL/13	TITLE SCSI Connector Pitch 1.27mm 90° Angle Female		REV 2
SCALE 5:1	SIZE A4	X.XX±.006(0.15) X.XXX±.004(0.10)	.XX±1° .XXX±0.5°	DRAWN BY KEVIN	DATE 19/JUL/13	THIS DRAWING CONTAINS INFORMATION THAT IS PROPRIETARY TO TXGA INDUSTRIAL ELECTRONICS(S.Z)CO.,LTD AND SHOULD NOT BE USED WITHOUT WRITTEN PERMISSION		

REV	LOCATIONS	DESCRIPTION	DATE	REVISER	APPD
1	△	Update dimensions and tolerances	18/OCT/24	MATT	LEO
2	△	Add marking code	21/Apr/25	NICK	LEO

SPECIFICATIONS

Electrical  
 Current Rating: 1A AC(rms)/DC  
 Voltage Rating: 250V AC(rms)/DC  
 Contact Resistance: 30 mΩ Max  
 Insulation Resistance: 500 MΩ Min  
 Withstanding Voltage: 500V AC r.m.s  
 Temperature Range—Operating: -55°C~+105°C

Material and Plating  
 Housing: PBT (UL 94V-0)  
 Contact: Phosphor Bronze  
 Contact plating: Selective gold in contact area, tin on tail  
 Shell: Zinc Alloy



Recommended P.C.Board Layout  
 General Tolerances: ±0.05mm

Ordering Information

FCS 20 01 — F0 D B 3 XX K6 K C  
 1 2 3 4 5 6 7 8 9 10 11

1	Category FCS-SCSI	2	Circuits 20	3	Distinction No. 01	4	Type F0-Female	5	Assembly Layout D-DIP	6	Entry Angle B-90° Angle
7	Plating 3-Selective gold in contact area, tin on tail		8	Thickness of Plating 00-Gold flash 03-3μ" Custom plate available		9	Color-Resin K6-Black	10	Packaging K-Tray	11	Distinction Type C-Type C

 THIRD ANGLE PROJECTION	GENERAL TOLERANCES (UNLESS SPECIFIED)		APPROVE BY FRANK	DATE 19/JUL/13	PART NO. FCS2001-F0DB3XXK6KC	ITEM NO. FCS2001	 Building Technology Cornerstone	
	DESIGN UNITS Inch (metric)	X.±.012(0.30) X.X±.008(0.20)	X.±5° .X±2°	CHECKED BY CHERRY	DATE 19/JUL/13	TITLE SCSI Connector Pitch 1.27mm 90° Angle Female		REV 2
SCALE 5:1	SIZE A4	X.XX±.006(0.15) X.XXX±.004(0.10)	.XX±1° .XXX±0.5°	DRAWN BY KEVIN	DATE 19/JUL/13	THIS DRAWING CONTAINS INFORMATION THAT IS PROPRIETARY TO TXGA INDUSTRIAL ELECTRONICS(S.Z)CO.,LTD AND SHOULD NOT BE USED WITHOUT WRITTEN PERMISSION		