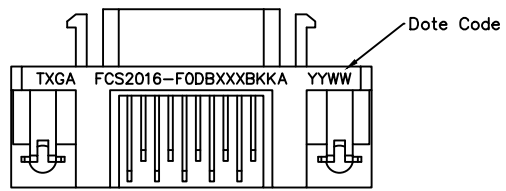
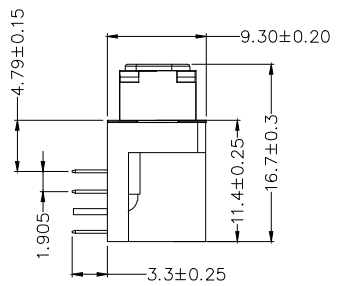
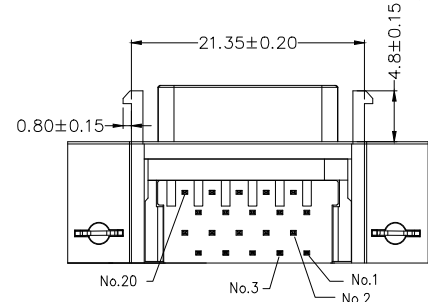
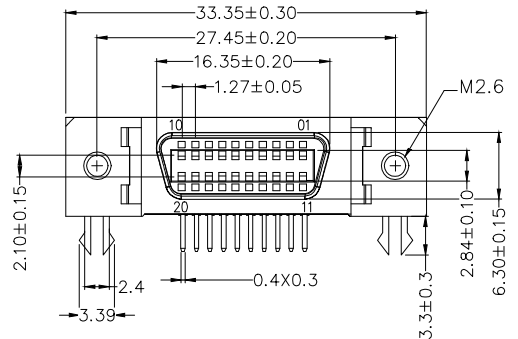


REV	LOCATIONS	DESCRIPTION	DATE	REVISER	APPD

SPECIFICATIONS

Electrical
 Current Rating: 1A AC(rms)/DC
 Voltage Rating: 250V AC(rms) 500V DC
 Contact Resistance: 30 mΩ Max
 Insulation Resistance: 500 MΩ Min
 Withstanding Voltage: 500V AC r.m.s
 Temperature Range-Operating: -40°C~+105°C

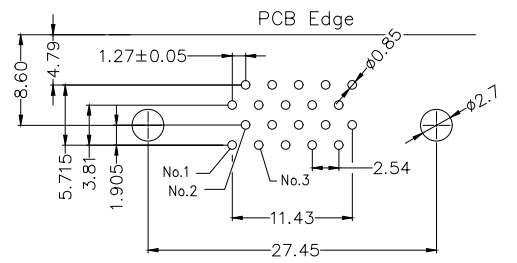
Material and Plating
 Housing: PBT (UL 94V-0), Black
 Contact: Copper Alloy/ Gold plated or Selective gold on contact area, tin on tail
 Shell: Zinc Alloy/ Nickel plated



Ordering Information

FCS 20 16 - F0 D B X XX BK K A
 1 2 3 4 5 6 7 8 9 10 11

1 Category FCS-SCSI	2 Circuits 20	3 Distinction No. 16	4 Type F0-Female	5 Assembly Layout D-DIP	6 Entry Angle B-90° Angle
7 Plating 1-Gold Plated 3-Selective gold in contact area, tin on tail	8 Thickness of Plating 03-3μ" 05-5μ" Custom plate available	9 Color-Resin BK-Black	10 Packaging K-Tray	11 Contact Position A-A Type	



Recommended P.C.Board Layout
 General Tolerances: ±0.05mm

<p>THIRD ANGLE PROJECTION</p>	GENERAL TOLERANCES (UNLESS SPECIFIED) X. ±0.30 X.' ±5' X.X ±0.20 X.X' ±2' X.XX ±0.15 X.XX' ±1' X.XXX ±0.10 X.XXX' ±0.5'		APPROVE BY LEO	DATE 19/OCT/15	PART NO. FCS2016-F0DBXXXBKKA	ITEM NO. FCSXX13	<p>Building Technology Cornerstone</p>	
	DESIGN UNITS METRIC	SCALE 5:1	SIZE A4	CHECKED BY GISELLE	DATE 19/OCT/15	TITLE SCSI Connector Pitch 1.27mm 90° Angle Female		REV 0 SHEET NO. 1/1
DRAWN BY NICK					DATE 19/OCT/15	THIS DRAWING CONTAINS INFORMATION THAT IS PROPRIETARY TO TXGA INDUSTRIAL ELECTRONICS(S.Z)CO.,LTD AND SHOULD NOT BE USED WITHOUT WRITTEN PERMISSION		