

REV	LOCATIONS	DESCRIPTION	DATE	REVISOR	APPD
1	$\triangle$	1: Add accessory details 2: Dimension Update	20/DEC/23	MATT	LEO

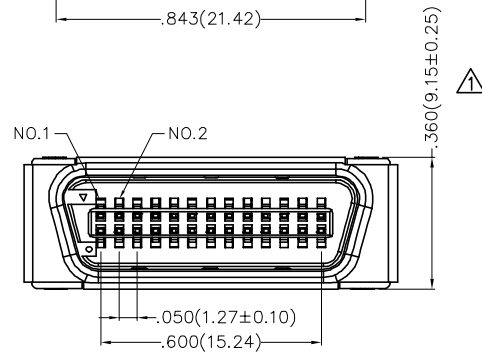
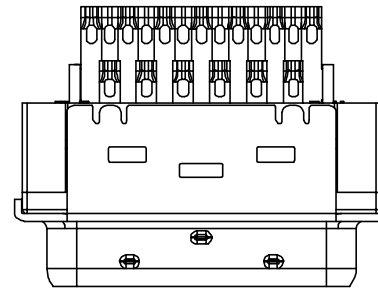
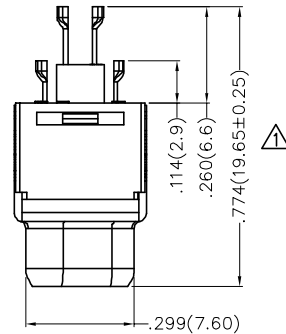
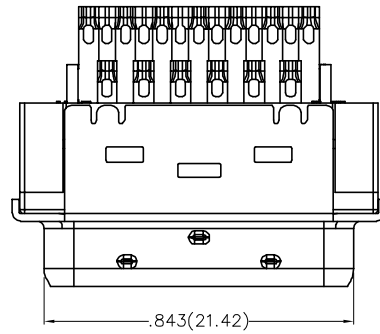
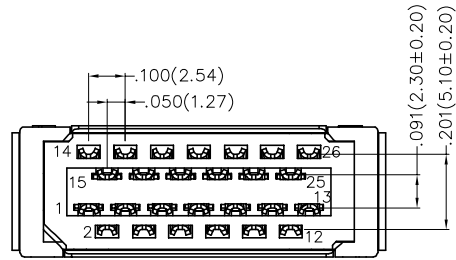
SPECIFICATIONS

Electrical

Current Rating: 1A AC(rms)/DC  
 Voltage Rating: 40V AC(rms) 500V DC  
 Contact Resistance: 35 m $\Omega$  Max  
 Insulation Resistance: 200 M $\Omega$  Min  
 Withstanding Voltage: 500V AC r.m.s  
 Temperature Range-Operating: -25°C~+85°C  
 Wire Accomodation: 30~24 AWG

Material and Plating

Housing: PBT (UL 94V-0), Black  
 Contact: Phosphor Bronze/ Selective gold in contact area, tin on tail  
 Cover: Copper Alloy/ Nickel plated  
 Shell: SPCC/ Nickel plated



Ordering Information

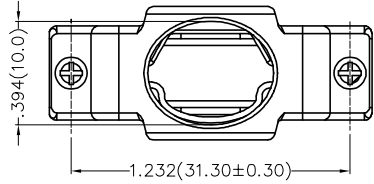
FCS 26 04 — M0 W S 3 XX K6 K  
 1 2 3 4 5 6 7 8 9 10

1	Category	2	Circuits	3	Distinction No.	4	Type	5	Assembly Layout	6	Entry Angle
	FCS-SCSI		26		04		M0-Male		W-Welding Type		S-180° Vertical
7	Plating	8	Thickness of Plating	9	Color-Resin	10	Packaging				
	3-Selective gold in contact area, tin on tail		00-Gold flash 03-3 $\mu$ " Custom plate available		K6-Black		K-Tray				

<p>THIRD ANGLE PROJECTION</p>	GENERAL TOLERANCES (UNLESS SPECIFIED)		APPROVE BY	DATE	PART NO.	ITEM NO.	<p>Building Technology Cornerstone</p>
	X.±.012(0.30)	X:±5'	FRANK	19/JUL/13	FCS2604-M0WS3XXK6K	FCS2604	
DESIGN UNITS Inch (metric)	X.X±.008(0.20)	.X'±2'	CHECKED BY	DATE	TITLE		
	X.XX±.006(0.15)	.XX'±1'	CHERRY	19/JUL/13	SCSI Connector Pitch 1.27mm 180° Vertical Male	REV 1	SHEET NO. 1/2
SCALE 5:1	X.XXX±.004(0.10)	.XXX'±0.5'	DRAWN BY	DATE	THIS DRAWING CONTAINS INFORMATION THAT IS PROPRIETARY TO TXGA INDUSTRIAL ELECTRONICS(S.Z)CO.,LTD AND SHOULD NOT BE USED WITHOUT WRITTEN PERMISSION		
			KEVIN	19/JUL/13			

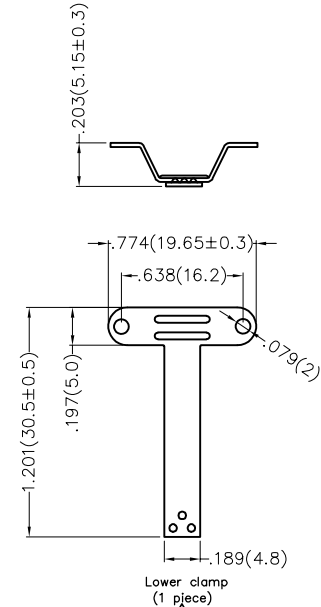
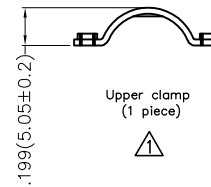
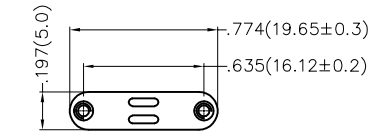
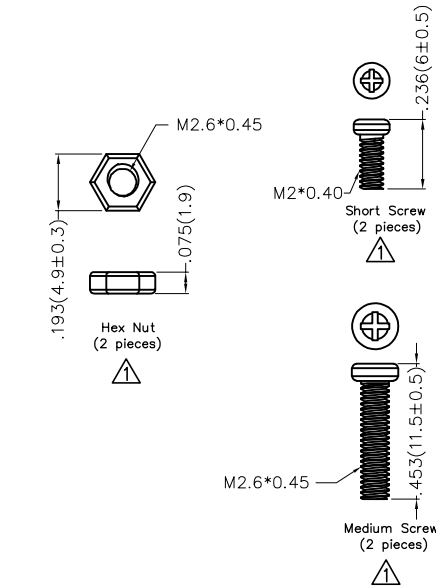
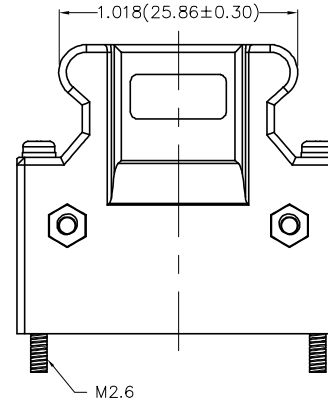
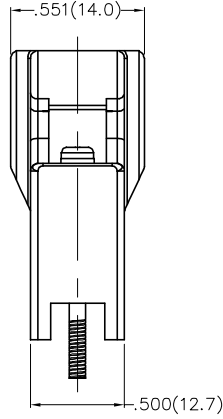
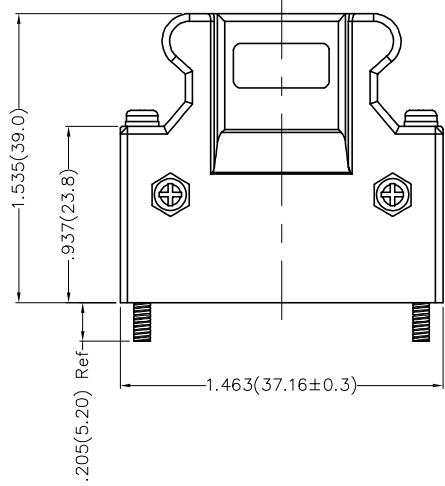
1 2 3 4 5 6 7 8

REV	LOCATIONS	DESCRIPTION	DATE	REVISER	APPD



Material—Cover

Plastic cover: PBT (UL 94V-0), Black  
 Clamp: SPCC



 THIRD ANGLE PROJECTION	GENERAL TOLERANCES (UNLESS SPECIFIED)		APPROVE BY FRANK	DATE 19/JUL/13	PART NO. FCS2604-MOWS3XXK6K	ITEM NO. FCS2604	 Building Technology Cornerstone	
	X.±.012(0.30)	X'.±5'	CHECKED BY CHERRY	DATE 19/JUL/13	TITLE SCSI Connector Pitch 1.27mm 180° Vertical Male			REV 1
	DESIGN UNITS Inch (metric)	X.XX±.008(0.20)	.X'±2'	DRAWN BY KEVIN	DATE 19/JUL/13	THIS DRAWING CONTAINS INFORMATION THAT IS PROPRIETARY TO TXGA INDUSTRIAL ELECTRONICS(S.Z)CO.,LTD AND SHOULD NOT BE USED WITHOUT WRITTEN PERMISSION		
	SCALE 5:1	SIZE A4	X.XXX±.004(0.10)	.XX±1'				

1 2 3 4 5 6 7 8