

1 2 3 4 5 6 7 8

REV	LOCATIONS	DESCRIPTION	DATE	REVISER	APPD

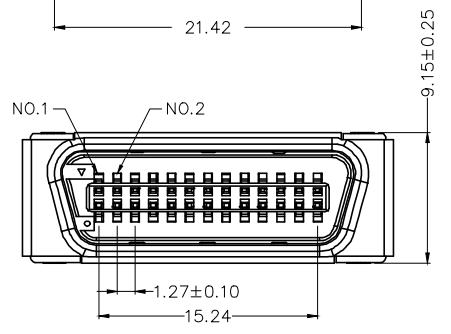
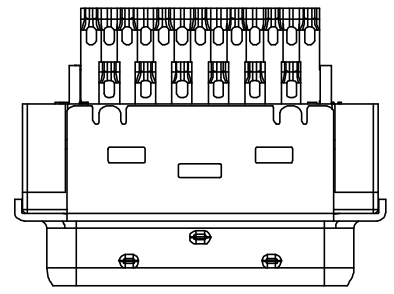
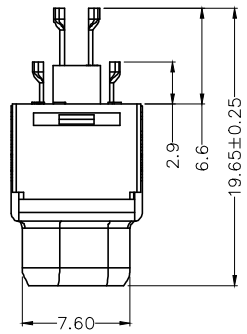
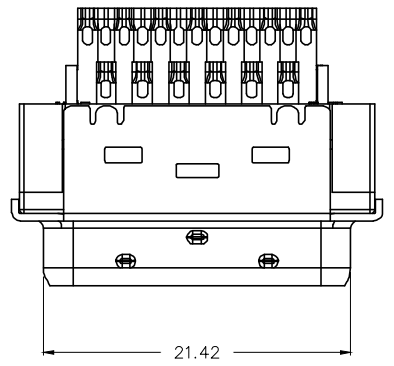
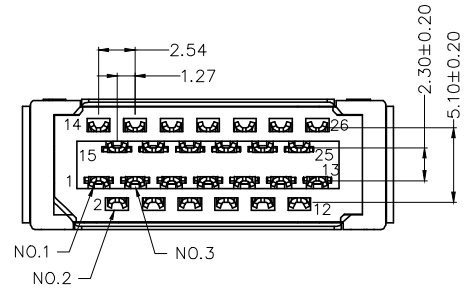
SPECIFICATIONS

Electrical

Current Rating: 1A AC(rms)/DC
 Voltage Rating: 40V AC(rms) 500V DC
 Contact Resistance: 35 mΩ Max
 Insulation Resistance: 200 MΩ Min
 Withstanding Voltage: 500V AC r.m.s
 Temperature Range-Operating: -25°C~+85°C

Material and Plating

Housing: PBT (UL 94V-0), Black
 Contact: Phosphor Bronze/ Selective gold in contact area, tin on tail
 Cover: Copper Alloy/ Nickel plated
 Shell: SPCC/ Nickel plated



Ordering Information

FCS 26 06 — M0 W S 3 XX K6 K
 1 2 3 4 5 6 7 8 9 10

1	Category	2	Circuits	3	Distinction No.	4	Type	5	Assembly Layout	6	Entry Angle	
	FCS-SCSI		26		06		M0-Male		W-Welding Type		S-180° Vertical	
7	Plating		8		Thickness of Plating		9		Color-Resin		10	Packaging
	3-Selective gold in contact area, bright tin on tail				00-Gold flash 03-3μ" Custom plate available		K6-Black				K-Tray	

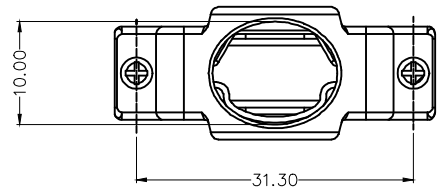
 THIRD ANGLE PROJECTION DESIGN UNITS METRIC SCALE 5:1 SIZE A4	GENERAL TOLERANCES (UNLESS SPECIFIED)		APPROVE BY	DATE	PART NO.	ITEM NO.	 Building Technology Cornerstone
	X. ±0.30	X.' ±5'	LEO	9/Sept/23	FCS2606-MOWS3XXK6K	FCS2606	
	X.X ±0.20	X.X' ±2'	CHECKED BY	DATE	TITLE		REV 0
	X.XX ±0.15	X.XX' ±1'	GISELLE	9/Sept/23	SCSI Connector Pitch 1.27mm 180° Vertical Male		SHEET NO. 1/2
	X.XXX ±0.10	X.XXX' ±0.5'	DRAWN BY	DATE	THIS DRAWING CONTAINS INFORMATION THAT IS PROPRIETARY TO TXGA INDUSTRIAL ELECTRONICS(S.Z)CO.,LTD AND SHOULD NOT BE USED WITHOUT WRITTEN PERMISSION		
			NICK	9/Sept/23			

1 2 3 4 5 6 7 8

1 2 3 4 5 6 7 8

REV	LOCATIONS	DESCRIPTION	DATE	REVISED	APPD

A

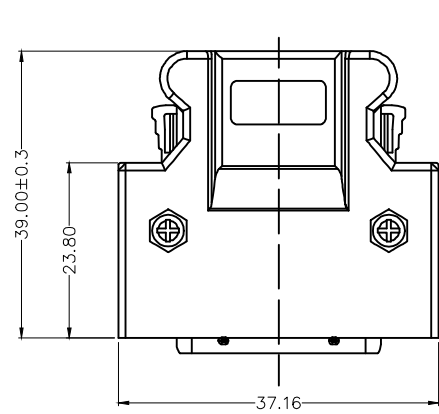


B

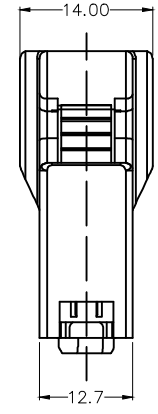
Material—Cover

Plastic cover: PBT (UL 94V-0), Black
Clamp: SPCC

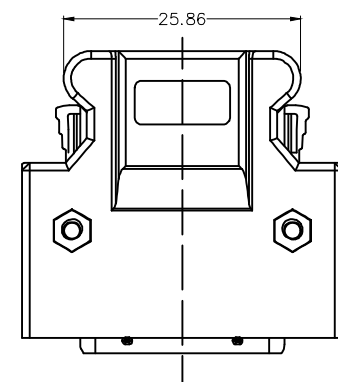
C



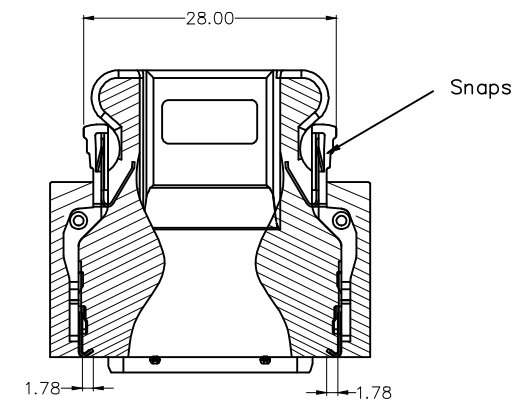
D



E



F



<p>THIRD ANGLE PROJECTION</p>	GENERAL TOLERANCES (UNLESS SPECIFIED)		APPROVE BY	DATE	PART NO.	ITEM NO.	<p>Building Technology Cornerstone</p>
	X. ±0.30	X.' ±5'	LEO	9/Sept/23	FCS2606-MOWS3XXK6K	FCS2606	
DESIGN UNITS METRIC	X.X ±0.20	X.X' ±2'	CHECKED BY	DATE	TITLE		REV 0 SHEET NO. 2/2
SCALE	X.XX ±0.15	X.XX' ±1'	GISELLE	9/Sept/23	SCSI Connector Pitch 1.27mm 180° Vertical Male		
SIZE	X.XXX ±0.10	X.XXX' ±0.5'	DRAWN BY	DATE	THIS DRAWING CONTAINS INFORMATION THAT IS PROPRIETARY TO TXGA INDUSTRIAL ELECTRONICS(S.Z)CO.,LTD AND SHOULD NOT BE USED WITHOUT WRITTEN PERMISSION		F
5:1	A4	NICK	9/Sept/23				

1 2 3 4 5 6 7 8