

REV	LOCATIONS	DESCRIPTION	DATE	REVISER	APPD
1		Change the P.C.Board layout	15/MAR/21	KATE	CHERRY
2		Update dimensions and tolerances	07/AUG/24	MATT	LEO
3		Add spray code	13/Jan/25	NICK	LEO

SPECIFICATIONS

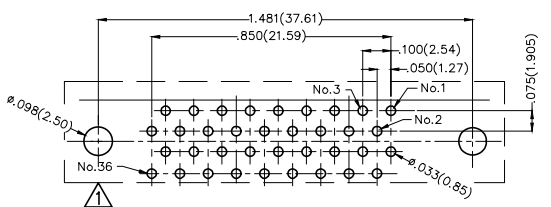
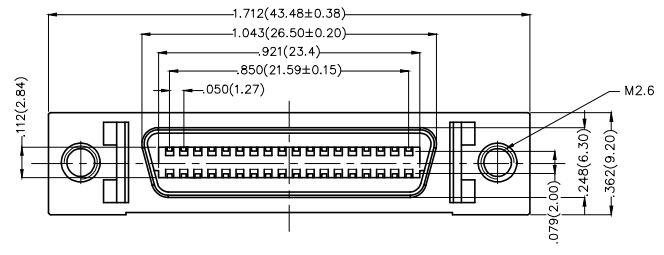
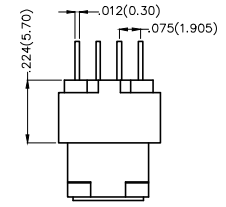
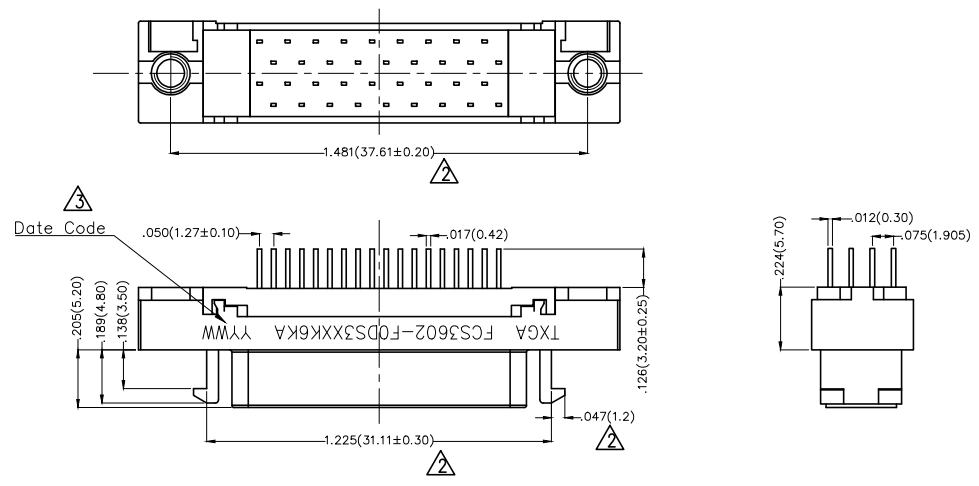
**Electrical**  
 Current Rating: 1A AC(rms)/DC  
 Voltage Rating: 250V AC(rms)/DC  
 Contact Resistance: 30 mΩ Max  
 Insulation Resistance: 500 MΩ Min  
 Withstanding Voltage: 500V AC r.m.s  
 Temperature Range—Operating: -55°C~+105°C

**Material and Plating**  
 Housing: PBT (UL 94V-0)  
 Contact: Phosphor Bronze  
 Contact plating: Selective gold in contact area, tin on tail  
 Shell: Zinc Alloy

Ordering Information

FCS 36 02 — F0 D S 3 XX K6 K A  
 1 2 3 4 5 6 7 8 9 10 11

1	Category FCS-SCSI	2	Circuits 36	3	Distinction No. 02	4	Type F0-Female	5	Assembly Layout D-DIP	6	Entry Angle S-180° Vertical	
7	Plating 3-Selective gold in contact area, tin on tail		8	Thickness of Plating 00-Gold flash 03-3μ" Custom plate available		9	Color-Resin K6-Black		10	Packaging K-Tray	11	Distinction Type A-Type A



Recommended P.C.Board Layout  
 General Tolerances: ±0.05mm

THIRD ANGLE PROJECTION	GENERAL TOLERANCES (UNLESS SPECIFIED)		APPROVE BY FRANK	DATE 19/JUL/13	PART NO. FCS3602-F0DS3XXK6KA	ITEM NO. FCS3602	 Building Technology Cornerstone	
	DESIGN UNITS Inch (metric)	X.±0.12(0.30) X.X±.008(0.20) X.XX±.006(0.15) X.XXX±.004(0.10)	X'.±5' .X'±2' .XX'±1' .XXX'±0.5'	CHECKED BY CHERRY	DATE 19/JUL/13	TITLE SCSI Connector Pitch 1.27mm 180° Vertical Female		REV 3
SCALE 5:1	SIZE A4	DRAWN BY KEVIN		DATE 19/JUL/13	THIS DRAWING CONTAINS INFORMATION THAT IS PROPRIETARY TO TXGA INDUSTRIAL ELECTRONICS(S.Z)CO.,LTD AND SHOULD NOT BE USED WITHOUT WRITTEN PERMISSION			

REV	LOCATIONS	DESCRIPTION	DATE	REVISER	APPD
1		Change the P.C.Board layout	15/MAR/21	KATE	CHERRY
2		Update dimensions and tolerances	07/AUG/24	MATT	LEO
3		Add spray code	13/Jan/25	NICK	LEO

SPECIFICATIONS

Electrical

Current Rating: 1A AC(rms)/DC  
Voltage Rating: 250V AC(rms)/DC  
Contact Resistance: 30 mΩ Max  
Insulation Resistance: 500 MΩ Min  
Withstanding Voltage: 500V AC r.m.s  
Temperature Range—Operating: -55°C~+105°C

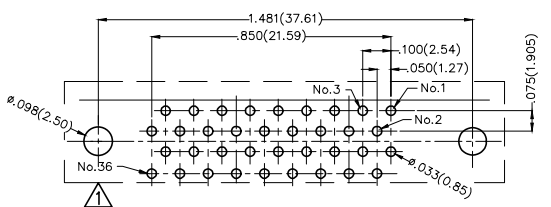
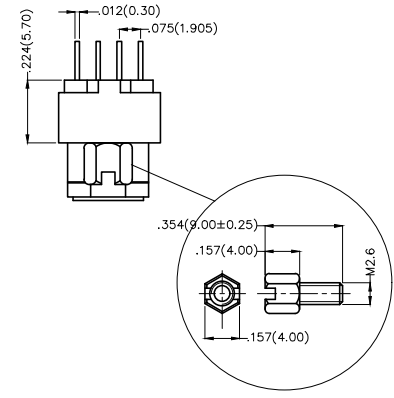
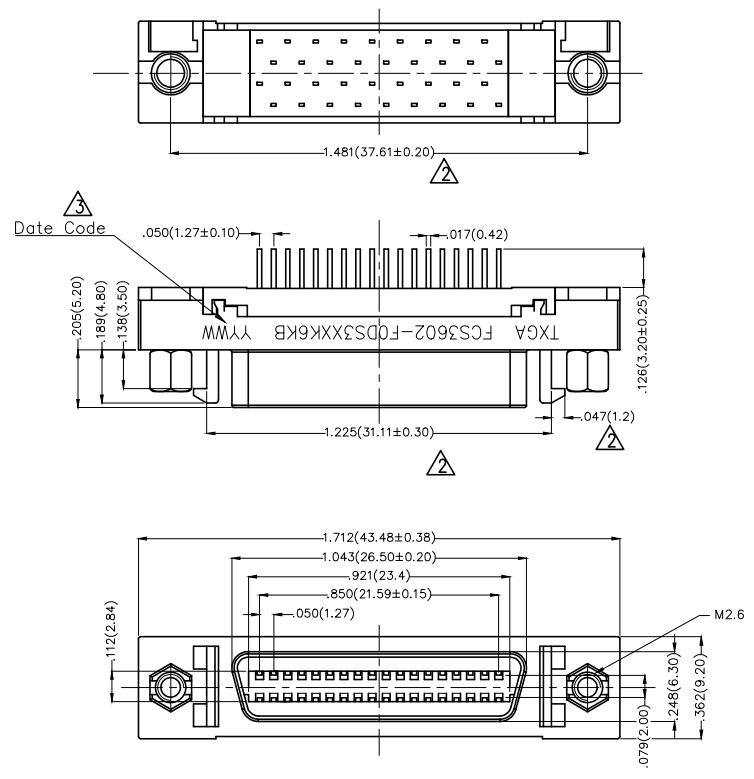
Material and Plating

Housing: PBT (UL 94V-0)  
Contact: Phosphor Bronze  
Contact plating: Selective gold in contact area, tin on tail  
Shell: Zinc Alloy

Ordering Information

FCS 36 02 — F0 D S 3 XX K6 K B  
1 2 3 4 5 6 7 8 9 10 11

1	Category FCS—SCSI	2	Circuits 36	3	Distinction No. 02	4	Type F0—Female	5	Assembly Layout D—DIP	6	Entry Angle S—180° Vertical	
7	Plating 3—Selective gold in contact area, tin on tail		8	Thickness of Plating 00—Gold flash 03—3μ" Custom plate available		9	Color—Resin K6—Black		10	Packaging K—Tray	11	Distinction Type B—Type B



Recommended P.C.Board Layout  
General Tolerances: ±0.05mm

 THIRD ANGLE PROJECTION	GENERAL TOLERANCES (UNLESS SPECIFIED)		APPROVE BY FRANK	DATE 19/JUL/13	PART NO. FCS3602-F0DS3XXK6KB	ITEM NO. FCS3602	 Building Technology Cornerstone	
	X.±.012(0.30)	X'.±5'	CHECKED BY CHERRY	DATE 19/JUL/13	TITLE SCSI Connector Pitch 1.27mm 180° Vertical Female			REV 3
	DESIGN UNITS Inch (metric)	X.XX±.008(0.20)	X'.±2'	DRAWN BY KEVIN	DATE 19/JUL/13	THIS DRAWING CONTAINS INFORMATION THAT IS PROPRIETARY TO TXGA INDUSTRIAL ELECTRONICS(S.Z)CO.,LTD AND SHOULD NOT BE USED WITHOUT WRITTEN PERMISSION		
	SCALE 5:1	SIZE A4	X.XXX±.004(0.10)	X'.±0.5'				

REV	LOCATIONS	DESCRIPTION	DATE	REVISER	APPD
1		Change the P.C.Board layout	15/MAR/21	KATE	CHERRY
2		Update dimensions and tolerances	07/AUG/24	MATT	LEO
3		Add spray code	13/Jan/25	NICK	LEO

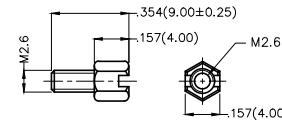
SPECIFICATIONS

Electrical

Current Rating: 1A AC(rms)/DC  
Voltage Rating: 250V AC(rms)/DC  
Contact Resistance: 30 mΩ Max  
Insulation Resistance: 500 MΩ Min  
Withstanding Voltage: 500V AC r.m.s  
Temperature Range—Operating: -55°C~+105°C

Material and Plating

Housing: PBT (UL 94V-0)  
Contact: Phosphor Bronze  
Contact plating: Selective gold in contact area, tin on tail  
Shell: Zinc Alloy

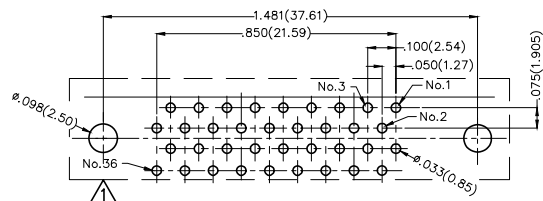
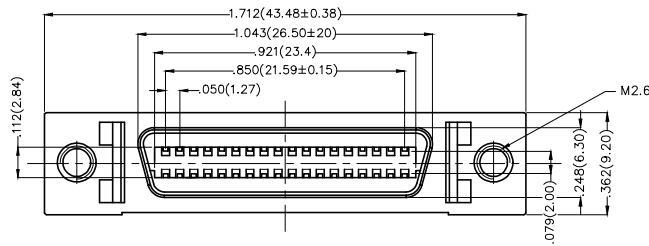
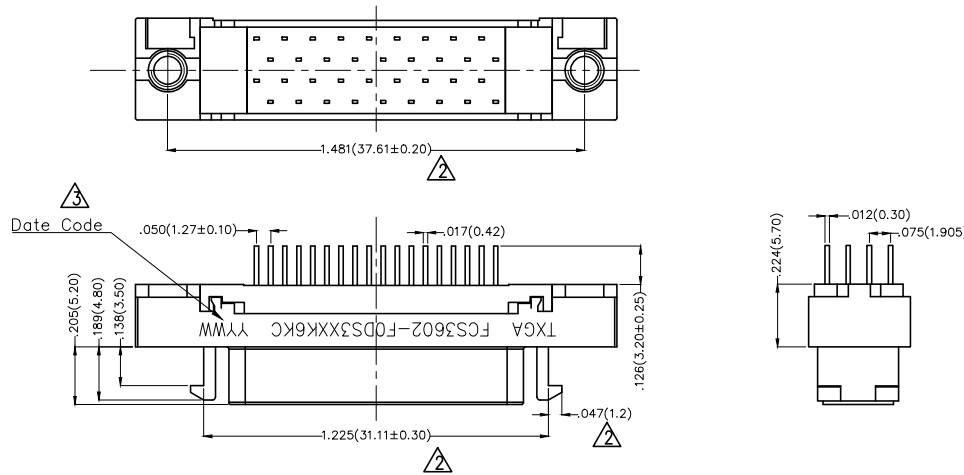


Screw (2pcs)

Ordering Information

FCS 36 02 — F0 D S 3 XX K6 K C  
1 2 3 4 5 6 7 8 9 10 11

1	Category FCS—SCSI	2	Circuits 36	3	Distinction No. 02	4	Type F0—Female	5	Assembly Layout D—DIP	6	Entry Angle S—180° Vertical
7	Plating 3—Selective gold in contact area, tin on tail		8	Thickness of Plating 00—Gold flash 03—3μ" Custom plate available		9	Color—Resin K6—Black	10	Packaging K—Tray	11	Distinction Type C—Type C



Recommended P.C.Board Layout  
General Tolerances: ±0.05mm

THIRD ANGLE PROJECTION	GENERAL TOLERANCES (UNLESS SPECIFIED)		APPROVE BY FRANK	DATE 19/JUL/13	PART NO. FCS3602—FODS3XXK6KC	ITEM NO. FCS3602	 Building Technology Cornerstone	
	DESIGN UNITS Inch (metric)	X.±.012(0.30) X.X±.008(0.20) X.XX±.006(0.15) X.XXX±.004(0.10)	X'.±5' .X'±2' .XX'±1' .XXX'±0.5'	CHECKED BY CHERRY	DATE 19/JUL/13	TITLE SCSI Connector Pitch 1.27mm 180° Vertical Female		REV 3
SCALE 5:1	SIZE A4		DRAWN BY KEVIN	DATE 19/JUL/13	THIS DRAWING CONTAINS INFORMATION THAT IS PROPRIETARY TO TXGA INDUSTRIAL ELECTRONICS(S.Z)CO.,LTD AND SHOULD NOT BE USED WITHOUT WRITTEN PERMISSION			