

REV	LOCATIONS	DESCRIPTION	DATE	REVISER	APPD
1		PART NO.: Change FCS3604-MOWS3XXK6KB into FCS3604-MOWS3XXK6K	15/SEP/23	KATE	LEO
2		1: Add accessory details 2: Dimension Update	20/DEC/23	MATT	LEO

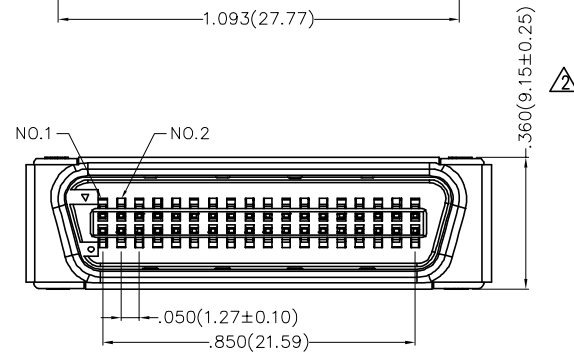
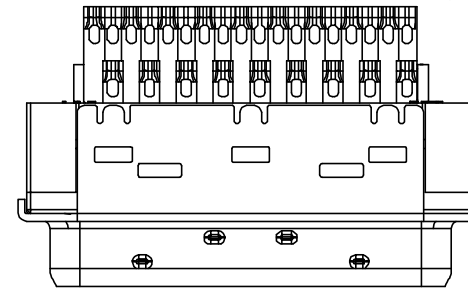
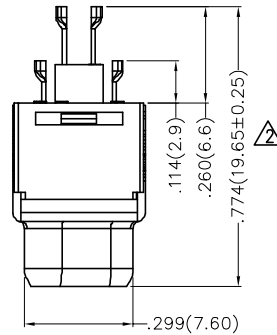
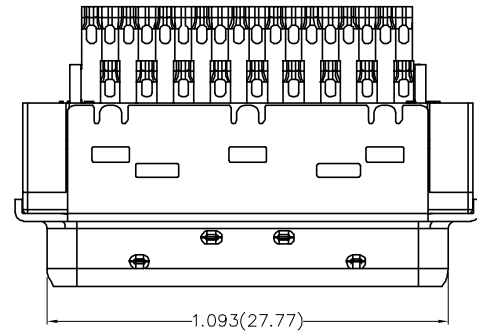
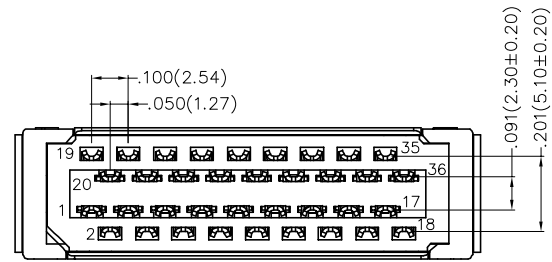
SPECIFICATIONS

Electrical

Current Rating: 1A AC(rms)/DC
Voltage Rating: 40V AC(rms) 500V DC
Contact Resistance: 35 mΩ Max
Insulation Resistance: 200 MΩ Min
Withstanding Voltage: 500V AC r.m.s
Temperature Range-Operating: -25°C~+85°C
Wire Accomodation: 30~24 AWG

Material and Plating

Housing: PBT (UL 94V-0), Black
Contact: Phosphor Bronze/ Selective gold in contact area, tin on tail
Cover: Copper Alloy/ Nickel plated
Shell: SPCC/ Nickel plated



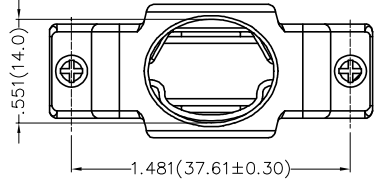
Ordering Information

FCS 36 04 - M0 W S 3 XX K6 K
1 2 3 4 5 6 7 8 9 10

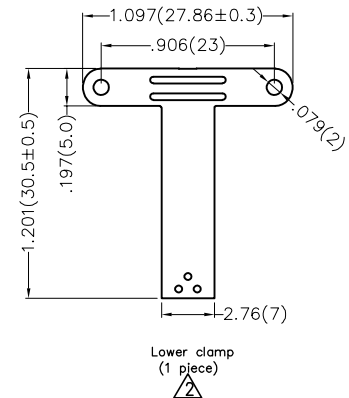
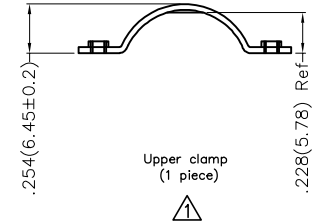
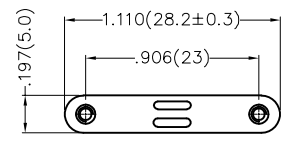
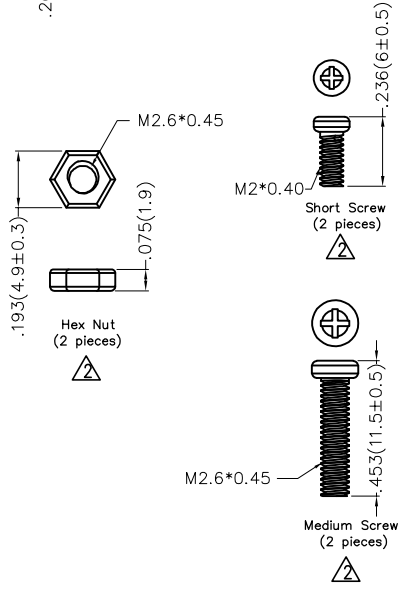
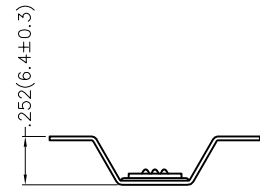
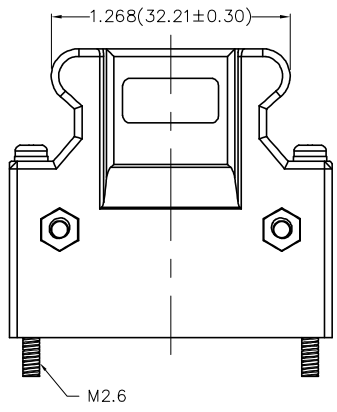
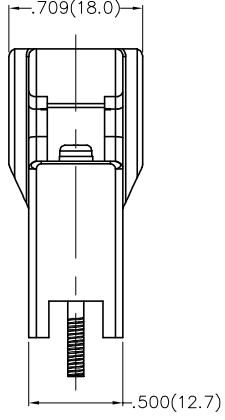
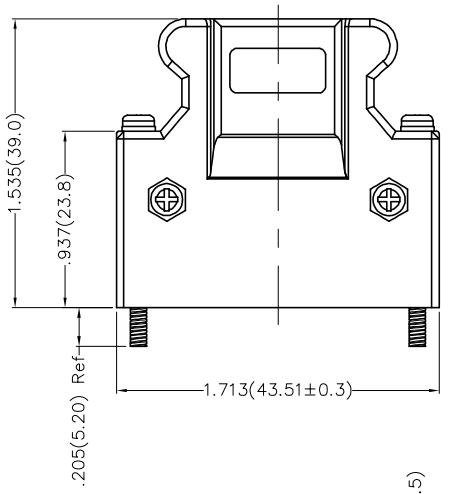
1	Category FCS-SCSI	2	Circuits 36	3	Distinction No. 04	4	Type M0-Male	5	Assembly Layout W-Welding Type	6	Entry Angle S-180° Vertical
7	Plating 3-Selective gold in contact area, bright tin on tail		8	Thickness of Plating 00-Gold flash 03-3μ" Custom plate available		9	Color-Resin K6-Black		10	Packaging K-Tray	

	GENERAL TOLERANCES (UNLESS SPECIFIED)		APPROVE BY FRANK	DATE 19/JUL/13	PART NO. FCS3604-MOWS3XXK6K	ITEM NO. FCS3604		TXGA Building Technology Cornerstone
	DESIGN UNITS Inch (metric)	X.±.012(0.30) X.X±.008(0.20)	X'±5' .X'±2'	CHECKED BY CHERRY	DATE 19/JUL/13	TITLE SCSI Connector Pitch 1.27mm 180° Vertical Male		
SCALE 5:1	SIZE A4	X.XX±.006(0.15) X.XXX±.004(0.10)	.XX'±1' .XX'±0.5'	DRAWN BY KEVIN	DATE 19/JUL/13	THIS DRAWING CONTAINS INFORMATION THAT IS PROPRIETARY TO TXGA INDUSTRIAL ELECTRONICS(S.Z)CO.,LTD AND SHOULD NOT BE USED WITHOUT WRITTEN PERMISSION		

REV	LOCATIONS	DESCRIPTION	DATE	REVISER	APPD



Material—Cover
 Plastic cover: PBT (UL 94V-0), Black
 Clamp: SPCC



THIRD ANGLE PROJECTION DESIGN UNITS Inch (metric) SCALE 5:1	GENERAL TOLERANCES (UNLESS SPECIFIED) X.±.012(0.30) X'.±5' X.X±.008(0.20) X'.±2' X.XX±.006(0.15) .XX'±1' X.XXX±.004(0.10) .XXX'±0.5'		APPROVE BY FRANK CHECKED BY CHERRY DRAWN BY KEVIN	DATE 19/JUL/13 DATE 19/JUL/13 DATE 19/JUL/13	PART NO. FCS3604-MOWS3XXK6K TITLE SCSI Connector Pitch 1.27mm 180° Vertical Male	ITEM NO. FCS3604 THIS DRAWING CONTAINS INFORMATION THAT IS PROPRIETARY TO TXGA INDUSTRIAL ELECTRONICS(S.Z)CO.,LTD AND SHOULD NOT BE USED WITHOUT WRITTEN PERMISSION	Building Technology Cornerstone REV 2 SHEET NO. 2/2
	TXGA						