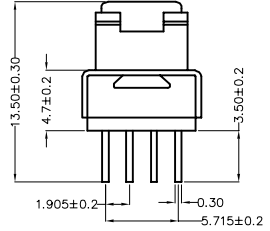
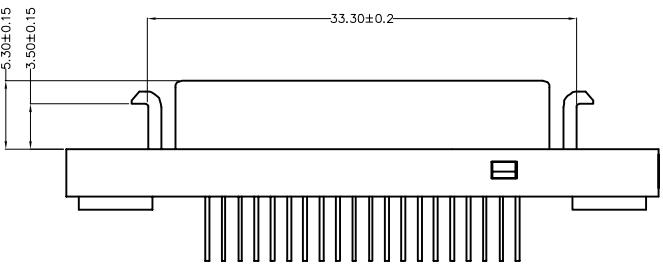
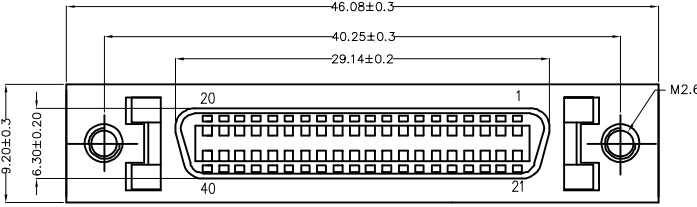


REV	LOCATIONS	DESCRIPTION	DATE	REVISER	APPD

SPECIFICATIONS

Electrical
 Current Rating: 1A AC(rms)/DC
 Voltage Rating: 250V AC(rms)/DC
 Contact Resistance: 35 mΩ Max
 Insulation Resistance: 500 MΩ Min
 Withstanding Voltage: 500V AC r.m.s
 Temperature Range—Operating: -25°C~+85°C

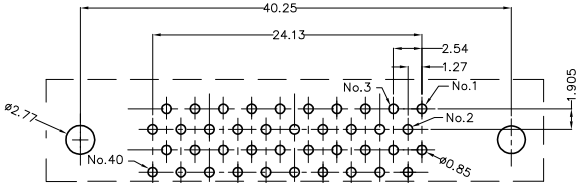
Material and Plating
 Housing: PBT (UL 94V-0)
 Contact: Phosphor Bronze
 Contact plating: Selective gold on contact area, tin on tail
 Shell: SPCC/Nickel Plated
 Bracket: Steel/Nickel Plated



Ordering Information

FCS 40 10 — F0 D S 3 XX BK K A
 1 2 3 4 5 6 7 8 9 10 11

1	Category FCS-SCSI	2	Circuits 40	3	Distinction No. 10	4	Type F0-Female	5	Assembly Layout D-DIP	6	Entry Angle S-180° Vertical
7	Plating 3-Selective gold on contact area, tin on tail	8	Thickness of Plating 05-5μ" Custom plate available	9	Color-Resin BK-Black	10	Packaging K-Tray	11	Distinction Type A-Type A		



Recommended P.C.Board Layout
 General Tolerances: ±0.05mm

THIRD ANGLE PROJECTION	GENERAL TOLERANCES (UNLESS SPECIFIED)		APPROVE BY FRANK	DATE 19/JUL/21	PART NO. FCS4010-FODS3XXBKKA	ITEM NO. FCS4010	Leader Of Industry	
	DESIGN UNITS Inch (metric)	X.±0.12(0.30) X.X±.008(0.20)	X'±5" .XX'±2"	CHECKED BY CHERRY	DATE 19/JUL/21	TITLE SCSI Connector Pitch 1.27mm 180° Vertical Female		REV 0
SCALE 5:1	SIZE A4	X.XX±.006(0.15) X.XXX±.004(0.10)	.XX'±1" .XX'±0.5"	DRAWN BY KEVIN	DATE 19/JUL/21	THIS DRAWING CONTAINS INFORMATION THAT IS PROPRIETARY TO TXGA INDUSTRIAL ELECTRONICS(S.Z)CO.,LTD AND SHOULD NOT BE USED WITHOUT WRITTEN PERMISSION		