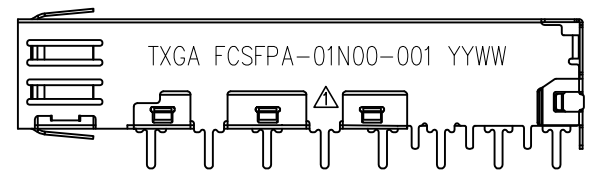
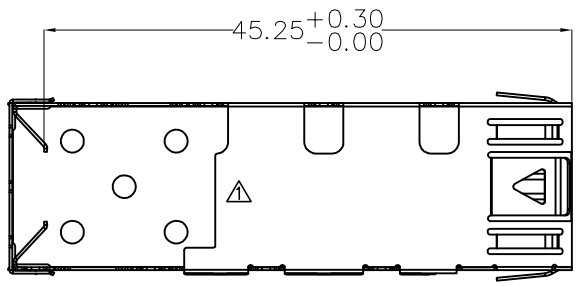
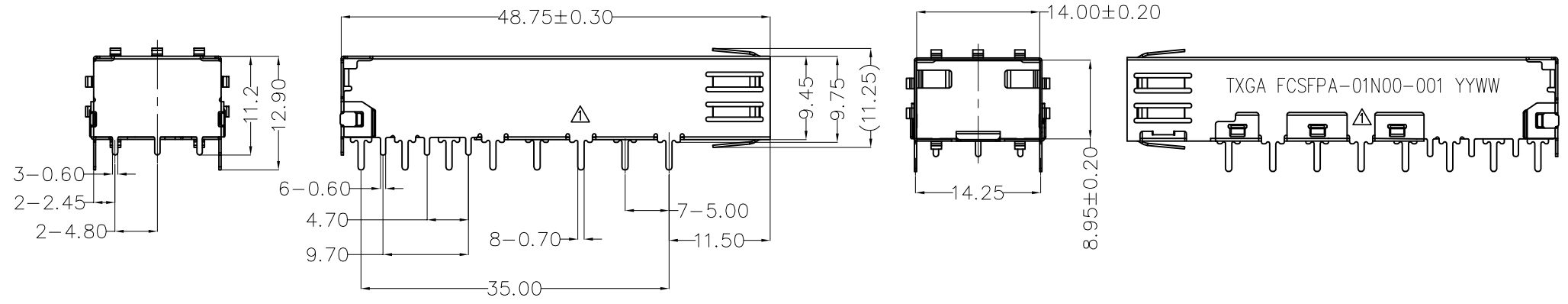
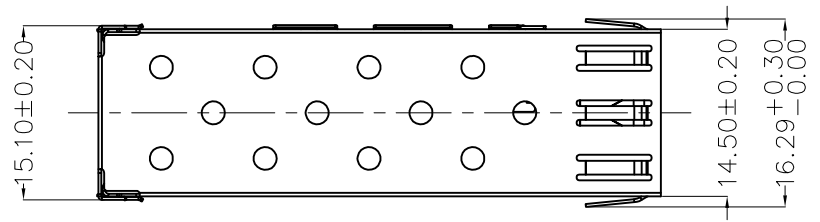


REV	LOCATIONS	DESCRIPTION	DATE	REVISER	APPD
1	△	Update Structure and PCB Layout	01/APR/25	MATT	LEO

SPECIFICATIONS

Operating Temperature: -55°C~+85°C  
 Material: Copper Alloy(C7701)/Nickel Plated, Thickness 0.25mm



<p>THIRD ANGLE PROJECTION</p>	GENERAL TOLERANCES (UNLESS SPECIFIED)		APPROVE BY	DATE	PART NO.	ITEM NO.	<p>Building Technology Cornerstone</p>	
	X. ±0.30	X.* ±5°	LEO	30/JAN/23	FCSFPA-01N00-001	FCSFPA-01		
	DESIGN UNITS	X.X ±0.20	X.X* ±2°	CHECKED BY	DATE	TITLE		REV 1
	METRIC(mm)	X.XX ±0.15	X.XX* ±1°	GISSELLE	30/JAN/23	Fiber optic transceiver module,Cage		SHEET NO. 1/3
SCALE	SIZE	X.XXX ±0.10	X.XXX* ±0.5°	DRAWN BY	DATE	THIS DRAWING CONTAINS INFORMATION THAT IS PROPRIETARY TO TXGA INDUSTRIAL ELECTRONICS(S.Z)CO.,LTD AND SHOULD NOT BE USED WITHOUT WRITTEN PERMISSION		
5:1	A4			YYQ	30/JAN/23			



1 2 3 4 5 6 7 8

REV	LOCATIONS	DESCRIPTION	DATE	REVISER	APPD
1	△	Update Structure and PCB Layout	01/APR/25	MATT	LEO

A

B

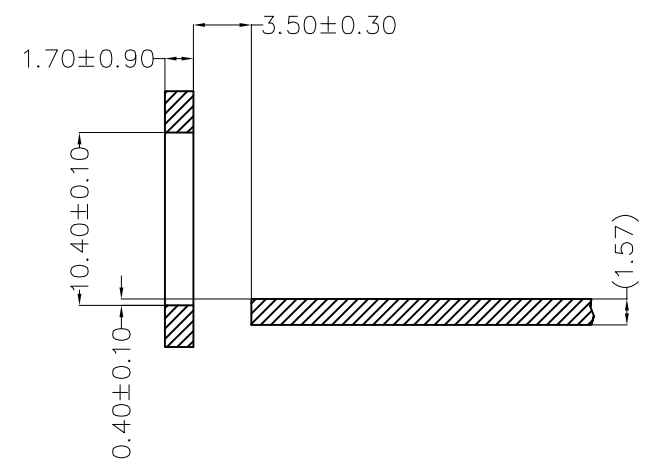
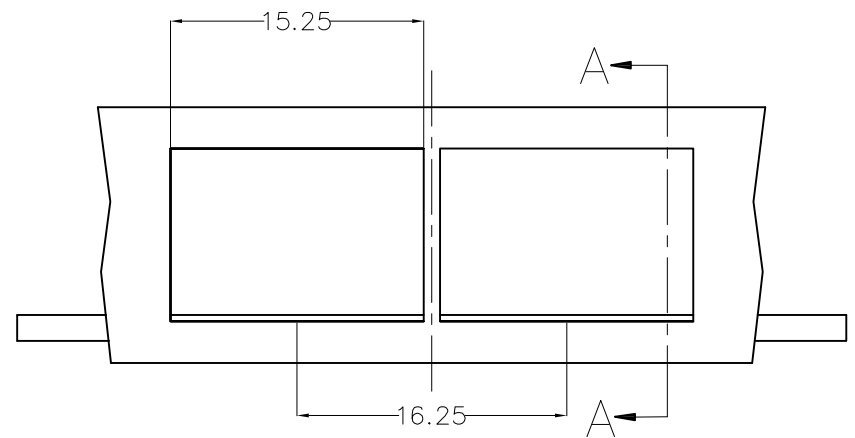
C

D

E

F

Bezel opening below PCB



Section A-A

Recommended Bezel Design

<p>THIRD ANGLE PROJECTION</p>	GENERAL TOLERANCES (UNLESS SPECIFIED)		APPROVE BY	DATE	PART NO.	ITEM NO.	<p>Building Technology Cornerstone</p>	
	X. ±0.30	X.* ±5°	LEO	30/JAN/23	FCSFPA-01N00-001	FCSFPA-01		
	DESIGN UNITS METRIC(mm)	X.X ±0.20	X.X* ±2°	CHECKED BY	DATE	TITLE		REV 1
	SCALE 5:1	X.XX ±0.15	X.XX* ±1°	GISSELLE	30/JAN/23	Fiber optic transceiver module,Cage		SHEET NO. 3/3
SIZE A4	X.XXX ±0.10	X.XXX* ±0.5°	DRAWN BY	DATE	THIS DRAWING CONTAINS INFORMATION THAT IS PROPRIETARY TO TXGA INDUSTRIAL ELECTRONICS(S.Z)CO.,LTD AND SHOULD NOT BE USED WITHOUT WRITTEN PERMISSION			
			YYQ	30/JAN/23				

1 2 3 4 5 6 7 8