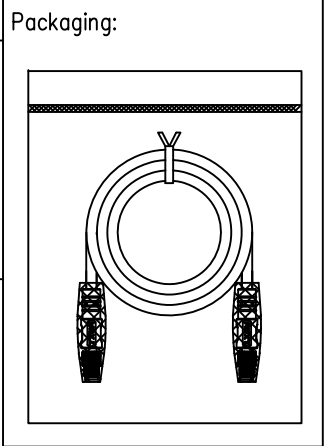
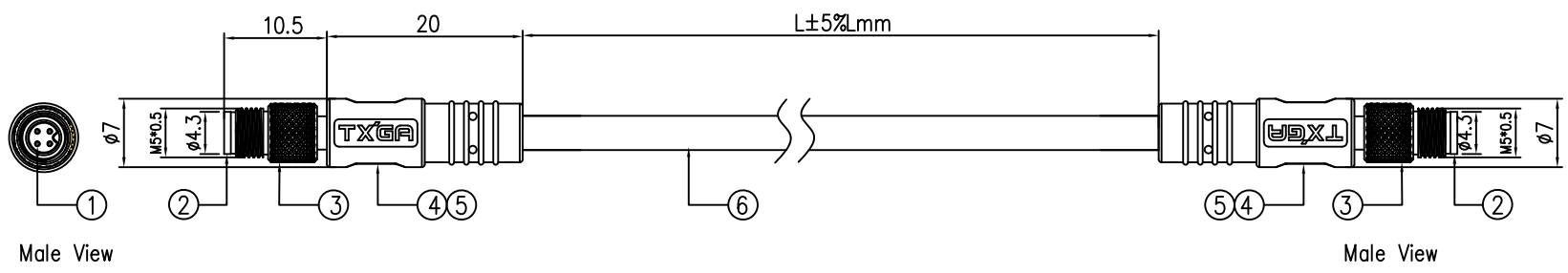


Coding	3WAY	4WAY
A-Coded		
WIRING CHART	1 BROWN	1 BROWN
	2 WHITE	2 WHITE
	3 BLUE	3 BLUE
	4 BLACK	4 BLACK
Rated voltage	60V AC/DC	
Rated current	1A	
Temperature range	-40-105°C	
IP	IP68	



REV	LOCATIONS	DESCRIPTION	DATE	REVISER	APPD
-----	-----------	-------------	------	---------	------



### Order Information

FCU0M5 — A XX XXX 0 0 — 00  
 1 2 3 4 5 6 7

1 Category — 2 Coded — 3 Circuits — 4 Length — 5 Shield — 6 Rotation Angle — 7 Serial code  
 FCU0M5-Double Straight head cable, Male, M5 | A-A Coded | 03-3Circuits 04-4Circuits | 005-0.5M 010-1.0M 015-1.5M 020-2.0M | 0-Without shield | 0-0° | 00-Standard Parts

TABLE 1

CABLE LENGTH (xxx)	005	010	015	020	025	030	035	040	045	.....	100
L(M)	0.5M	1M	1.5M	2.0M	2.5M	3.0M	3.5M	4.0M	4.5M	.....	10M

### ELECTRICAL

- Withstanding Voltage: DC 300V
- Conduction impedance: 3Ω (MAX)
- Insulation Resistance: 10MΩ (MIN)

6	UL2517 4C*26AWG,OD 4.0MM,PVC,Black
5	Outer Mold:PVC,30P,Black
4	Inner Mold:PVC 30P,Black
3	Shell:Brass Plated Ni
2	Housing:PA66,Black
1	Male Pin:Brass Plated Gold
NO.	SPECIFICATION

 THIRD ANGLE PROJECTION DESIGN UNITS Metric SCALE 5:1 SIZE A4	GENERAL TOLERANCES (UNLESS SPECIFIED)		APPROVE BY FRANK	DATE 14/JAN/22	PART NO. FCU0M5-AXXXXX00-00	ITEM NO. M5	 Building Technology Cornerstone
	X. ±0.30	X.' ±5'	CHECKED BY CHERRY	DATE 14/JAN/22	M5X0.5 CABLE STRAIGHT MALE SIDE UNSHIELDED		
	X.XX ±0.15	X.XX' ±1'	DRAWN BY DENG	DATE 14/JAN/22	THIS DRAWING CONTAINS INFORMATION THAT IS PROPRIETARY TO TXGA INDUSTRIAL ELECTRONICS(S.Z)CO.,LTD AND SHOULD NOT BE USED WITHOUT WRITTEN PERMISSION		
	X.XXX ±0.10	X.XXX' ±0.5'					

A  
B  
C  
D  
E  
F

A  
B  
C  
D  
E  
F