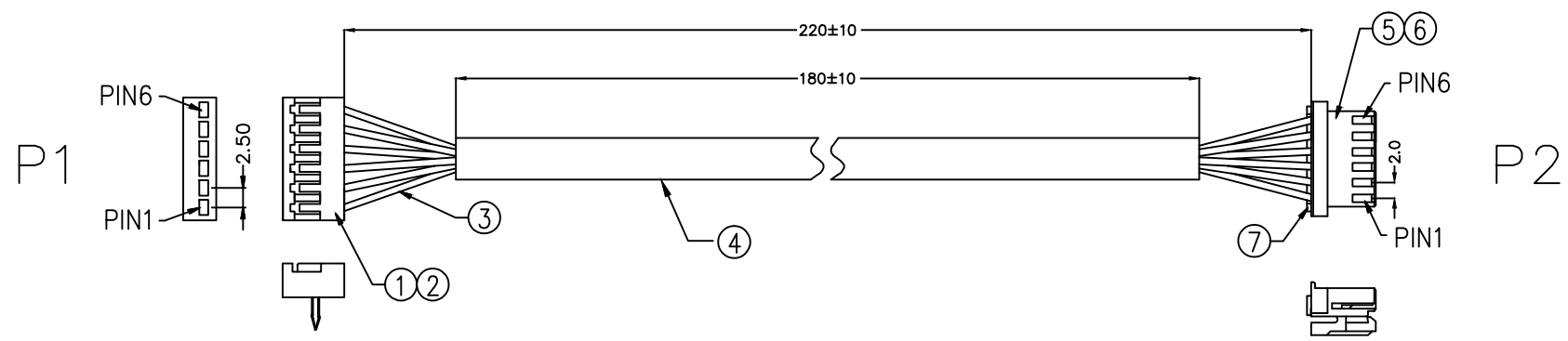


REV	LOCATIONS	DESCRIPTION	DATE	REVISOR	APPD



PIN ASSIGNMENT

P1		P2	
PIN1	Yellow	PIN5	Black
PIN2	Blue	PIN2	Red
PIN3	White	PIN4	Orange
PIN4	Orange	PIN3	White
PIN5	Red	PIN1	Blue
PIN6	Black	PIN6	Yellow

Electrical
 1. Withstanding Voltage: DC 300V
 2. Conduction impedance: 3Ω (MAX)
 3. Insulation Resistance: 10MΩ (MIN)
 Packing specification
 With covering EPE foams on the p1 end
 50pcs/Bundle, 300pcs/Bag

* Note: All Materials Meet The "RoHs" !

NO.	Specification
7	Module connector:2.0mm 6Pin (Red): HX20022-6S
6	Wire to board terminal 2mm Female(Tin-Plated): T20012-F2H
5	Wire to board housing 2mm 6Circuits(White): HX20022-6P
4	Silicone fiberglass sleeve Ø5mm T Greater than 0.37mm White(Greater than 1.2KV)
3	UL1061 26AWG(7/0.16TS) OD=1.00mm (Red/Yellow/White/Orange/Blue/Black)
2	Wire to board terminal 2.5mm Male(Tin-Plated) T25007-M2H
1	Wire to board housing 2.5mm 90°Angle 6Circuits(JC)(White): HG25008-S06M2W1B

 THIRD ANGLE PROJECTION	GENERAL TOLERANCES (UNLESS SPECIFIED)		APPROVE BY	DATE	PART NO.	ITEM NO.	 Leader Of Industry	
	X. ±0.30	X.* ±5'	FRANK	27/JUN/19	FCW001-000816	FCW001		
DESIGN UNITS Metric	X.X ±0.20	X.X' ±2'	CHECKED BY	DATE	TITLE		REV 0	SHEET NO. 1/1
SCALE 5:1	X.XX ±0.15	X.XX' ±1'	CHERRY	27/JUN/19	Single Conductor Cable		THIS DRAWING CONTAINS INFORMATION THAT IS PROPRIETARY TO TXGA INDUSTRIAL ELECTRONICS(S.Z)CO.,LTD AND SHOULD NOT BE USED WITHOUT WRITTEN PERMISSION	
SIZE A4	X.XXX ±0.10	X.XXX' ±0.5'	DRAWN BY	ANDY				
			Aubrey	27/JUN/19				