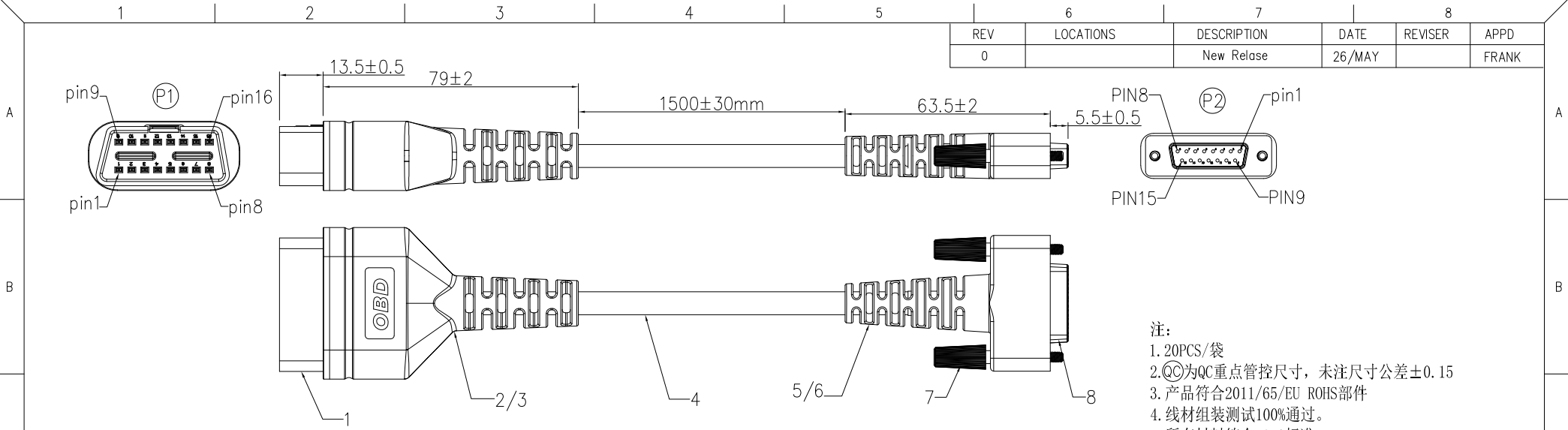
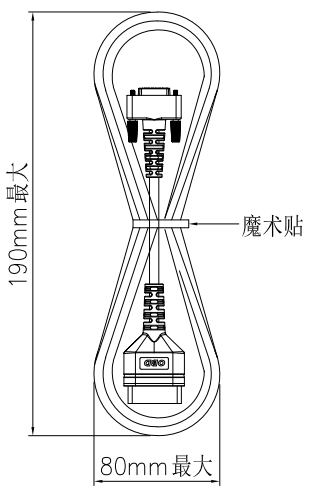


REV	LOCATIONS	DESCRIPTION	DATE	REVISER	APPD
0		New Release	26/MAY		FRANK



注：  
 1. 20PCS/袋  
 2. Ⓞ为QC重点管控尺寸，未注尺寸公差±0.15  
 3. 产品符合2011/65/EU ROHS部件  
 4. 线材组装测试100%通过。  
 5. 所有材料符合ROHS标准。



WIRING CHART			
P1	P2	COLOR	AWG
1	10	红色	28AWG
2	2	绿色	28AWG
3	11	浅绿	28AWG
4+5	15	黑色	24AWG
6	4	白色	28AWG
7	7	黑色	28AWG
8	8	粉色	28AWG
9	9	浅蓝	28AWG
10	3	紫色	28AWG
11	12	浅蓝	28AWG
12	5	灰色	28AWG
13	13	橙色	28AWG
14	6	黄色	28AWG
15	14	蓝色	28AWG
16	1	红色	24AWG



\* Note: All Materials Meet The "RoHs" !

NO.	SPECIFICATION	DESCRIPTION	NOTE
8	DB15 female connector	DB1511-F0WS300K6KA-02	1PC
7	Screw	R-6AA-23	2PCS
6	overmold	PVC 60P	black
5	innermold	PVC 30P	black
4	cable	NTCE-00-15ABK07101-01	∅7.1
3	overmold	PVC 60P	black
2	innermold	PVC 30P	black
1	OBD male connector	OBD10-P16BK2K-000	1PC

ELECTRICAL	
1. Withstanding Voltage:DC 300V	
2. Conduction Impedance: 3Ω (Max)	
3. Insulation Resistance: 10MΩ(Min)	
PACKING SPECIFICATION	
1.1pcs/Bundle,20Pcs/Bag	
2. "*" as the key size control	
NOTES	
1.This product must meet UL486A-1991mechanical performance	
2.This product must meet 2011/65/EU ROHS compliance	

 THIRD ANGLE PROJECTION	GENERAL TOLERANCES (UNLESS SPECIFIED)		DATE	APPROVE BY	PART NO.	ITEM NO.	 Building Technology Cornerstone
	X.±0.12(0.30)	.X'±5'	FRANK	26/MAY/24	FCW002-00000331-00	FCW002	
	DESIGN UNITS Metric		CHECKED BY	DATE	TITLE		
	X.X±.008(0.20)	.X'±2'	CHERRY	26/MAY/24	OBD male to DB15 female L=1500mm		
SCALE NT	SIZE A4	X.XX±.006(0.15)	.XX'±1'	DRAWN BY DANIEL	DATE 26/MAY/24	THIS DRAWING CONTAINS INFORMATION THAT IS PROPRIETARY TO TXGA INDUSTRIAL ELECTRONICS(S,Z)CO.,LTD AND SHOULD NOT BE USED WITHOUT WRITTEN PERMISSION	
		X.XXX±.004(0.10)	.XXX'±0.5'			REV 0	SHEET NO. 1/1