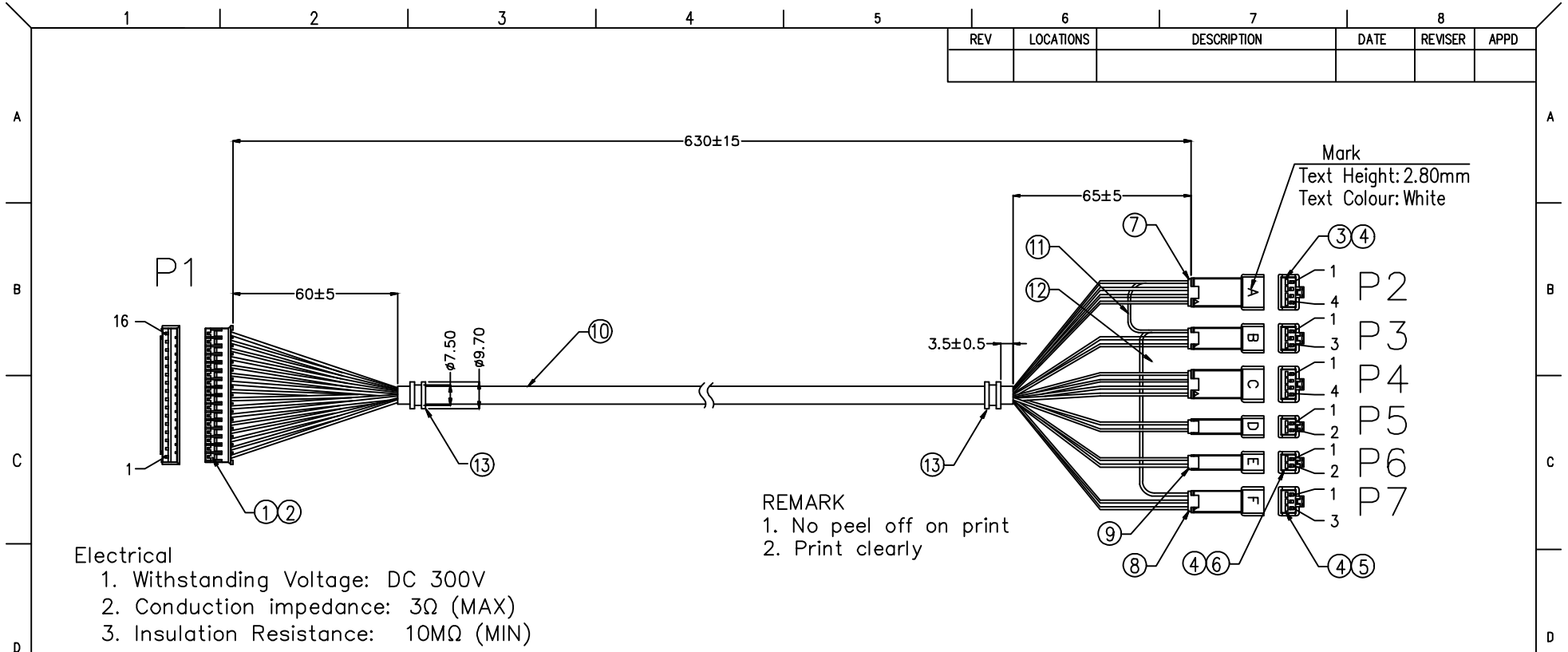


REV	LOCATIONS	DESCRIPTION	DATE	REVISER	APPD



Mark
Text Height: 2.80mm
Text Colour: White

REMARK
1. No peel off on print
2. Print clearly

Electrical
1. Withstanding Voltage: DC 300V
2. Conduction impedance: 3Ω (MAX)
3. Insulation Resistance: 10MΩ (MIN)

Packing specification
1. 20pcs/Bundle, 40pcs/Bag, 240pcs/Box

* Note: All Materials Meet The "RoHs" !

13	PVC 45P COOL Gray 8U
12	UL1061 26AWG L=110mm Red
11	UL1061 26AWG L=110mm Yellow
10	UL2464 #26 16C(Brown, Red, Orange, Yellow, Green, Blue, Purple, Gray, White, Black, Light Green, Pink, Brown/White, Orange/White, Red/White, Black/White) (7/0.16mm) Jacket Gray (Cool Gray 8U) OD=φ6.60mm L=630mm
9	Pitch 2.50mm Plug: HG25011-02W1B
NO.	Specification



8	Pitch 2.50mm Plug: HG25011-03W1B
7	Pitch 2.50mm Plug: HG25011-04W1B
6	Pitch 2.50mm Housing: HG25011-2P
5	Pitch 2.50mm Housing: HG25011-3P
4	Terminal Pitch 2.50mm: T25010-M2H
3	Pitch 2.50mm Housing: HG25011-4P
2	Terminal Pitch 2.00mm: T20001-F2H
1	Pitch 2.00mm Housing: HG20001-16P
NO.	Specification

 THIRD ANGLE PROJECTION	GENERAL TOLERANCES (UNLESS SPECIFIED)		APPROVE BY	DATE	PART NO.	ITEM NO.	 Leader Of Industry
	X±.012(0.30)	X'±5'	FRANK	08/DEC/14	FCW002-000165	FCW002	
DESIGN UNITS	X.X±.008(0.20)	.X'±2'	CHECKED BY	DATE	TITLE		REV 2 SHEET NO. 1/2 THIS DRAWING CONTAINS INFORMATION THAT IS PROPRIETARY TO TXGA INDUSTRIAL ELECTRONICS(S.Z)CO.,LTD AND SHOULD NOT BE USED WITHOUT WRITTEN PERMISSION
Inch (metric)	X.XX±.006(0.15)	.XX'±1'	CHERRY	08/DEC/14	CABLE CONDUCTOR L=630mm		
SCALE	X.XXX±.004(0.10)	.XXX'±0.5'	DRAWN BY	DATE			
5:1			KATE	08/DEC/14			
SIZE	A4						

REV	LOCATIONS	DESCRIPTION	DATE	REVISER	APPD

PIN ASSIGNMENT

P1	P2	P1	P3	P1	P4	P1	P5
PIN16 <u>Black/White</u> PIN1		PIN14 <u>Orange/White</u> PIN2		PIN12 <u>Pink</u> PIN1		PIN9 <u>White</u> PIN1	
PIN15 <u>Red/White</u> PIN2		PIN2 <u>Red</u> PIN3		PIN4 <u>Yellow</u> PIN2		PIN6 <u>Blue</u> PIN2	
PIN11 <u>Light Green</u> PIN3				PIN13 <u>Brown/White</u> PIN3			
PIN1 <u>Brown</u> PIN4				PIN3 <u>Orange</u> PIN4			
P1	P6	P1	P7	P2	P3	P3	P7
PIN8 <u>Gray</u> PIN1		PIN10 <u>Black</u> PIN2		PIN1 <u>Yellow</u> PIN1		PIN1 <u>Red</u> PIN1	
PIN7 <u>Purple</u> PIN2		PIN5 <u>Green</u> PIN3					

 THIRD ANGLE PROJECTION	GENERAL TOLERANCES (UNLESS SPECIFIED)		APPROVE BY FRANK	DATE 08/DEC/14	PART NO. FCW002-000165	ITEM NO. FCW002	 Leader Of Industry	
	X±.012(0.30)	X'±5"	CHECKED BY CHERRY	DATE 08/DEC/14	TITLE Multi-Conductor Cable			REV 1
	DESIGN UNITS Inch (metric)	X.X±.008(0.20)	.X'±2"	DRAWN BY KATE	DATE 08/DEC/14	THIS DRAWING CONTAINS INFORMATION THAT IS PROPRIETARY TO TXGA INDUSTRIAL ELECTRONICS(S.Z)CO.,LTD AND SHOULD NOT BE USED WITHOUT WRITTEN PERMISSION		
	SCALE 5:1	SIZE A4	X.XXX±.004(0.10)	.XXX'±0.5"				