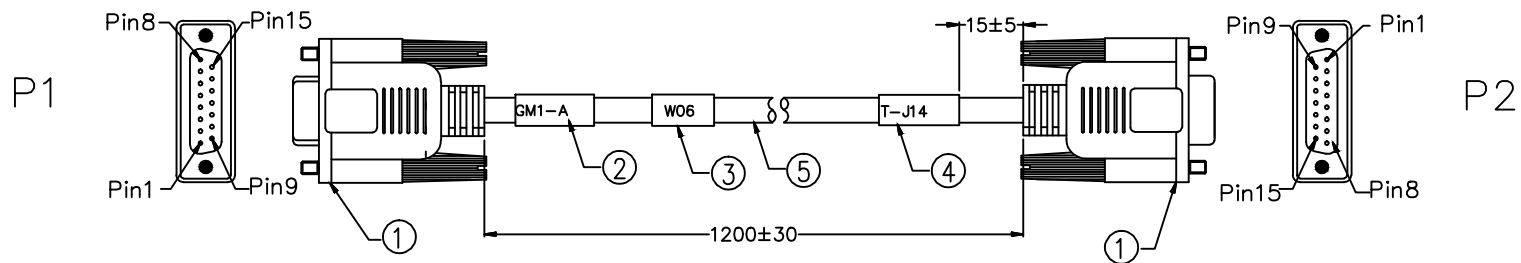


REV	LOCATIONS	DESCRIPTION	DATE	REVISER	APPD

Electrical
 1. Withstanding Voltage: DC 300V
 2. Conduction impedance: 1Ω (MAX)
 3. Insulation Resistance: 10MΩ (MIN)

Packing specification
 1. 1pcs/Bundle, 1pcs/Bag



PIN ASSIGNMENT

P1		P2
PIN1	Red	PIN1
PIN2	White	PIN2
PIN3	Gray	PIN3
PIN4	Yellow	PIN4
PIN5	Orange	PIN5
PIN6	Purple	PIN6
PIN7	Blue	PIN7
PIN8	Green	PIN8
PIN9	Orange-White	PIN9
PIN10	Yellow-Green	PIN10
PIN11	Red-White	PIN11
PIN12	Yellow-Blue	PIN12
PIN13	Red-Green	PIN13
PIN14	Red-Purple	PIN14
PIN15	Blue-Red	PIN15
Shield	Braid	Shield

* Note: All Materials Meet The "RoHs" !

6	UL2464 28AWG(7/0.12TS) 15C +Al +Braid(60%) Jacket Gray (Cool Gray 8U)
4	PVC White Casing label ,printing: T-J14
3	PVC White Casing label ,printing: W06
2	PVC White Casing label ,printing: GM1-A
1	D-SUB Female 15Circuits (Black) : DB1511-FOWS300K6KA
NO.	Specification

 THIRD ANGLE PROJECTION	GENERAL TOLERANCES (UNLESS SPECIFIED)		APPROVE BY	DATE	PART NO.	ITEM NO.	 Leader Of Industry
	X. ±0.30	X.' ±5'	VERNON	24/AUG/17	FCW007-000053	FCW007	
DESIGN UNITS Metric	X.X ±0.20	X.X' ±2'	CHECKED BY	DATE	TITLE		REV 0 SHEET NO. 1/1
	X.XX ±0.15	X.XX' ±1'	KATE	24/AUG/17	D-SUB Cable Assemblies		
SCALE 5:1	SIZE A4	X.XXX ±0.10	X.XXX' ±0.5'	DRAWN BY	DATE	THIS DRAWING CONTAINS INFORMATION THAT IS PROPRIETARY TO TXGA INDUSTRIAL ELECTRONICS(S.Z)CO.,LTD AND SHOULD NOT BE USED WITHOUT WRITTEN PERMISSION	
				LXF	24/AUG/17		