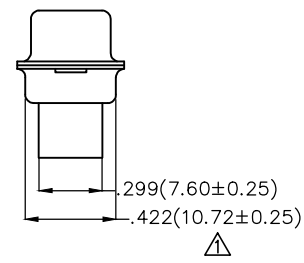
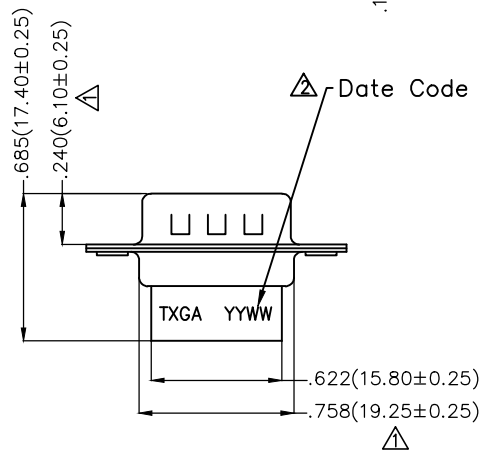
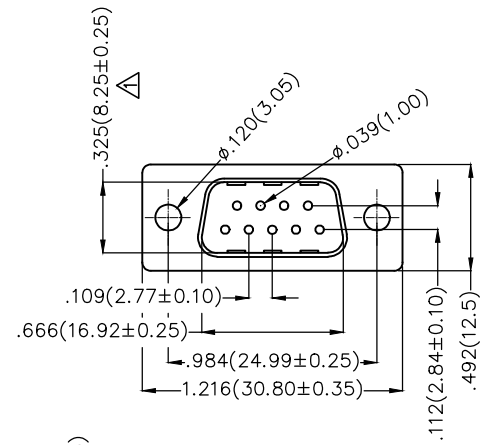


REV	LOCATIONS	DESCRIPTION	DATE	REVISER	APPD
1	△	Size changes	25/MAY/21	KATE	CHERRY
2	△	Add marking code	13/Jan/25	NICK	LEO



**SPECIFICATIONS**

Electrical  
 Temperature Range—Operating: -55°C~+85°C  
 Material and Plating  
 Housing: PBT (UL 94V-0)  
 Shell: Spcc/ Nickel plated

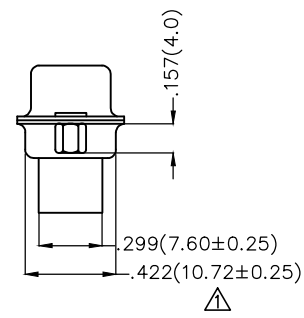
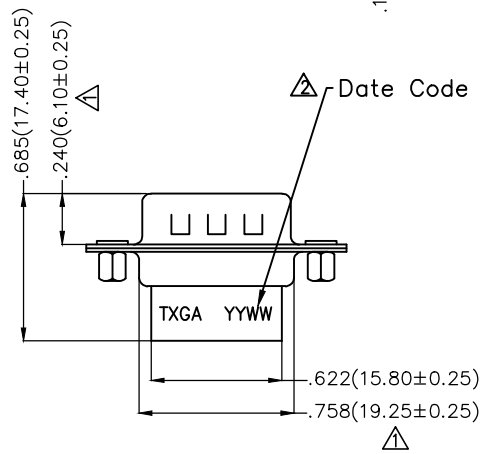
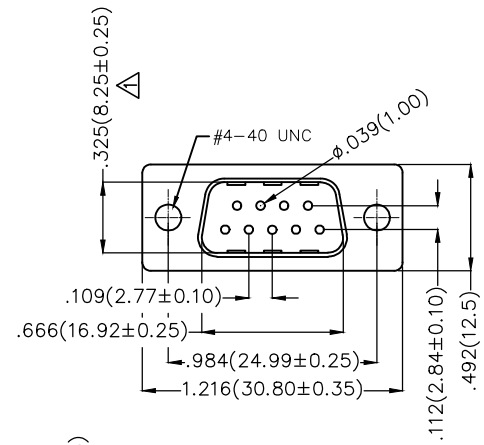
**Ordering Information**

FDB 09 08 — M0 T S 0 00 XX K A  
 1 2 3 4 5 6 7 8 9

1   Category FDB- D-SUB	2   Circuits 09	3   Distinction No. 08	4   Type M0—Male	5   Assembly Layout T—Terminal type
6   Entry Angle S—180° Vertical	7   Color—Resin K6—Black U1—Blue	8   Packaging K—Tray	9   Distinction Type A—A Type	

 THIRD ANGLE PROJECTION	GENERAL TOLERANCES (UNLESS SPECIFIED)		APPROVE BY FRANK	DATE 28/JUN/13	PART NO. FDB0908—M0TS000XXKA	ITEM NO. FDB0908	 Leader Of Industry
	DESIGN UNITS Inch (metric)	X.±.012(0.30)	.X'±5'	CHECKED BY JACOB	DATE 28/JUN/13	TITLE D—SUB Connector 9Circuits Terminal type Male	
SCALE 5:1	SIZE A4	X.XX±.006(0.15)	.XX'±1'	DRAWN BY CHERRY	DATE 28/JUN/13	THIS DRAWING CONTAINS INFORMATION THAT IS PROPRIETARY TO TXGA INDUSTRIAL ELECTRONICS(S.Z)CO.,LTD AND SHOULD NOT BE USED WITHOUT WRITTEN PERMISSION	
		X.XXX±.004(0.10)	.XXX'±0.5'			REV 2	SHEET NO. 1/1

REV	LOCATIONS	DESCRIPTION	DATE	REVISER	APPD
1	△	Size changes	25/MAY/21	KATE	CHERRY
2	△	Add marking code	13/Jan/25	NICK	LEO



**SPECIFICATIONS**

Electrical  
 Temperature Range—Operating: -55°C~+85°C  
 Material and Plating  
 Housing: PBT (UL 94V-0)  
 Shell: Spcc/ Nickel plated

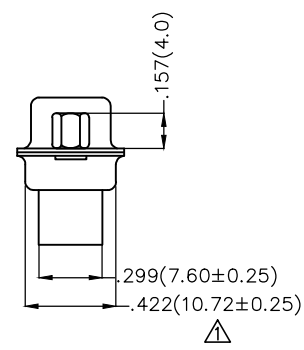
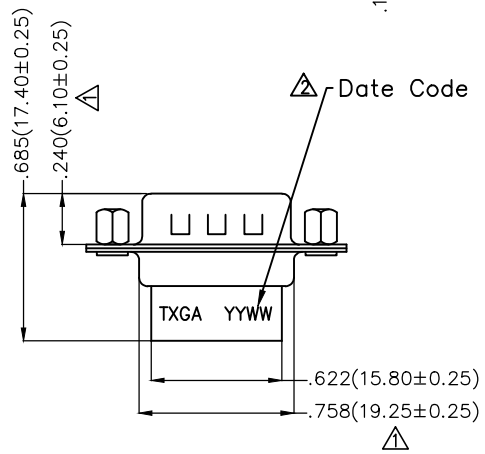
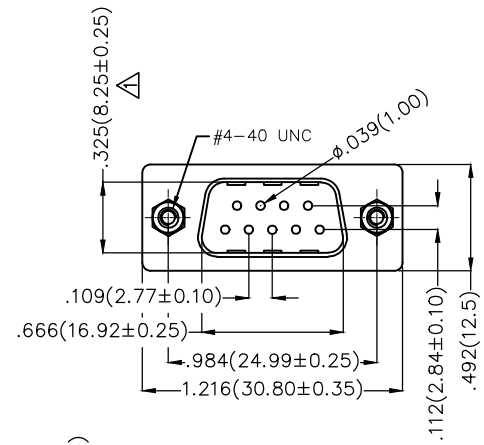
**Ordering Information**

FDB 09 08 — M0 T S 0 00 XX K B  
 1 2 3 4 5 6 7 8 9

1 Category FDB- D-SUB	2 Circuits 09	3 Distinction No. 08	4 Type M0-Male	5 Assembly Layout T-Terminal type
6 Entry Angle S-180° Vertical	7 Color-Resin K6-Black U1-Blue	8 Packaging K-Tray	9 Distinction Type B-B Type	

 THIRD ANGLE PROJECTION	GENERAL TOLERANCES (UNLESS SPECIFIED)		APPROVE BY FRANK	DATE 28/JUN/13	PART NO. FDB0908-M0TS000XXKB	ITEM NO. FDB0908	 Leader Of Industry
	DESIGN UNITS Inch (metric)	X.±.012(0.30)	X.'±5'	CHECKED BY JACOB	DATE 28/JUN/13	TITLE D-SUB Connector 9Circuits Terminal type Male	
SCALE 5:1	SIZE A4	X.XX±.008(0.20)	X.'±2'	DRAWN BY CHERRY	DATE 28/JUN/13	THIS DRAWING CONTAINS INFORMATION THAT IS PROPRIETARY TO TXGA INDUSTRIAL ELECTRONICS(S.Z)CO.,LTD AND SHOULD NOT BE USED WITHOUT WRITTEN PERMISSION	
		X.XX±.006(0.15)	.XX'±1'			REV 2	SHEET NO. 1/1
		X.XXX±.004(0.10)	.XXX'±0.5'				

REV	LOCATIONS	DESCRIPTION	DATE	REVISER	APPD
1	△	Size changes	25/MAY/21	KATE	CHERRY
2	△	Add marking code	13/Jan/25	NICK	LEO



SPECIFICATIONS

Electrical  
 Temperature Range—Operating: -55°C~+85°C  
 Material and Plating  
 Housing: PBT (UL 94V-0)  
 Shell: Spcc/ Nickel plated

Ordering Information

FDB 09 08 — M0 T S 0 00 XX K C  
 1 2 3 4 5 6 7 8 9

1   Category FDB- D-SUB	2   Circuits 09	3   Distinction No. 08	4   Type M0-Male	5   Assembly Layout T-Terminal type
6   Entry Angle S-180° Vertical	7   Color-Resin K6-Black U1-Blue	8   Packaging K-Tray	9   Distinction Type C-C Type	

 THIRD ANGLE PROJECTION	GENERAL TOLERANCES (UNLESS SPECIFIED)		APPROVE BY FRANK	DATE 28/JUN/13	PART NO. FDB0908-M0TS000XXKC	ITEM NO. FDB0908	 Leader Of Industry	
	DESIGN UNITS Inch (metric)	X.±.012(0.30)	X.'±5'	CHECKED BY JACOB	DATE 28/JUN/13	TITLE D-SUB Connector 9Circuits Terminal type Male		REV 2
SCALE 5:1	SIZE A4	X.XX±.008(0.20)	X'±2'	DRAWN BY CHERRY	DATE 28/JUN/13	THIS DRAWING CONTAINS INFORMATION THAT IS PROPRIETARY TO TXGA INDUSTRIAL ELECTRONICS(S.Z)CO.,LTD AND SHOULD NOT BE USED WITHOUT WRITTEN PERMISSION		